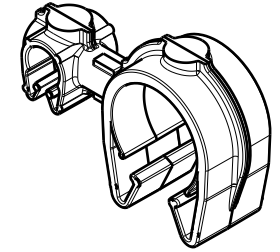
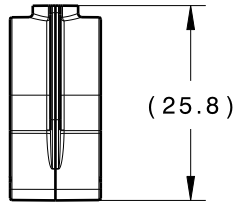
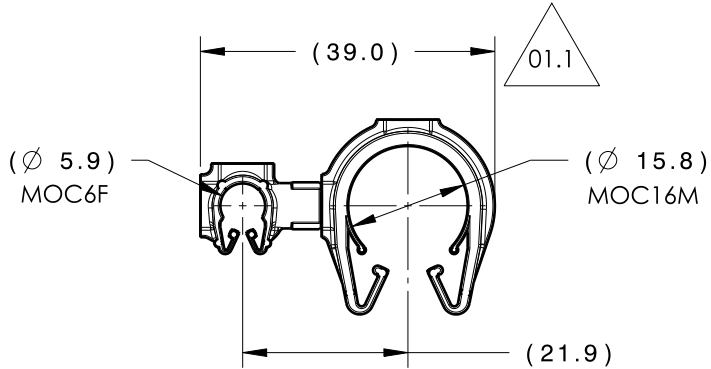
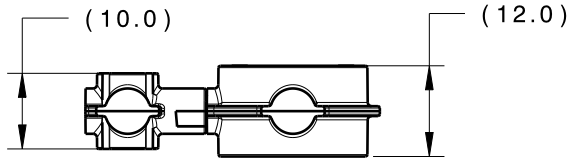
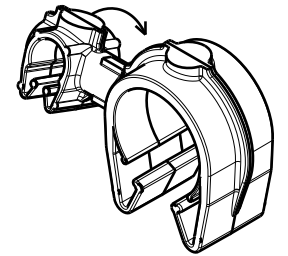


Revision Level			Revision Record	Changed	Date	Approved	Date
Drawing	State	Part					
01.2	DESIGN RELEASE		SEE ECN# 014407	FDS	4/20/18	EJH	4/20/18



ISOMETRIC VIEW

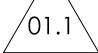
CLIPS ROTATE 360 DEGREES




ISOMETRIC VIEW ROTATED

TYPE	MOC6F	MOC16M
HARNESS	5.5MM-6.5MM	14.0MM-17.0MM
HOSE	5.5MM-6.5MM	14.0MM-17.0MM
HARD PIPE/TUBE	6.0MM-6.8MM	15.9MM-18.3MM

\*RECOMMENDED SIZES MAY DIFFER DEPENDING ON THE APPLICATION , PRODUCT REQUIREMENTS AND MATERIALS USED

\*\*PATENT PENDING 29/582,271 

GLOBAL PART DESCRIPTION 	MOC6F**			MOC16M**		
	DRAWING	MATERIAL	COLOR	DRAWING	MATERIAL	COLOR
MOC6FMOC16M-PA66-BK	16-0314-000-CSU	PA66HIRHS	BLACK	16-0321-000-CSU	PA66HIRHS	BLACK

Material <b>SEE CHART</b> COLOR: SEE CHART	Units <b>millimeters</b>	The copyright of this drawing is reserved by HellermannTyton. It is issued on condition that it is not reproduced, copied or disclosed to a third party, either wholly or in part, without the consent of HellermannTyton.	Drawn	TAT	2/21/17	Article/Type-No MOC6FMOC16M	Scale	1:1		
	Tolerance defined on each dimension		Approved	EJH	2/28/17		Title  6MM MOC COUPLED TO A 16MM MOC	Project Number	16-0326	
			<b>HellermannTyton</b> North America Email: corp@htamericas.com Web: www.hellermann.tyton.com			Drawing-No		PRODUCTION : Phase	Format	AH
									<b>16-0326-157-CSU</b> 	Sheet