

4

3

2

1

THIS DRAWING IS UNPUBLISHED.

RELEASED FOR PUBLICATION

© COPYRIGHT

ALL RIGHTS RESERVED.

LOC DIST


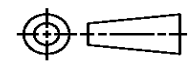
REVISIONS

P	LTR	DESCRIPTION	DATE	DWN	APVD

REPLACED BY OCEAN STYLE APPLICATOR PART NUMBER

FOR REPLACEMENT PARTS FOR APPLICATOR REFER TO ADDITIONAL PAGE(S). SPARE PARTS KIT (IF LISTED) WILL REMAIN AVAILABLE.

THE REPLACEMENT OCEAN STYLE APPLICATOR HAS THE SAME TERMINATOR/PRESS INTERFACE AS APPLICATOR

THIS DRAWING IS A CONTROLLED DOCUMENT.		DWN	 TE Connectivity		
DIMENSIONS:		CHK			
TOLERANCES UNLESS OTHERWISE SPECIFIED:		APVD	NAME		
 <ul style="list-style-type: none"> 0 PLC ± 1 PLC ± 2 PLC ± 3 PLC ± 4 PLC ± ANGLES ± 		PRODUCT SPEC	RESTRICTED TO		
		APPLICATION SPEC	SIZE	CAGE CODE	DRAWING NO
MATERIAL	FINISH	WEIGHT	A3	C-	
		SCALE	SHEET	OF	REV

PART NUMBER	REV	FIRST USED	TERMINATOR	FEED TYPE	DESCRIPTION
1528302-1	C	-	LEADMAKER	MECH POST FEED	CUTS CARRIER
1528302-2	C	-	BENCH	MECH PRE FEED	CUTS CARRIER
1528302-6	C	-	LEADMAKER	MECH POST FEED	CONTINUOUS CARRIER
7-1528302-1	C	-	LEADMAKER	MECH POST FEED	-1 AND SPARE PARTS
7-1528302-2	C	-	BENCH	MECH PRE FEED	-2 AND SPARE PARTS
7-1528302-6	C	-	LEADMAKER	MECH POST FEED	-6 AND SPARE PARTS
7-1528302-7	A	-	-	-	SPARE PARTS KIT

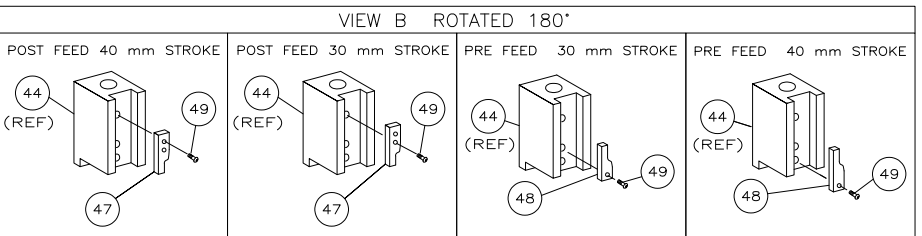
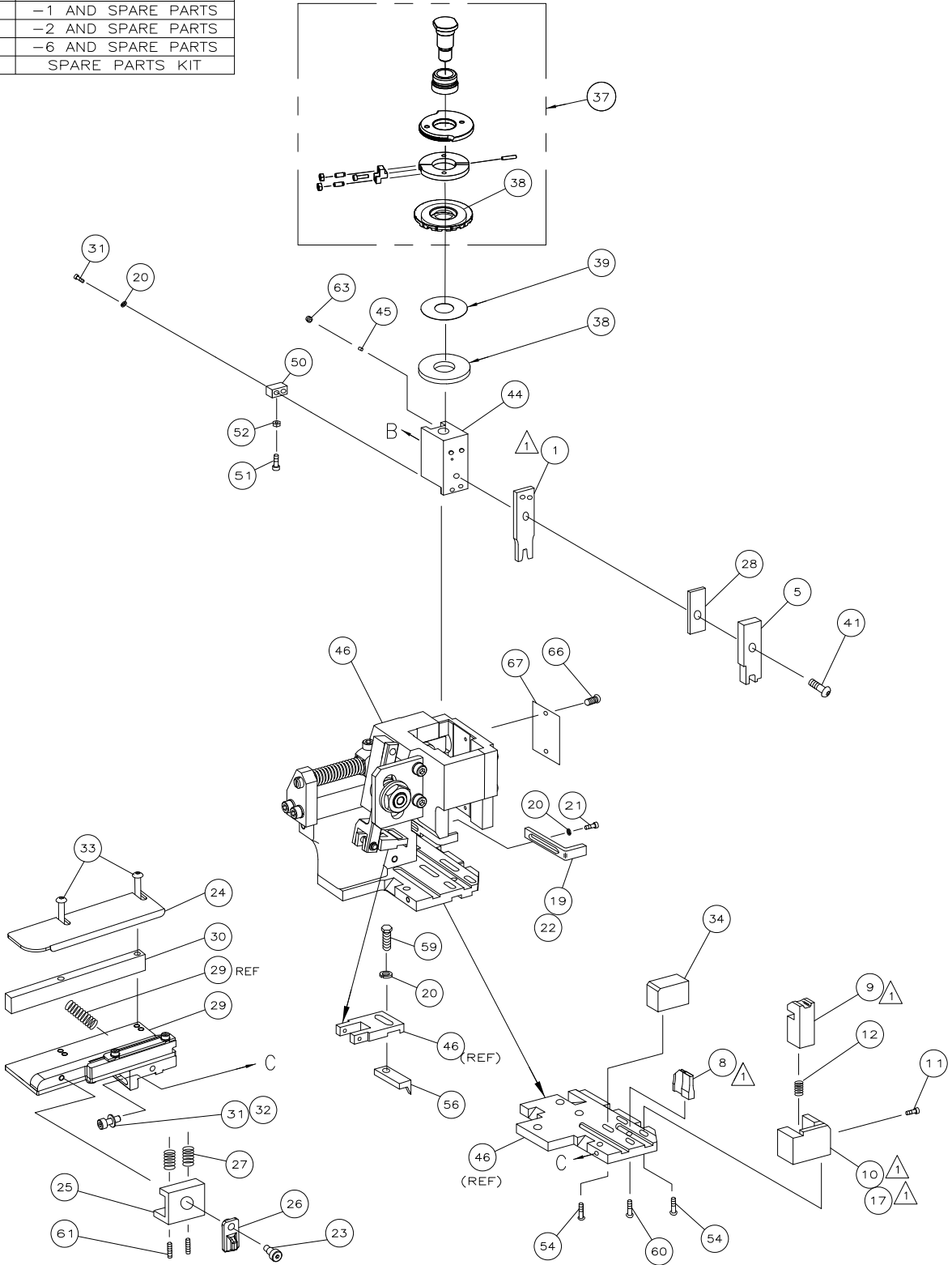
CRIMP	SIZE	TYPE	RANGE
WIRE	1.57 [.062 IN]	F	22-18 AWG
INSUL	-	-	-
WIRE STRIP LENGTH		APPL INSTRUCTION	
2.52-3.02 [.099-.119 IN]		408-8322 & 408-8490	
TERMINAL APPL SPEC	114-10000		FEED 7.62 [.300 IN]

TERMINALS APPLIED					
745229	-	-	-	-	-
745230	-	-	-	-	-
-	-	-	-	-	-
-	-	-	-	-	-
-	-	-	-	-	-
-	-	-	-	-	-
-	-	-	-	-	-
-	-	-	-	-	-
-	-	-	-	-	-

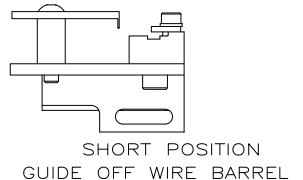
WIRE SIZE mm ² AWG	CRIMP HEIGHT *	REF SETTING
18 AWG	1.12 ±0.05 [.044 ±.002 IN]	B2
20 AWG	0.94 ±0.05 [.037 ±.002 IN]	C4
22 AWG	0.89 ±0.05 [.035 ±.002 IN]	C7

SET UP GAGE 458637-3 LAYOUT L1528302

- RECOMMENDED SPARE PARTS.
- GREASE RAM, CAM, CAM FOLLOWER AND FEED ROD LIGHTLY.
 - LUBRICATE DAILY PER THE APPLICATOR INSTRUCTION SHEET SUPPLIED WITH THE APPLICATOR.



*** WARNING:**
 ON INSTALLATION, SET WIRE DISC TO LARGEST WIRE SIZE SETTING. USE OF SETTINGS BELOW MIN REQUIRED CRIMP HEIGHT SETTING WILL CAUSE DAMAGE TO CRIMP TOOLING.



QTY	REQD	PER ASSY	PART NO	DESCRIPTION	ITEM NO			
-	1	1	1	1	1	1528302	PRINT, APPLICATOR LOG SHEET	73
-	1	1	1	1	1	1338705-3	DOCUMENTATION PACKAGE	71
-	1	1	1	1	1			70
-	1	1	1	1	1			69
-	1	1	1	1	1			68
-	1	1	1	1	1	461264-5	PLATE, IDENTIFICATION	67
-	2	2	2	2	2	21017-2	SCR,DRIVE(#2x.19)ID PLATE	66
-	1	1	1	1	1			65
-	1	1	1	1	1			64
-	1	1	1	1	1	3-18031-0	SCR,SKT SET(M6X6)RAM	63
-	2	2	2	2	2	2-18032-5	SCR,SET(M5X20)DRAG	61
-	1	1	1	1	1	18024-7	SCR,BHC(M4X10)ANVIL	60
-	1	1	1	1	1	5-18022-2	SCR,HEX(M4X8)FEED FINGER	59
-	1	1	1	1	1			58
-	1	1	1	1	1			57
-	1	1	1	1	1	1338685-1	PAWL, FEED	56
-	4	4	4	4	4	18024-8	SCR,BHC(M4X12)SHEAR HOLDER	55
-	1	1	1	1	1	18030-1	NUT,HEX(M3)HOLD DOWN	52
-	1	1	1	1	1	811242-5	BUMPER, HOLDDOWN	51
-	1	1	1	1	1	690753-2	SPACER, TONKER	50
-	1	1	1	1	1	18024-3	SCR,BHC(M3X10)CAM	49
-	1	1	1	1	1	1338675-1	CAM, PRE FEED 30 & 40 mm ST	48
-	1	1	1	1	1	1338676-1	CAM, POST FEED 30 & 40 mm ST	47
-	1	1	1	1	1	1320999-3	APPLICATOR BASIC SUBASSY	46
-	1	1	1	1	1	690191-1	PLUG, NYLON	45
-	1	1	1	1	1	1338660-1	RAM	44
-	1	1	1	1	1			43
-	1	1	1	1	1			42
-	1	1	1	1	1	2-18024-6	SCR,BHC(M8X25)RAM	41
-	1	1	1	1	1	690125-1	SHIM SUBASSY	40
-	1	1	1	1	1	469367-8	SPACER, FINE ADJUST	39
-	1	1	1	1	1	879103-2	FINE ADJUST HEAD SUBASSY	37
-	1	1	1	1	1			36
-	1	1	1	1	1			35
-	1	1	1	1	1	1424186-2	SUPPORT, TERMINAL	34
-	2	2	2	2	2	1-18024-0	SCR,BHC(M4X20)STRIP GUIDE	33
-	1	1	1	1	1	18027-2	WASHER, FLAT(M4)	32
-	3	3	3	3	3	1-18023-2	SCR,SKT CAP(M4X12)MOUNT BLOCK	31
-	1	1	1	1	1	1-1320908-7	SPACER, STRIP GUIDE	30
-	1	1	1	1	1	1633073-1	STRIP GUIDE PLATE ASSY	29
-	1	1	1	1	1	1-455888-0	SPACER, FRONT SHEAR DEP	28
-	2	2	2	2	2	1-22284-0	SPRING, DRAG	27
-	1	1	1	1	1	356835-1	LEVER, DRAG RELEASE	26
-	1	1	1	1	1	240792-1	DRAG, TERMINAL	25
-	1	1	1	1	1	1320928-1	PLATE, STRIP GUIDE	24
-	1	1	1	1	1	980371-4	SCR,SHC SHLD	23
-	1	1	1	1	1	690472-2	STRIPPER	22
-	1	1	1	1	1	1-18023-1	SCR,SHC(M4X10)STRIPPER	21
-	4	4	4	4	4	18025-2	WASHER,LOCK(M4)STRIPPER	20
-	1	1	1	1	1	690472-1	STRIPPER	19
-	1	1	1	1	1			18
-	1	1	1	1	1	1338684-1	HOLDER, SHEAR, FRONT (NO-CUT)	17
-	1	1	1	1	1			16
-	1	1	1	1	1			15
-	1	1	1	1	1			14
-	1	1	1	1	1			13
-	1	1	1	1	1	3-22280-3	SPRING, SHEAR	12
-	1	1	1	1	1	356885-4	STOP, SHEAR	11
-	1	1	1	1	1	1320921-1	HOLDER, SHEAR, FRONT (CUT)	10
-	1	1	1	1	1	462006-1	SHEAR, FLOAT (FRONT)	9
-	1	2	2	2	2	1-1333227-1	ANVIL	8
-	1	1	1	1	1			7
-	1	1	1	1	1			6
-	1	1	1	1	1	2-455889-0	DEPRESSOR, SHEAR (FRONT)	5
-	1	1	1	1	1			4
-	1	1	1	1	1			3
-	1	1	1	1	1			2
-	1	2	2	2	2	2-456403-6	CRIMPER, WIRE	1

THIS DRAWING IS A CONTROLLED DOCUMENT.

DIMENSIONS: INCHES

TOLERANCES UNLESS OTHERWISE SPECIFIED:

0 FLG ± .010

1 FLG ± .015

2 FLG ± .020

3 FLG ± .030

4 FLG ± .040

ANGLES ± .5°

MATERIAL: - FINISH: -

APPLICATOR: F. BACKHURST

PRODUCT SPEC: FINE ADJ SIDE FD HD-1 APPL

APPLICATION SPEC: -

SIZE: A1

SCALE: -

SHEET: 1 of 1

REV: C