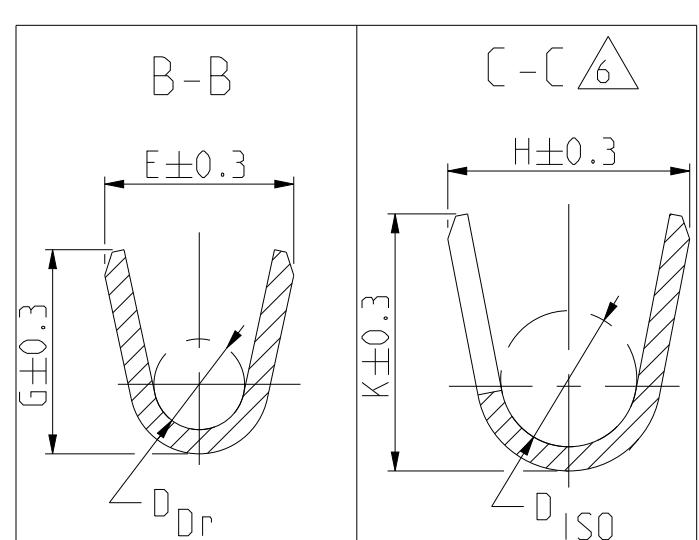
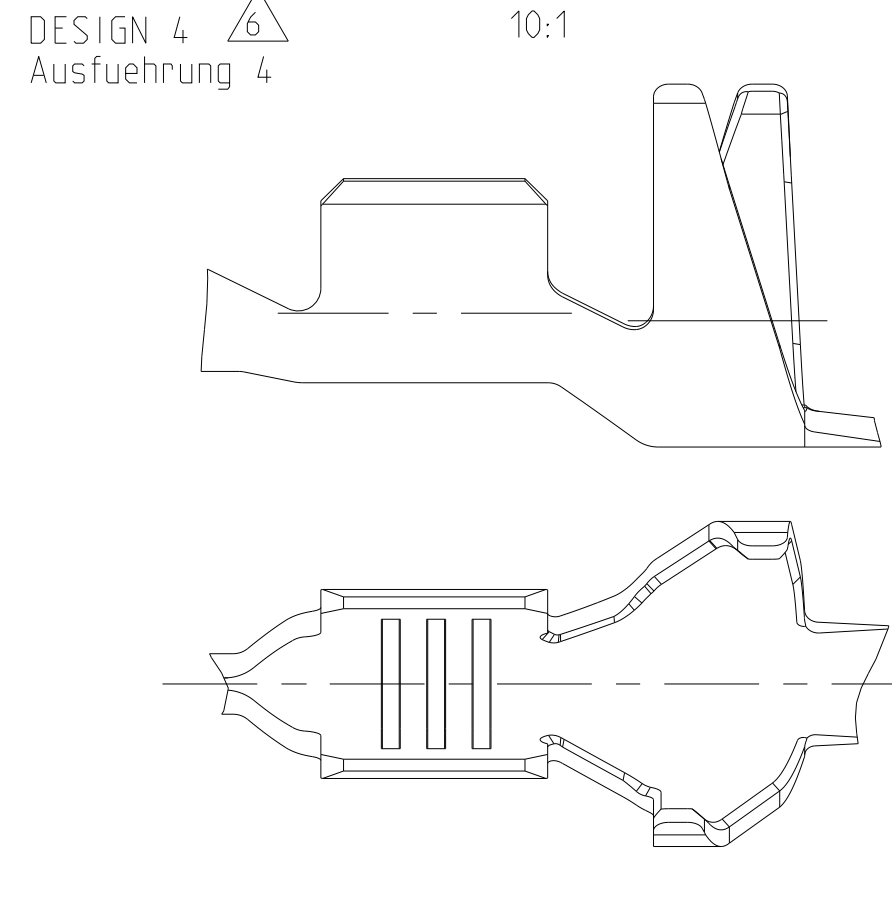
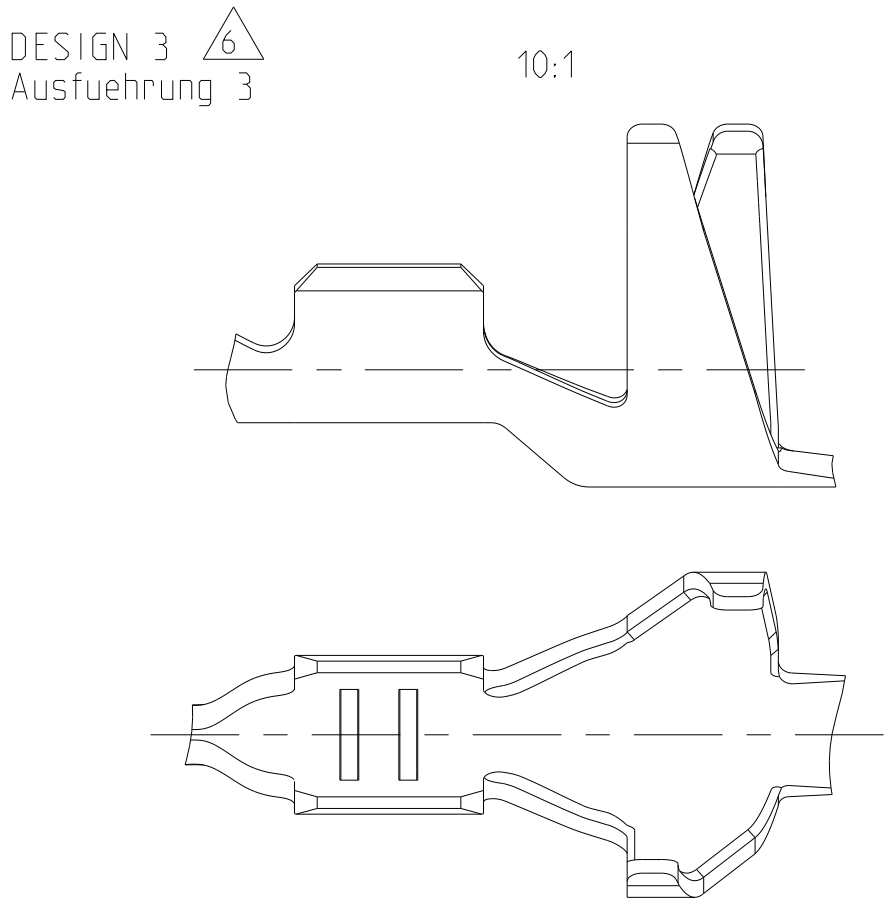
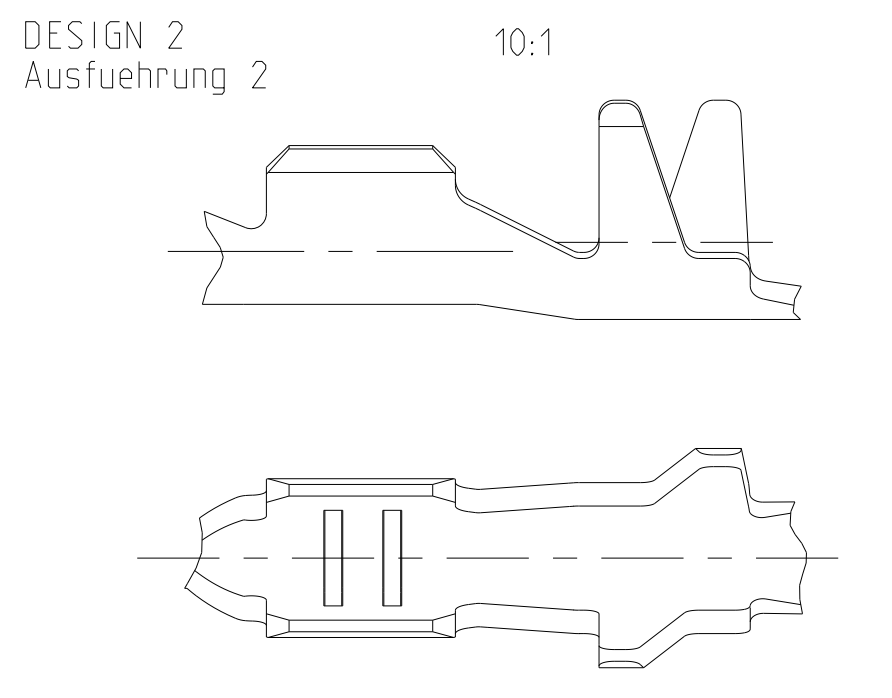
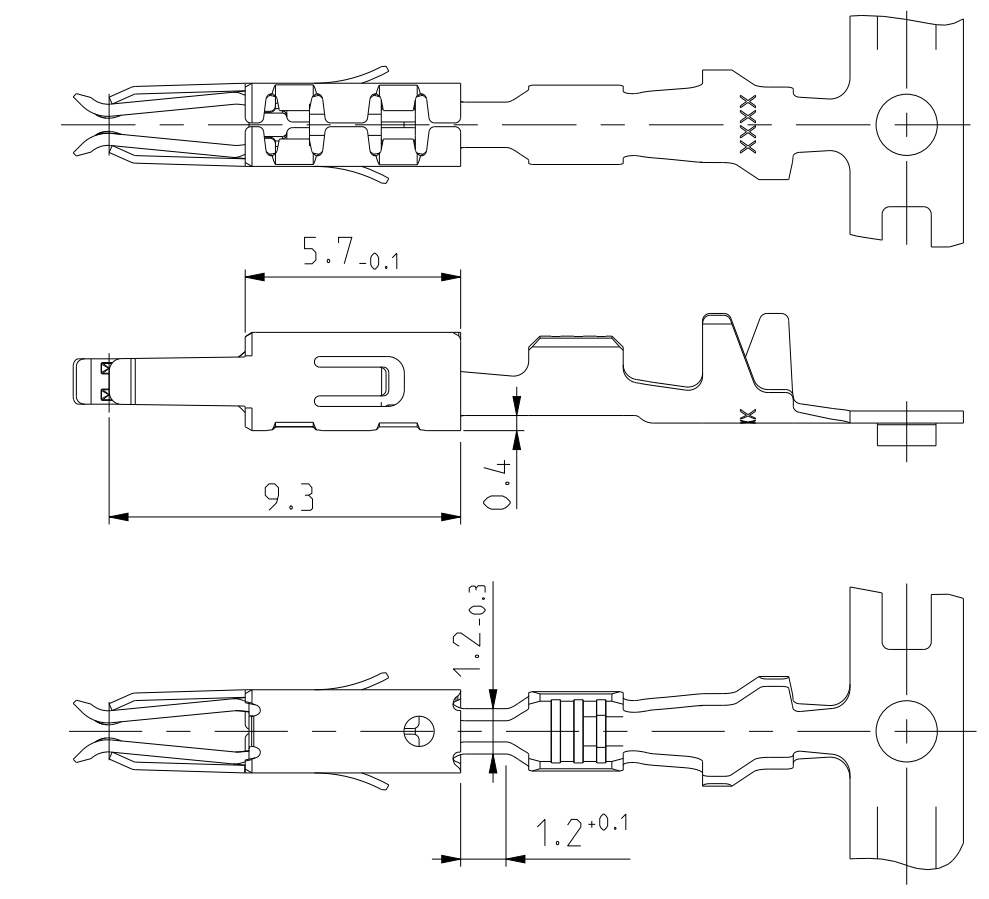
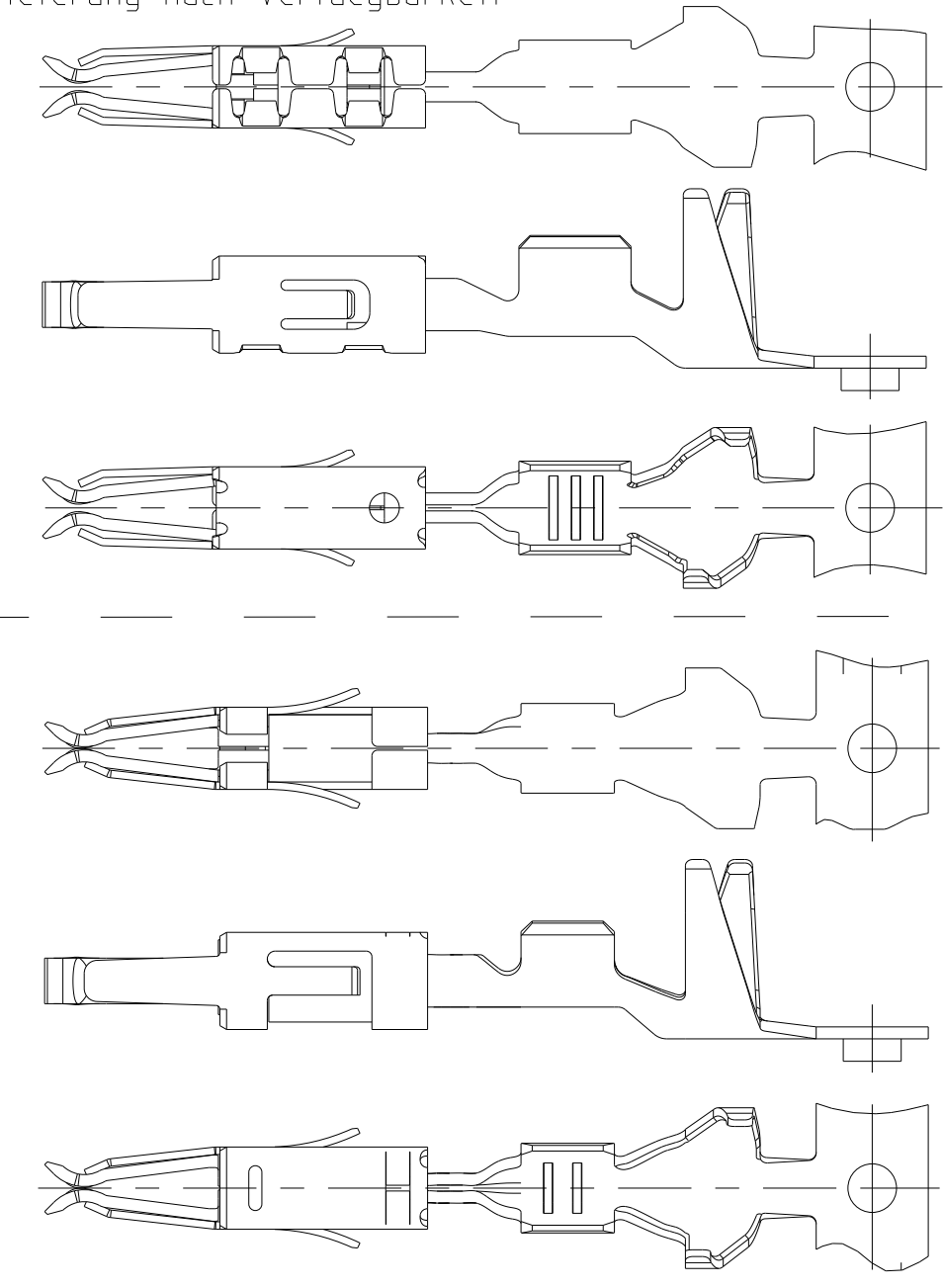
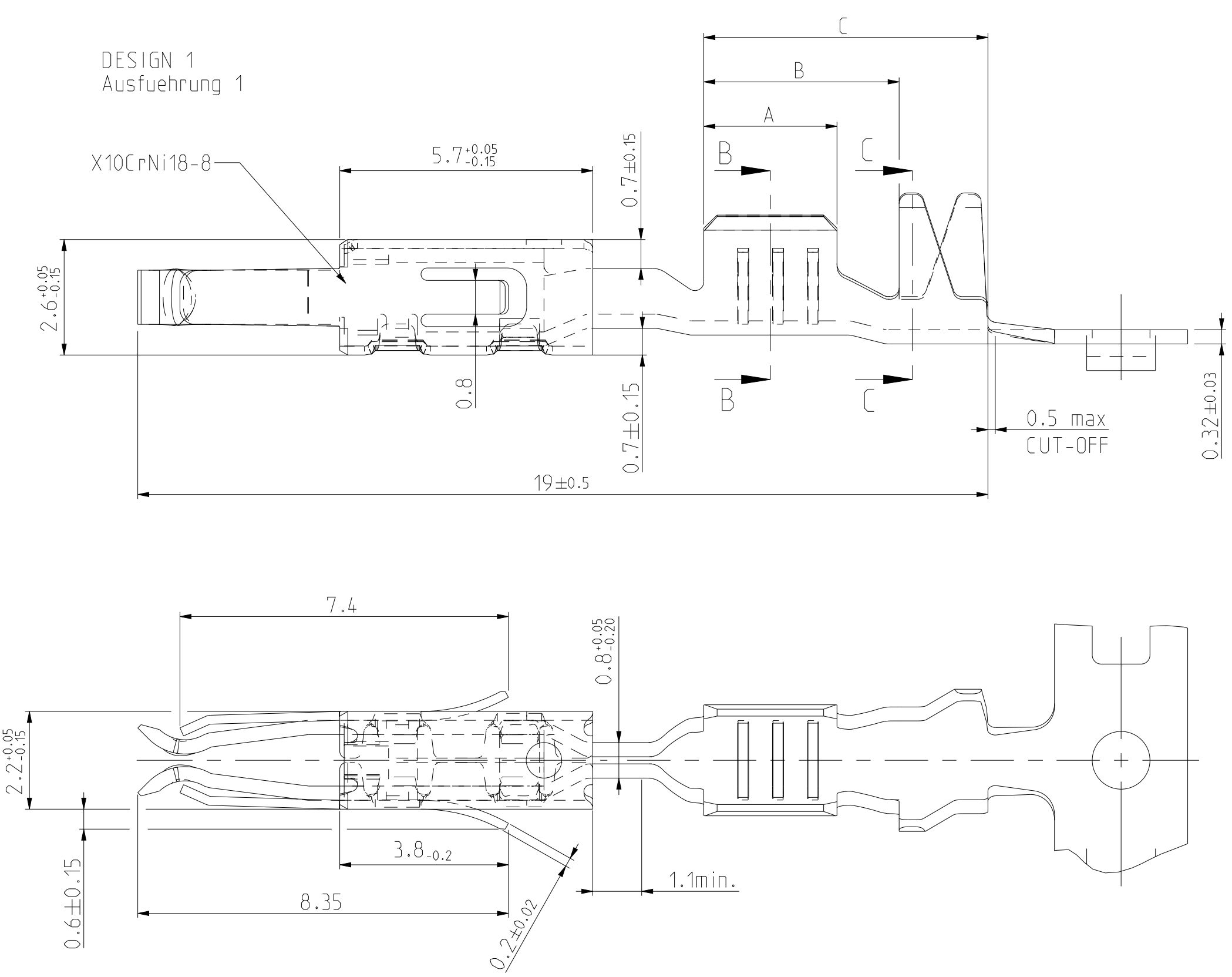


SPRING / Ueberfeder  
 DIFFERENT TOOL DETAILS  
 Verschiedene Werkzeugausfuehrungen  
 FUNCTION AND HANDLING WITH  
 ALL DETAILS CONTINUOUSLY  
 Funktion und Handhabung  
 bei allen Ausfuehrungen gleich  
 SUPPLY BASED ON AVAILABILITY  
 Lieferung nach Verfuegbarkeit

SPRING / Ueberfeder  
 USED ONLY FOR/ Nur verwendet fuer  
 PN 965914  
 PN 969022  
 PN 968052

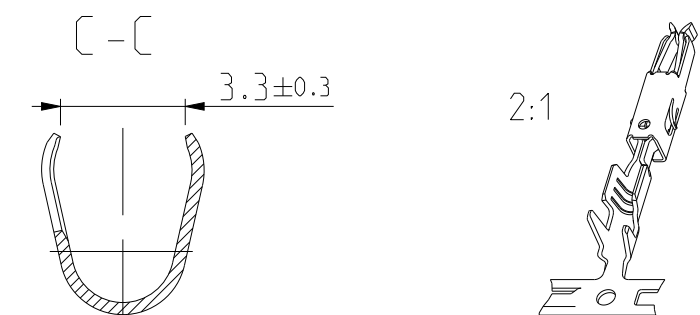
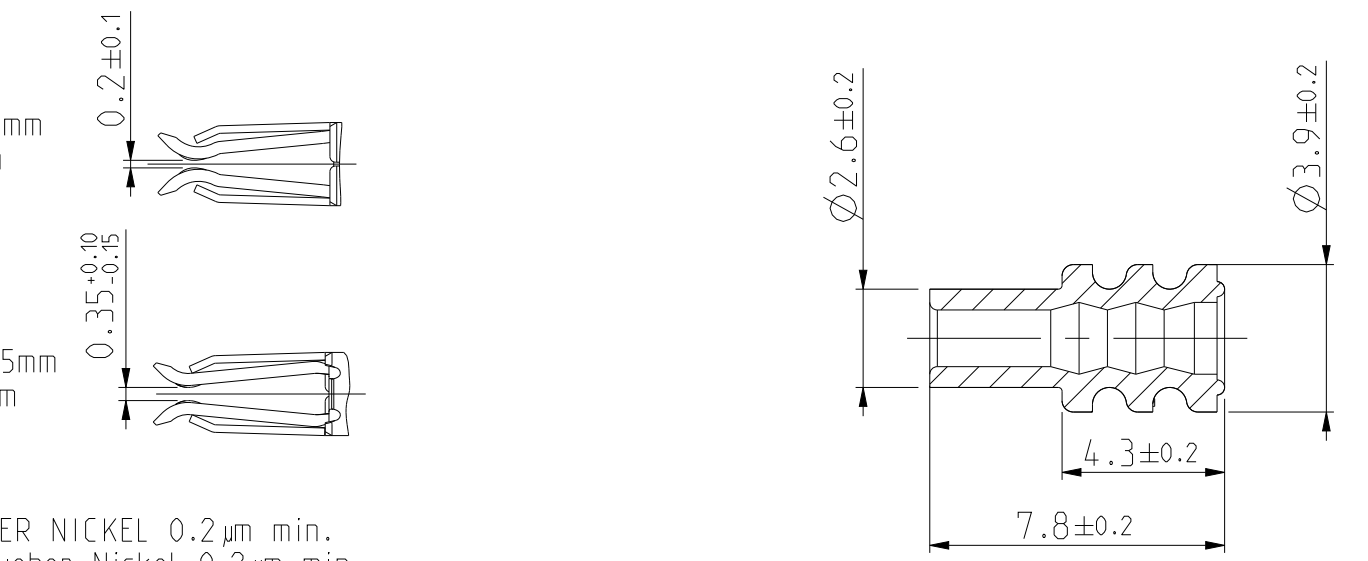
REVISIONS				
P	LTN	DESCRIPTION	DATE	APPV
A7		NEW CREO DRAWING	25.JUL.2014	Ho. Eder
A8		CORRECTED VIEW, ADDED NECK DIMENSION	03APR2018	JP JC
B		CORRECTED VIEWS ACC. PART CHANGES	09DEC12019	JB JJC
B1		ADDED NEW DESIGN 5 APPLIED TO PN 965914	15APR2021	JCB RS



SINGLE WIRE SEAL/ Einzelichtungssystem	REV.	DESIGN Ausfuehrung	MATERIAL Oberflaeche	SURFACE Oberflaeche	WIRE RANGE Drahtgroessen Bereich [mm²]	INSULATION Isolations Ø [mm]	STRIP FROM WIRE CRIMP Drahtcrimp		A	B	C	CRIMP DATA AND CRIMP TOOL Crimpdata u. Crimptwerkzeuge	
							INSUL.-CRIMP Iso.-Crimp Bandware	CRIMP DIMENSION mm Crimpabmessungen mm					
B1	4-1241732-1	B	CuNiSi	5	0.5-1.0 FLR	1.4-2.0	E = 2.5 G = 2.7 DDr = 1.2	H = 4.3 K = 4.8 DISO = 2.7	3.0	4.4	6.4	SEE APPLICATION - SPECIFICATION siehe Verarbeitungsspezifikation 114-18081	
	1241732-2	B	CuFe 2	PRETINNED vorverzinnt									
	1241730-2	B	3	CuFe 2	PRETINNED vorverzinnt	0.2-0.5 FLR	1.15-1.6	E = 2.1 G = 2.1 DDr = 0.8	H = 4.3 K = 4.8 DISO = 2.6	2.5	4.4		6.4
A	1241860-7	A	CuNi12Zn24	PLAIN Blank	0.5-1.0 FLR	1.4-2.1	E = 2.5 G = 2.7 DDr = 1.2	H = 3.2 K = 3.4 DISO = 1.8	3.0	4.4	6.4		
	1241860-2	A	CuFe 2	PRETINNED vorverzinnt									
UNSEALED/ ungeeicht	1241858-2	A	2	CuFe 2	PRETINNED vorverzinnt	0.2-0.5 FLR	1.15-1.6	E = 2.1 G = 2.1 DDr = 0.8	H = 2.9 K = 2.9 DISO = 1.4	2.5	4.4		6.4
	968052-1	B	1	CuFe 2	PRETINNED vorverzinnt	0.5-1.0 FLR	1.4-2.1	E = 2.5 G = 2.7 DDr = 1.2	H = 3.2 K = 3.4 DISO = 1.8	3.0	4.6		7
	969022-1	B	1	CuFe 2	1	0.5-1.0 FLR	1.4-2.1	E = 2.5 G = 2.7 DDr = 1.2	H = 3.2 K = 3.4 DISO = 1.8	3.0	4.6		7
A	965914-2	C	5	CuFe 2	PRETINNED vorverzinnt	0.2-0.5 FLR	1.15-1.6	E = 2.1 G = 2.1 DDr = 0.8	H = 2.9 K = 2.9 DISO = 1.4	2.5	4.6		7
	965914-1	C	1	CuFe 2	1								
TE ORDER NO. STRIP FORM Bandware	REV.	DESIGN Ausfuehrung	MATERIAL Oberflaeche	SURFACE Oberflaeche	WIRE RANGE Drahtgroessen Bereich [mm²]	INSULATION Isolations Ø [mm]	STRIP FROM WIRE CRIMP Drahtcrimp	INSUL.-CRIMP Iso.-Crimp Bandware	A	B	C		CRIMP DATA AND CRIMP TOOL Crimpdata u. Crimptwerkzeuge

- 1 BODY ELECTRO TIN PLATED OVER NICKEL 0.2 µm min.  
Kontaktkoerper gal. verzinkt ueber Nickel 0.2 µm min.  
CONTACT AREA SELECTIV GOLD OVER NICKEL 0.8 µm min.  
Kontaktzone selectiv vergoldet ueber Nickel 0.8 µm min.  
WIRE CRIMP AREA ELECTRO TIN PLATED 1 µm min.  
Drahtcrimpbereich galv. verzinkt 1 µm min.
- 2 ACCORDING INSULATION DIA IS TO CHOOSE THE SINGLE WIRE SEAL  
Entsprechend dem Isolationsdurchmesser ist die  
Einzel-Dichtung auszuwaehlen
- 3 VARIANTS WITH GAP-SIZE 0.2mm  
Varianten mit Gap-Size 0.2mm
- 4 VARIANTS WITH GAP-SIZE 0.35mm  
Varianten mit Gap-Size 0.35mm
- 5 BODY ELECTRO TIN PLATED OVER NICKEL 0.2µm min.  
Kontaktkoerper gal. verzinkt ueber Nickel 0.2µm min.  
CONTACT AREA SELECTIV GOLD OVER NICKEL 0.8 µm min.  
Kontaktzone selectiv vergoldet ueber Nickel 0.8 µm min.  
WIRE CRIMP AREA ELECTRO TIN PLATED 1µm min.  
Drahtcrimpbereich gal. verzinkt
- 6 ADDITIONAL INFORMATION FOR  
SINGLE WIRE SEAL VARIANTS  
Zusaetzliche Information fuer  
einzelgedichtete Varianten

SINGLE WIRE SEAL Einzel-Dichtung		
964972-1	1.9-2.1	YELLOW gelb
963530-1	1.4-1.9	GREY grau
964971-1	1.2-1.6	RED rot
ORDER No. Bestell-Nr.	INSULATION Ø Isolations Ø	COLOUR Farbe



THIS DRAWING IS A CONTROLLED DOCUMENT.

DIMENSIONS: mm	TOLERANCES UNLESS OTHERWISE SPECIFIED:	OWN G. Abraham 12NOV2001	12NOV2001
	0-PLC ±0.2	CHK M. Bleicher 12NOV2001	12NOV2001
	1-PLC ±0.2	APPV T. Meierhoefer 16NOV2001	16NOV2001
	2-PLC ±0.2	NAME M. Bleicher	16NOV2001
	3-PLC ±0.2	PRODUCT SPEC	
	4-PLC ±0.2	108-18386	
	ANGLES ±0.1°	APPLICATION SPEC	
	FINISH	114-18081	
MATERIAL		WEIGHT	
		Customer Drawing	

TE Connectivity  
 PRODUCT GROUP DRAWING FOR  
 MICRO TIMER 3 CONTACT  
 Produkt-Gruppen-Zeichnung fuer Micro Timer 3

SIZE CAGE CODE DRAWING NO. RESTRICTED TO  
 A1 00779 ©=1241916

SCALE 6:1 SHEET 1 OF 1 REV B1