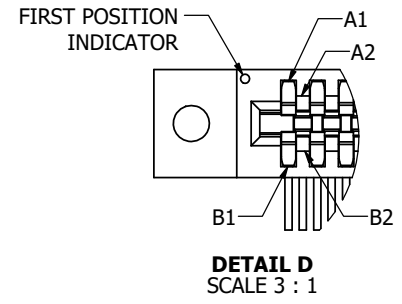
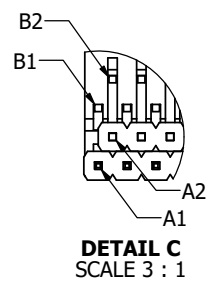
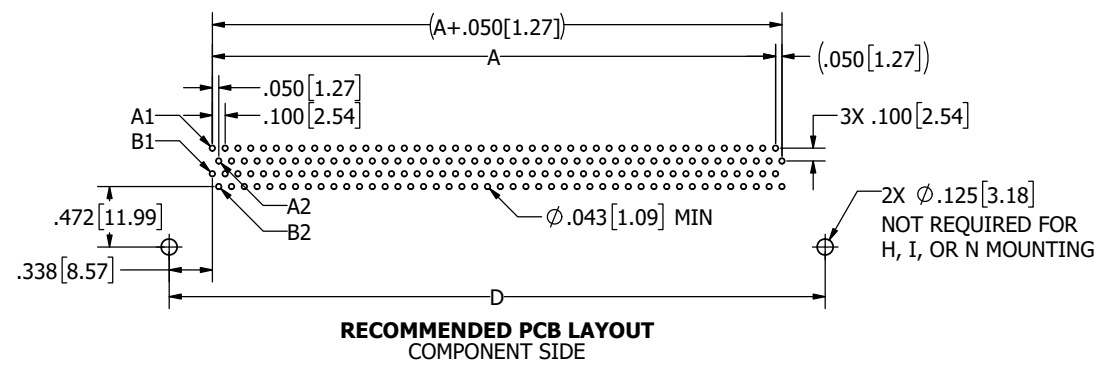
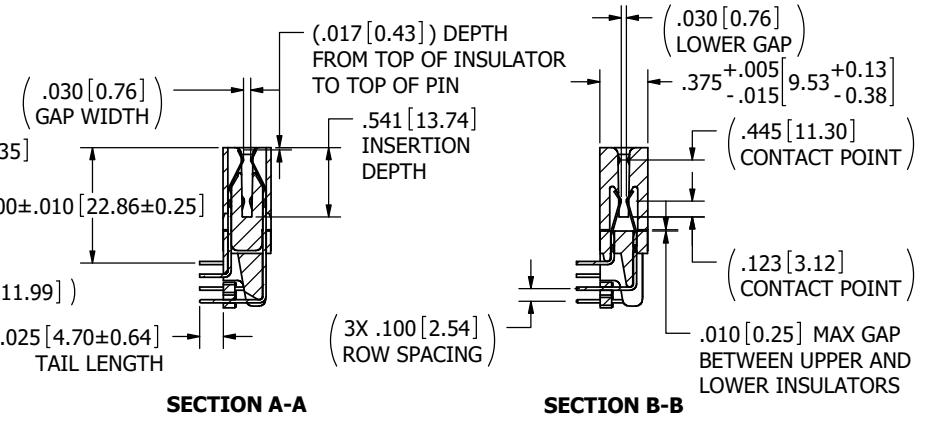
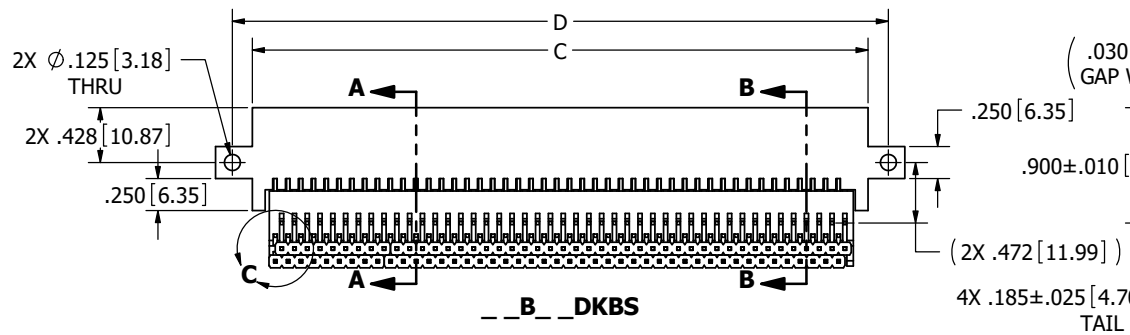
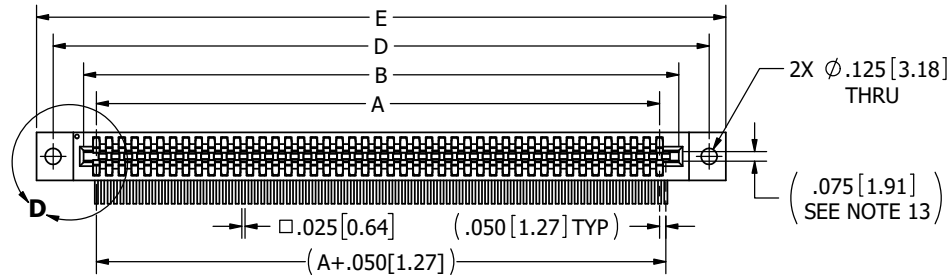


REVISIONS				
REV.	ECO. NO	DESCRIPTION	DATE	BY
H	2475	ADDED POST # TO 100, UPDATED DIM A ( WAS A1 & A2), INSPECTION NOTE 16 & 17, DIM SIDE MTG HOLES TO TOP INSULATOR EDGE, CONTACT GAP .030±.010, INSERTION FORCE 80Z, PROCESSING TIME 20 SEC FOR 'G' & 'J' MTL	10/20/2011	JH
J	3028	UPDATE INSERT FROM FAR SIDE ON 'A' MOUNTING	7/30/2014	JHSU
K	4491	ADD 'F' MTL & 'M' PLATING, UPDATE DAUGHTER, REMOVE 'Y' PLATING, ADD REF TO CONTACT GAP DIM & SIDE HOLE TO 1ST BEND DIM (.472)	8/8/2022	JH

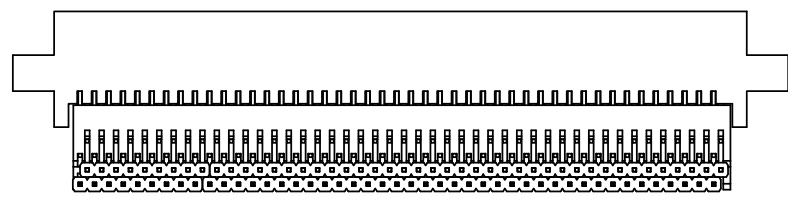
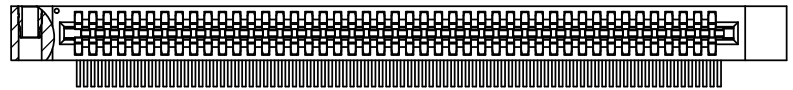
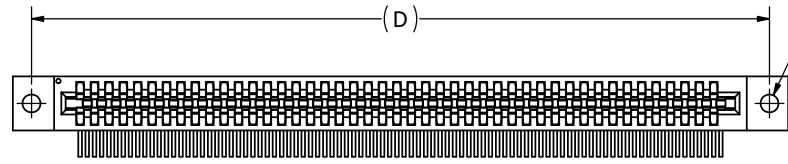


- NOTES:
- INSULATOR MATERIAL: SEE PART NUMBER CODING
  - CONTACT MATERIAL: SEE PART NUMBER CODING
  - PLATING: SEE PART NUMBER CODING
  - OPERATING TEMPERATURE: SEE PART NUMBER CODING
  - PROCESSING TEMP: SEE PART NUMBER CODING
  - UL FLAMMABILITY RATING: 94V-0
  - OPERATING VOLTAGE: 225
  - CURRENT RATING: 3 AMP
  - CONTACT RESISTANCE: 30 MILLI OHMS MAX
  - INSULATION RESISTANCE: 5000 MEGA OHMS
  - DURABILITY: 500 CYCLES MIN
  - CONNECTOR IDENTIFICATION: THE PART SHALL BE MARKED WITH A PART NUMBER AND LOT CODE
  - BOARD THICKNESS ACCOMMODATED:  $.062 \pm .008 [1.57 \pm 0.20]$
  - INSERTION FORCE: 8 OZ MAX PER CONTACT PAIR WHEN USING A  $.062 [1.57]$  TEST BLADE
  - WITHDRAWAL FORCE: 1 OZ MIN PER CONTACT PAIR USING  $.062 [1.57]$  PCB



UNLESS OTHERWISE SPECIFIED: DIMENSIONS ARE IN INCHES (MM)		DRAWN	DATE	NAME	
TOLERANCES: ANGULAR: $\pm 1^\circ$ DECIMALS XX = $\pm .02 [5]$ XXX = $\pm .005 [13]$ XXXX = $\pm .0005 [013]$			5/24/2005	MNH	
THE INFORMATION HEREIN CONTAINS PROPRIETARY INFORMATION OF SULLINS ELECTRONICS AND IS NOT TO BE REPRODUCED, USED OR DISCLOSED TO OTHERS FOR ANY PURPOSE EXCEPT AS SPECIFICALLY AUTHORIZED IN WRITING BY AN OFFICER OF SULLINS ELECTRONICS.		SIZE <b>C</b>	CAGE CODE <b>54453</b>	DWG. NO. <b>C10214</b>	REV <b>K</b>
SCALE: 2:1.5		SHEET 1 OF 4			

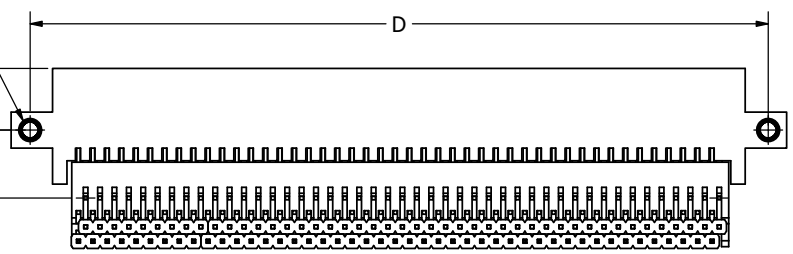
**CUSTOMER COPY**



2X #4-40  
THREADED INSERT  
(FROM FAR SIDE)

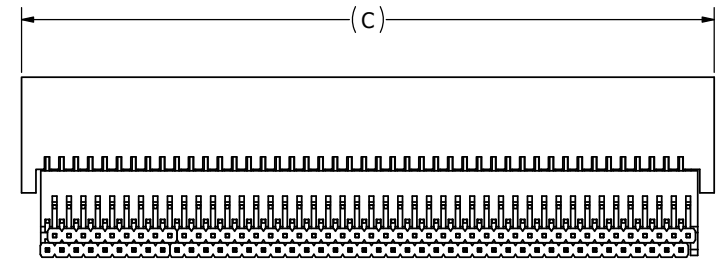
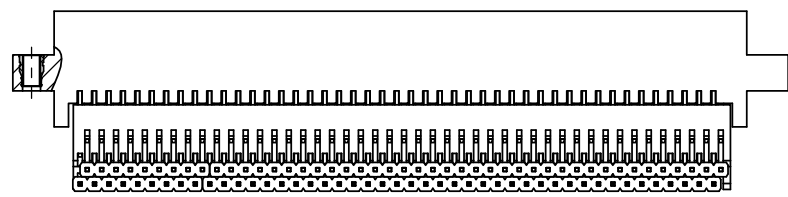
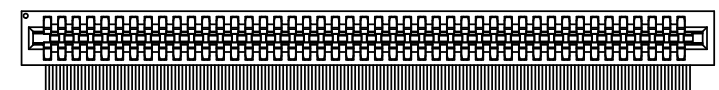
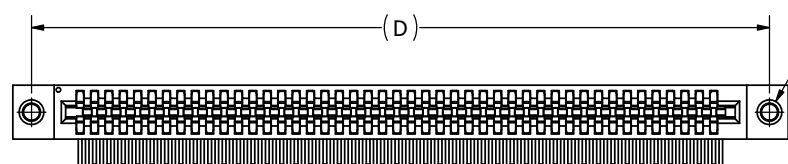
2X .428 [10.87]

(2X .472 [11.99])



\_\_B\_\_DKBH

\_\_B\_\_DKBA



\_\_B\_\_DKBI

\_\_B\_\_DKBN

**CUSTOMER COPY**



UNLESS OTHERWISE SPECIFIED:  
DIMENSIONS ARE IN INCHES (MM)

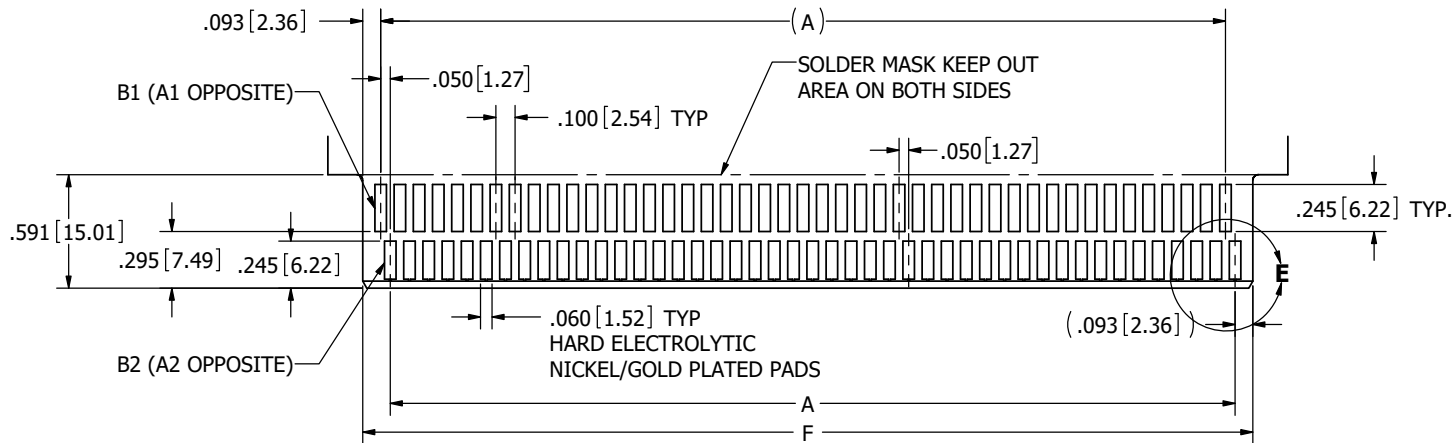
TOLERANCES:

ANGULAR:  $\pm 1^\circ$

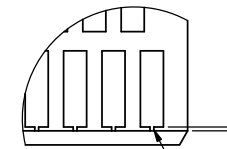
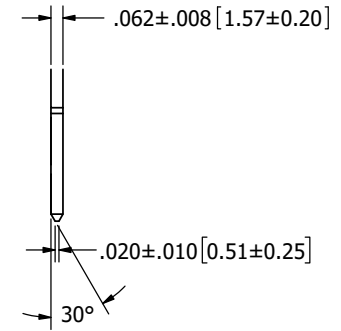
DECIMALS  
.XX =  $\pm .02$  [5]  
.XXX =  $\pm .005$  [13]  
.XXXX =  $\pm .0005$  [013]

DRAWN	DATE	NAME
	5/24/2005	MNH
<small>THE INFORMATION HEREIN CONTAINS PROPRIETARY INFORMATION OF SULLINS ELECTRONICS AND IS NOT TO BE REPRODUCED, USED OR DISCLOSED TO OTHERS FOR ANY PURPOSE EXCEPT AS SPECIFICALLY AUTHORIZED IN WRITING BY AN OFFICER OF SULLINS ELECTRONICS.</small>		

TITLE			
BI-LEVEL, .050 CC, RAB			
PART NUMBER			
__B__DKB__			
SIZE	CAGE CODE	DWG. NO.	REV
C	54453		K
SCALE: 2:1.5			SHEET 2 OF 4

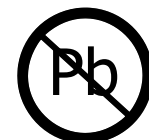


DAUGHTER CARD LAYOUT RECOMMENDED



DETAIL E  
SCALE 4 : 1

CUSTOMER COPY



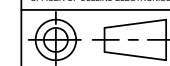
RoHS COMPLIANT

UNLESS OTHERWISE SPECIFIED:  
DIMENSIONS ARE IN INCHES (MM)

TOLERANCES:  
 ANGULAR: ± 1°  
 DECIMALS  
 .XX= ± .02 [5]  
 .XXX= ± .005 [13]  
 .XXXX= ± .0005 [013]

DRAWN	DATE	NAME
	5/24/2005	MNH

THE INFORMATION HEREIN CONTAINS  
 PROPRIETARY INFORMATION OF  
 SULLINS ELECTRONICS AND IS NOT  
 TO BE REPRODUCED, USED OR  
 DISCLOSED TO OTHERS FOR ANY  
 PURPOSE EXCEPT AS SPECIFICALLY  
 AUTHORIZED IN WRITING BY AN  
 OFFICER OF SULLINS ELECTRONICS.



<b>SULLINS</b> CONNECTOR SOLUTIONS			
TITLE			
PART NUMBER B_DKB_-S1062			
SIZE C	CAGE CODE 54453	DWG. NO. C10214	REV K
SCALE: 2:1		SHEET 3 OF 4	

PART NUMBER	POS	INCHES						POS	MILLIMETERS					
		A±.005	B±.005	C±.015	D±.010	E±.020	F		A±0.13	B±0.13	C±0.38	D±0.25	E±0.51	F
B06DKB	6	0.200	0.450	0.610	0.925	1.185	0.436	6	5.08	11.43	15.49	23.50	30.10	11.07
B08DKB	8	0.300	0.550	0.710	1.025	1.285	0.536	8	7.62	13.97	18.03	26.04	32.64	13.61
B10DKB	10	0.400	0.650	0.810	1.125	1.385	0.636	10	10.16	16.51	20.57	28.58	35.18	16.15
B12DKB	12	0.500	0.750	0.910	1.225	1.485	0.736	12	12.70	19.05	23.11	31.12	37.72	18.69
B14DKB	14	0.600	0.850	1.010	1.325	1.585	0.836	14	15.24	21.59	25.65	33.66	40.26	21.23
B16DKB	16	0.700	0.950	1.110	1.425	1.685	0.936	16	17.78	24.13	28.19	36.20	42.80	23.77
B18DKB	18	0.800	1.050	1.210	1.525	1.785	1.036	18	20.32	26.67	30.73	38.74	45.34	26.31
B20DKB	20	0.900	1.150	1.310	1.625	1.885	1.136	20	22.86	29.21	33.27	41.28	47.88	28.85
B22DKB	22	1.000	1.250	1.410	1.725	1.985	1.236	22	25.40	31.75	35.81	43.82	50.42	31.39
B24DKB	24	1.100	1.350	1.510	1.825	2.085	1.336	24	27.94	34.29	38.35	46.36	52.96	33.93
B26DKB	26	1.200	1.450	1.610	1.925	2.185	1.436	26	30.48	36.83	40.89	48.90	55.50	36.47
B28DKB	28	1.300	1.550	1.710	2.025	2.285	1.536	28	33.02	39.37	43.43	51.44	58.04	39.01
B30DKB	30	1.400	1.650	1.810	2.125	2.385	1.636	30	35.56	41.91	45.97	53.98	60.58	41.55
B32DKB	32	1.500	1.750	1.910	2.225	2.485	1.736	32	38.10	44.45	48.51	56.52	63.12	44.09
B34DKB	34	1.600	1.850	2.010	2.325	2.585	1.836	34	40.64	46.99	51.05	59.06	65.66	46.63
B36DKB	36	1.700	1.950	2.110	2.425	2.685	1.936	36	43.18	49.53	53.59	61.60	68.20	49.17
B38DKB	38	1.800	2.050	2.210	2.525	2.785	2.036	38	45.72	52.07	56.13	64.14	70.74	51.71
B40DKB	40	1.900	2.150	2.310	2.625	2.885	2.136	40	48.26	54.61	58.67	66.68	73.28	54.25
B42DKB	42	2.000	2.250	2.410	2.725	2.985	2.236	42	50.80	57.15	61.21	69.22	75.82	56.79
B44DKB	44	2.100	2.350	2.510	2.825	3.085	2.336	44	53.34	59.69	63.75	71.76	78.36	59.33
B46DKB	46	2.200	2.450	2.610	2.925	3.185	2.436	46	55.88	62.23	66.29	74.30	80.90	61.87
B48DKB	48	2.300	2.550	2.710	3.025	3.285	2.536	48	58.42	64.77	68.83	76.84	83.44	64.41
B50DKB	50	2.400	2.650	2.810	3.125	3.385	2.636	50	60.96	67.31	71.37	79.38	85.98	66.95
B52DKB	52	2.500	2.750	2.910	3.225	3.485	2.736	52	63.50	69.85	73.91	81.92	88.52	69.49
B54DKB	54	2.600	2.850	3.010	3.325	3.585	2.836	54	66.04	72.39	76.45	84.46	91.06	72.03
B56DKB	56	2.700	2.950	3.110	3.425	3.685	2.936	56	68.58	74.93	78.99	87.00	93.60	74.57
B58DKB	58	2.800	3.050	3.210	3.525	3.785	3.036	58	71.12	77.47	81.53	89.54	96.14	77.11
B60DKB	60	2.900	3.150	3.310	3.625	3.885	3.136	60	73.66	80.01	84.07	92.08	98.68	79.65
B62DKB	62	3.000	3.250	3.410	3.725	3.985	3.236	62	76.20	82.55	86.61	94.62	101.22	82.19
B64DKB	64	3.100	3.350	3.510	3.825	4.085	3.336	64	78.74	85.09	89.15	97.16	103.76	84.73
B66DKB	66	3.200	3.450	3.610	3.925	4.185	3.436	66	81.28	87.63	91.69	99.70	106.30	87.27
B68DKB	68	3.300	3.550	3.710	4.025	4.285	3.536	68	83.82	90.17	94.23	102.24	108.84	89.81
B70DKB	70	3.400	3.650	3.810	4.125	4.385	3.636	70	86.36	92.71	96.77	104.78	111.38	92.35
B72DKB	72	3.500	3.750	3.910	4.225	4.485	3.736	72	88.90	95.25	99.31	107.32	113.92	94.89
B74DKB	74	3.600	3.850	4.010	4.325	4.585	3.836	74	91.44	97.79	101.85	109.86	116.46	97.43
B76DKB	76	3.700	3.950	4.110	4.425	4.685	3.936	76	93.98	100.33	104.39	112.40	119.00	99.97
B78DKB	78	3.800	4.050	4.210	4.525	4.785	4.036	78	96.52	102.87	106.93	114.94	121.54	102.51
B80DKB	80	3.900	4.150	4.310	4.625	4.885	4.136	80	99.06	105.41	109.47	117.48	124.08	105.05
B82DKB	82	4.000	4.250	4.410	4.725	4.985	4.236	82	101.60	107.95	112.01	120.02	126.62	107.59
B84DKB	84	4.100	4.350	4.510	4.825	5.085	4.336	84	104.14	110.49	114.55	122.56	129.16	110.13
B86DKB	86	4.200	4.450	4.610	4.925	5.185	4.436	86	106.68	113.03	117.09	125.10	131.70	112.67
B88DKB	88	4.300	4.550	4.710	5.025	5.285	4.536	88	109.22	115.57	119.63	127.64	134.24	115.21
B90DKB	90	4.400	4.650	4.810	5.125	5.385	4.636	90	111.76	118.11	122.17	130.18	136.78	117.75
B92DKB	92	4.500	4.750	4.910	5.225	5.485	4.736	92	114.30	120.65	124.71	132.72	139.32	120.29
B94DKB	94	4.600	4.850	5.010	5.325	5.585	4.836	94	116.84	123.19	127.25	135.26	141.86	122.83
B96DKB	96	4.700	4.950	5.110	5.425	5.685	4.936	96	119.38	125.73	129.79	137.80	144.40	125.37
B98DKB	98	4.800	5.050	5.210	5.525	5.785	5.036	98	121.92	128.27	132.33	140.34	146.94	127.91
B100DKB	100	4.900	5.150	5.310	5.625	5.885	5.136	100	124.46	130.81	134.87	142.88	149.48	130.45

**PART NUMBER CODING**

B DKB

**MATERIALS (INSULATOR / CONTACT)**

**G = BLACK PA9T / PHOSPHOR BRONZE**

OPERATING TEMP: -65°C TO +125°C

PROCESSING TEMP: 260°C MAX FOR 20 SECS

**J = BLACK PA9T / BERYLLIUM COPPER**

OPERATING TEMP: -65°C TO +150°C

PROCESSING TEMP: 260°C MAX FOR 20 SECS

**F = BROWN PPS / SPINODAL (CONSULT FACTORY)**

OPERATING TEMP: -65°C TO +200°C

PROCESSING TEMP: 260°C MAX FOR 20 SECS

CONSULT FACTORY FOR SPECIAL SOLDERING GUIDELINES

AVAILABLE IN OVERALL GOLD ONLY (M PLATING)

(CONSULT FACTORY FOR OTHER MATERIALS)

**MOUNTING STYLE**

H = ø.125[3.18] MOUNTING HOLES (PAGE 2)

S = ø.125[3.18] SIDE MOUNTING HOLES (PAGE 1)

I = #4-40 THREADED INSERTS (PAGE 2)

A = #4-40 THREADED INSERTS IN SIDE HOLES (PAGE 2)

N = NO MOUNTING EARS (PAGE 2)

**NUMBER OF POSITIONS**

(CONTACT PER ROW)

**PLATING**

ALL PLATINGS ARE LEAD FREE AND HAVE .000050" NICKEL UNDERPLATE

**CONTACT SURFACE TERMINATION**

B = .000010" GOLD .000100" PURE TIN, MATTE

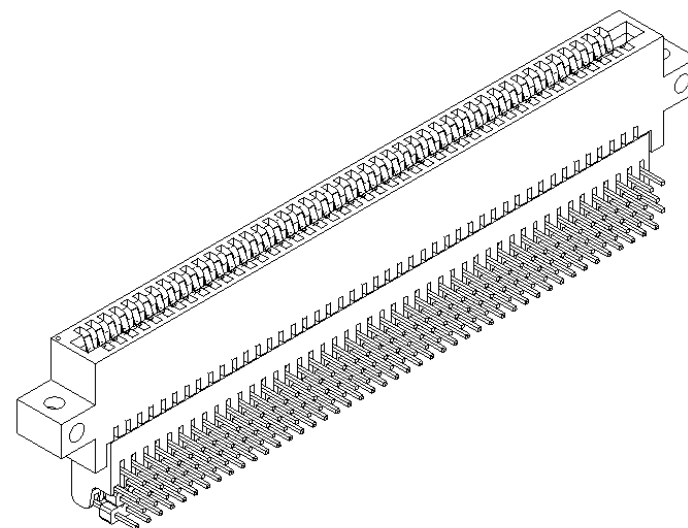
C = .000030" GOLD .000100" PURE TIN, MATTE

M = .000030" GOLD .000010" GOLD OVERALL

(M PLATING AVAILABLE IN 'F' MATERIAL ONLY)



RoHS COMPLIANT



**CUSTOMER COPY**

UNLESS OTHERWISE SPECIFIED, DIMENSIONS ARE IN INCHES (MM)	DRAWN	DATE	NAME
		5/24/2005	MNH
TOLERANCES:	THE INFORMATION HEREIN CONTAINS PROPRIETARY INFORMATION OF SULLINS ELECTRONICS AND IS NOT TO BE REPRODUCED, USED OR DISCLOSED TO OTHERS FOR ANY PURPOSE EXCEPT AS SPECIFICALLY AUTHORIZED IN WRITING BY AN OFFICER OF SULLINS ELECTRONICS.		
ANGULAR: ± 1°			
DECIMALS			
.XX = ± .02 [5]			
.XXX = ± .005 [13]			
.XXXX = ± .0005 [013]			



TITLE BI-LEVEL, .050 CC, RAB

PART NUMBER B DKB

SIZE C CAGE CODE 54453

DWG. NO. C10214 REV K

SCALE: 2:1

SHEET 4 OF 4