



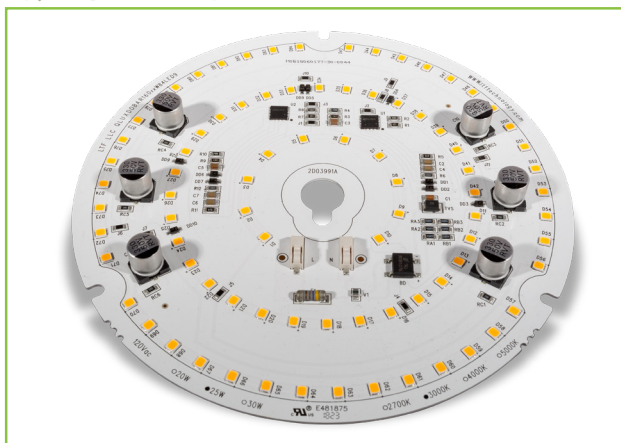
L.T.F.

QLUX DOB AC Line Voltage LED Series



QLUXDOB16025W84LED9 25W 160mm Round LED Board

QLUX DOB



| | |
|-----------------------|-------------------------------|
| Wattage | 25W |
| Power Factor | 0.99 |
| CRI | 92.1 |
| CCT Options | 2700K, 3000K |
| Luminous Flux | ≈ 2128 lm |
| Efficacy | ≈ 85 lm/W |
| Number of LEDs | 84 |
| Beam Angle | 160° |
| Dimensions | 160mm (OD) |
| Dimming | ELV & Triac Optional 0-10V |



RoHS



NOTE: Measurements based on 3000K CCT model.

FEATURES

- Driver On Board technology - No external LED driver required.
- CCT options 2700K, 3000K.
- Superior color rendering ≈ 92.6 CRI .
- High efficacy lumen output up to ≈ 117 lm/W.
- LM-80 compliant LEDs.
- Tight binning 3 step Mac Adam Ellipses.
- Uniform & crisp light source intensity.
- Hot spot free design.
- California Title 24 Compliant.

- Extra thin low profile.
- Low heat generation, easy thermal management.
- Easy to fit in new design or retrofit applications.
- 277V AC option available.
- L70 > 60,000 Hours



APPLICATIONS

- Residential and Commercial
- New or Retrofit OEM Fixtures

ELECTRICAL SPECIFICATIONS

| Model # | Input | Wattage | CCT Options | Luminous Flux |
|-------------------------|--------------------------|---------|-------------|---------------|
| QLUXDOBAR16025W84LED927 | 120V AC 0.21A 50/60Hz | 25W | 2700K | ≈ 2100 lm |
| QLUXDOBAR16025W84LED930 | | | 3000K | ≈ 2128 lm |



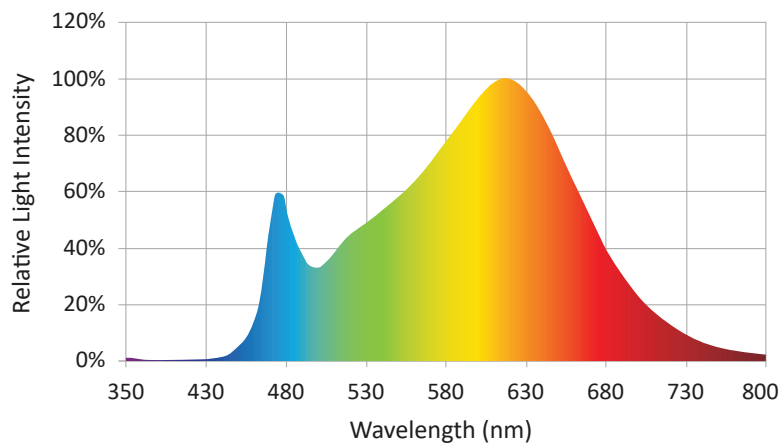
L.T.F.

QLUX DOB AC Line Voltage LED Series



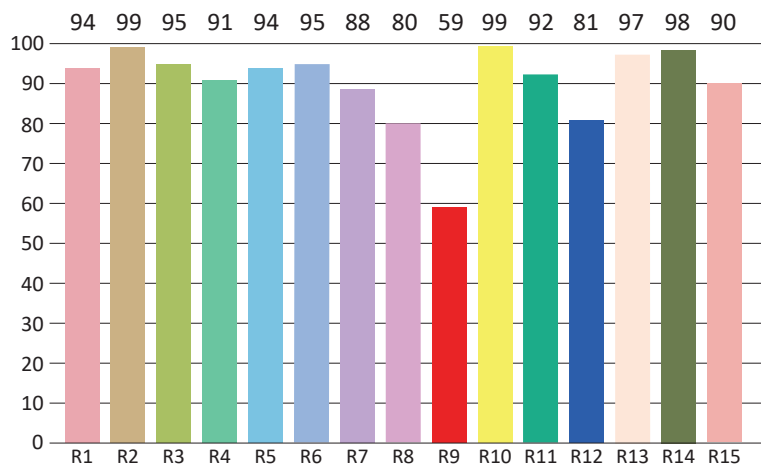
QLUXDOB16025W84LED9
25W 160mm Round LED Board

SPECTRORADIOMETRIC CHARACTERISTICS - 3000K



Luminous Flux: 2128 lm
Radiant Flux: 7.589 W
Efficacy: 85.1 lm/W
Nominal CCT: ANSI_F3000K
 $x_0=0.4400$ $y_0=0.4030$
Chromaticity Coordinates:
 $x=0.4285$ $y=0.3944$ $u'=0.2493$ $v'=0.5162$
Chromaticity Difference: -0.00272 Duv
CCT: 3067 K

CRI TEST RESULTS - 3000K



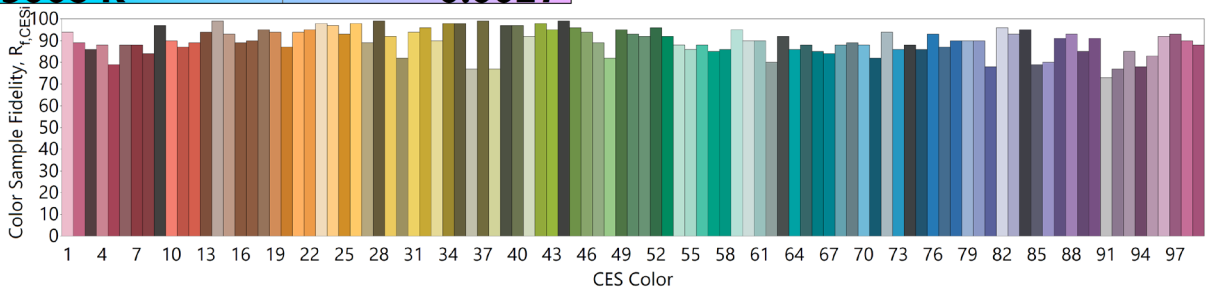
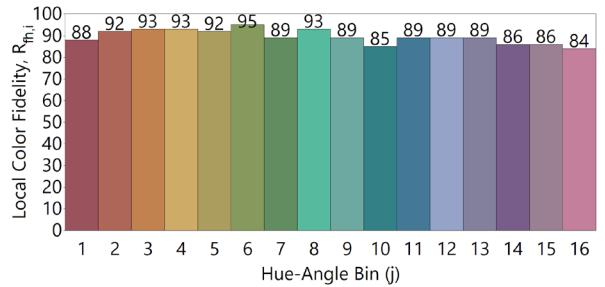
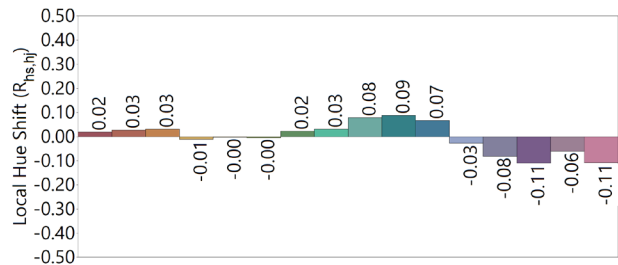
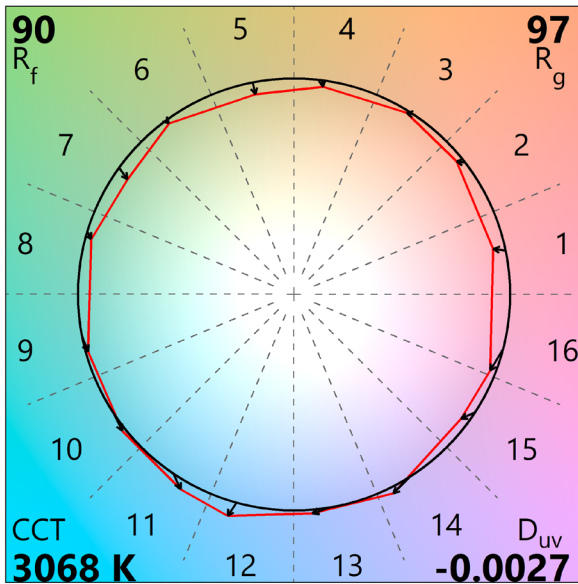
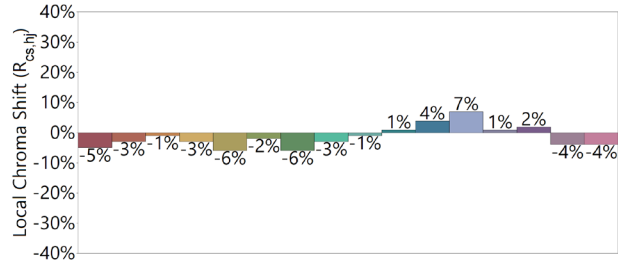
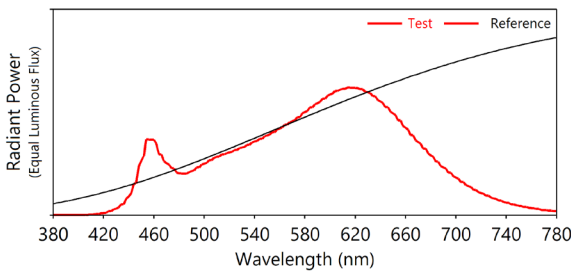
Color Rendering Index (CRI): 92.1
Dominant Wavelength: 582.0 nm(E)
Peak Wavelength: 615nm
Colour Fidelity Index: Rf=88
Gamut Index: Rg=96
Color Purity: 0.4721
Color Ratio: Kr=44.1% Kg=47.0% Kb=8.9%
Color Tolerance (SDCM): 5.8
Bandwidth: 155.5nm
Photosynthetically Active Radiation (PAR): 7.18W
Photosynthetic Photon Flux (PPF): 35.11 $\mu\text{mol/s}$

| | | | | | | | |
|-------|--------|--------|--------|--------|--------|--------|-------|
| R1=94 | R2=99 | R3=95 | R4=91 | R5=94 | R6=95 | R7=88 | R8=80 |
| R9=59 | R10=99 | R11=92 | R12=81 | R13=97 | R14=98 | R15=90 | Re=90 |



QLUXDOB16025W84LED9
25W 160mm Round LED Board

IES TM-30-18 Test Results - 3000K





L.T.F.

QLUX DOB AC Line Voltage LED Series



QLUXDOB16025W84LED9
25W 160mm Round LED Board

ABSOLUTE MAXIMUM RATINGS (Ta=25°C)

| Parameter | Symbol | Value | Unit |
|------------------------|--------|----------|------|
| Voltage | V in | 132 | Vac |
| Operating Temperature | --- | -35~+50 | °C |
| LED Solder Temperature | Ts | 110 | °C |
| Storage Temperature | Tstg | -40~+100 | °C |
| ESD Sensitivity (HBM) | --- | ±4000 | V |
| Surge | --- | 2500 | Vac |

MECHANICAL SPECIFICATIONS

| LED Board Dimensions |
|----------------------|
| 160mm (OD) |

