

REVISION Q

TABLE 1

| PART NUMBER | END 2 | "A" REF | "B" |
|------------------|-------|---------------|---------------|
| RPCU-X-00.25-AMS | -AM | 250.0 [9.84] | 292.8 [11.53] |
| | -BC | 250.0 [9.84] | 275.0 [10.83] |
| | -BM | 250.0 [9.84] | 292.8 [11.53] |
| RPCU-X-00.50-AMS | -AM | 500.0 [19.69] | 542.8 [21.37] |
| | -BC | 500.0 [19.69] | 525.0 [20.67] |
| | -BM | 500.0 [19.69] | 542.8 [21.37] |
| RPCU-X-00.25-BMS | -AM | 250.0 [9.84] | 293.4 [11.55] |
| | -BC | 250.0 [9.84] | 275.0 [10.83] |
| | -BM | 250.0 [9.84] | 293.4 [11.55] |
| RPCU-X-00.50-BMS | -AM | 500.0 [19.69] | 543.4 [21.39] |
| | -BC | 500.0 [19.69] | 525.6 [20.69] |
| | -BM | 500.0 [19.69] | 543.4 [21.39] |

DO NOT SCALE FROM THIS PRINT

DESIGNED & DIMENSIONED IN MILLIMETERS [INCHES]

RPCU-X-XX.XX-XXX-XX

PLATING SPECIFICATION

-G: .000030 GOLD ON CONTACT AREAS, NICKEL ON SHELLS

CABLE LENGTH*

-XX.XX: "A" (SEE TABLE 1)
(0.12M[4.724] MIN - 50.00M[1968.504] MAX)

NOTE:

*-00.25 AND -00.50 ARE CATALOG STANDARD LENGTHS, FOR OTHER LENGTHS CONTACT SAMTEC

END 2 OPTION

-AM: USB A NOT SEALED (USB A END NOT SEALED ONLY) (SEE SHEET 1, FIG 1)
-BC: BLUNT CUT (SEE SHEET 3, FIG 2)
-BM: USB B NOT SEALED ONLY (USB B END NOT SEALED ONLY) (SEE SHEET 3, FIG 3)

END 1 OPTION

-AMS: SEALED USB A (USB A END SEALED ONLY)
-BMS: SEALED USB B (USB B END SEALED ONLY)

THIS PRODUCT MANUFACTURED WITH LEAD-FREE PROCESSING

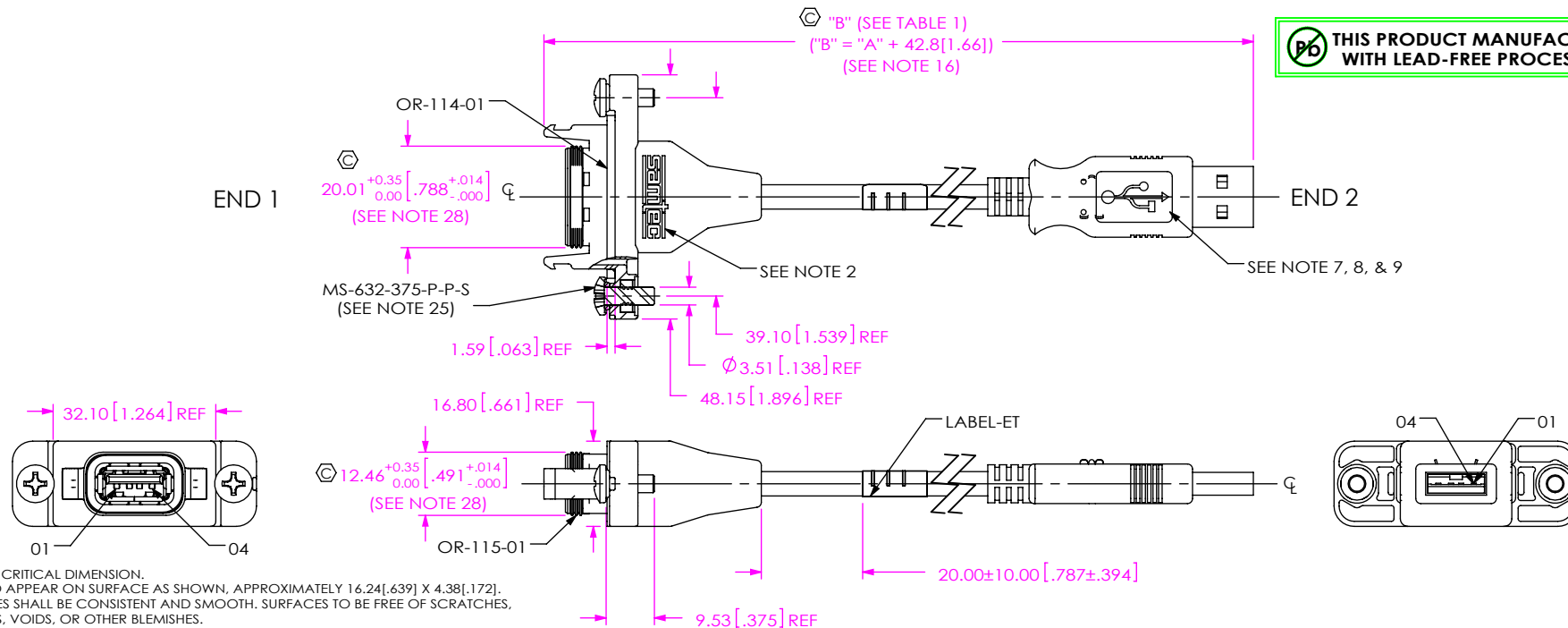


FIG 1
RPCU-X-XX.XX-AMS-AM SHOWN

NOTES:

- CRITICAL DIMENSION.
- SAMTEC LOGO TO APPEAR ON SURFACE AS SHOWN, APPROXIMATELY 16.24[.639] X 4.38[.172].
- MOLDED SURFACES SHALL BE CONSISTENT AND SMOOTH. SURFACES TO BE FREE OF SCRATCHES, NICKS, SINK AREAS, VOIDS, OR OTHER BLEMISHES.
- ALL MULTIPLE CAVITY MOLDS SHALL IDENTIFY EACH CAVITY WITH A NUMBER DESIGNATION LOCATED WHERE SHOWN.
- ALL IDENTIFICATION MARKS SHALL NOT STAND GREATER THAN 0.05[.002] OFF THE SURFACE OF THE PART.
- MOLD TO BE INSERTED TO ACCEPT DIFFERENT CABLE DIAMETERS.
- SURFACE TO BE RECESSED 0.25[.010].
- USB LOGO TO BE RAISED 0.25[.010].
- USB LOGO TO BE ALIGNED TO USB CONNECTORS AS SHOWN.
- LENGTHS GREATER THAN 05.00M[196.850] ARE NOT SUPPORTED.
- ASSEMBLY TO BE 100% ELECTRICAL TESTED FOR OPENS AND SHORTS BEFORE OVERMOLD AND AFTER FINAL ASSEMBLY. AFTER FINAL ELECTRICAL TEST, LABEL EACH ASSEMBLY WITH 1 LABEL-ET. TEST VOLTAGE TO BE 300V.
- ALL EJECTION PIN AND GATE LOCATIONS MUST BE APPROVED BY SAMTEC PRODUCT ENGINEERING.
- ANY ADDITIONAL VOIDING AND/OR MODIFICATIONS TO VOIDING MUST BE APPROVED BY SAMTEC PRODUCT ENGINEERING.
- ALL DRAFT MUST BE WITHIN THE SPECIFIED TOLERANCES.
- ALL INSIDE/OUTSIDE RADII 0.13[.005] MAX UNLESS OTHERWISE STATED.
- TOLERANCE SHALL BE ± 2% FOR ALL LENGTHS.
- THIS IS A COMPONENT OF USBP-A-01-G-B-01 (CALLED OUT ON THE BOM), BUT LABELED INDIVIDUALLY FOR ASSEMBLY PURPOSES.
- THIS IS A COMPONENT OF USBP-B-01-G-B-01 (CALLED OUT ON THE BOM), BUT LABELED INDIVIDUALLY FOR ASSEMBLY PURPOSES.
- PROTECT ENDS WITH ASBBLT4X5.5 BUBBLE BAGS PER PACKAGING MANUAL.
- REFERENCE CO-AU-WI-3032-M FOR WORKMANSHIP.
- ANY CHANGE MADE TO -AM & -BM OVERMOLD MUST BE MADE TO SCPU-17-X-XX.XX-XXX-XXX.
- NOTE DELETED.
- NOTE DELETED.
- PANEL THICKNESS: 0.76[.030] - 3.96[.156]. RECOMMENDED PANEL CUT OUT ON SHEET 2.
- SEAL O-RING IS INCLUDED IN THE MS-632-375-P-P-S.
- NOTE DELETED.
- MAXIMUM TORQUE ON MS-632-375-P-P-S: 60 IN-OZ.
- DO NOT INCLUDE O-RING FLASH IN THIS MEASUREMENT. FLASH OF .15MM MAX ALLOWED ON O-RINGS.
- NOTE DELETED.
- REFER TO MD-XXX-XX-XXXX-XX FOR SAMTEC MATERIAL PART NUMBER.

UNLESS OTHERWISE SPECIFIED, DIMENSIONS ARE IN MILLIMETERS.

TOLERANCES ARE:

DECIMALS ANGLES
X.X: ±0.3 [0.1] 2°
X.XX: ±0.13 [0.05]
X.XXX: ±0.051 [0.020]

PROPRIETARY NOTE

THIS DOCUMENT CONTAINS CONFIDENTIAL AND PROPRIETARY INFORMATION AND ALL DESIGN, MANUFACTURING, REPRODUCTION, USE, PATENT RIGHTS AND SALES RIGHTS ARE EXPRESSLY RESERVED BY SAMTEC, INC. THIS DOCUMENT SHALL NOT BE DISCLOSED, IN WHOLE OR PART, TO ANY UNAUTHORIZED PERSON OR ENTITY NOR REPRODUCED, TRANSFERRED OR INCORPORATED IN ANY OTHER PROJECT IN ANY MANNER WITHOUT THE EXPRESS WRITTEN CONSENT OF SAMTEC, INC.



520 PARK EAST BLVD. NEW ALBANY, IN 47150
PHONE: 812-944-6733 FAX: 812-948-5047
e-Mail: info@SAMTEC.com code 55322

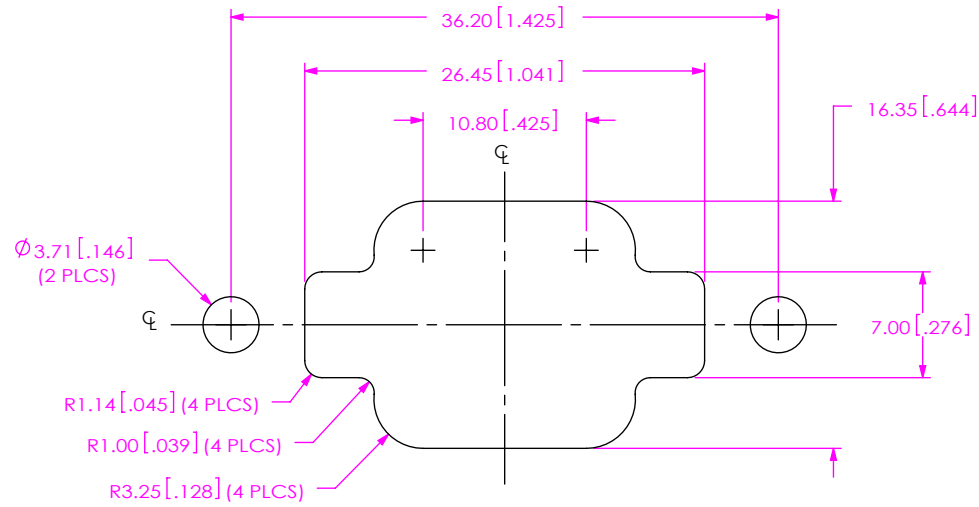
MATERIAL: DO NOT SCALE DRAWING SHEET SCALE: 3:4
INSULATOR: LCP UL94V0, COLOR: BLACK
CONTACT: PHOS BRONZE
SHIELD: PHOS BRONZE
SEALED OVERMOLD: RITEFLEX (640-RD30565P62-BLACK)
NON-SEALED OVERMOLD: PVC (ALP-411-75-BK-2885)
MAX REGRIND: 30 %
MAX PLASTIC FLASH: .13MM

DESCRIPTION:
RECTANGULAR PANEL MOUNT CABLE USB

DWG. NO.
RPCU-X-XX.XX-XXX-XX

BY: T NEWTON 05/07/2010 SHEET 1 OF 11

RECOMMENDED PANEL CUT OUT - TYPE B
(SEE NOTE 27)



RECOMMENDED PANEL CUT OUT - TYPE A
(SEE NOTE 27)

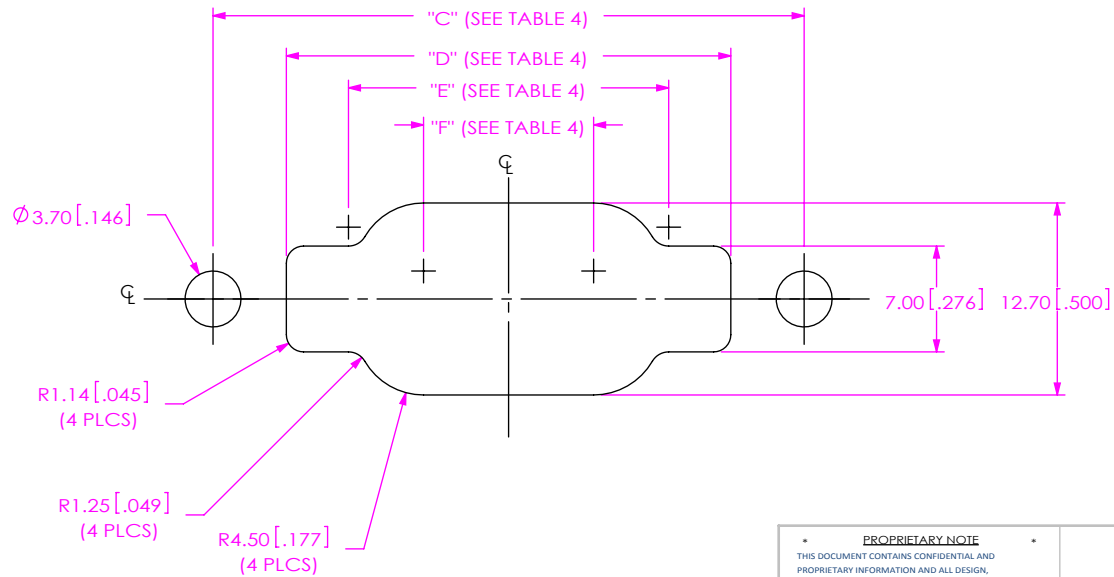


TABLE 4

| No. OF POS. | "C" | "D" | "E" | "F" |
|-------------|-------------|-------------|-------------|-------------|
| -01 | 39.10[1.54] | 29.40[1.16] | 21.18[0.83] | 11.25[0.44] |
| -02 | 60.75[2.39] | 51.05[2.01] | 42.83[1.69] | 32.90[1.30] |

PROPRIETARY NOTE

THIS DOCUMENT CONTAINS CONFIDENTIAL AND PROPRIETARY INFORMATION AND ALL DESIGN, MANUFACTURING, REPRODUCTION, USE, PATENT RIGHTS AND SALES RIGHTS ARE EXPRESSLY RESERVED BY SAMTEC, INC. THIS DOCUMENT SHALL NOT BE DISCLOSED, IN WHOLE OR PART, TO ANY UNAUTHORIZED PERSON OR ENTITY NOR REPRODUCED, TRANSFERRED OR INCORPORATED IN ANY OTHER PROJECT IN ANY MANNER WITHOUT THE EXPRESS WRITTEN CONSENT OF SAMTEC, INC.

DO NOT SCALE DRAWING

SHEET SCALE: 1:1



520 PARK EAST BLVD, NEW ALBANY, IN 47150
PHONE: 812-944-6733 FAX: 812-948-5047
e-Mail info@SAMTEC.com code 55322

DESCRIPTION:
RECTANGULAR PANEL MOUNT CABLE USB

DWG. NO.
RPCU-X-XX.XX-XXX-XX

BY: T NEWTON 05/07/2010 SHEET 2 OF 11

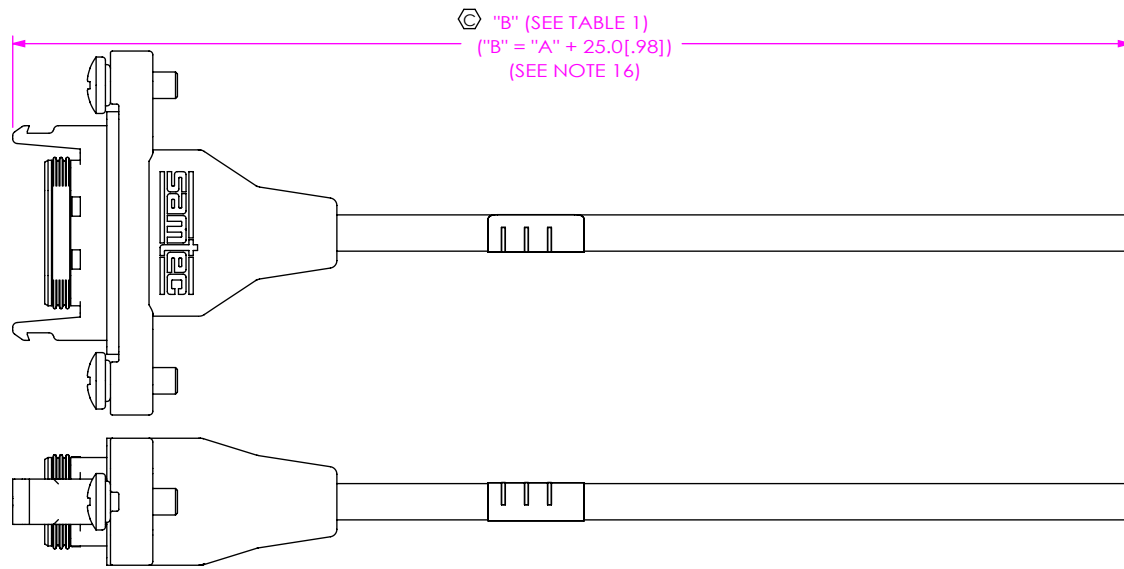


FIG 2
RPCU-X-XX.XX-AMS-BC SHOWN
(DIFFERENT AS SHOWN, OTHERWISE SAME AS FIG 1)

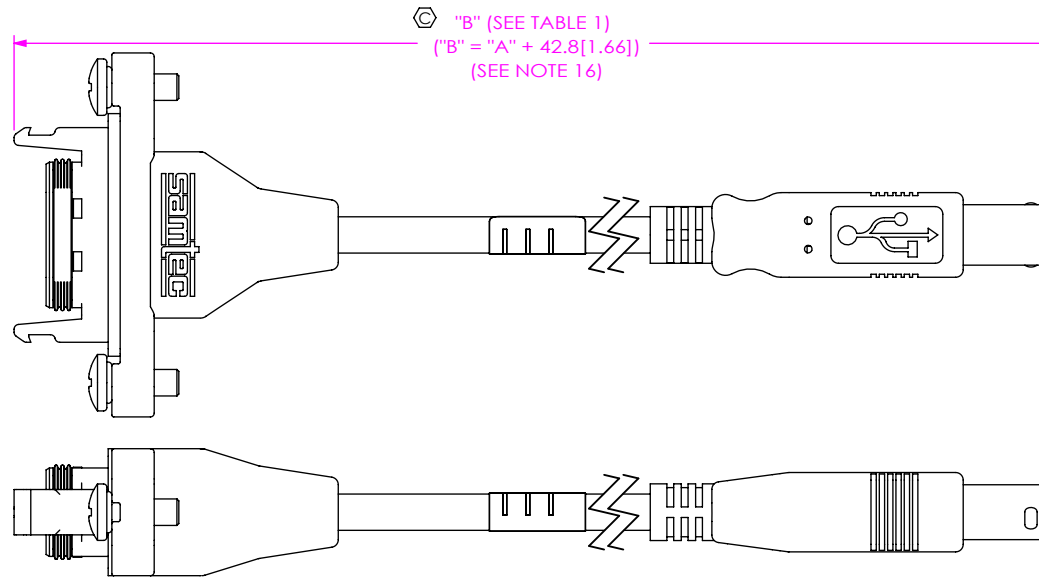
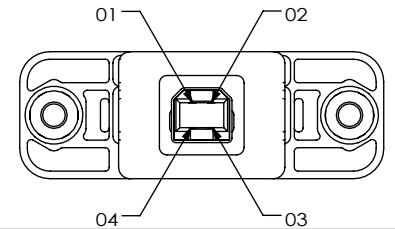


FIG 3
RPCU-X-XX.XX-AMS-BM SHOWN
(DIFFERENT AS SHOWN, OTHERWISE SAME AS FIG 1)



PROPRIETARY NOTE
THIS DOCUMENT CONTAINS CONFIDENTIAL AND PROPRIETARY INFORMATION AND ALL DESIGN, MANUFACTURING, REPRODUCTION, USE, PATENT RIGHTS AND SALES RIGHTS ARE EXPRESSLY RESERVED BY SAMTEC, INC. THIS DOCUMENT SHALL NOT BE DISCLOSED, IN WHOLE OR PART, TO ANY UNAUTHORIZED PERSON OR ENTITY NOR REPRODUCED, TRANSFERRED OR INCORPORATED IN ANY OTHER PROJECT IN ANY MANNER WITHOUT THE EXPRESS WRITTEN CONSENT OF SAMTEC, INC.

DO NOT SCALE DRAWING

SHEET SCALE: 1:1

samtec

520 PARK EAST BLVD, NEW ALBANY, IN 47150
PHONE: 812-944-6733 FAX: 812-948-5047
e-Mail info@SAMTEC.com code 55322

DESCRIPTION:
RECTANGULAR PANEL MOUNT CABLE USB
DWG. NO.

RPCU-X-XX.XX-XXX-XX

BY: T NEWTON 05/07/2010 SHEET 3 OF 11

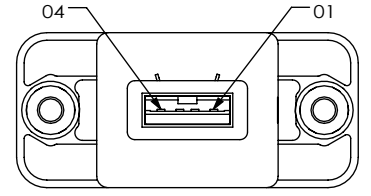
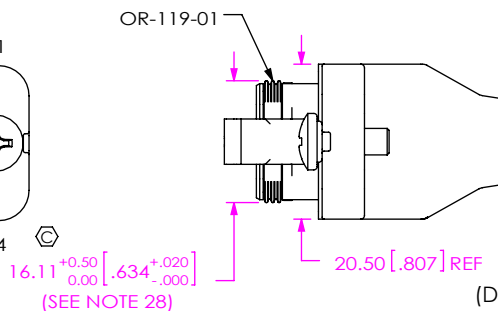
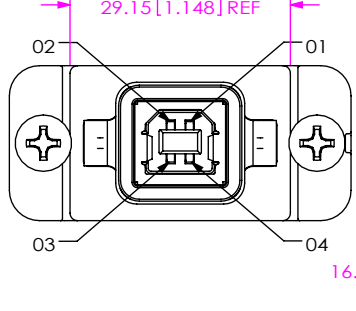
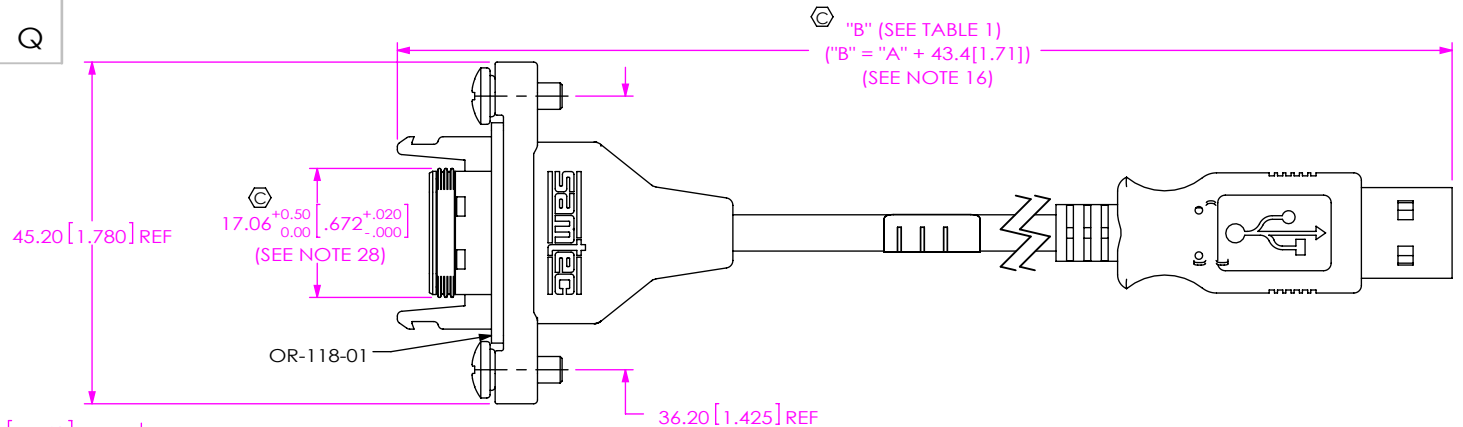


FIG 4
RPCU-X-XX.XX-BMS-AM SHOWN
(DIFFERENT AS SHOWN, OTHERWISE SAME AS FIG 1)

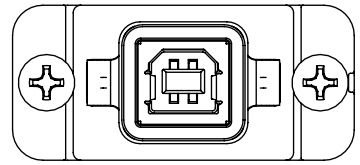
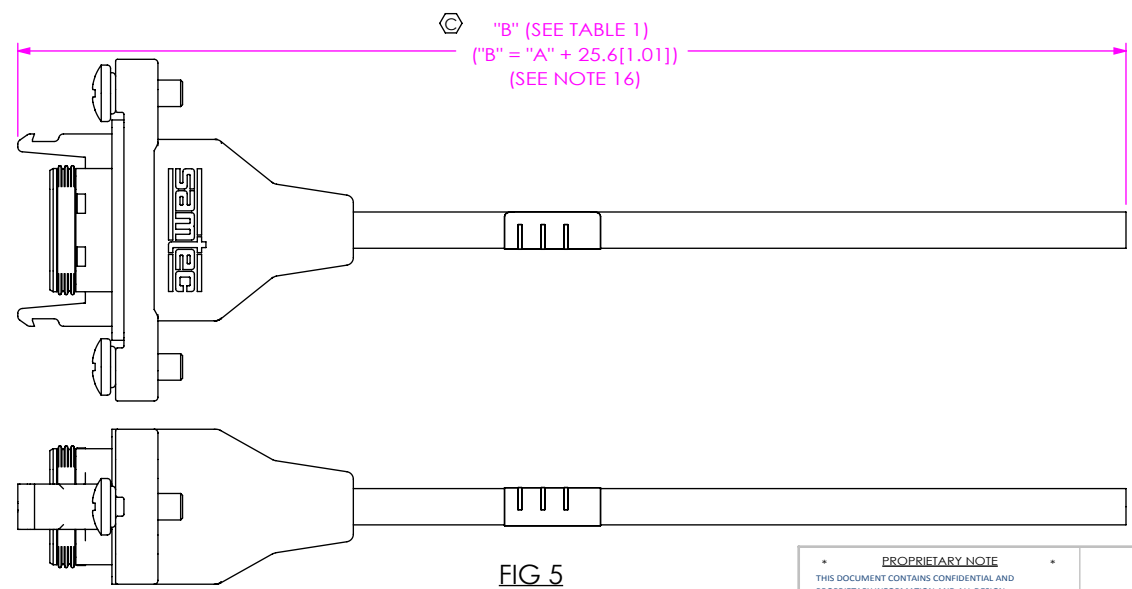


FIG 5
RPCU-X-XX.XX-BMS-BC SHOWN
(DIFFERENT AS SHOWN, OTHERWISE SAME AS FIG 4)

PROPRIETARY NOTE
THIS DOCUMENT CONTAINS CONFIDENTIAL AND PROPRIETARY INFORMATION AND ALL DESIGN, MANUFACTURING, REPRODUCTION, USE, PATENT RIGHTS AND SALES RIGHTS ARE EXPRESSLY RESERVED BY SAMTEC, INC. THIS DOCUMENT SHALL NOT BE DISCLOSED, IN WHOLE OR PART, TO ANY UNAUTHORIZED PERSON OR ENTITY NOR REPRODUCED, TRANSFERRED OR INCORPORATED IN ANY OTHER PROJECT IN ANY MANNER WITHOUT THE EXPRESS WRITTEN CONSENT OF SAMTEC, INC.

DO NOT SCALE DRAWING
SHEET SCALE: 1:1

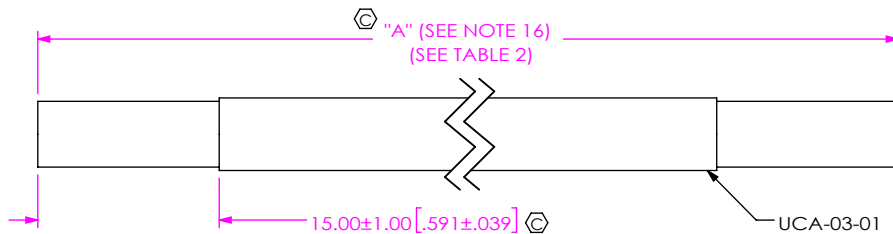


520 PARK EAST BLVD, NEW ALBANY, IN 47150
PHONE: 812-944-6733 FAX: 812-948-5047
e-Mail info@SAMTEC.com code 55322

DESCRIPTION:
RECTANGULAR PANEL MOUNT CABLE USB
DWG. NO. **RPCU-X-XX.XX-XXX-XX**

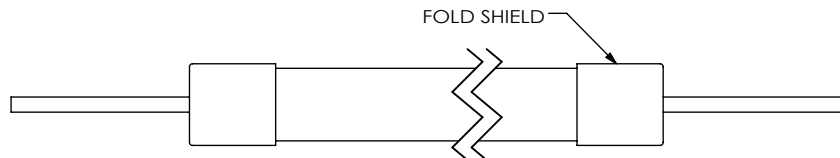
BY: T NEWTON 05/07/2010 SHEET 4 OF 11

IN-PROCESS 1
CUT CABLE TO LENGTH AND STRIP OUTER JACKET

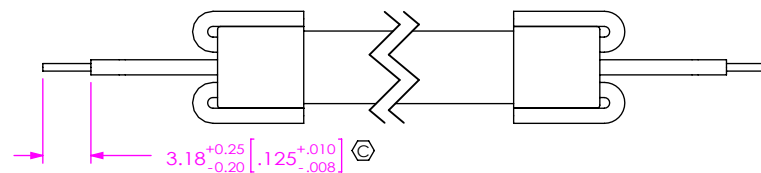


| END OPTION | "A" |
|------------|--|
| AMS | LENGTH IN MILLIMETERS |
| AM | LENGTH IN MILLIMETERS |
| BC | (LENGTH IN MILLIMETERS X 2) + 50.0[2.00] |
| BM | LENGTH IN MILLIMETERS |

IN-PROCESS 2
FOLD SHIELD BACK AND REMOVE FOIL



IN-PROCESS 3
STRIP INDIVIDUAL WIRES AND DIP IN TIN



-AMS-XX: IN-PROCESS 4
SOLDER CABLE TO PCB
(SEE TABLE 3)

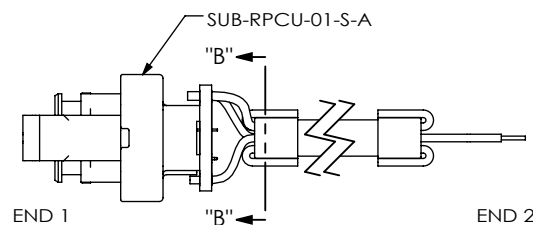
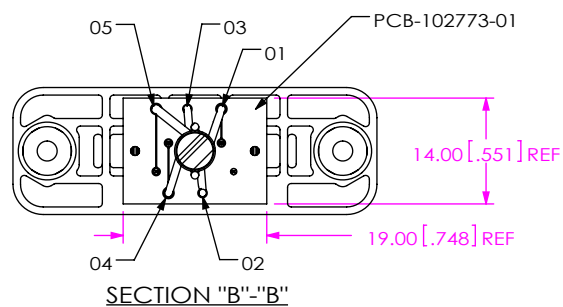
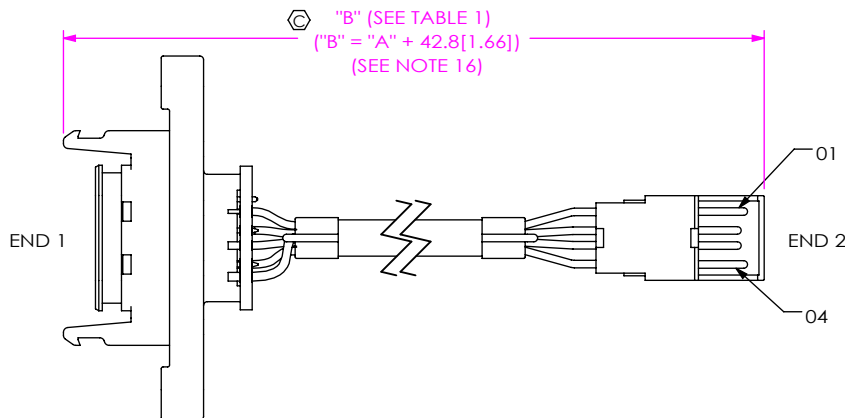
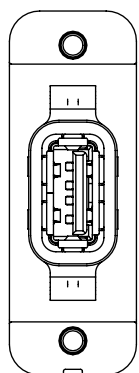


TABLE 3

| END 1 POS | WIRE COLOR | END 2 POS |
|-----------|------------|-----------|
| 01 | RED | 01 |
| 02 | WHITE | 02 |
| 03 | GREEN | 03 |
| 04 | BLACK | 04 |
| 05 | DRAIN WIRE | 05 |

-AMS-AM: IN-PROCESS 5
TERMINATE TO SUB-USB-A-G-B-01 AS SHOWN
(SEE TABLE 3 & NOTE 17)



PROPRIETARY NOTE
THIS DOCUMENT CONTAINS CONFIDENTIAL AND PROPRIETARY INFORMATION AND ALL DESIGN, MANUFACTURING, REPRODUCTION, USE, PATENT RIGHTS AND SALES RIGHTS ARE EXPRESSLY RESERVED BY SAMTEC, INC. THIS DOCUMENT SHALL NOT BE DISCLOSED, IN WHOLE OR PART, TO ANY UNAUTHORIZED PERSON OR ENTITY NOR REPRODUCED, TRANSFERRED OR INCORPORATED IN ANY OTHER PROJECT IN ANY MANNER WITHOUT THE EXPRESS WRITTEN CONSENT OF SAMTEC, INC.

DO NOT SCALE DRAWING

SHEET SCALE: 2:1



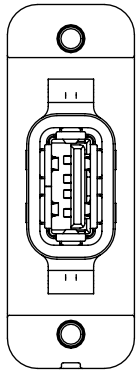
520 PARK EAST BLVD, NEW ALBANY, IN 47150
PHONE: 812-944-6733 FAX: 812-948-5047
e-Mail: info@SAMTEC.com code 53322

DESCRIPTION:
RECTANGULAR PANEL MOUNT CABLE USB
DWG. NO.

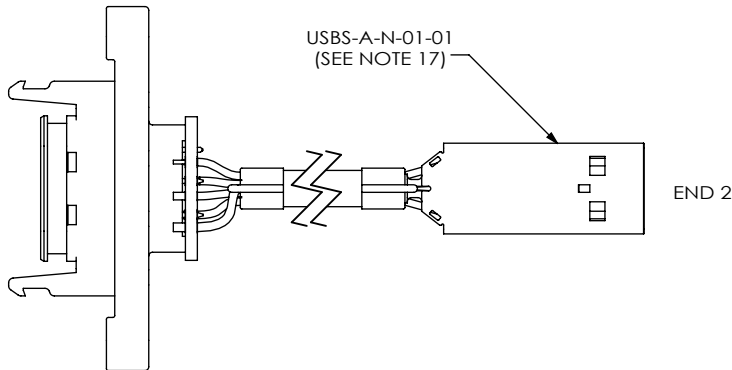
RPCU-X-XX.XX-XXX-XX

BY: T NEWTON 05/07/2010 SHEET 5 OF 11

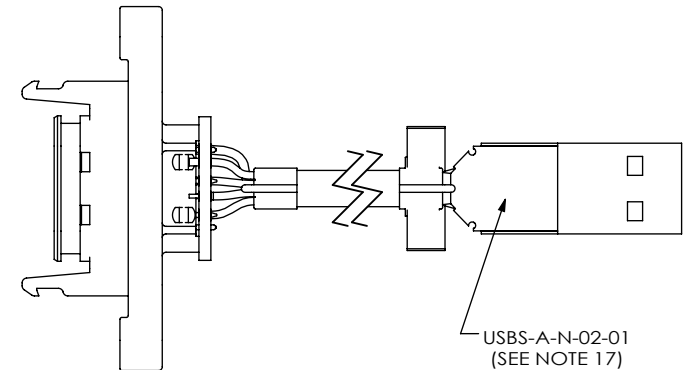
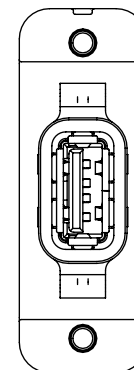
-AMS-AM: IN-PROCESS 6
 ADD USBS-A-N-01-01 SHELL
 (SEE NOTE 17)



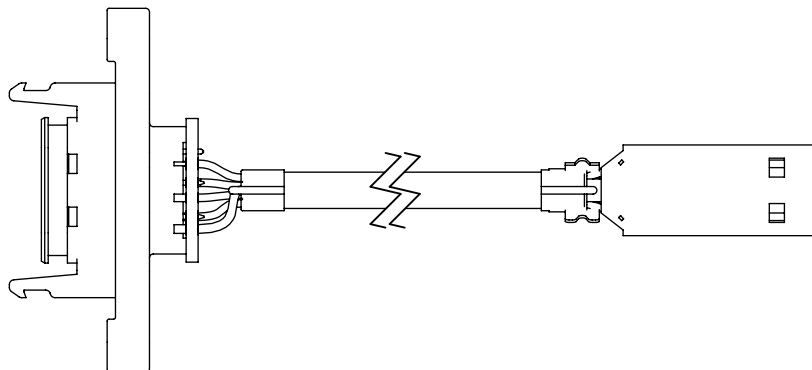
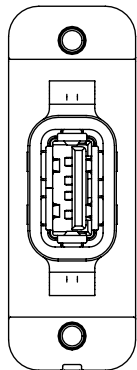
END 1



-AMS-AM: IN-PROCESS 7
 ADD USBS-A-N-02-01 SHELL
 (SEE NOTE 17)



-AMS-AM: IN-PROCESS 8
 CRIMP SHELLS OVER BRAID AND TRIM EXCESS SHIELD



PROPRIETARY NOTE

THIS DOCUMENT CONTAINS CONFIDENTIAL AND PROPRIETARY INFORMATION AND ALL DESIGN, MANUFACTURING, REPRODUCTION, USE, PATENT RIGHTS AND SALES RIGHTS ARE EXPRESSLY RESERVED BY SAMTEC, INC. THIS DOCUMENT SHALL NOT BE DISCLOSED, IN WHOLE OR PART, TO ANY UNAUTHORIZED PERSON OR ENTITY NOR REPRODUCED, TRANSFERRED OR INCORPORATED IN ANY OTHER PROJECT IN ANY MANNER WITHOUT THE EXPRESS WRITTEN CONSENT OF SAMTEC, INC.

DO NOT SCALE DRAWING

SHEET SCALE: 1:1



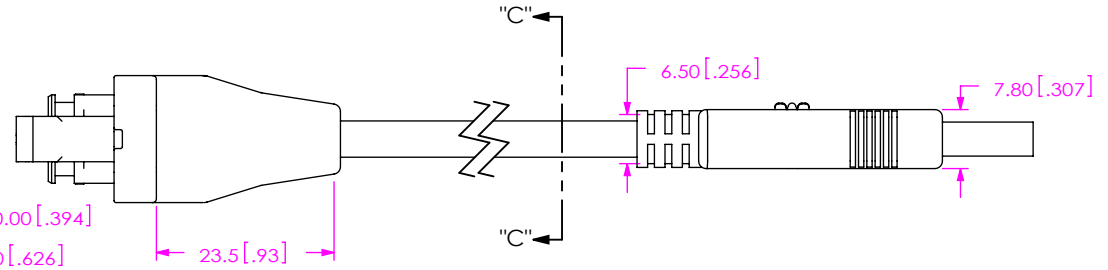
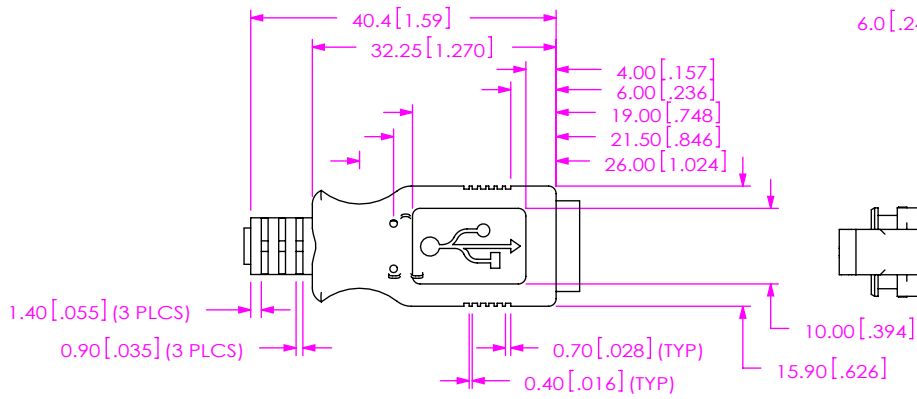
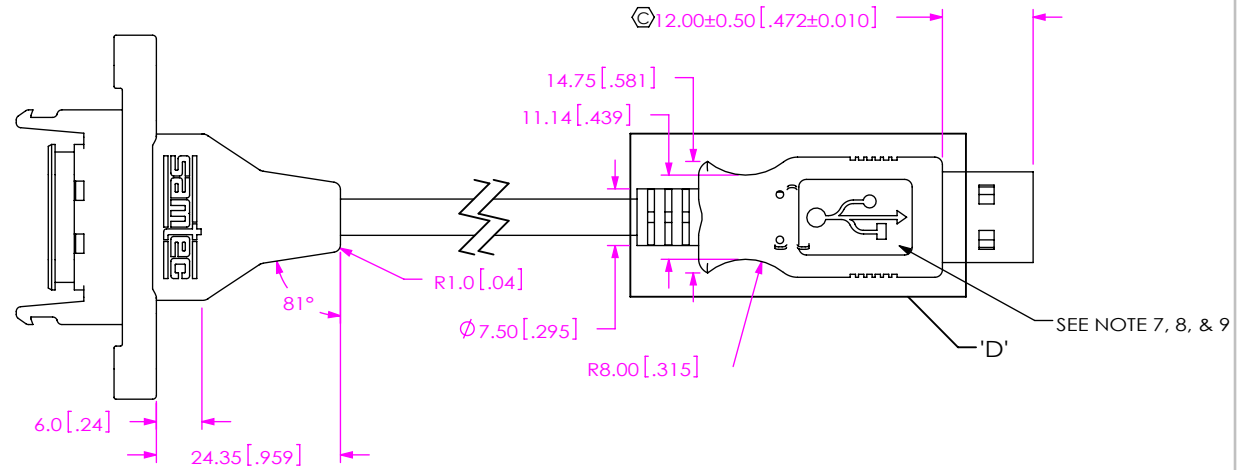
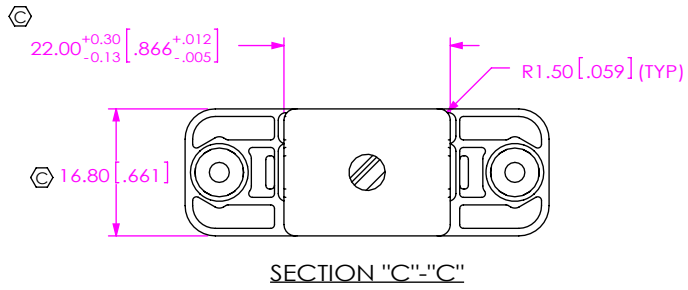
520 PARK EAST BLVD, NEW ALBANY, IN 47150
 PHONE: 812-944-6733 FAX: 812-948-5047
 e-Mail info@SAMTEC.com code 55322

DESCRIPTION:
 RECTANGULAR PANEL MOUNT CABLE USB

DWG. NO.
RPCU-X-XX.XX-XXX-XX

BY: T NEWTON 05/07/2010 SHEET 6 OF 11

-AMS-AM: IN-PROCESS 9
POSITION WIRES AND OVERMOLD



PROPRIETARY NOTE

THIS DOCUMENT CONTAINS CONFIDENTIAL AND PROPRIETARY INFORMATION AND ALL DESIGN, MANUFACTURING, REPRODUCTION, USE, PATENT RIGHTS AND SALES RIGHTS ARE EXPRESSLY RESERVED BY SAMTEC, INC. THIS DOCUMENT SHALL NOT BE DISCLOSED, IN WHOLE OR PART, TO ANY UNAUTHORIZED PERSON OR ENTITY NOR REPRODUCED, TRANSFERRED OR INCORPORATED IN ANY OTHER PROJECT IN ANY MANNER WITHOUT THE EXPRESS WRITTEN CONSENT OF SAMTEC, INC.

DO NOT SCALE DRAWING

SHEET SCALE: 1:1



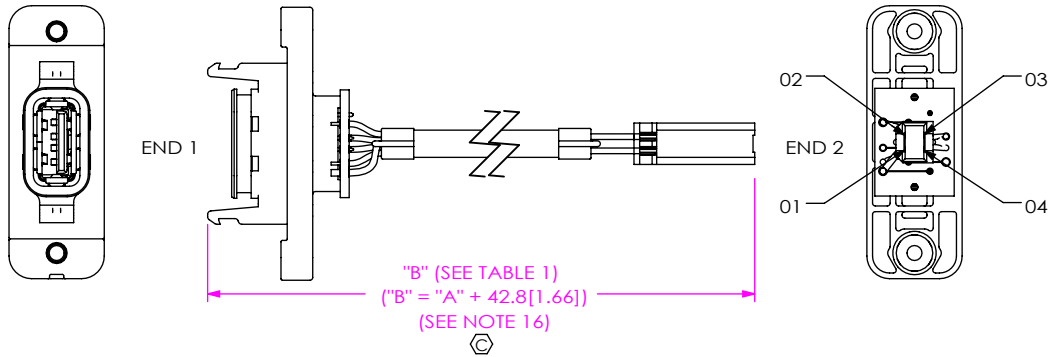
520 PARK EAST BLVD, NEW ALBANY, IN 47150
PHONE: 812-944-6733 FAX: 812-948-5047
e-Mail info@SAMTEC.com code 55322

DESCRIPTION:
RECTANGULAR PANEL MOUNT CABLE USB

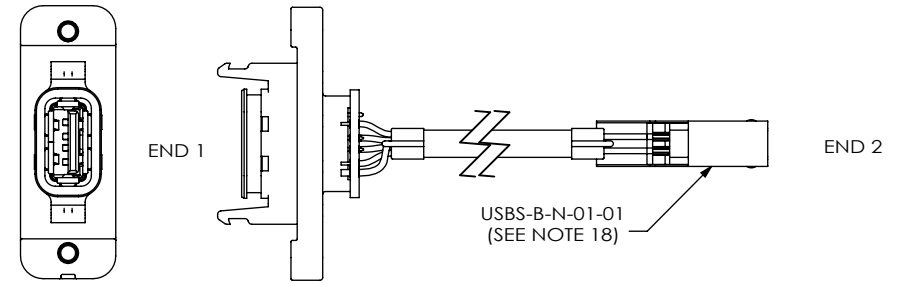
DWG. NO.
RPCU-X-XX.XX-XXX-XX

BY: T NEWTON 05/07/2010 SHEET 7 OF 11

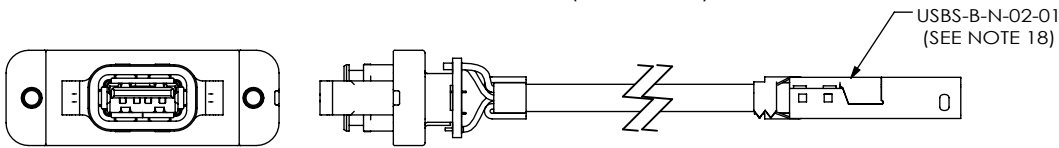
-AMS-BM: IN-PROCESS 5
 TERMINATE TO SUB-USB-B-G-B-01 AS SHOWN
 (SAME AS -AMS-AM: IN-PROCESS 5, EXCEPT AS SHOWN)
 (SEE TABLE 3 & NOTE 18)



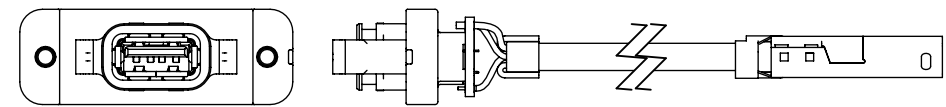
-AMS-BM: IN-PROCESS 6
 ADD USBS-B-N-01-01 SHELLS
 (SAME AS -AMS-AM: IN-PROCESS 6, EXCEPT AS SHOWN)
 (SEE NOTE 18)



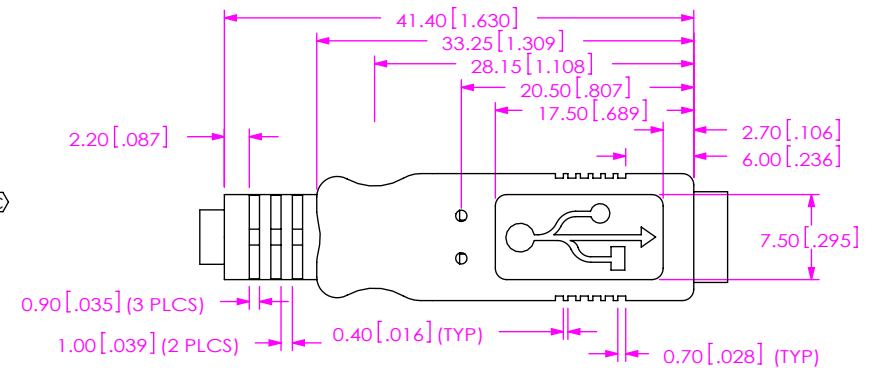
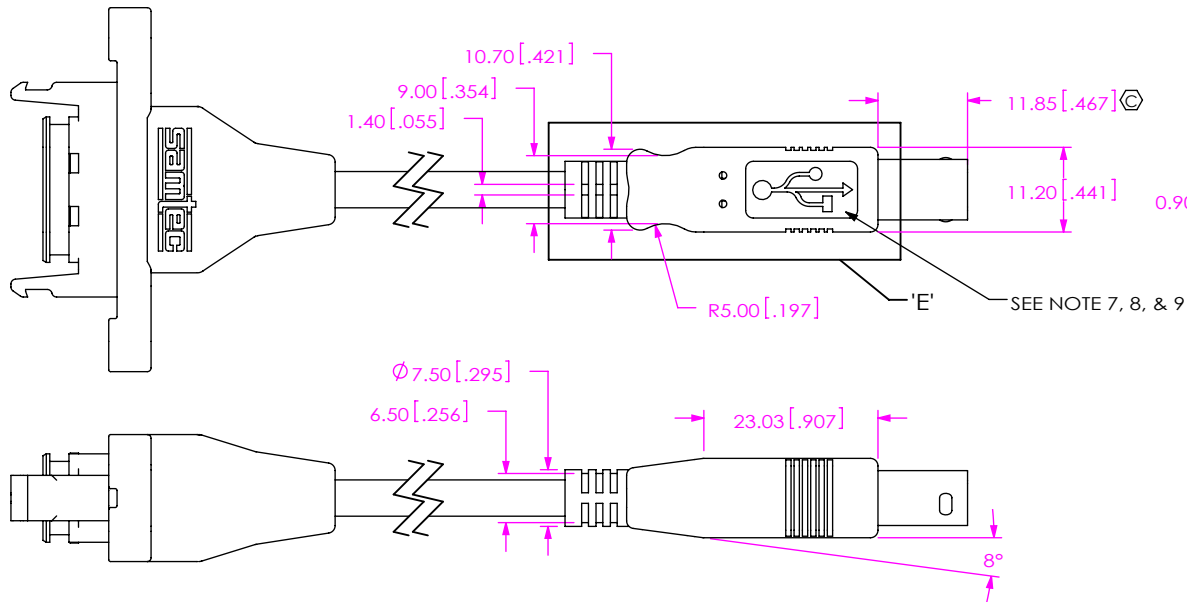
-AMS-BM: IN-PROCESS 7
 ADD USBS-B-N-02-01 SHELLS
 (SAME AS -AMS-AM: IN-PROCESS 7, EXCEPT AS SHOWN)
 (SEE NOTE 18)



-AMS-BM: IN-PROCESS 8
 CRIMP SHELLS OVER BRAID AND TRIM EXCESS SHIELD
 (SAME AS -AMS-AM: IN-PROCESS 8, EXCEPT AS SHOWN)



-AMS-BM: IN-PROCESS 9
 OVERMOLD
 (SAME AS -AMS-AM: IN-PROCESS 9, EXCEPT AS SHOWN)



DETAIL 'E'
 SCALE 1.5 : 1
 (SEE NOTE 21)

PROPRIETARY NOTE

THIS DOCUMENT CONTAINS CONFIDENTIAL AND PROPRIETARY INFORMATION AND ALL DESIGN, MANUFACTURING, REPRODUCTION, USE, PATENT RIGHTS AND SALES RIGHTS ARE EXPRESSLY RESERVED BY SAMTEC, INC. THIS DOCUMENT SHALL NOT BE DISCLOSED, IN WHOLE OR PART, TO ANY UNAUTHORIZED PERSON OR ENTITY NOR REPRODUCED, TRANSFERRED OR INCORPORATED IN ANY OTHER PROJECT IN ANY MANNER WITHOUT THE EXPRESS WRITTEN CONSENT OF SAMTEC, INC.

DO NOT SCALE DRAWING

SHEET SCALE: 1:1



520 PARK EAST BLVD, NEW ALBANY, IN 47150
 PHONE: 812-944-6733 FAX: 812-948-5047
 e-Mail info@SAMTEC.com code 55322

DESCRIPTION:
 RECTANGULAR PANEL MOUNT CABLE USB
 DWG. NO.

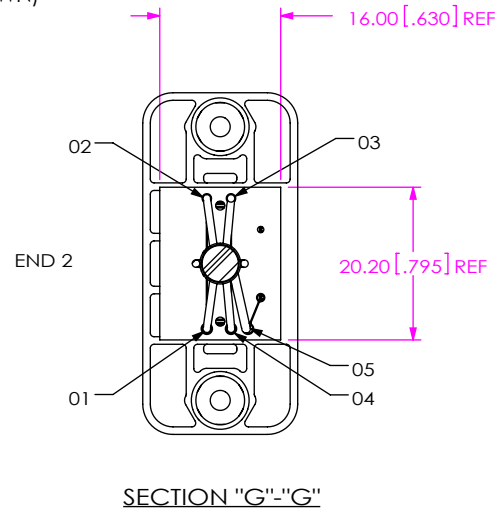
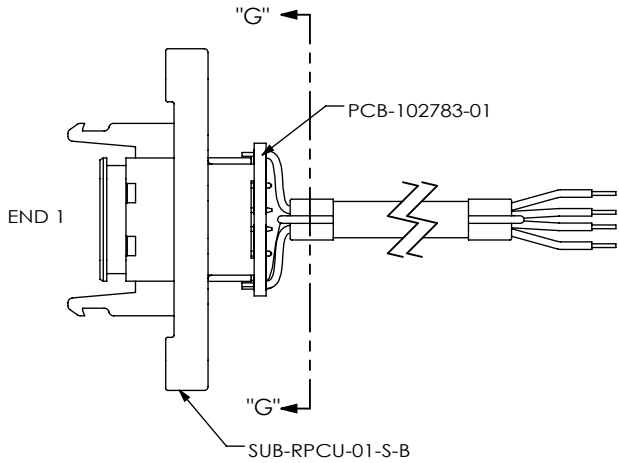
RPCU-X-XX.XX-XXX-XX

BY: T NEWTON 05/07/2010 SHEET 8 OF 11

REVISION Q

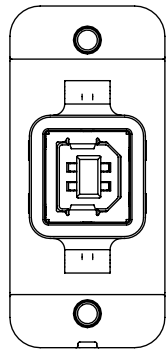
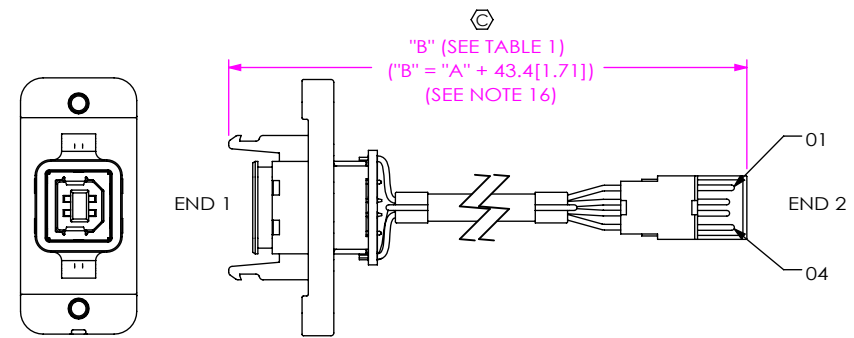
-BMS-XX: IN-PROCESS 4

SOLDER CABLE TO PCB
(SAME AS -AMS-XX: IN-PROCESS 4, EXCEPT AS SHOWN)
(SEE TABLE 3)



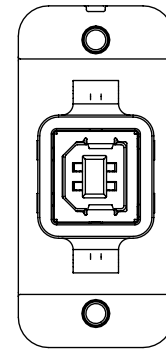
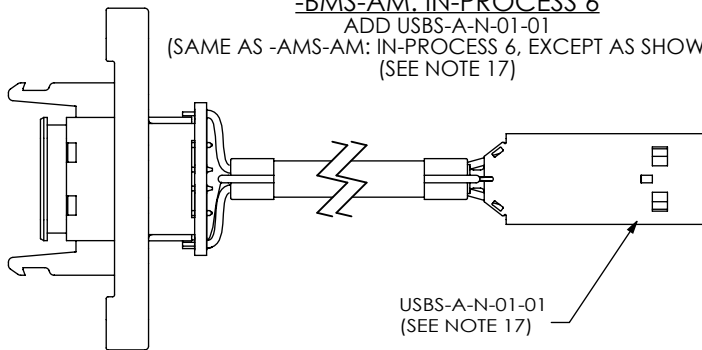
-BMS-AM: IN-PROCESS 5

TERMINATE TO SUB-USB-A-G-B-01 AS SHOWN
(SAME AS -AMS-AM: IN-PROCESS 5, EXCEPT AS SHOWN)
(SEE TABLE 3 & NOTE 17)



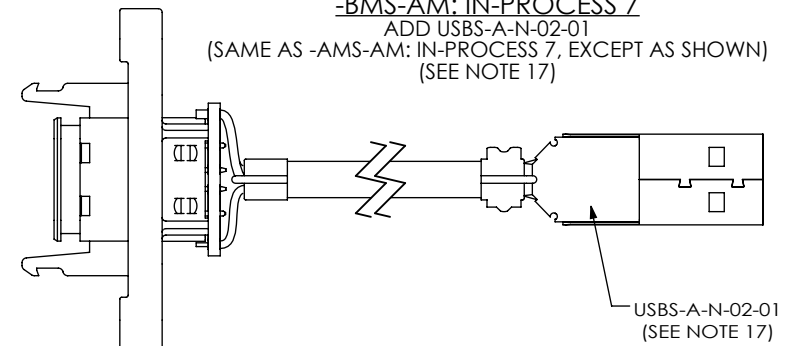
-BMS-AM: IN-PROCESS 6

ADD USBS-A-N-01-01
(SAME AS -AMS-AM: IN-PROCESS 6, EXCEPT AS SHOWN)
(SEE NOTE 17)



-BMS-AM: IN-PROCESS 7

ADD USBS-A-N-02-01
(SAME AS -AMS-AM: IN-PROCESS 7, EXCEPT AS SHOWN)
(SEE NOTE 17)



-BMS-AM: IN-PROCESS 8
CRIMP SHELLS OVER BRAID AND TRIM EXCESS SHIELD
(SAME AS -AMS-AM: IN-PROCESS 8, EXCEPT AS SHOWN)

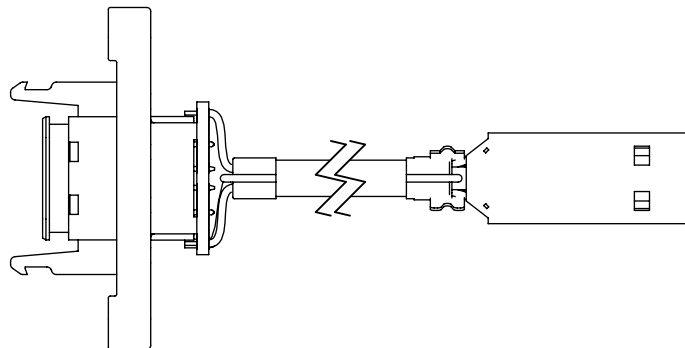


TABLE 3

| END 1 POS | WIRE COLOR | END 2 POS |
|-----------|------------|-----------|
| 01 | RED | 01 |
| 02 | WHITE | 02 |
| 03 | GREEN | 03 |
| 04 | BLACK | 04 |
| 05 | DRAIN WIRE | 05 |

PROPRIETARY NOTE

THIS DOCUMENT CONTAINS CONFIDENTIAL AND PROPRIETARY INFORMATION AND ALL DESIGN, MANUFACTURING, REPRODUCTION, USE, PATENT RIGHTS AND SALES RIGHTS ARE EXPRESSLY RESERVED BY SAMTEC, INC. THIS DOCUMENT SHALL NOT BE DISCLOSED, IN WHOLE OR PART, TO ANY UNAUTHORIZED PERSON OR ENTITY NOR REPRODUCED, TRANSFERRED OR INCORPORATED IN ANY OTHER PROJECT IN ANY MANNER WITHOUT THE EXPRESS WRITTEN CONSENT OF SAMTEC, INC.

DO NOT SCALE DRAWING

SHEET SCALE: 1:1



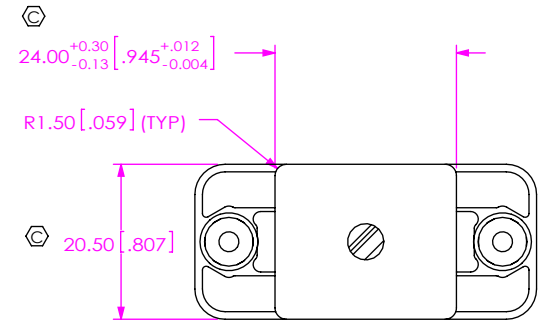
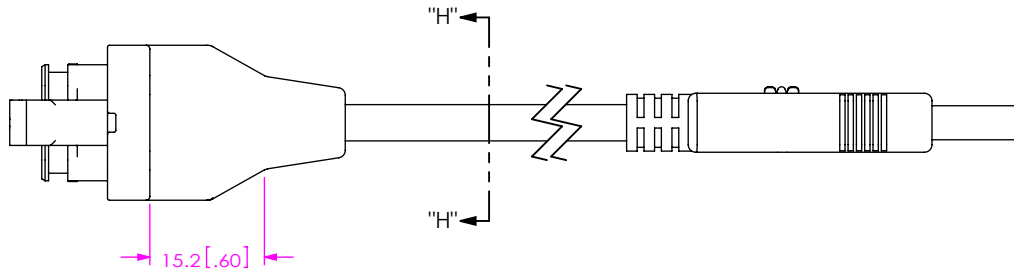
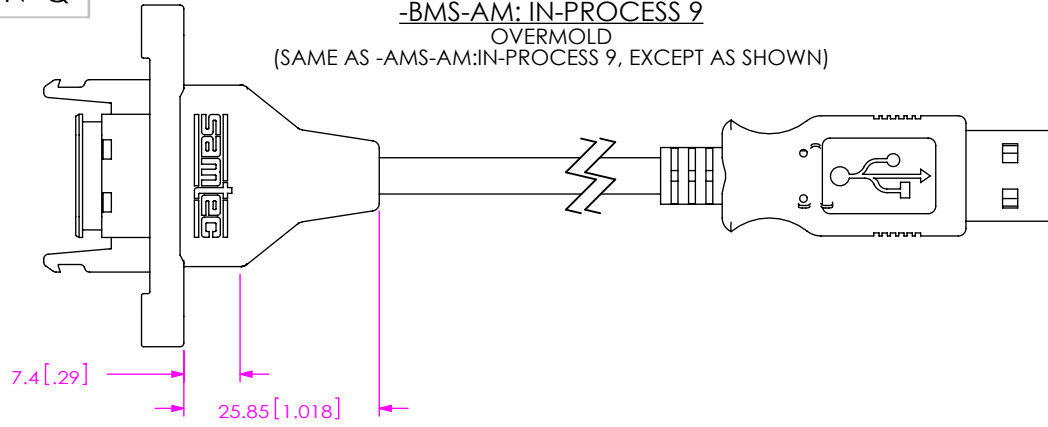
520 PARK EAST BLVD, NEW ALBANY, IN 47150
PHONE: 812-944-6733 FAX: 812-948-5047
e-Mail: info@SAMTEC.com code 55322

DESCRIPTION:
RECTANGULAR PANEL MOUNT CABLE USB

DWG. NO.
RPCU-X-XX.XX-XXX-XX

BY: T NEWTON 05/07/2010 SHEET 9 OF 11

-BMS-AM: IN-PROCESS 9
 OVERMOLD
 (SAME AS -AMS-AM:IN-PROCESS 9, EXCEPT AS SHOWN)



SECTION "H"-"H"

PROPRIETARY NOTE

THIS DOCUMENT CONTAINS CONFIDENTIAL AND PROPRIETARY INFORMATION AND ALL DESIGN, MANUFACTURING, REPRODUCTION, USE, PATENT RIGHTS AND SALES RIGHTS ARE EXPRESSLY RESERVED BY SAMTEC, INC. THIS DOCUMENT SHALL NOT BE DISCLOSED, IN WHOLE OR PART, TO ANY UNAUTHORIZED PERSON OR ENTITY NOR REPRODUCED, TRANSFERRED OR INCORPORATED IN ANY OTHER PROJECT IN ANY MANNER WITHOUT THE EXPRESS WRITTEN CONSENT OF SAMTEC, INC.

DO NOT SCALE DRAWING

SHEET SCALE: 1:1

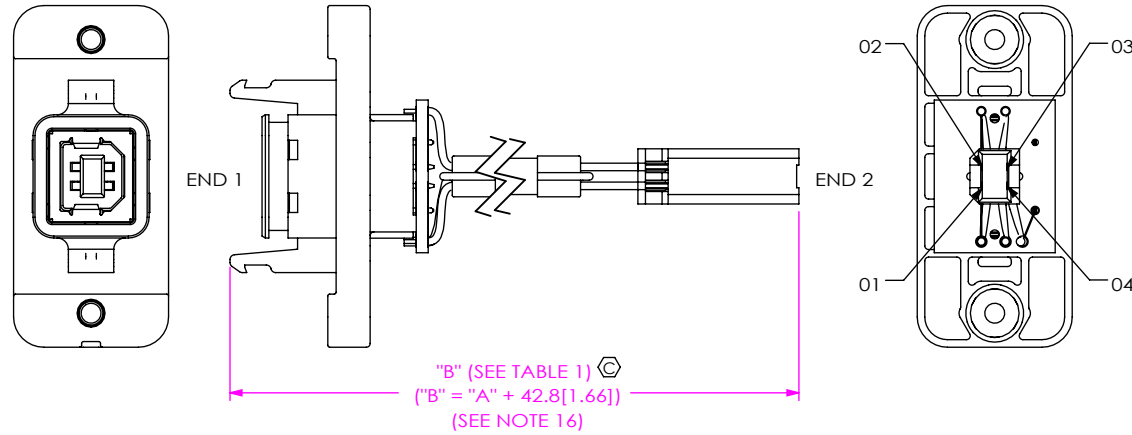


520 PARK EAST BLVD, NEW ALBANY, IN 47150
 PHONE: 812-944-6733 FAX: 812-948-5047
 e-Mail info@SAMTEC.com code 55322

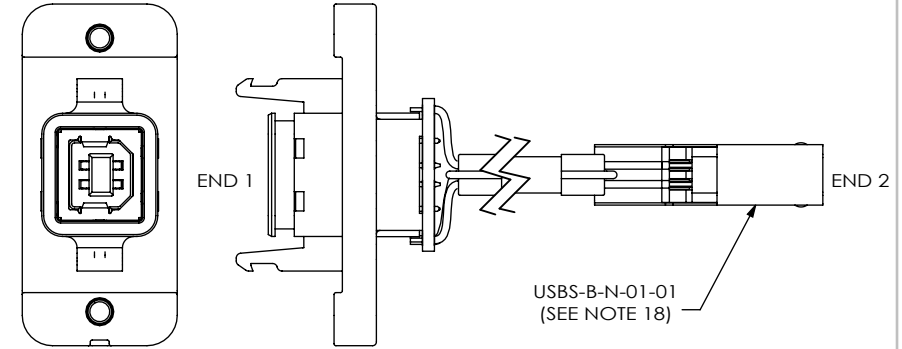
DESCRIPTION:
 RECTANGULAR PANEL MOUNT CABLE USB

DWG. NO.
RPCU-X-XX.XX-XXX-XX

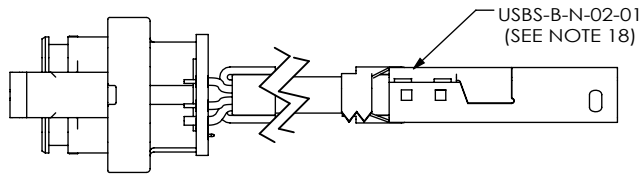
-BMS-BM: IN-PROCESS 5
 TERMINATE TO SUB-USB-B-G-B-01 AS SHOWN
 (SAME AS -AMS-BM: IN-PROCESS 5, EXCEPT AS SHOWN)
 (SEE TABLE 3 & NOTE 18)



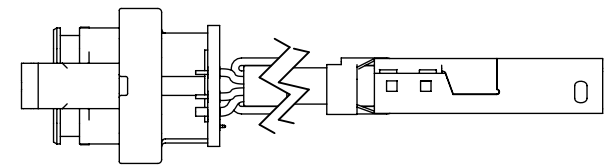
-BMS-BM: IN-PROCESS 6
 ADD USBS-B-N-01-01 SHELLS
 (SAME AS -AMS-BM: IN-PROCESS 6, EXCEPT AS SHOWN)
 (SEE NOTE 18)



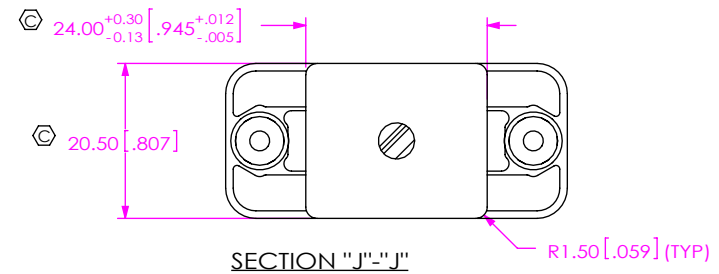
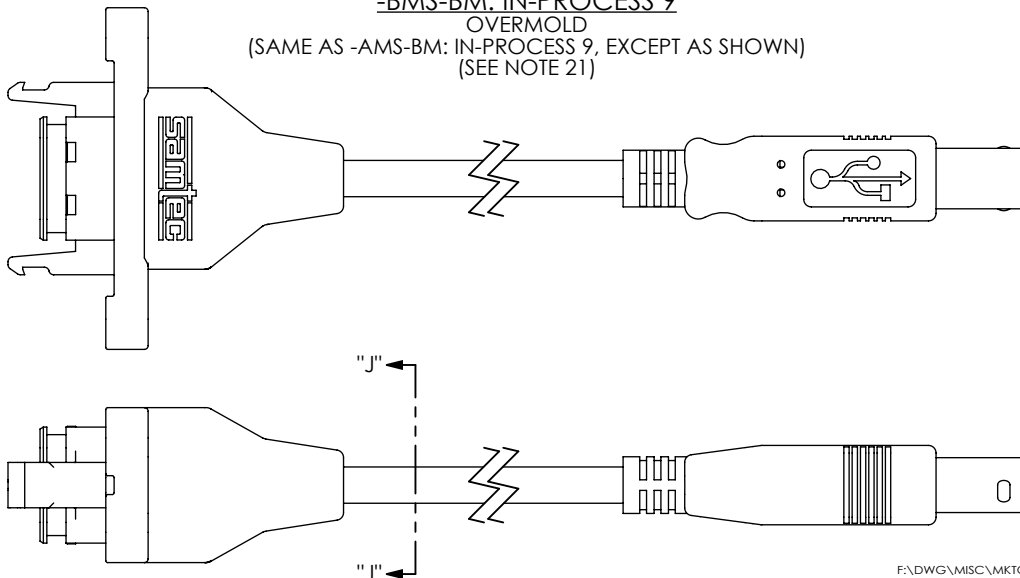
-BMS-BM: IN-PROCESS 7
 ADD USBS-B-N-02-01 SHELLS
 (SAME AS -AMS-BM: IN-PROCESS 7, EXCEPT AS SHOWN)



-BMS-BM: IN-PROCESS 8
 CRIMP SHELLS OVER BRAID AND TRIM EXCESS SHIELD
 (SAME AS -AMS-BM: IN-PROCESS 8, EXCEPT AS SHOWN)



-BMS-BM: IN-PROCESS 9
 OVERMOLD
 (SAME AS -AMS-BM: IN-PROCESS 9, EXCEPT AS SHOWN)
 (SEE NOTE 21)



PROPRIETARY NOTE
 THIS DOCUMENT CONTAINS CONFIDENTIAL AND PROPRIETARY INFORMATION AND ALL DESIGN, MANUFACTURING, REPRODUCTION, USE, PATENT RIGHTS AND SALES RIGHTS ARE EXPRESSLY RESERVED BY SAMTEC, INC. THIS DOCUMENT SHALL NOT BE DISCLOSED, IN WHOLE OR PART, TO ANY UNAUTHORIZED PERSON OR ENTITY NOR REPRODUCED, TRANSFERRED OR INCORPORATED IN ANY OTHER PROJECT IN ANY MANNER WITHOUT THE EXPRESS WRITTEN CONSENT OF SAMTEC, INC.

DO NOT SCALE DRAWING

SHEET SCALE: 1:1

samtec

520 PARK EAST BLVD, NEW ALBANY, IN 47150
 PHONE: 812-944-6733 FAX: 812-948-5047
 e-Mail info@SAMTEC.com code 55322

DESCRIPTION:
 RECTANGULAR PANEL MOUNT CABLE USB
 DWG. NO. **RPCU-X-XX.XX-XXX-XX**

BY: T NEWTON 05/07/2010 SHEET 11 OF 11