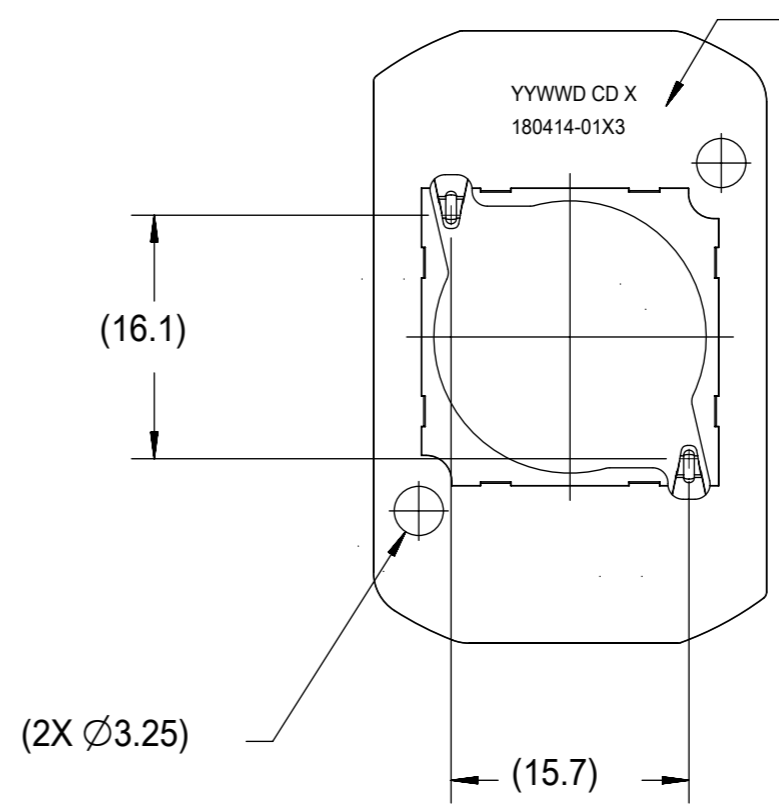
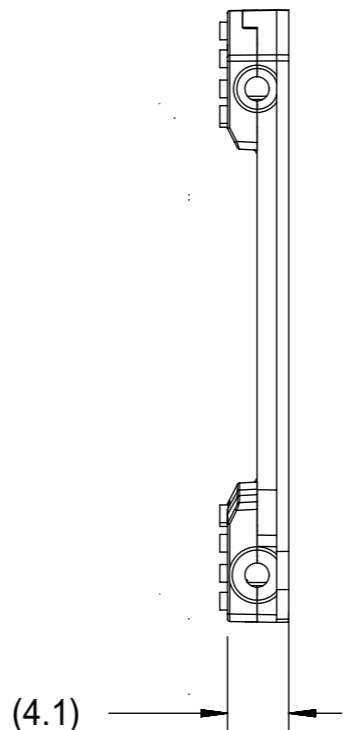
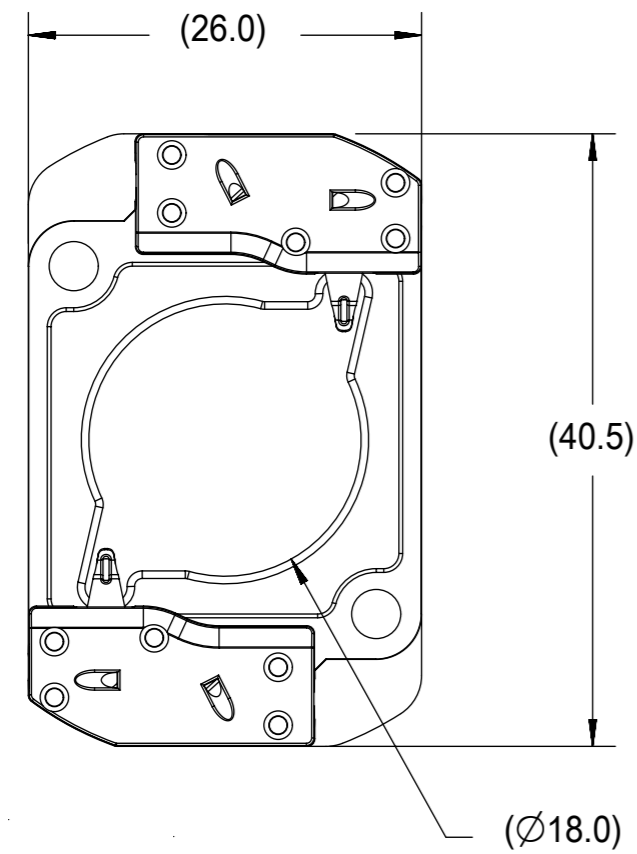
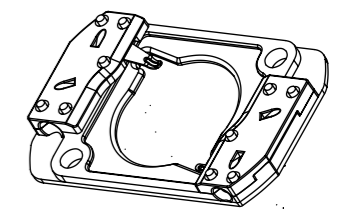


PART NUMBER	DESCRIPTION	MATERIAL	AGENCY APPROVAL
180414-0103	COB LED HOLDER 19.0MM X 19.0MM SQUARE	POLYAMIDE (PA66) GLASS FILLED, COLOR: NATURAL	UL496 FILE E345583
180414-0113	COB LED HOLDER 19.0MM X 19.0MM SQUARE	POLYESTER (PBT) GLASS FILLED, COLOR: WHITE	UL496 FILE E345583
180414-0203	COB LED HOLDER 19.0MM X 19.0MM SQUARE WITH TAB CAP	POLYAMIDE (PA66) GLASS FILLED, COLOR: NATURAL	UL496 FILE E345583
180414-0213	COB LED HOLDER 19.0MM X 19.0MM SQUARE WITH TAB CAP	POLYESTER (PBT) GLASS FILLED, COLOR: WHITE	UL496 FILE E345583

HOLDER ASSEMBLY
P/N 180414-0103
P/N 180414-0113



PART MARKED WITH
DATE CODE (YYWW)
MFG PLANT (CD)
REVISION (X)
PART NUMBER (180414-01X3)



ISOMETRIC VIEW 1
SCALE 1:1

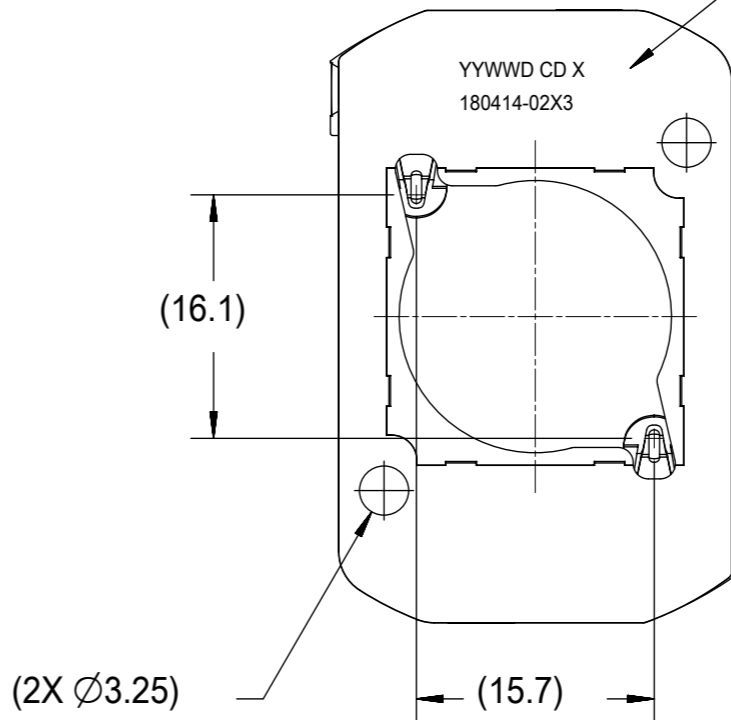
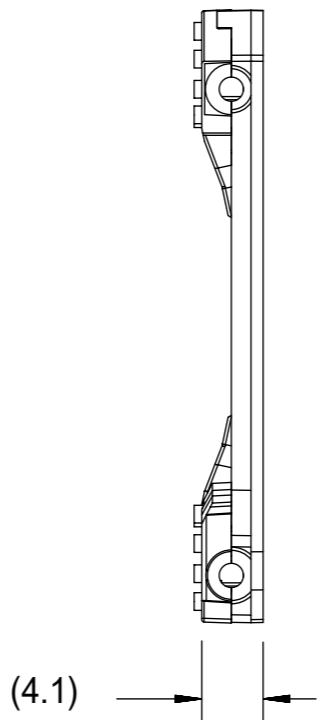
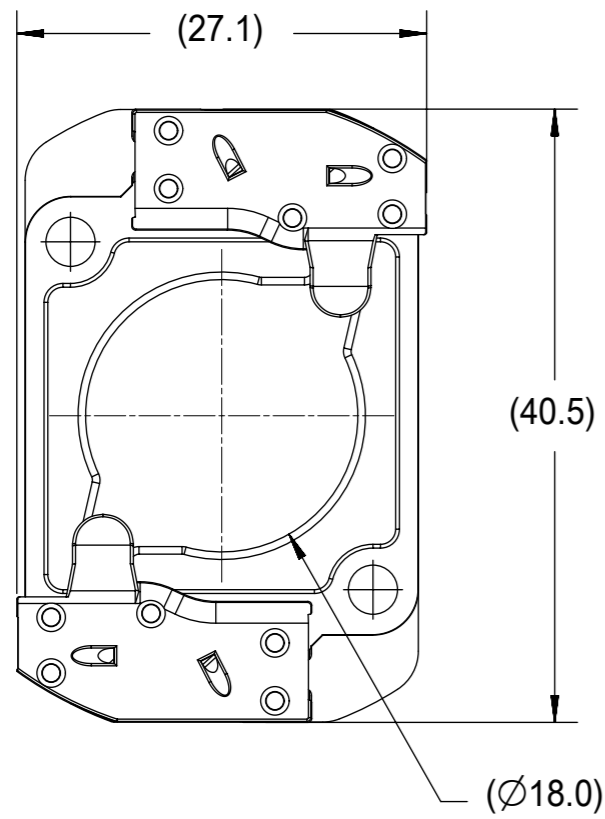
- NOTES:
- MATERIALS: HOUSING: SEE CHART; TERMINAL: COPPER ALLOY
 - FINISHES: TERMINAL: NICKEL (Ni) UNDERPLATE 1.27 µm, SELECT TIN (Sn) 2.54µm, SELECT GOLD (Au) 0.76µm
 - PRODUCT SPECIFICATION: PS-180414-001
 - PACKAGING SPECIFICATION: PK-180419-006
 - APPLICATION SPECIFICATION: AS-180412-001
 - SEE SHEET 3 FOR APPLICATION NOTES
 - ELV AND ROHS COMPLIANT
 - ALL DIMENSIONS IN PARENTHESIS (XX.XX) ARE FOR REFERENCE ONLY.

SYMBOLS	THIS DRAWING CONTAINS INFORMATION THAT IS PROPRIETARY TO MOLEX ELECTRONIC TECHNOLOGIES, LLC AND SHOULD NOT BE USED WITHOUT WRITTEN PERMISSION		CURRENT REV DESC:			molex		
	DIMENSION UNITS	SCALE						
▽ = 0	mm	1:1	DRWN: BPISZCZOR	2018/08/30	CHK'D: BPISZCZOR	2018/08/30	PRODUCT CUSTOMER DRAWING	
▽ = 0	GENERAL TOLERANCES (UNLESS SPECIFIED)		APPR: BPISZCZOR	2018/08/30	INITIAL REVISION:			
▽ = 0	ANGULAR TOL ± 0.5°		DRWN: MCOLE			2012/05/24	DOCUMENT NUMBER	
▽ = 0	4 PLACES ±		APPR: DMCGOWAN			2012/08/06	SD-180414-103	
▽ = 0	3 PLACES ±		THIRD ANGLE PROJECTION			DRAWING	DOC TYPE	
▽ = 0	2 PLACES ± 0.13		A3-SIZE			SERIES	DOC PART	
▽ = 0	1 PLACE ± 0.25		180414			MATERIAL NUMBER	REVISION	
▽ = 0	0 PLACES ±		GENERAL MARKET			CUSTOMER	B4	
□ = 0	DRAFT WHERE APPLICABLE MUST REMAIN WITHIN DIMENSIONS		SHEET NUMBER			1 OF 4		

HOLDER ASSEMBLY WITH TAB CAP

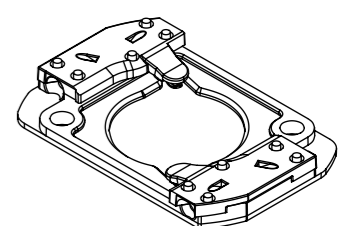
P/N 180414-0203

P/N 180414-0213



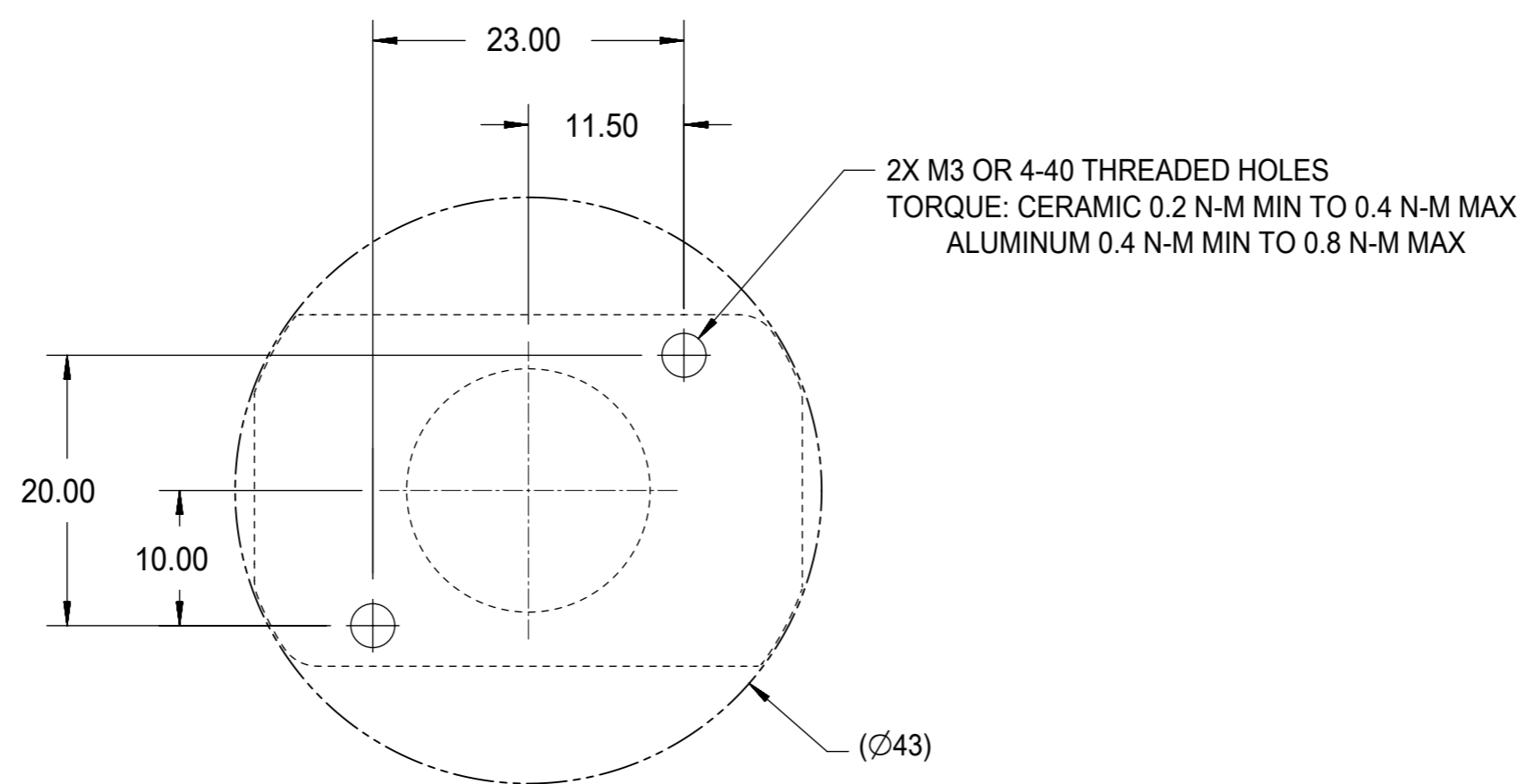
PART MARKED WITH
DATE CODE (YYWWD)
MFG PLANT (CD)
REVISION (X)
PART NUMBER (180414-02X3)

YYWWD CD X
180414-02X3



ISOMETRIC VIEW 2
SCALE 1:1

SYMBOLS ▽ = 0 ▽ = 0 ▽ = 0 ▽ = 0 ▽ = 0 ▽ = 0 ▽ = 0 ▽ = 0 ▽ = 0 ▽ = 0 ▽ = 0	THIS DRAWING CONTAINS INFORMATION THAT IS PROPRIETARY TO MOLEX ELECTRONIC TECHNOLOGIES, LLC AND SHOULD NOT BE USED WITHOUT WRITTEN PERMISSION DIMENSION UNITS: mm SCALE: 1:1	CURRENT REV DESC: EC NO: 603651 DRWN: SCHEN76 2018/08/22 CHK'D: BPISZCZOR 2018/08/30 APPR: BPISZCZOR 2018/08/30	molex COB LED HOLDER 19.0 MM X 19.0 MM SQUARE		
	GENERAL TOLERANCES (UNLESS SPECIFIED) ANGULAR TOL ± 0.5° 4 PLACES ± 3 PLACES ± 2 PLACES ± 0.13 1 PLACE ± 0.25 0 PLACES ±	INITIAL REVISION: DRWN: MCOLE 2012/05/24 APPR: DMCGOWAN 2012/08/06			
	DRAFT WHERE APPLICABLE MUST REMAIN WITHIN DIMENSIONS THIRD ANGLE PROJECTION DRAWING: A3-SIZE SERIES: 180414	DOCUMENT NUMBER: SD-180414-103 DOC TYPE: PSD DOC PART: 001 REVISION: B4	MATERIAL NUMBER: GENERAL MARKET SHEET NUMBER: 2 OF 4		

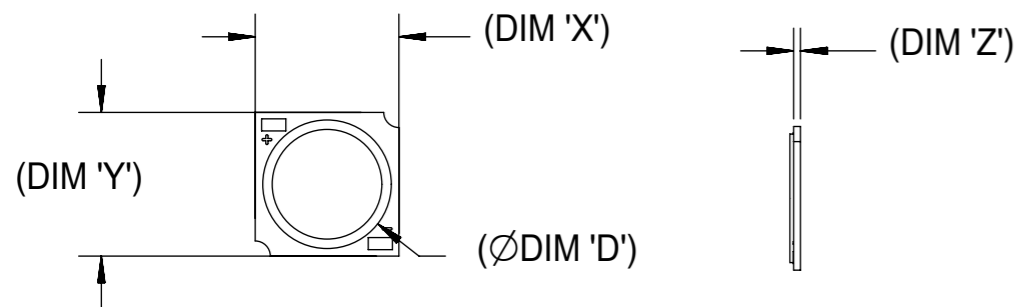


RECOMMENDED MOUNTING DIMENSIONIS

NOTES:
 1. WIRE GAUGE: 18, 20, OR 22 AWG, SOLID OR STRANDED WITH TIN OVERCOAT. STRIP LENGTH 10MM +2.0/-0.0MM.
 RECOMMENDED MAXIMUM DIAMETER AFTER TINNING: 1.40MM.
 LARGER DIAMETER WIRES ARE ACCEPTABLE IF FULLY INSERTABLE IN WIRE TRAP AND NO WITHDRAWAL WITHIN 20N FORCE.

THIS DRAWING CONTAINS INFORMATION THAT IS PROPRIETARY TO MOLEX ELECTRONIC TECHNOLOGIES, LLC AND SHOULD NOT BE USED WITHOUT WRITTEN PERMISSION										
SYMBOLS	DIMENSION UNITS	SCALE	CURRENT REV DESC:							
	mm	1:1	EC NO: 603651 DRWN: SCHEN76 2018/08/22 CHK'D: BPISZCZOR 2018/08/30 APPR: BPISZCZOR 2018/08/30							
GENERAL TOLERANCES (UNLESS SPECIFIED)			COB LED HOLDER 19.0 MM X 19.0 MM SQUARE							
ANGULAR TOL ± 0.5°			PRODUCT CUSTOMER DRAWING							
▽ = 0	4 PLACES	±	INITIAL REVISION:							
▽ = 0	3 PLACES	±	DRWN: MCOLE 2012/05/24							
▽ = 0	2 PLACES	± 0.13	APPR: DMCGOWAN 2012/08/06							
▽ = 0	1 PLACE	± 0.25	DOCUMENT NUMBER							
▽ = 0	0 PLACES	±	SD-180414-103							
□ = 0	DRAFT WHERE APPLICABLE MUST REMAIN WITHIN DIMENSIONS		THIRD ANGLE PROJECTION	DRAWING	SERIES	MATERIAL NUMBER	CUSTOMER	DOC TYPE	DOC PART	REVISION
▽ = 0				A3-SIZE	180414		GENERAL MARKET	PSD	001	B4
								SHEET NUMBER		
								3 OF 4		

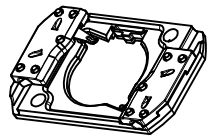
COB MFG	TYPE	DIM 'X'	DIM 'Y'	DIM 'Z'	DIM 'D'
CITIZEN	CLL030, CLL032, CLU034, CLU036, CLU038	19.0	19.0	0.90	17.0
TRIDONIC	SLE G5 LES15	19.0	19.0	0.90	15.0
SEOUL	ZC12, ZC18	19.0	19.0	0.90	16.0
CITIZEN	CLU720, CLU721	19.0	19.0	0.90	13.5
EVERLIGHT	EAHP1919WA*, EAHP1919WB*, EAHP1919WC*	19.0	19.0	0.90	15.5
EVERLIGHT	EA1919 36V/16W	19.0	19.0	0.90	15.5
EVERLIGHT	EA1919 36V/19W	19.0	19.0	0.90	15.5
EVERLIGHT	EA1919 36V/26W	19.0	19.0	0.90	15.5
VOSSLOH-SCHWABE	DMC114C	19.0	19.0	1.00	11.9
VOSSLOH-SCHWABE	DMC124***F, DMC125***F	19.0	19.0	1.00	13.1
VOSSLOH-SCHWABE	DMC125C	19.0	19.0	1.00	13.1
VOSSLOH-SCHWABE	DMC128***F	19.0	19.0	1.00	15.8
BRIDGELUX	H15	19.0	19.0	1.10	16.5
BRIDGELUX	GEN. 7 V13	19.0	19.0	1.00	15.0



COB LED
SCALE 1:1

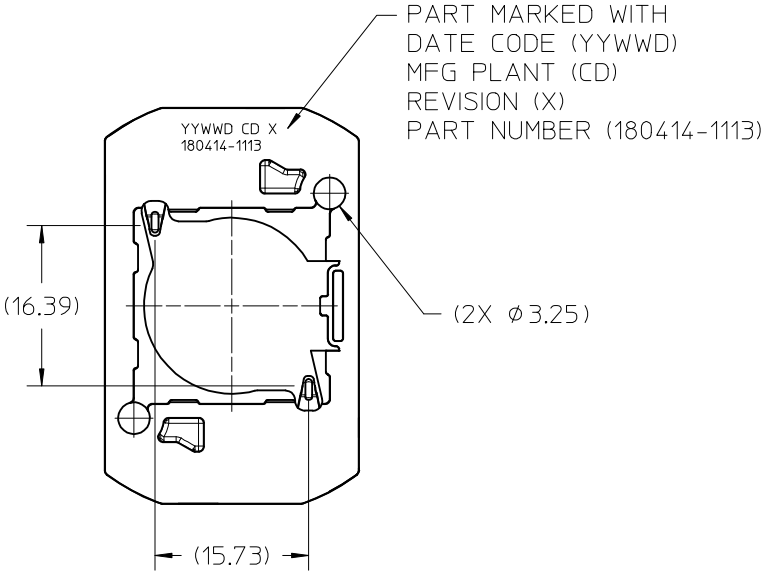
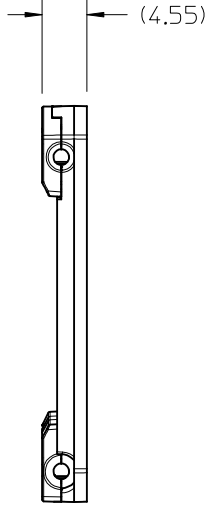
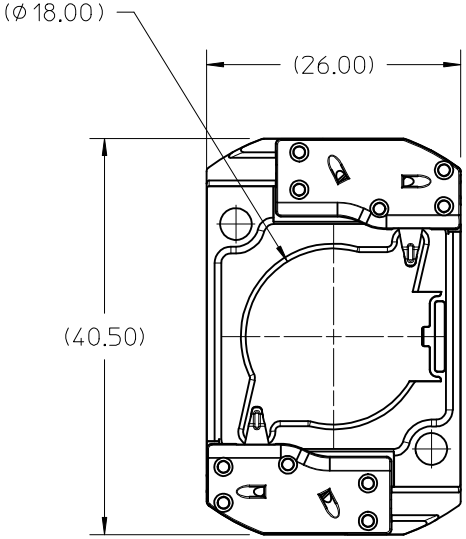
SYMBOLS	THIS DRAWING CONTAINS INFORMATION THAT IS PROPRIETARY TO MOLEX ELECTRONIC TECHNOLOGIES, LLC AND SHOULD NOT BE USED WITHOUT WRITTEN PERMISSION		CURRENT REV DESC:		molex
	DIMENSION UNITS	SCALE			
▽ = 0	mm	1:1			COB LED HOLDER 19.0 MM X 19.0 MM SQUARE
▽ = 0	GENERAL TOLERANCES (UNLESS SPECIFIED)				
▽ = 0	ANGULAR TOL ± 0.5°				PRODUCT CUSTOMER DRAWING
▽ = 0	4 PLACES	±			
▽ = 0	3 PLACES	±			DOCUMENT NUMBER SD-180414-103
▽ = 0	2 PLACES	± 0.13			
▽ = 0	1 PLACE	± 0.25			DOC TYPE PSD
▽ = 0	0 PLACES	±			
□ = 0	DRAFT WHERE APPLICABLE MUST REMAIN WITHIN DIMENSIONS		THIRD ANGLE PROJECTION	DRAWING	SERIES
▽ = 0				A3-SIZE	180414
			MATERIAL NUMBER	CUSTOMER	REVISION
				GENERAL MARKET	001 B4
			SHEET NUMBER		4 OF 4

10	9	8	7	6	5	4	3	2	1
PART NUMBER	DESCRIPTION		POCKET DEPTH	HOUSING	TERMINAL	CAP			
180414-1113	COB LED HOLDER ASSEMBLY		0.90	180413-1113	180155-0133	180154-0105			
180414-2113	COB LED HOLDER ASSEMBLY		0.75	180413-2113	180155-0133	180154-0105			



ISO VIEW 1
SCALE 1:1

P/N 180414-1113 HOLDER ASSEMBLY
(0.90 POCKET DEPTH)



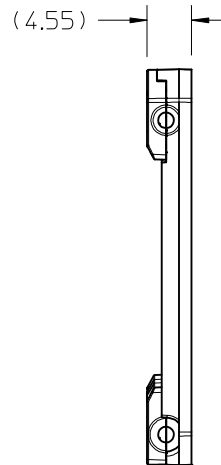
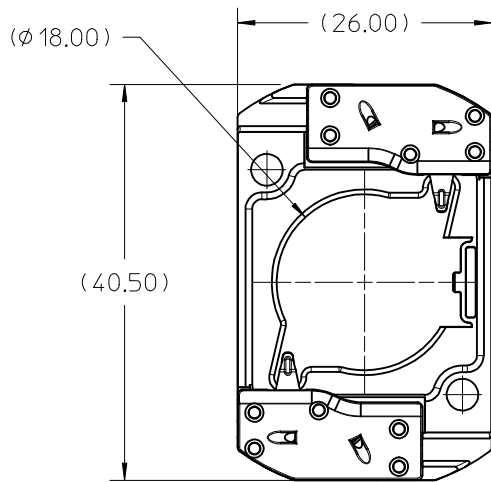
PART MARKED WITH
DATE CODE (YYWWD)
MFG PLANT (CD)
REVISION (X)
PART NUMBER (180414-1113)

- NOTES:
1. MATERIALS: HOUSING AND CAPS: POLYESTER PBT GLASS FILLED; COLOR: WHITE; TERMINAL: COPPER ALLOY
 2. FINISHES: TERMINAL CONTACT: SELECT GOLD OVER NICKEL WIRE TRAP: SELECT TIN OVER NICKEL
 3. PRODUCT SPECIFICATION: 180414-0000-PS
 4. PACKAGING SPECIFICATION: PK-180419-006
 5. UL:OLFB2 UL496 FILE NO. E345583
 6. ELV AND ROHS COMPLIANT
 7. FOR USE WITH: 19.0 MM X 19.0 MM COB LED
 8. WIRE GAUGE: 18, 20, AND 22 AWG, SOLID OR STRANDED WITH TIN OVERCOAT. STRIP LENGTH 10MM +2.0/-0.0MM.
 9. ALL DIMENSIONS IN PARENTHESES (XX.XX) ARE FOR REFERENCE ONLY

ENTER DESCRIPTION EC NO: SSL2017-0024 DRWN: L ZAB, JANOVSKI 2017/02/21 CHKD: APPR: BPT/SZCZOR 2017/03/07 B4	DESCRIPTION REV	QUALITY SYMBOLS $\nabla F=0$ $\nabla F=0$ $\nabla F=0$	GENERAL TOLERANCES (UNLESS SPECIFIED) <table border="1"> <tr> <th></th> <th>mm</th> <th>INCH</th> </tr> <tr> <td>4 PLACES</td> <td>± ---</td> <td>± ---</td> </tr> <tr> <td>3 PLACES</td> <td>± ---</td> <td>± ---</td> </tr> <tr> <td>2 PLACES</td> <td>± 0.13</td> <td>± ---</td> </tr> <tr> <td>1 PLACE</td> <td>± 0.25</td> <td>± ---</td> </tr> <tr> <td>0 PLACE</td> <td>± ---</td> <td>± ---</td> </tr> </table>		mm	INCH	4 PLACES	± ---	± ---	3 PLACES	± ---	± ---	2 PLACES	± 0.13	± ---	1 PLACE	± 0.25	± ---	0 PLACE	± ---	± ---	DIMENSION STYLE MM ONLY	SCALE 2:1	DESIGN UNITS METRIC	THIRD ANGLE PROJECTION
			mm	INCH																					
		4 PLACES	± ---	± ---																					
		3 PLACES	± ---	± ---																					
2 PLACES	± 0.13	± ---																							
1 PLACE	± 0.25	± ---																							
0 PLACE	± ---	± ---																							
DRAFT WHERE APPLICABLE MUST REMAIN WITHIN DIMENSIONS			DRAWN BY: MCOLE DATE: 2013/12/09	CHECKED BY: MCOLE DATE: 2013/12/09	TITLE COB LED HOLDER ASSEMBLY 19.0 MM X 19.0 MM SQUARE																				
SIZE B			APPROVED BY: DMCGOWAN DATE: 2013/12/09	MATERIAL NO.	DOCUMENT NO. SD-180414-113	SHEET NO. 1 OF 6																			
THIS DRAWING CONTAINS INFORMATION THAT IS PROPRIETARY TO MOLEX INCORPORATED AND SHOULD NOT BE USED WITHOUT WRITTEN PERMISSION																									

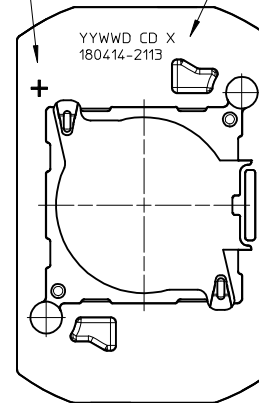
10 9 8 7 6 5 4 3 2 1

P/N 180414-2113 HOLDER ASSEMBLY (0.75 POCKET DEPTH)



PART MARKED WITH POLARITY SIGN "+"

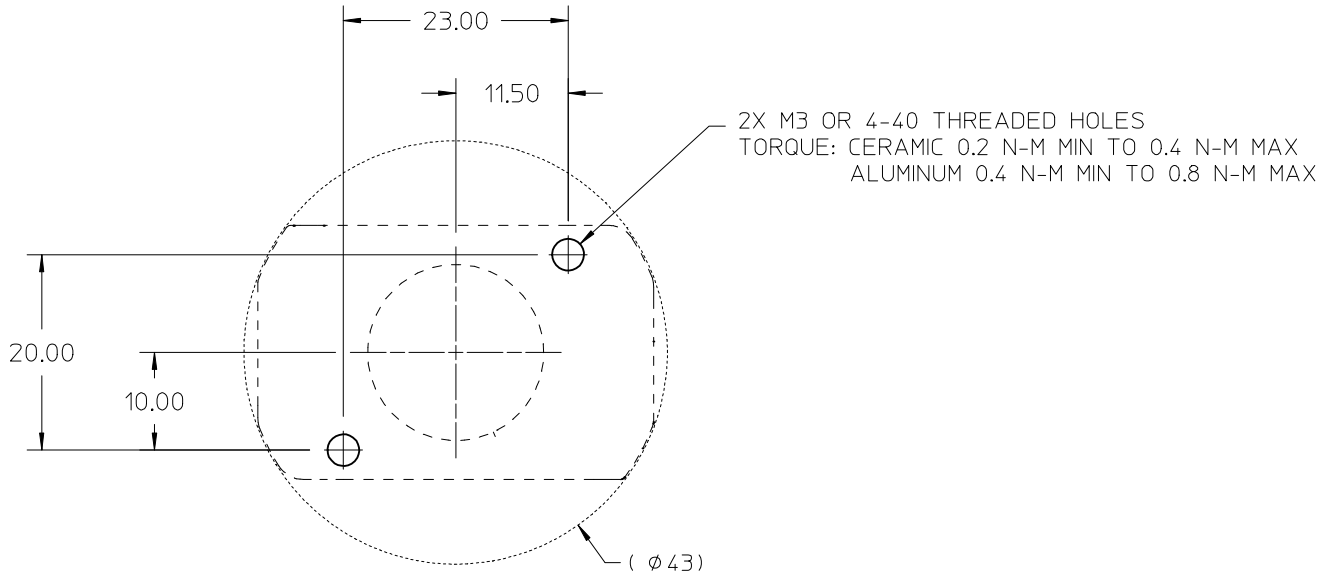
PART MARKED WITH DATE CODE (YYWWD)
MFG PLANT (CD)
REVISION (X)
PART NUMBER (180414-2113)



ENTER DESCRIPTION EC NO: SSL2017-0024 DRWNL: ZAB.JANOVSKI 2017/02/21 CHKD: APPR: BPT.SZCZOR 2017/03/07 REV	QUALITY SYMBOLS $\nabla = 0$ $\nabla = 0$ $\nabla = 0$	GENERAL TOLERANCES (UNLESS SPECIFIED) mm INCH 4 PLACES ± --- ± --- 3 PLACES ± --- ± --- 2 PLACES ± 0.13 ± --- 1 PLACE ± 0.25 ± --- 0 PLACE ± --- ± --- ANGULAR ± 1/2°	DIMENSION STYLE MM ONLY DRAWN BY DATE MCOLE 2013/12/09 CHECKED BY DATE MCOLE 2013/12/09 APPROVED BY DATE DMCGOWAN 2013/12/09 MATERIAL NO.	SCALE 2:1 DESIGN UNITS METRIC THIRD ANGLE PROJECTION	TITLE COB LED HOLDER ASSEMBLY 19.0 MM X 19.0 MM SQUARE molex DOCUMENT NO. SD-180414-113 SHEET NO. 2 OF 6
	DRAFT WHERE APPLICABLE MUST REMAIN WITHIN DIMENSIONS	SEE CHART	THIS DRAWING CONTAINS INFORMATION THAT IS PROPRIETARY TO MOLEX INCORPORATED AND SHOULD NOT BE USED WITHOUT WRITTEN PERMISSION		
	B4	B	B		
	B4	B	B		

9 8 7 6 5 4 3 2 1

10 9 8 7 6 5 4 3 2 1



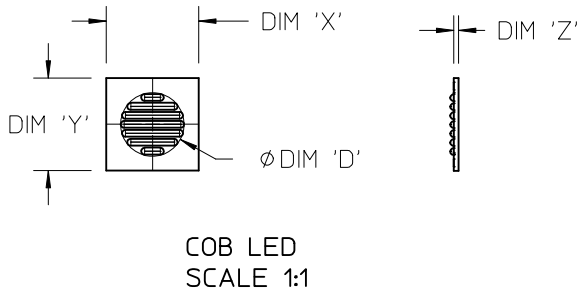
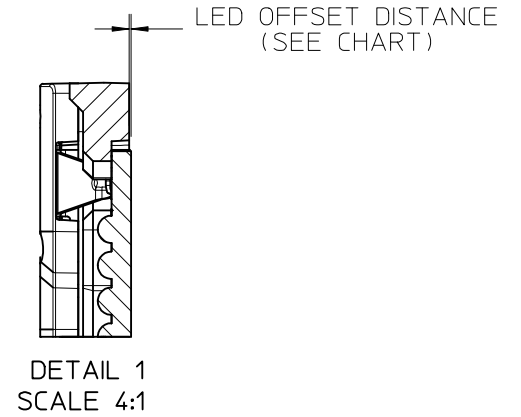
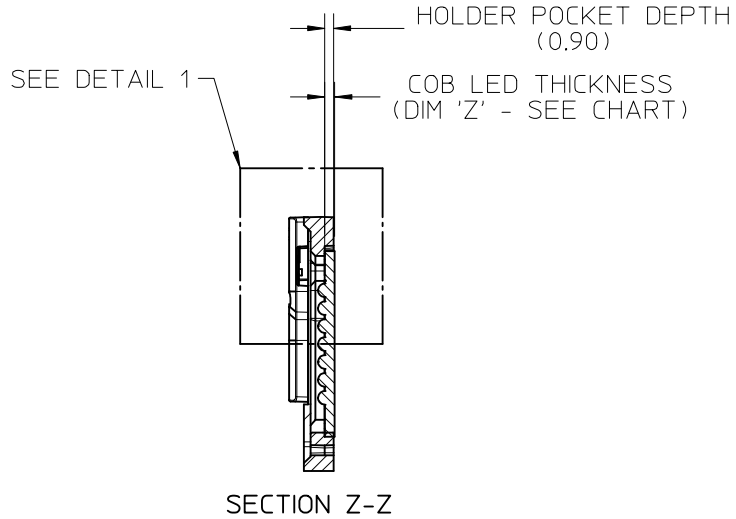
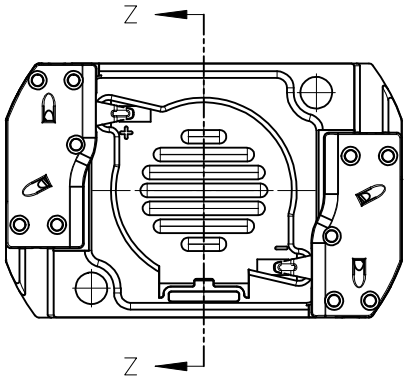
RECOMMENDED MOUNTING DIMENSIONIS

ENTER DESCRIPTION EC NO: SSL2017-0024 DRWNL:ZAB.JANOVSKI 2017/02/21 CHKD: APPR:BPISZCZOR 2017/03/07	QUALITY SYMBOLS $\nabla = 0$ $\nabla = 0$ $\nabla = 0$	GENERAL TOLERANCES (UNLESS SPECIFIED)		DIMENSION STYLE MM ONLY		SCALE 2:1	DESIGN UNITS METRIC	THIRD ANGLE PROJECTION			
		4 PLACES \pm --- \pm ---	mm INCH	DRAWN BY MCOLE	DATE 2013/12/09	TITLE COB LED HOLDER ASSEMBLY 19.0 MM X 19.0 MM SQUARE					
		3 PLACES \pm --- \pm ---	2 PLACES ± 0.13 \pm ---	CHECKED BY MCOLE	DATE 2013/12/09						
		1 PLACE ± 0.25 \pm ---	0 PLACE \pm --- \pm ---	APPROVED BY DMCGOWAN	DATE 2013/12/09	MATERIAL NO. SEE CHART					
ANGULAR $\pm 1/2^\circ$		DRAFT WHERE APPLICABLE MUST REMAIN WITHIN DIMENSIONS		DOCUMENT NO. SD-180414-113							
B4	REV	THIS DRAWING CONTAINS INFORMATION THAT IS PROPRIETARY TO MOLEX INCORPORATED AND SHOULD NOT BE USED WITHOUT WRITTEN PERMISSION									

9 8 7 6 5 4 3 2 1

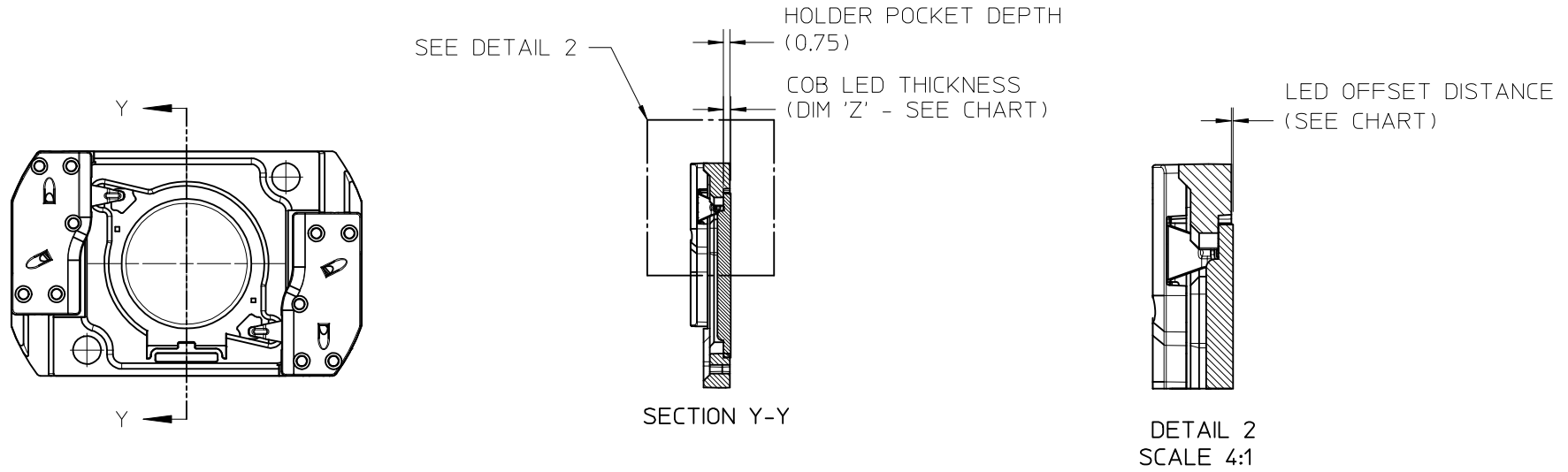
10	9	8	7	6	5	4	3	2	1
COB MFG	TYPE		DIM 'X'	DIM 'Y'	DIM 'Z'	DIM 'D'	OFFSET		
VOSSLOH-SCHWABE	DMC114C		19.0	19.0	1.0	11.9	0.10		
VOSSLOH-SCHWABE	DMC124***F, DMC125***F		19.0	19.0	1.0	13.1	0.10		
VOSSLOH-SCHWABE	DMC125C		19.0	19.0	1.0	13.1	0.10		
VOSSLOH-SCHWABE	DMC128***F		19.0	19.0	1.0	15.8	0.10		

ILLUSTRATION OF P/N 180414-1113 HOLDER MATED WITH LED



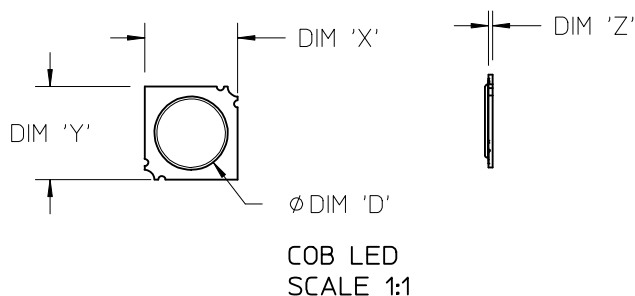
ENTER DESCRIPTION EC NO: SSL2017-0024 DRWNL:ZAB.JANOVSKI 2017/02/21 CHKD: APPR:BPISZCZOR 2017/03/07	REVISION B4	QUALITY SYMBOLS ▽/0 ▽/0 ▽/0	GENERAL TOLERANCES (UNLESS SPECIFIED)		DIMENSION STYLE MM ONLY		SCALE 2:1	DESIGN UNITS METRIC	THIRD ANGLE PROJECTION			
					DRAWN BY MCOLE	DATE 2013/12/09			COB LED HOLDER ASSEMBLY 19.0 MM X 19.0 MM SQUARE			
					CHECKED BY MCOLE	DATE 2013/12/09						
					APPROVED BY DMCGOWAN	DATE 2013/12/09			molex			
		ANGULAR ±1/2°		MATERIAL NO.		DOCUMENT NO.		SHEET NO.				
		DRAFT WHERE APPLICABLE MUST REMAIN WITHIN DIMENSIONS		SEE CHART		SD-180414-113		4 OF 6				
THIS DRAWING CONTAINS INFORMATION THAT IS PROPRIETARY TO MOLEX INCORPORATED AND SHOULD NOT BE USED WITHOUT WRITTEN PERMISSION												

ILLUSTRATION OF P/N 180414-2113 HOLDER MATED WITH LED



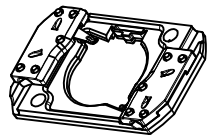
ENTER DESCRIPTION EC NO: SSL2017-0024 DRWNL:ZAB.JANOVSKI 2017/02/21 CHKD: APPR:BPISZCZOR 2017/03/07 REV B4	QUALITY SYMBOLS	GENERAL TOLERANCES (UNLESS SPECIFIED)	DIMENSION STYLE	SCALE	DESIGN UNITS	THIRD ANGLE PROJECTION
	$\nabla F/0$ $\nabla F/0$ $\nabla F/0$	mm INCH 4 PLACES ± --- ± --- 3 PLACES ± --- ± --- 2 PLACES ± 0.13 ± --- 1 PLACE ± 0.25 ± --- 0 PLACE ± --- ± ---	MM ONLY	2:1	METRIC	COB LED HOLDER ASSEMBLY 19.0 MM X 19.0 MM SQUARE molex
			DRAWN BY DATE MCOLE 2013/12/09	CHECKED BY DATE MCOLE 2013/12/09	TITLE COB LED HOLDER ASSEMBLY 19.0 MM X 19.0 MM SQUARE	
			APPROVED BY DATE DMCGOWAN 2013/12/09	MATERIAL NO. SEE CHART		
DRAFT WHERE APPLICABLE MUST REMAIN WITHIN DIMENSIONS		THIS DRAWING CONTAINS INFORMATION THAT IS PROPRIETARY TO MOLEX INCORPORATED AND SHOULD NOT BE USED WITHOUT WRITTEN PERMISSION				

COB MFG	TYPE	DIM 'X'	DIM 'Y'	DIM 'Z'	DIM 'D'	OFFSET
CITIZEN	CLL030, CLL032, CLU034, CLU036, CLU038	19.0	19.0	0.90	17.0	0.15
SEOUL	ZC12, ZC18	19.0	19.0	0.90	16.0	0.15
TRIDONIC	SLE G5 LES15	19.0	19.0	0.90	15.0	0.15
CITIZEN	CLU720, CLU721	19.0	19.0	0.90	13.5	0.15
EVERLIGHT	EAHP1919WA*, EAHP1919WB*, EAHP1919WC*	19.0	19.0	0.90	15.5	0.15
EVERLIGHT	EA1919 36V/16W	19.0	19.0	0.90	15.5	0.15
EVERLIGHT	EA1919 36V/19W	19.0	19.0	0.90	15.5	0.15
EVERLIGHT	EA1919 36V/26W	19.0	19.0	0.90	15.5	0.15
VOSSLOH-SCHWABE	DMC114C	19.0	19.0	1.00	11.9	0.25
VOSSLOH-SCHWABE	DMC124***F, DMC125***F	19.0	19.0	1.00	13.1	0.25
VOSSLOH-SCHWABE	DMC125C	19.0	19.0	1.00	13.1	0.25
VOSSLOH-SCHWABE	DMC128***F	19.0	19.0	1.00	15.8	0.25
BRIDGELUX	H15	19.0	19.0	1.10	16.5	0.35



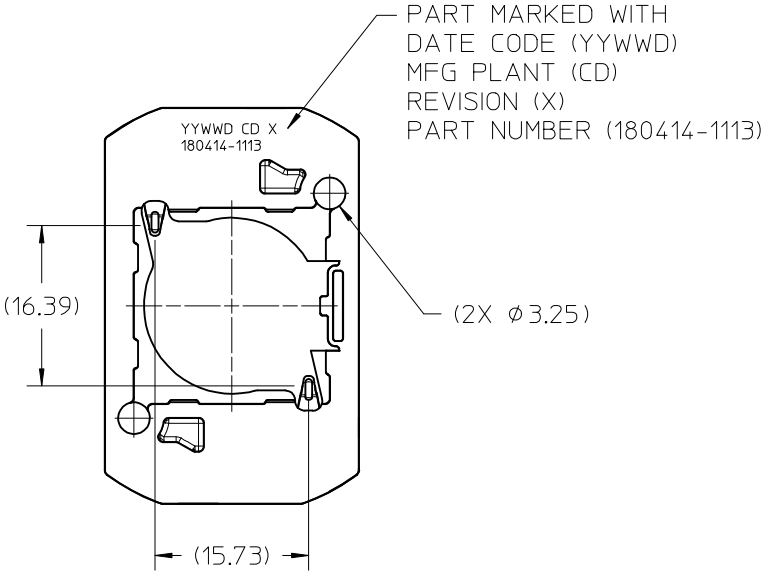
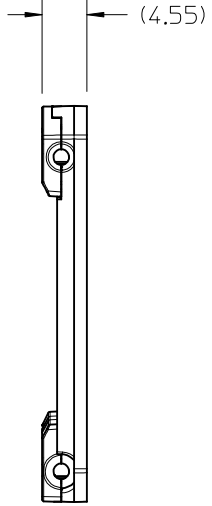
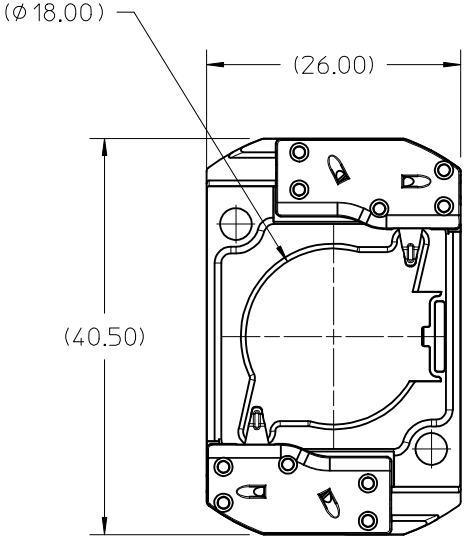
ENTER DESCRIPTION EC NO: SSL2017-0024 DRWNL:ZAB.JANOVSKI 2017/02/21 CHKD: APPR:BP1SZCZOR 2017/03/07 REV	QUALITY SYMBOLS	GENERAL TOLERANCES (UNLESS SPECIFIED)		DIMENSION STYLE MM ONLY		SCALE 2:1	DESIGN UNITS METRIC	THIRD ANGLE PROJECTION		
	▽=0	mm	INCH	DRAWN BY	DATE	TITLE COB LED HOLDER ASSEMBLY 19.0 MM X 19.0 MM SQUARE				
	▽=0	4 PLACES ± --- ± ---	3 PLACES ± --- ± ---	MCOLE	2013/12/09					
		2 PLACES ± 0.13 ± ---	1 PLACE ± 0.25 ± ---	0 PLACE ± --- ± ---	CHECKED BY	DATE	molex DOCUMENT NO. SD-180414-113 SHEET NO. 6 OF 6			
		ANGULAR ± 1/2°			MCOLE	2013/12/09				
B4	DRAFT WHERE APPLICABLE MUST REMAIN WITHIN DIMENSIONS			MATERIAL NO. SEE CHART		THIS DRAWING CONTAINS INFORMATION THAT IS PROPRIETARY TO MOLEX INCORPORATED AND SHOULD NOT BE USED WITHOUT WRITTEN PERMISSION				

10	9	8	7	6	5	4	3	2	1	
PART NUMBER	DESCRIPTION		POCKET DEPTH	HOUSING	TERMINAL	CAP				
180414-1113	COB LED HOLDER ASSEMBLY		0.90	180413-1113	180155-0133	180154-0105				
180414-2113	COB LED HOLDER ASSEMBLY		0.75	180413-2113	180155-0133	180154-0105				



ISO VIEW 1
SCALE 1:1

P/N 180414-1113 HOLDER ASSEMBLY
(0.90 POCKET DEPTH)



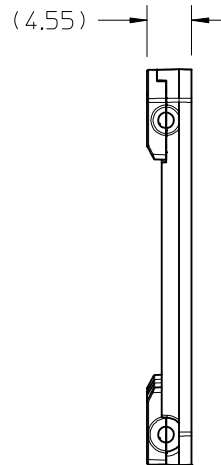
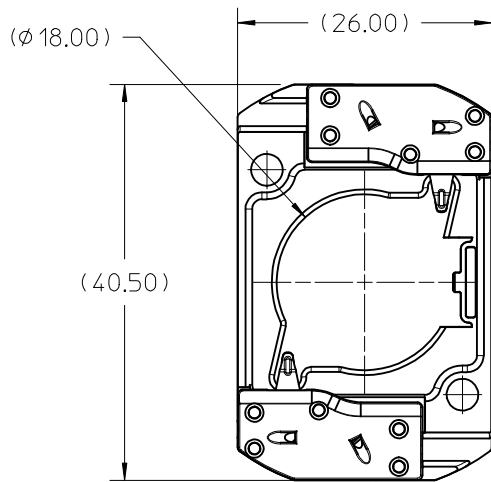
PART MARKED WITH
DATE CODE (YYWWD)
MFG PLANT (CD)
REVISION (X)
PART NUMBER (180414-1113)

- NOTES:
1. MATERIALS: HOUSING AND CAPS: POLYESTER PBT GLASS FILLED; COLOR: WHITE; TERMINAL: COPPER ALLOY
 2. FINISHES: TERMINAL CONTACT: SELECT GOLD OVER NICKEL WIRE TRAP: SELECT TIN OVER NICKEL
 3. PRODUCT SPECIFICATION: 180414-0000-PS
 4. PACKAGING SPECIFICATION: PK-180419-006
 5. UL:OLFB2 UL496 FILE NO. E345583
 6. ELV AND ROHS COMPLIANT
 7. FOR USE WITH: 19.0 MM X 19.0 MM COB LED
 8. WIRE GAUGE: 18, 20, AND 22 AWG, SOLID OR STRANDED WITH TIN OVERCOAT. STRIP LENGTH 10MM +2.0/-0.0MM.
 9. ALL DIMENSIONS IN PARENTHESES (XX.XX) ARE FOR REFERENCE ONLY

ENTER DESCRIPTION EC NO: SSL2017-0024 DRWN: L ZAB, JANOVSKI 2017/02/21 CHKD: APPR: BPT/SZCZOR 2017/03/07 REV B4	QUALITY SYMBOLS	GENERAL TOLERANCES (UNLESS SPECIFIED)	DIMENSION STYLE	SCALE	DESIGN UNITS	THIRD ANGLE PROJECTION
	$\nabla F/0$ $\nabla F/0$ $\nabla F/0$	mm	MM ONLY	2:1	METRIC	COB LED HOLDER ASSEMBLY 19.0 MM X 19.0 MM SQUARE molex
		INCH	DRAWN BY	DATE	TITLE	
		4 PLACES ± --- ± --- 3 PLACES ± --- ± --- 2 PLACES ± 0.13 ± --- 1 PLACE ± 0.25 ± --- 0 PLACE ± --- ± --- ANGULAR ± 1/2°	MCOLE 2013/12/09 CHECKED BY DATE MCOLE 2013/12/09 APPROVED BY DATE DMCGOWAN 2013/12/09	SD-180414-113 DOCUMENT NO.		
DRAFT WHERE APPLICABLE MUST REMAIN WITHIN DIMENSIONS	SIZE B	SEE CHART	THIS DRAWING CONTAINS INFORMATION THAT IS PROPRIETARY TO MOLEX INCORPORATED AND SHOULD NOT BE USED WITHOUT WRITTEN PERMISSION		SHEET NO. 1 OF 6	

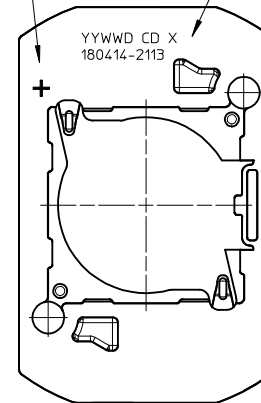
10 9 8 7 6 5 4 3 2 1

P/N 180414-2113 HOLDER ASSEMBLY (0.75 POCKET DEPTH)



PART MARKED WITH POLARITY SIGN "+"

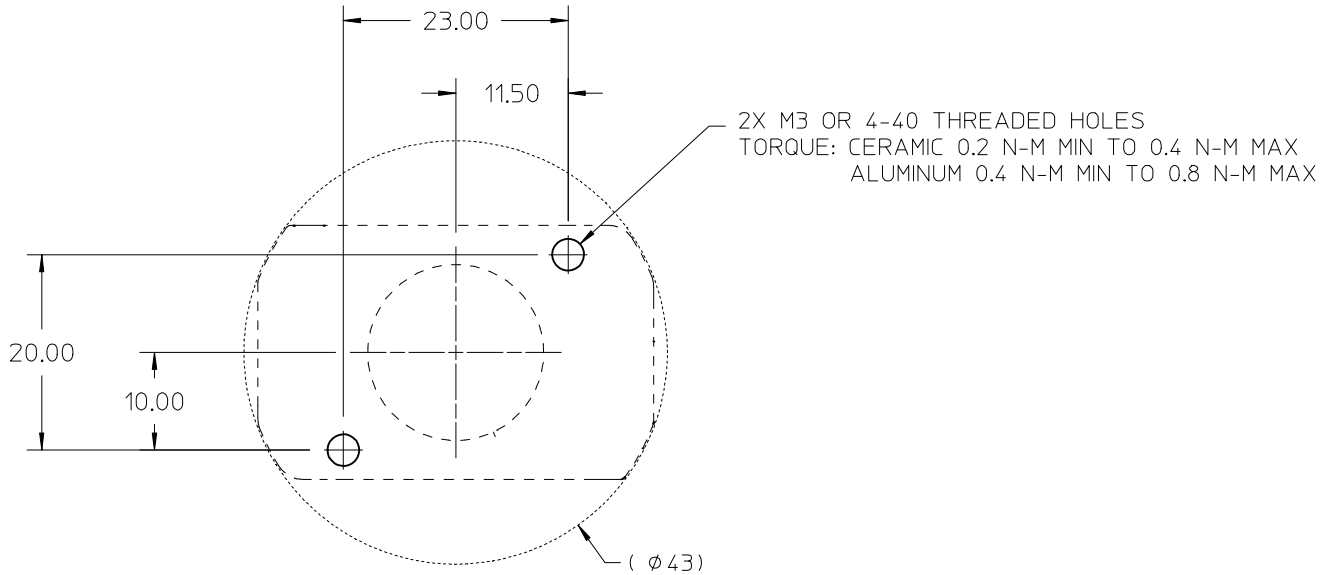
PART MARKED WITH DATE CODE (YYWWD)
MFG PLANT (CD)
REVISION (X)
PART NUMBER (180414-2113)



ENTER DESCRIPTION EC NO: SSL2017-0024 DRWNL: ZAB.JANOVSKI 2017/02/21 CHKD: APPR: BPT.SZCZOR 2017/03/07 REV	QUALITY SYMBOLS	GENERAL TOLERANCES (UNLESS SPECIFIED)		DIMENSION STYLE MM ONLY		SCALE 2:1	DESIGN UNITS METRIC	THIRD ANGLE PROJECTION	
	$\nabla = 0$	mm	INCH	DRAWN BY	DATE	TITLE COB LED HOLDER ASSEMBLY 19.0 MM X 19.0 MM SQUARE			
	$\nabla = 0$	4 PLACES ± ---	± ---	MCOLE	2013/12/09				
	$\nabla = 0$	3 PLACES ± ---	± ---	CHECKED BY	DATE	DOCUMENT NO. SD-180414-113			
$\nabla = 0$	2 PLACES ± 0.13	± ---	MCOLE	2013/12/09					
	1 PLACE ± 0.25	± ---	APPROVED BY	DATE	SHEET NO. 2 OF 6				
	0 PLACE ± ---	± ---	DMCGOWAN	2013/12/09					
DRAFT WHERE APPLICABLE MUST REMAIN WITHIN DIMENSIONS		ANGULAR ± 1/2°		MATERIAL NO.		THIS DRAWING CONTAINS INFORMATION THAT IS PROPRIETARY TO MOLEX INCORPORATED AND SHOULD NOT BE USED WITHOUT WRITTEN PERMISSION			
B4		SEE CHART		SIZE B					

9 8 7 6 5 4 3 2 1

10 9 8 7 6 5 4 3 2 1



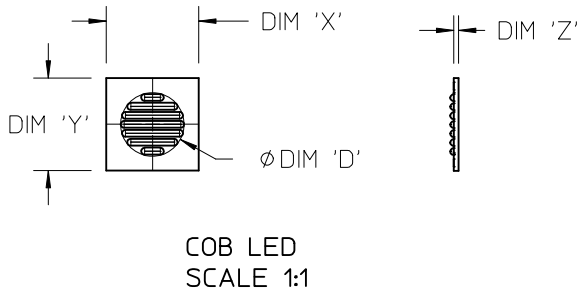
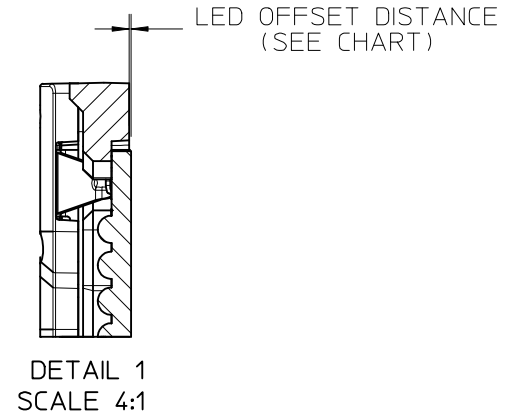
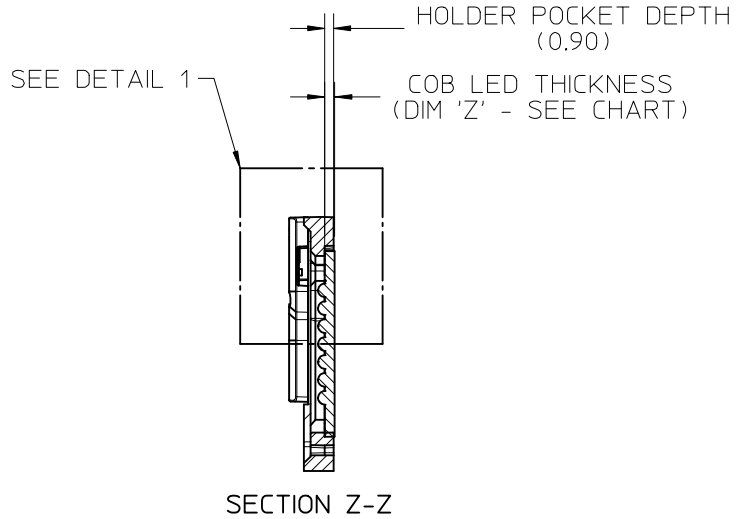
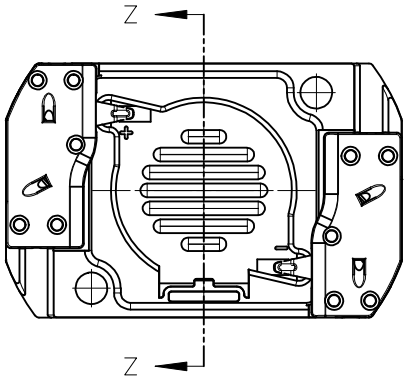
RECOMMENDED MOUNTING DIMENSIONIS

ENTER DESCRIPTION EC NO: SSL2017-0024 DRWNL:ZAB.JANOVSKI 2017/02/21 CHKD: APPR:BPISZCZOR 2017/03/07	QUALITY SYMBOLS $\nabla F/0$ $\nabla F/0$ $\nabla F/0$	GENERAL TOLERANCES (UNLESS SPECIFIED)		DIMENSION STYLE MM ONLY		SCALE 2:1	DESIGN UNITS METRIC	THIRD ANGLE PROJECTION			
		4 PLACES \pm --- \pm ---	mm INCH	DRAWN BY MCOLE	DATE 2013/12/09	TITLE COB LED HOLDER ASSEMBLY 19.0 MM X 19.0 MM SQUARE					
		3 PLACES \pm --- \pm ---	2 PLACES ± 0.13 \pm ---	CHECKED BY MCOLE	DATE 2013/12/09						
		1 PLACE ± 0.25 \pm ---	0 PLACE \pm --- \pm ---	APPROVED BY DMCGOWAN	DATE 2013/12/09	MATERIAL NO. SEE CHART					
ANGULAR $\pm 1/2^\circ$		DRAFT WHERE APPLICABLE MUST REMAIN WITHIN DIMENSIONS		DOCUMENT NO. SD-180414-113							
B4	REV	THIS DRAWING CONTAINS INFORMATION THAT IS PROPRIETARY TO MOLEX INCORPORATED AND SHOULD NOT BE USED WITHOUT WRITTEN PERMISSION									

9 8 7 6 5 4 3 2 1

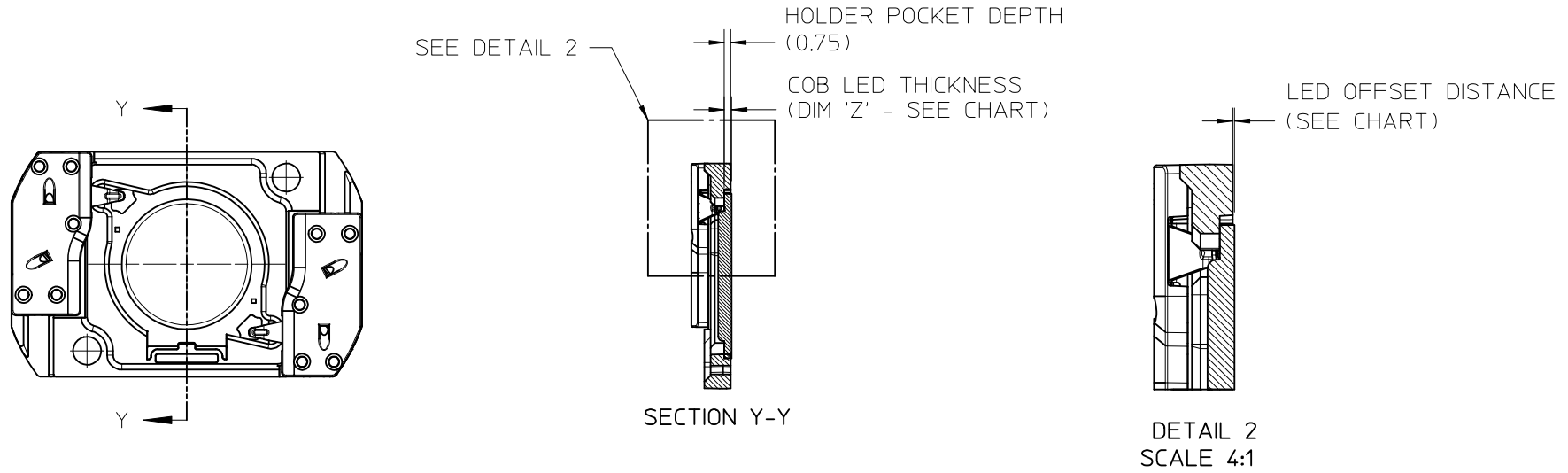
10	9	8	7	6	5	4	3	2	1
COB MFG	TYPE		DIM 'X'	DIM 'Y'	DIM 'Z'	DIM 'D'	OFFSET		
VOSSLOH-SCHWABE	DMC114C		19.0	19.0	1.0	11.9	0.10		
VOSSLOH-SCHWABE	DMC124***F, DMC125***F		19.0	19.0	1.0	13.1	0.10		
VOSSLOH-SCHWABE	DMC125C		19.0	19.0	1.0	13.1	0.10		
VOSSLOH-SCHWABE	DMC128***F		19.0	19.0	1.0	15.8	0.10		

ILLUSTRATION OF P/N 180414-1113 HOLDER MATED WITH LED



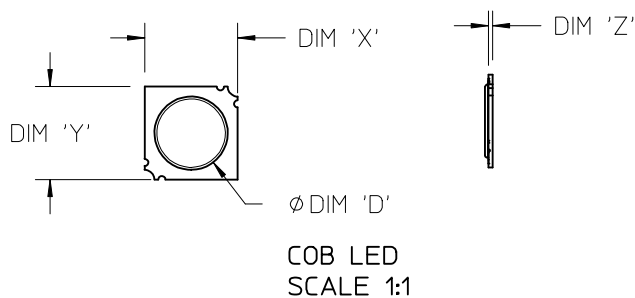
ENTER DESCRIPTION EC NO: SSL2017-0024 DRWNL:ZAB.JANOVSKI 2017/02/21 CHKD: APPR:BPISZCZOR 2017/03/07 B4	QUALITY SYMBOLS ▽/0 ▽/0 ▽/0	GENERAL TOLERANCES (UNLESS SPECIFIED)		DIMENSION STYLE MM ONLY		SCALE 2:1	DESIGN UNITS METRIC	THIRD ANGLE PROJECTION		
				DRAWN BY MCOLE	DATE 2013/12/09	TITLE COB LED HOLDER ASSEMBLY 19.0 MM X 19.0 MM SQUARE				
				CHECKED BY MCOLE	DATE 2013/12/09					
				APPROVED BY DMCGOWAN	DATE 2013/12/09	MATERIAL NO. SEE CHART		DOCUMENT NO. SD-180414-113	SHEET NO. 4 OF 6	
		ANGULAR $\pm 1/2^\circ$ DRAFT WHERE APPLICABLE MUST REMAIN WITHIN DIMENSIONS		SIZE B		THIS DRAWING CONTAINS INFORMATION THAT IS PROPRIETARY TO MOLEX INCORPORATED AND SHOULD NOT BE USED WITHOUT WRITTEN PERMISSION				

ILLUSTRATION OF P/N 180414-2113 HOLDER MATED WITH LED



ENTER DESCRIPTION EC NO: SSL2017-0024 DRWNL:ZAB.JANOVSKI 2017/02/21 CHKD: APPR:BPISZCZOR 2017/03/07 REV B4	QUALITY SYMBOLS	GENERAL TOLERANCES (UNLESS SPECIFIED)	DIMENSION STYLE	SCALE	DESIGN UNITS	THIRD ANGLE PROJECTION	
	$\nabla = 0$ $\nabla = 0$ $\nabla = 0$	mm	INCH	MM ONLY	2:1	METRIC	COB LED HOLDER ASSEMBLY 19.0 MM X 19.0 MM SQUARE molex
		4 PLACES	± ---	± ---	DRAWN BY	DATE	
		3 PLACES	± ---	± ---	MCOLE	2013/12/09	
	2 PLACES	± 0.13	± ---	CHECKED BY	DATE		
	1 PLACE	± 0.25	± ---	MCOLE	2013/12/09		
	0 PLACE	± ---	± ---	APPROVED BY	DATE		
		ANGULAR	± 1/2°	DMCGOWAN	2013/12/09		
		DRAFT WHERE APPLICABLE MUST REMAIN WITHIN DIMENSIONS		MATERIAL NO.	SEE CHART	DOCUMENT NO.	
		SIZE	B	THIS DRAWING CONTAINS INFORMATION THAT IS PROPRIETARY TO MOLEX INCORPORATED AND SHOULD NOT BE USED WITHOUT WRITTEN PERMISSION		SHEET NO.	
				SD-180414-113		5 OF 6	

COB MFG	TYPE	DIM 'X'	DIM 'Y'	DIM 'Z'	DIM 'D'	OFFSET
CITIZEN	CLL030, CLL032, CLU034, CLU036, CLU038	19.0	19.0	0.90	17.0	0.15
SEOUL	ZC12, ZC18	19.0	19.0	0.90	16.0	0.15
TRIDONIC	SLE G5 LES15	19.0	19.0	0.90	15.0	0.15
CITIZEN	CLU720, CLU721	19.0	19.0	0.90	13.5	0.15
EVERLIGHT	EAHP1919WA*, EAHP1919WB*, EAHP1919WC*	19.0	19.0	0.90	15.5	0.15
EVERLIGHT	EA1919 36V/16W	19.0	19.0	0.90	15.5	0.15
EVERLIGHT	EA1919 36V/19W	19.0	19.0	0.90	15.5	0.15
EVERLIGHT	EA1919 36V/26W	19.0	19.0	0.90	15.5	0.15
VOSSLOH-SCHWABE	DMC114C	19.0	19.0	1.00	11.9	0.25
VOSSLOH-SCHWABE	DMC124***F, DMC125***F	19.0	19.0	1.00	13.1	0.25
VOSSLOH-SCHWABE	DMC125C	19.0	19.0	1.00	13.1	0.25
VOSSLOH-SCHWABE	DMC128***F	19.0	19.0	1.00	15.8	0.25
BRIDGELUX	H15	19.0	19.0	1.10	16.5	0.35



ENTER DESCRIPTION EC NO: SSL2017-0024 DRWNL:ZAB.JANOVSKI 2017/02/21 CHKD: APPR:BP1SZCZOR 2017/03/07 REV	QUALITY SYMBOLS	GENERAL TOLERANCES (UNLESS SPECIFIED)		DIMENSION STYLE MM ONLY		SCALE 2:1	DESIGN UNITS METRIC	THIRD ANGLE PROJECTION		
	▽=0	mm	INCH	DRAWN BY	DATE	TITLE COB LED HOLDER ASSEMBLY 19.0 MM X 19.0 MM SQUARE				
	▽=0	4 PLACES ± --- ± ---	3 PLACES ± --- ± ---	MCOLE	2013/12/09					
		2 PLACES ± 0.13 ± ---	1 PLACE ± 0.25 ± ---	0 PLACE ± --- ± ---	CHECKED BY	DATE	molex DOCUMENT NO. SD-180414-113 SHEET NO. 6 OF 6			
		ANGULAR ± 1/2°		APPROVED BY		DATE				
B4	DRAFT WHERE APPLICABLE MUST REMAIN WITHIN DIMENSIONS		MATERIAL NO.		SEE CHART					