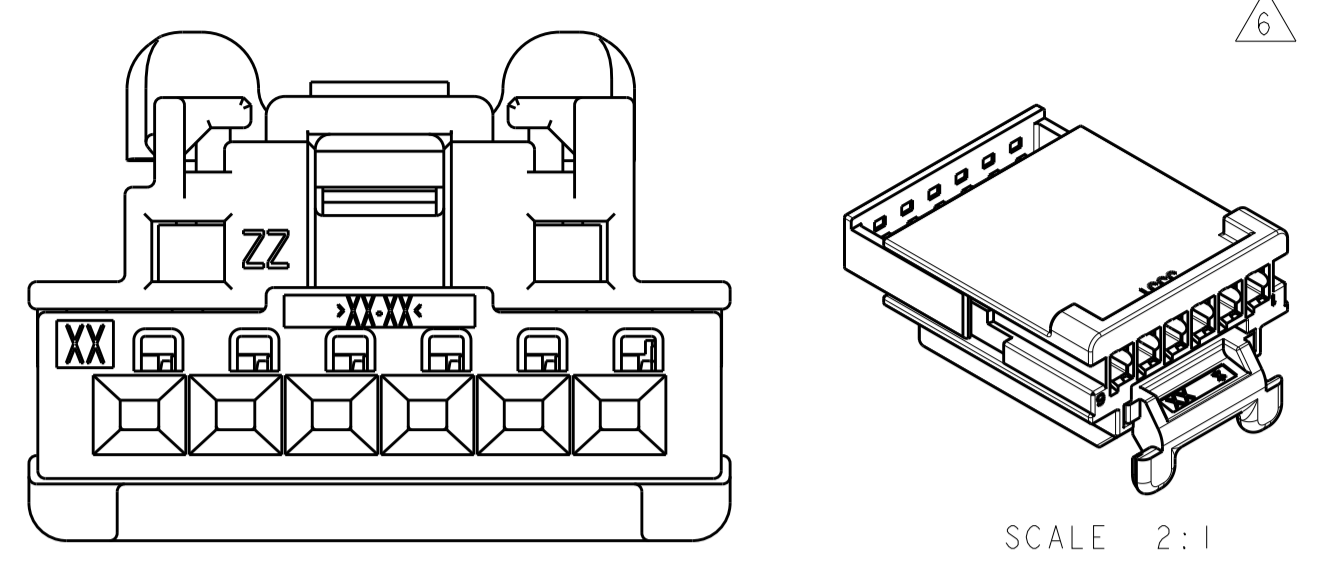


REVISIONS				
P.	LTN	DESCRIPTION	DATE	OWN APVD
B1		REVISED PER ECO-15-011565	21AUG2015	DLD DCM
B2		REVISED PER ECO-17-009179	23JUN2017	DLD DCM
B3		REVISED PER ECO-18-009918	26JUN2018	JMS CM
B4		REVISED PER ECO-18-013902	31AUG2018	JMS CM

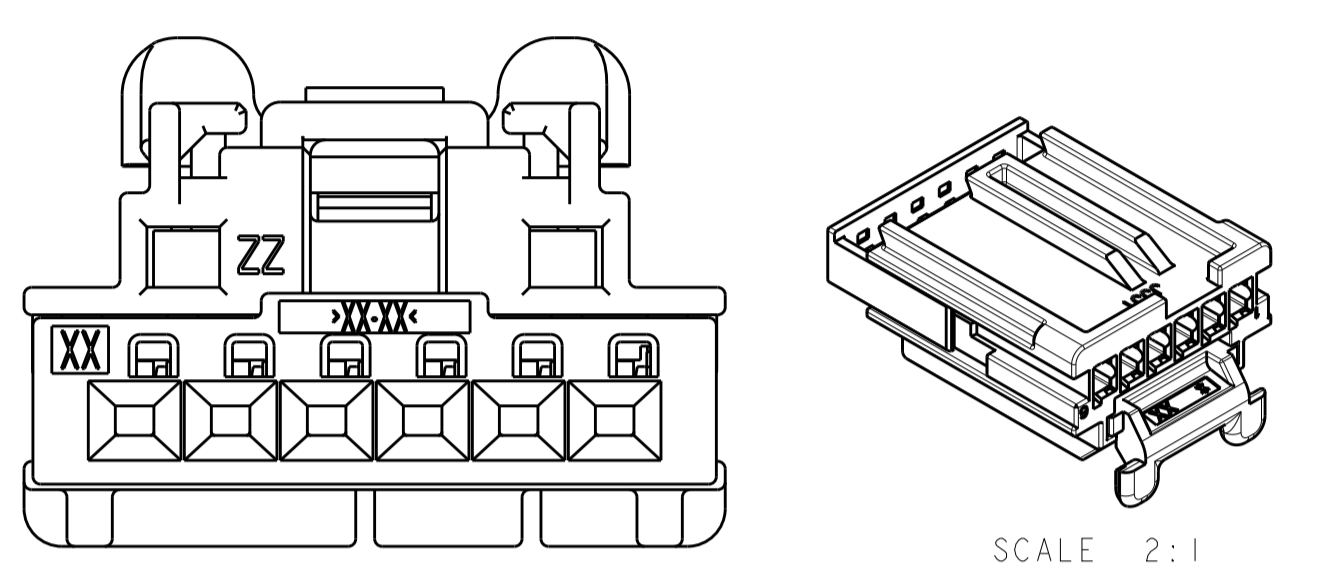
KEYING OPTIONS  
(SHOWN WITH CPA)

KEYING OPTION: B



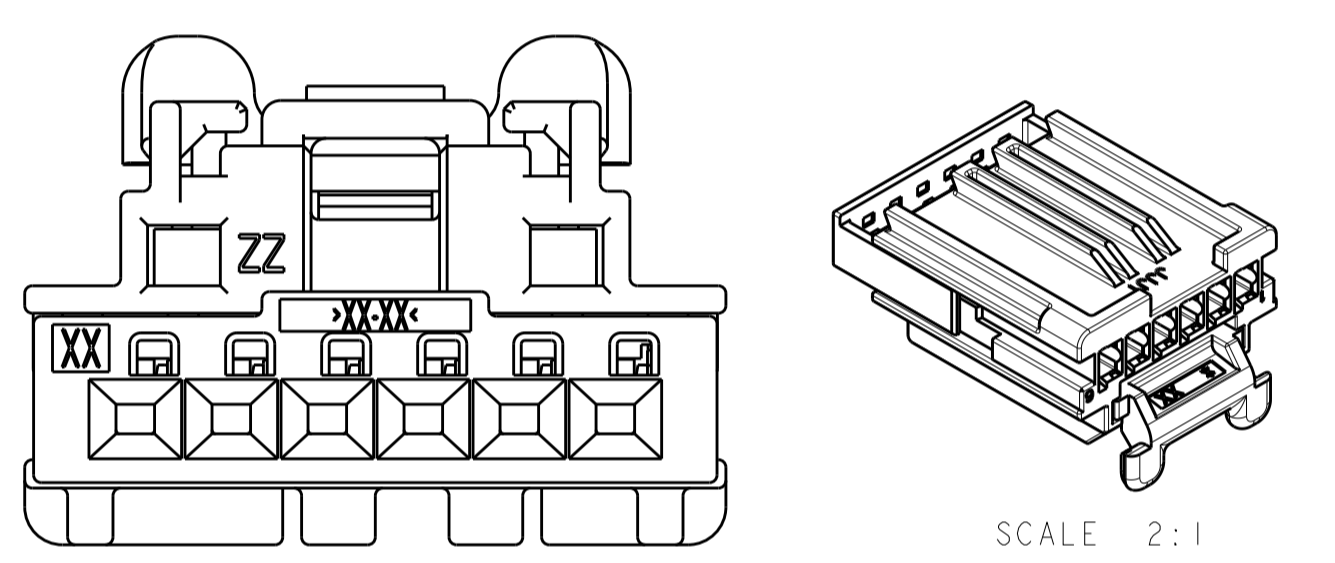
SCALE 2:1

KEYING OPTION: C



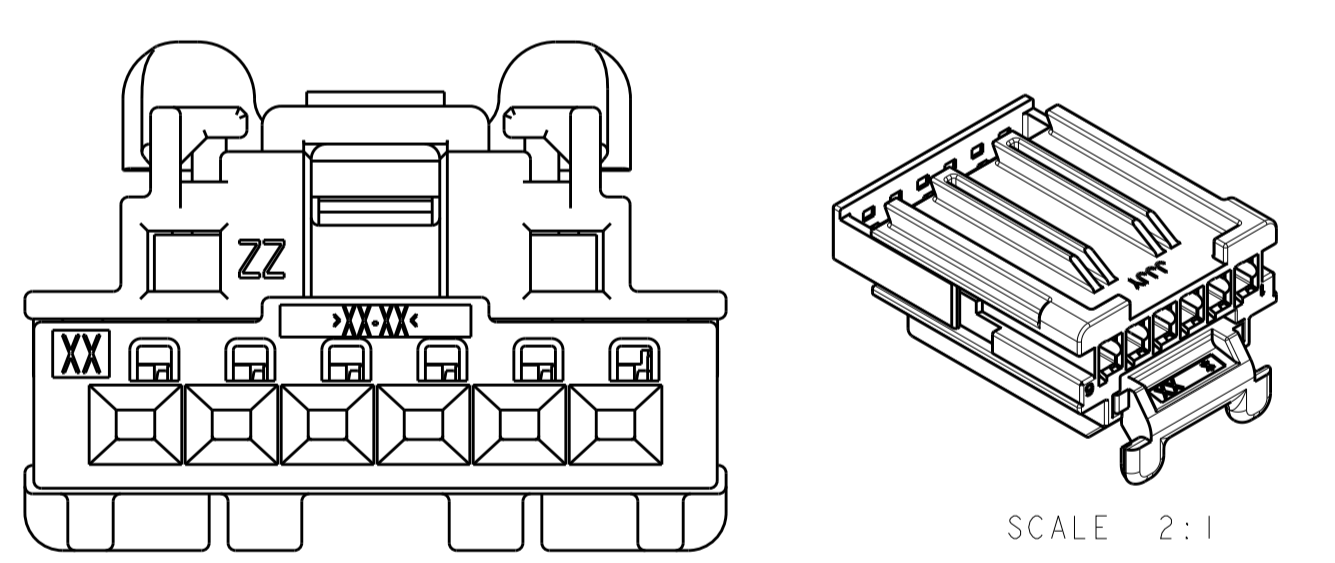
SCALE 2:1

KEYING OPTION: D



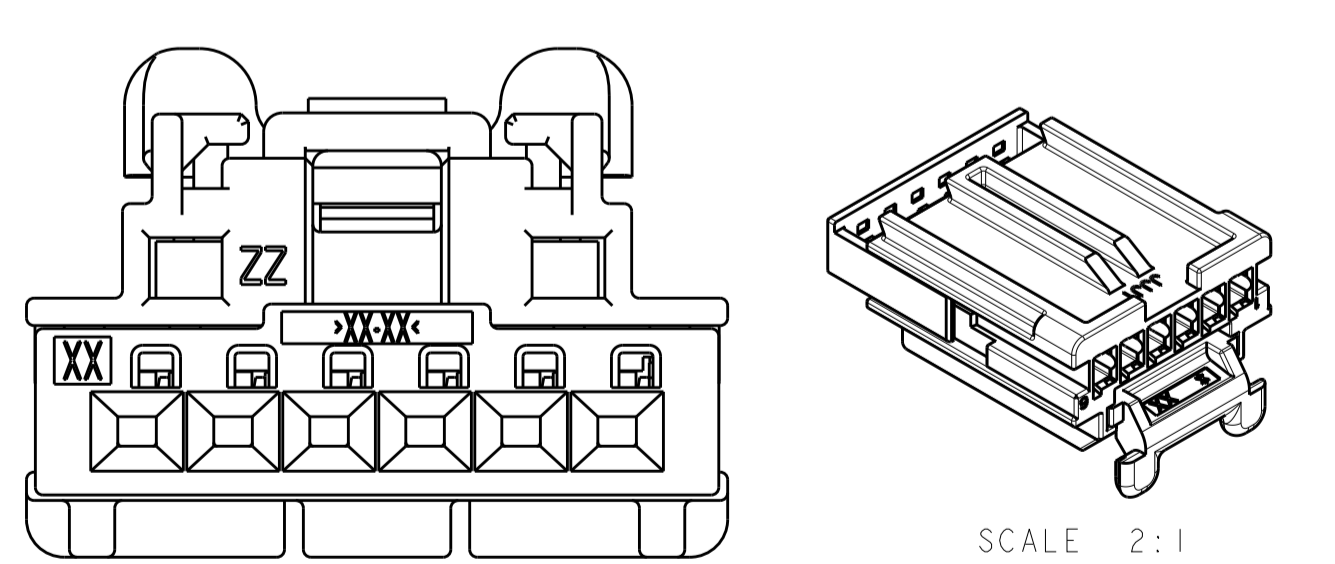
SCALE 2:1

KEYING OPTION: E

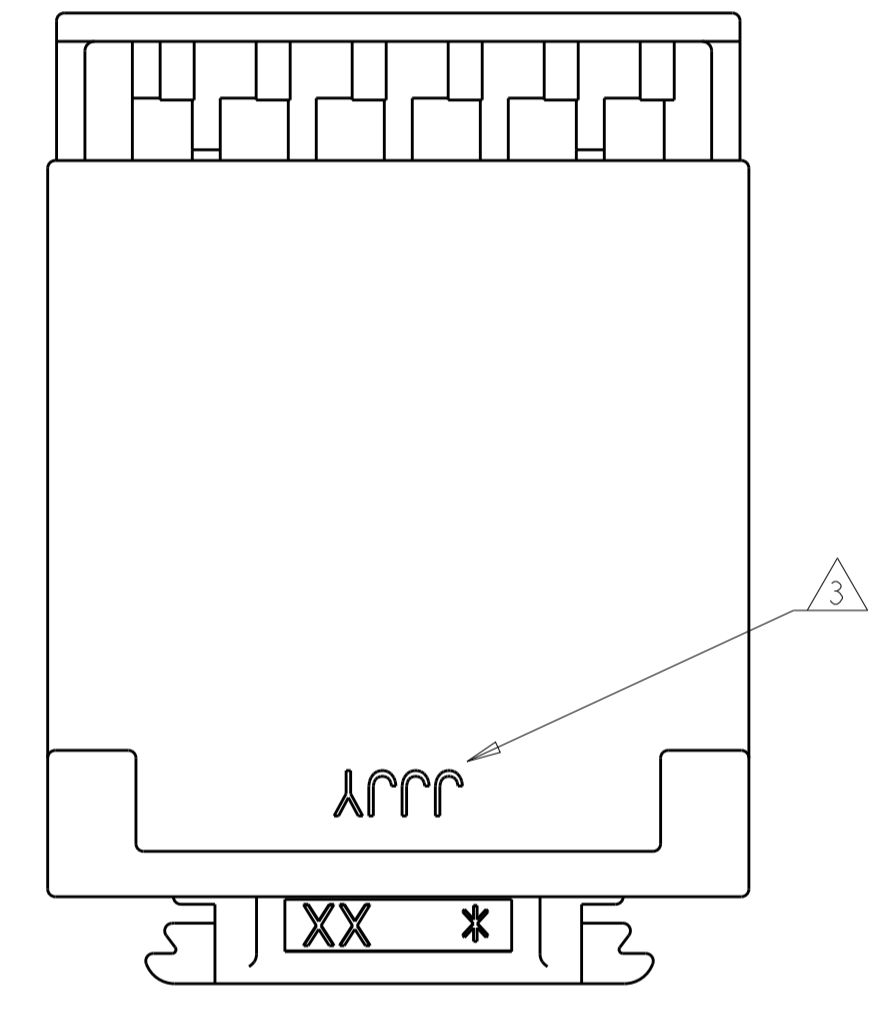
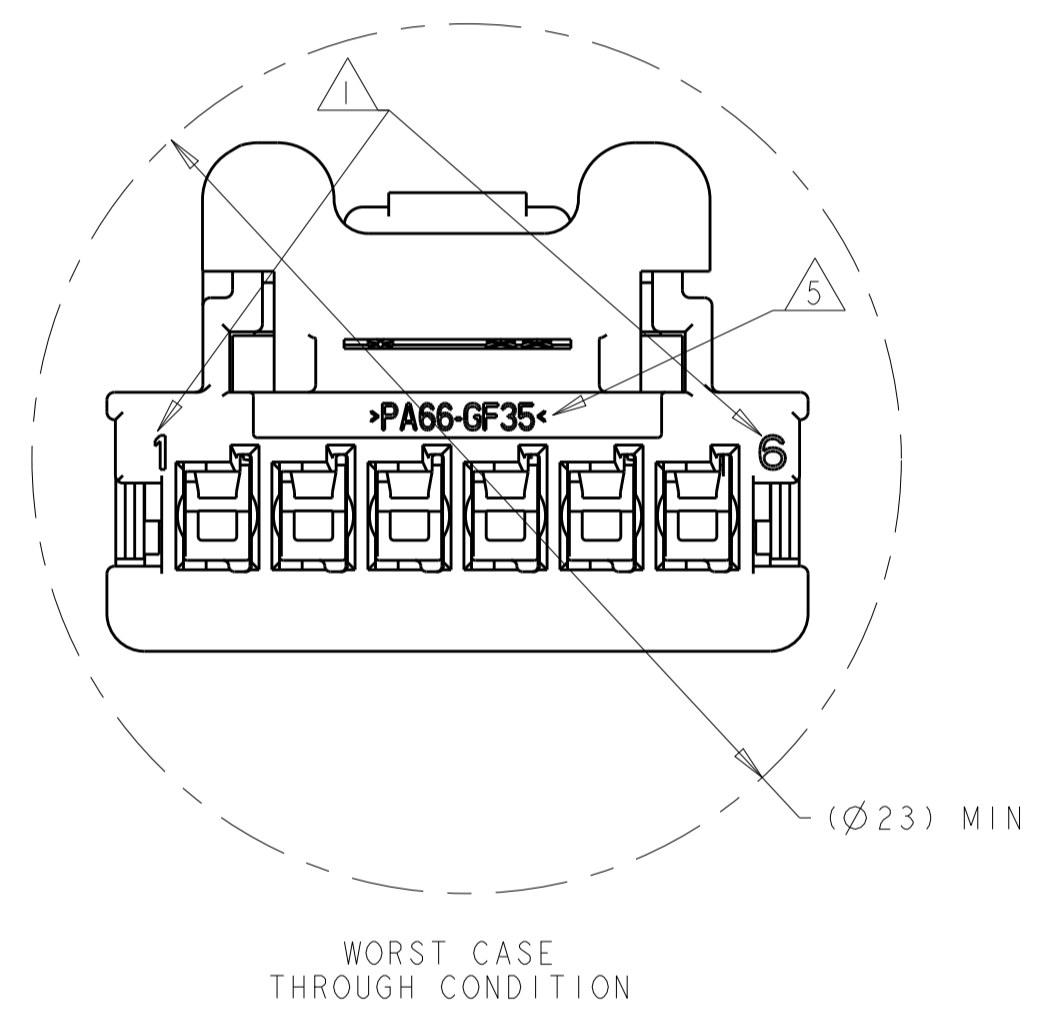
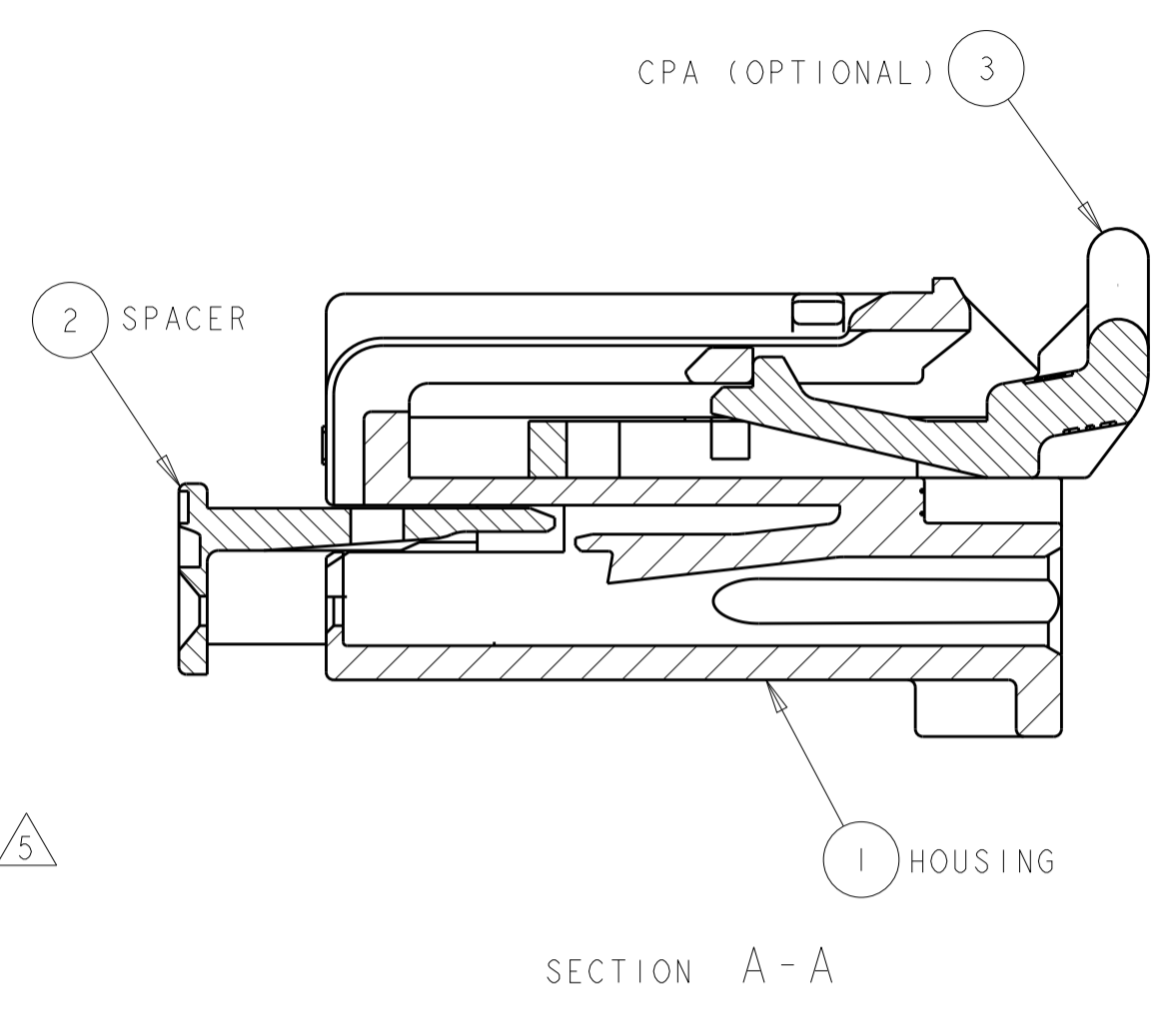
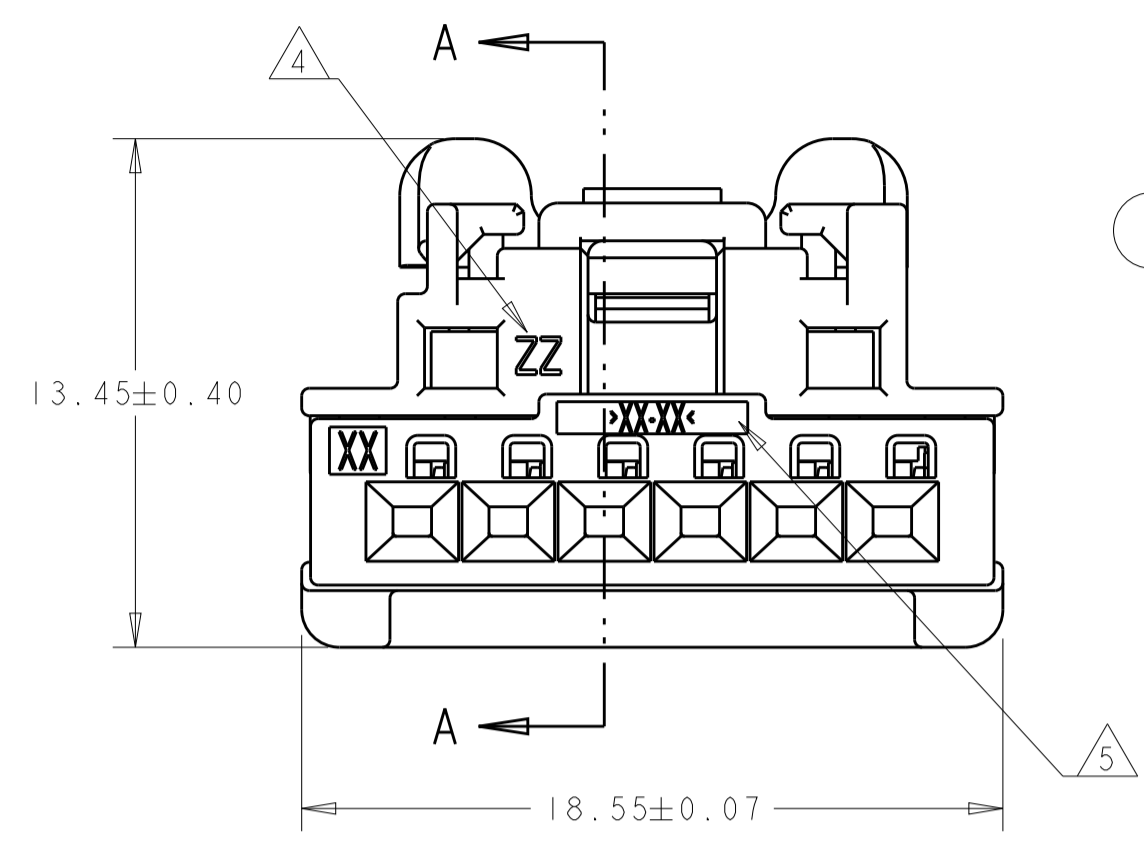
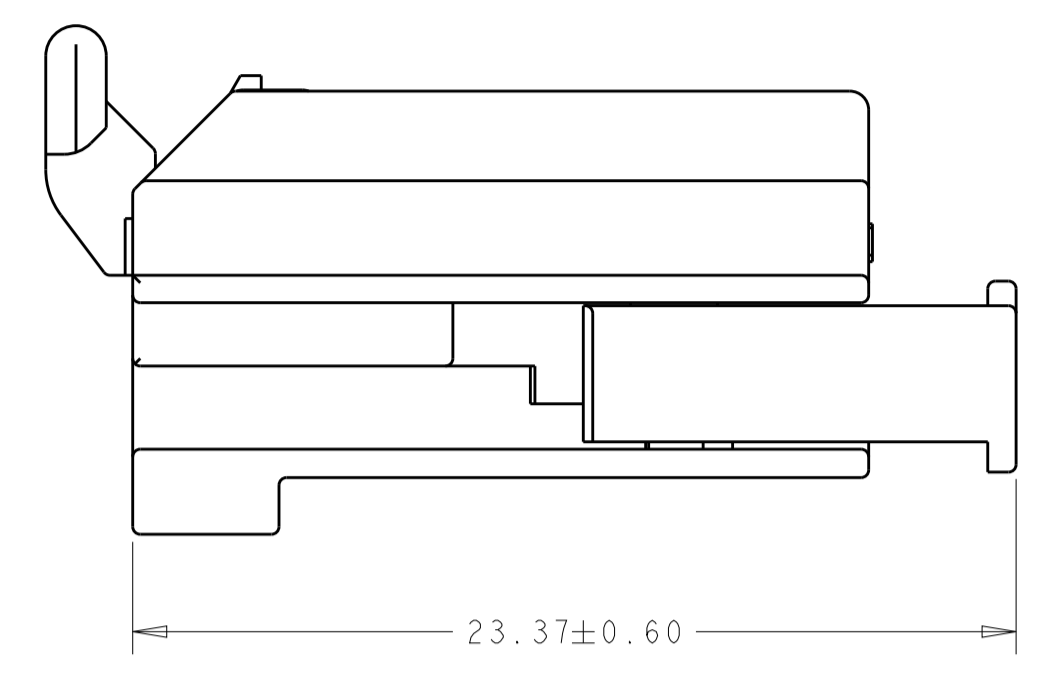


SCALE 2:1

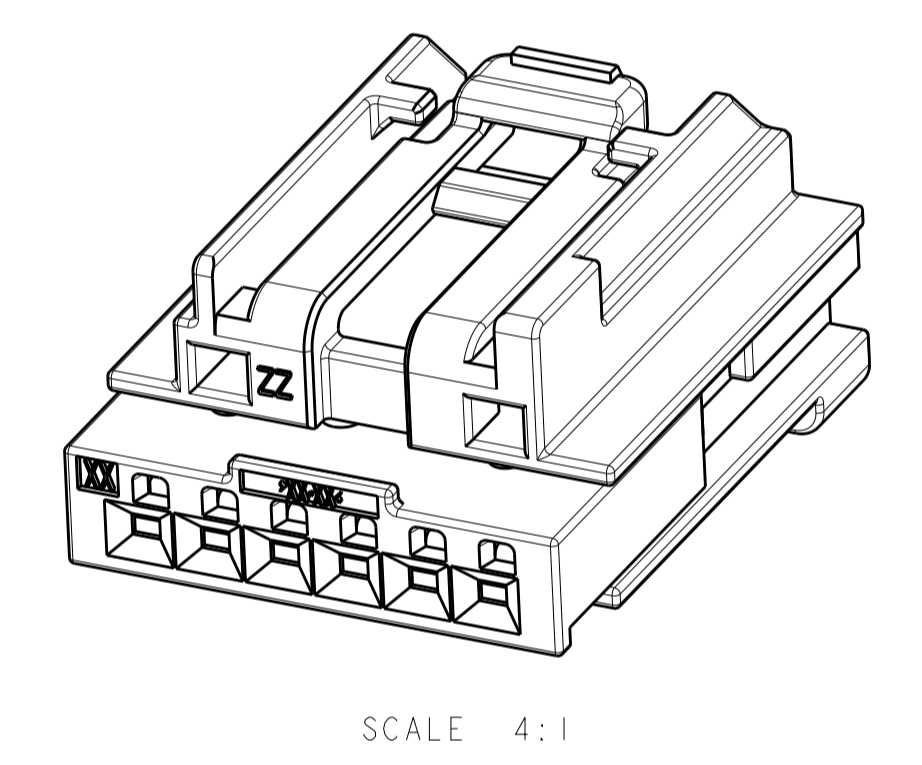
KEYING OPTION: F



SCALE 2:1



- △ CIRCUIT IDENTIFICATION NUMBERS LOCATED AS SHOWN.
- 2. SPACER AND CPA (OPTIONAL) ARE SHIPPED IN PRE-ASSEMBLED POSITION.
- △ DATE CODE; FORMAT: JJJ = JULIAN DAY; Y = YEAR (4TH DIGIT).
- △ MOLD CAVITY IDENTIFICATION.
- △ MATERIAL IDENTIFICATION.
- △ KEYING OPTION B NOT PREFERRED FOR NEW APPLICATIONS.
- 7. PACKAGING: CONNECTOR ASSEMBLIES BULK PACKED IN CARDBOARD BOXES.
- 8. REFERENCE TE INSTRUCTION SHEET 408-32052.



SCALE 4:1

----- ASSEMBLY PART REVISION									
----- ASSEMBLY PN									
QTY REQ'D PER ASSY	REVISION OF EACH ASSY NO (WHEN BLANK, USE DWG REVISION)	DESCRIPTION	MATERIAL	COLOR	ITEM NO				
WEIGHT OF EACH ASSY NO (g)									
1		CPA	>PBT-GF15< >PBT-GF20<	RED	3				
1		SPACER	>PBT+PC-GF30< >PBT-GF30<	RED	2				
1		HOUSING; KEY F	>PA66-GF35<	BLACK	1				
-		HOUSING; KEY E	>PA66-GF35<	BLACK	1				
-		HOUSING; KEY D	>PA66-GF35<	BLACK	1				
-		HOUSING; KEY C	>PA66-GF35<	BLACK	1				
-		HOUSING; KEY B	>PA66-GF35<	BLACK	1				
PARTS LIST									

THIS DRAWING IS A CONTROLLED DOCUMENT.

DIMENSIONS: mm  
 TOLERANCES UNLESS OTHERWISE SPECIFIED:  
 0 PLC ±  
 1 PLC ±  
 2 PLC ±  
 3 PLC ±  
 4 PLC ±  
 ANGLES ±  
 MATERIAL FINISH

DWN: D. DRUMMOND 20APR2012  
 CHK: C. MARTIN 20APR2012  
 APVD: C. MARTIN 20APR2012

**TE** Connectivity  
 NAME: FEMALE ASSEMBLY, 6 POSITION (1X6), UNSEALED, GENERATION Y  
 SIZE: A100779 C=2035363  
 SCALE: 5:1 SHEET 1 OF 1 REV: B4