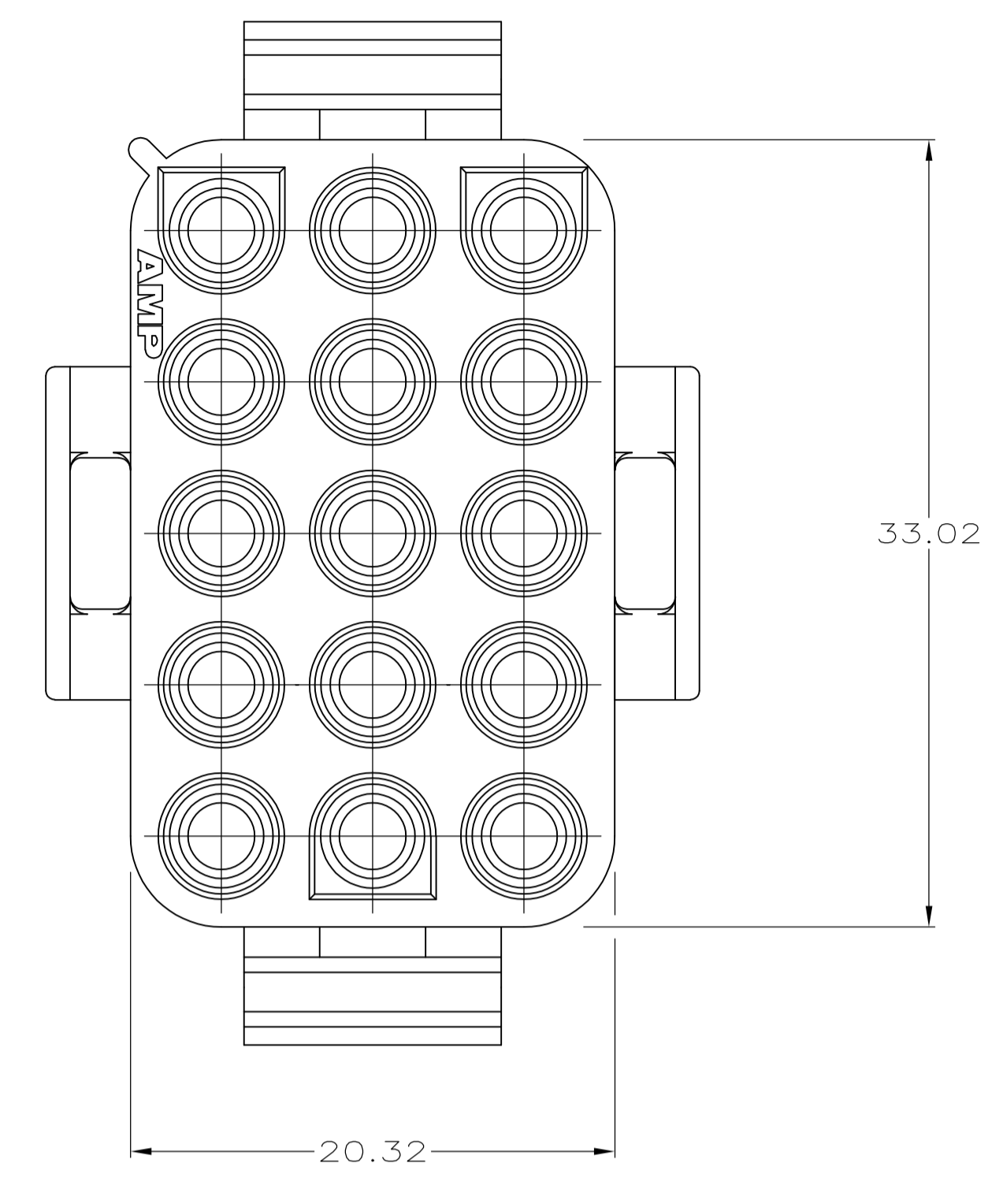
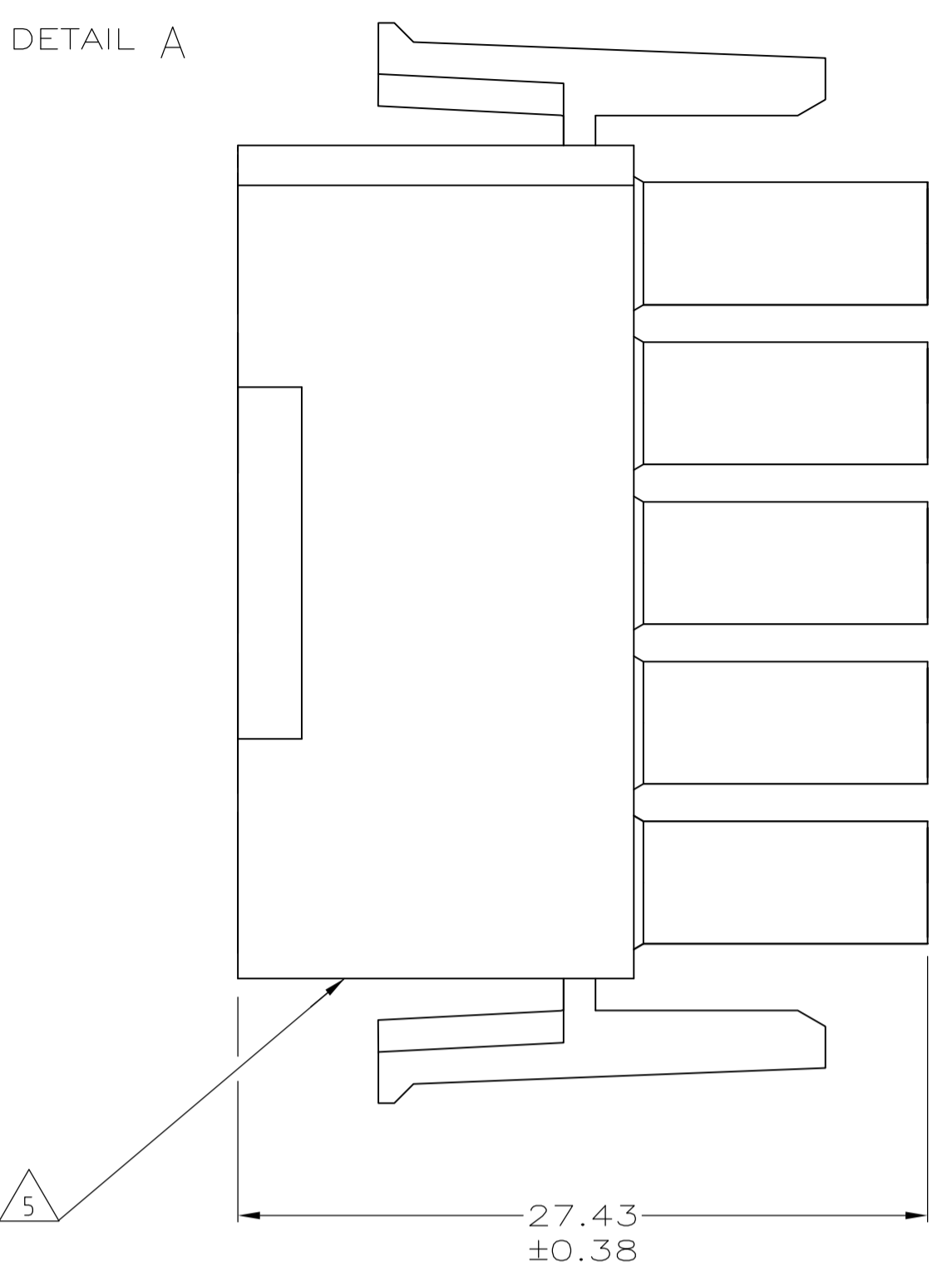
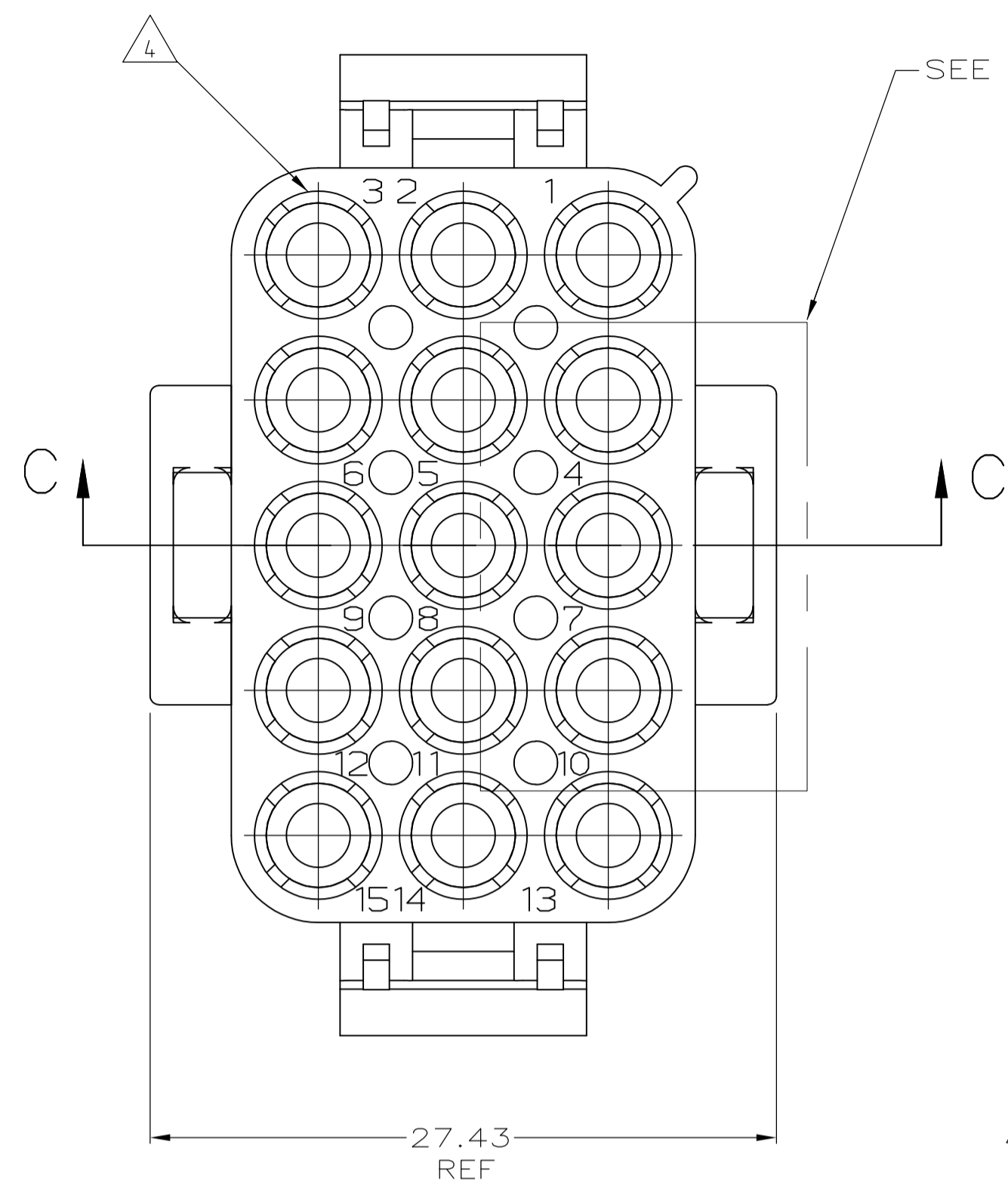
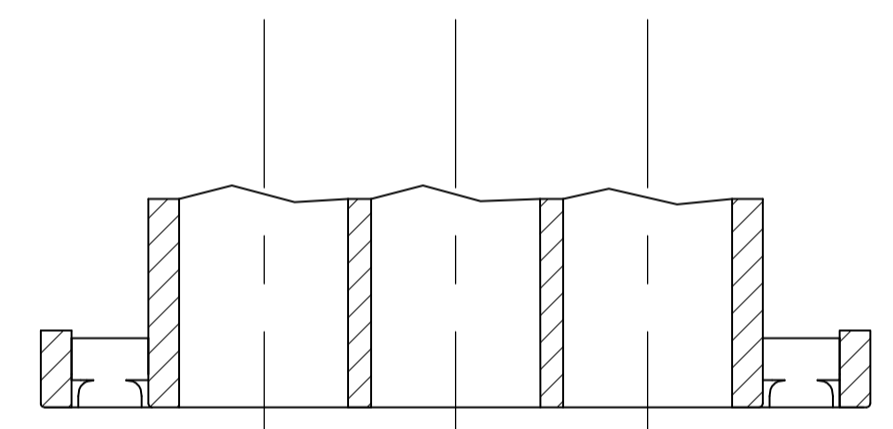


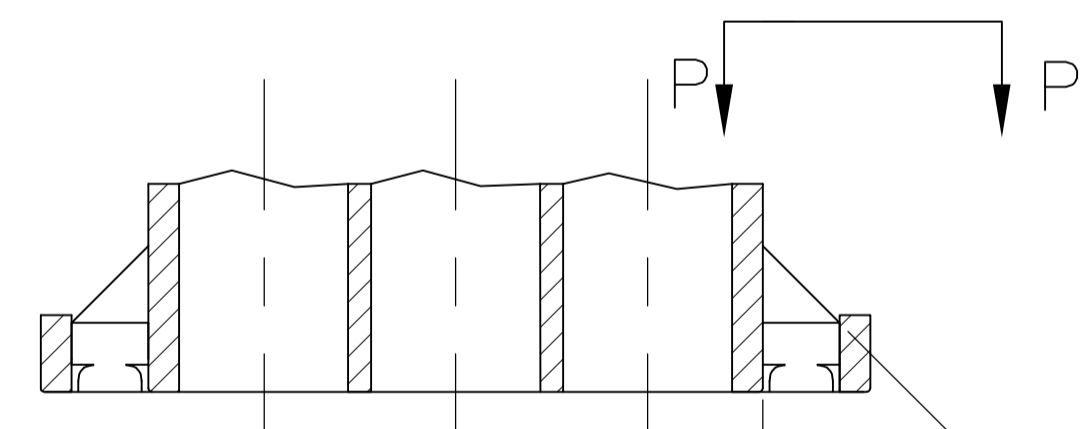
REVISIONS				
P	LTR	DESCRIPTION	DATE	DMN / APVD
B1		REVISED PER ECO-17-011927	22AUG2017	RS / KR



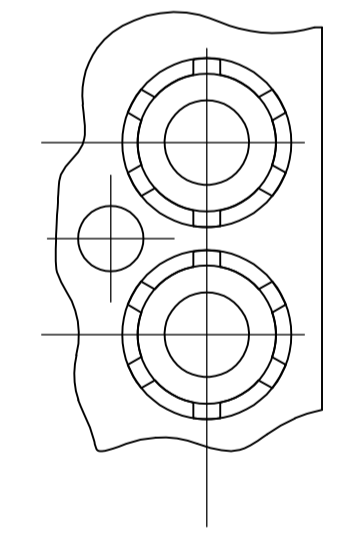
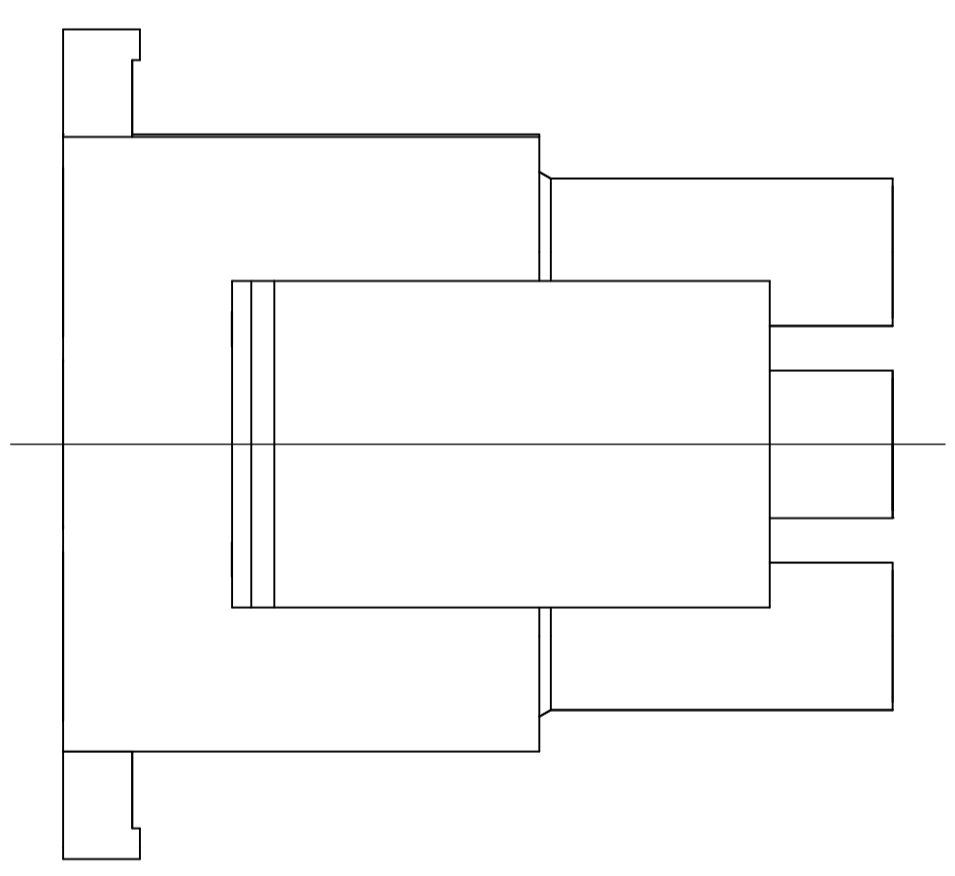
- MATES WITH APPROPRIATE UNIVERSAL MATE-N-LOK™ CAP OR HEADER.
- SMALL NICKS ARE PERMITTED ON THE CIRCUIT TOWERS WHICH COULD INCREASE THE INITIAL HOUSING MATING FORCE BY UP TO 4.4 NEWTONS (1.0 LBS). NO INDIVIDUAL NICKED TOWER SHALL INCREASE THIS FORCE BY OVER 2.2 NEWTONS (.5 LBS).
- DIMENSIONS SHOWN REPRESENT PRODUCT IN DRY, AS MOLDED CONDITION ADDITIONAL 2% GROWTH DUE TO SUBSEQUENT MOISTURE ABSORPTION MAY OCCUR AND SHOULD BE ACCOUNTED FOR.
- FOUR RIBS EQUALLY SPACED, NO SPECIFIC ORIENTATION. SIX RIBS EQUALLY SPACED, NO SPECIFIC ORIENTATION, OPTIONAL.
- UNDERWRITES RECOGNIZED COMPONENT LOGO AND CSA CERTIFICATION LOGO TO BE LOCATED ONCE EACH SIDE OF HOUSING.
- PHOSPHOR BRONZE CONTACTS SHOULD ALWAYS BE USED WITH THIS HOUSING



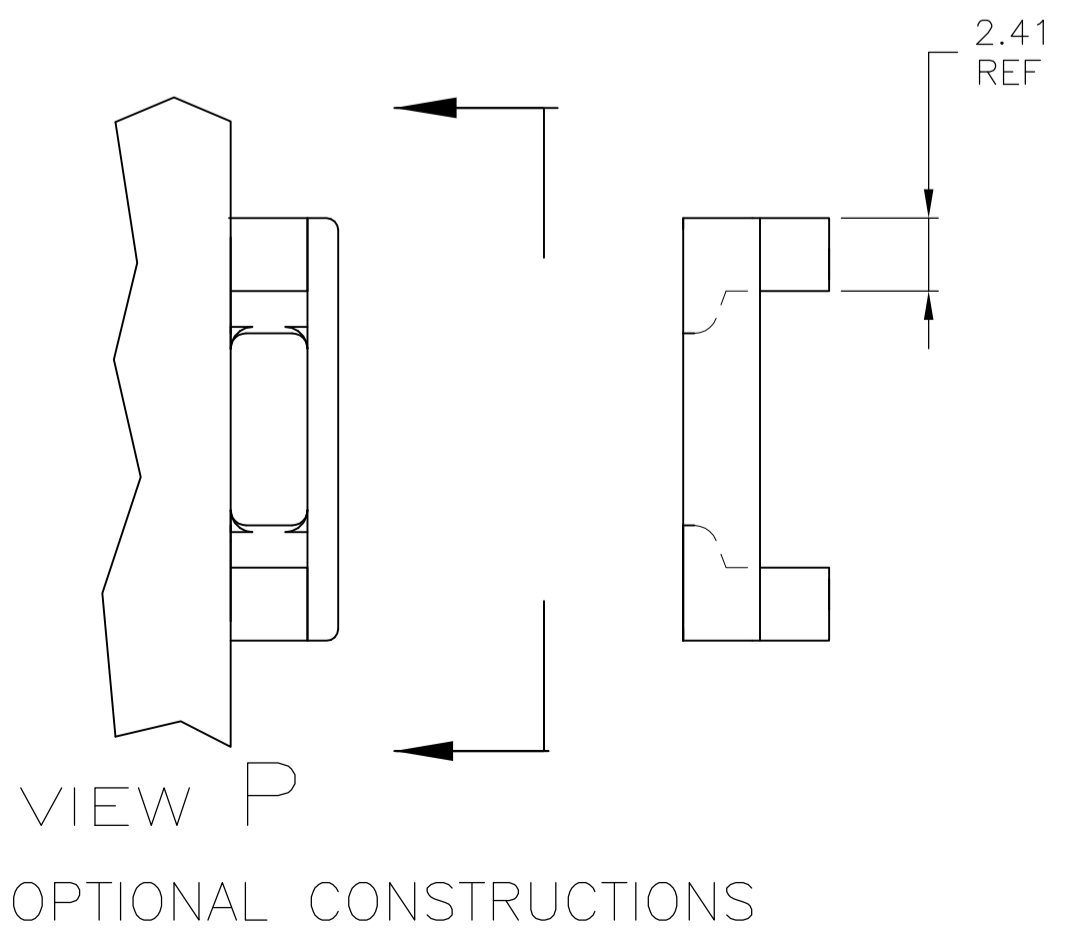
PARTIAL SECTION C-C



PARTIAL SECTION C-C  
OPTIONAL CONSTRUCTION



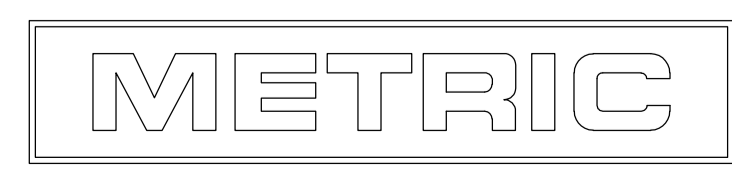
PARTIAL DETAIL A  
OPTIONAL CONSTRUCTIONS



VIEW P  
OPTIONAL CONSTRUCTIONS

MM	IN
33.02	1.300
27.43	1.080
20.32	.800
0.38	.015
0.13	.005
MM	IN

CONVERSION TABLE



THIS DRAWING IS A CONTROLLED DOCUMENT.		DIN L McEACHIN 14-JAN-2000		794546-1 PART NUMBER	
DIMENSIONS: mm		CHK: M TRULL 14-JAN-2000		NAME: PLUG, 15 CIRCUIT, UNIVERSAL MATE-N-LOK™	
TOLERANCES UNLESS OTHERWISE SPECIFIED:		APVD: M TRULL 14-JAN-2000		PRODUCT SPEC: APPLICATION SPEC	
0. PLC ± -		SIZE: A1		CASE CODE: 00779	
1. PLC ± -		DRAWING NO: C=794546		RESTRICTED TO: -	
2. PLC ± 0.13		WEIGHT: 0.000000		SCALE: 4:1	
3. PLC ± -		CUSTOMER DRAWING		SHEET 1 OF 1	
4. PLC ± -		REVISION: B1		REV: -	
ANGLES ± 0° 30'					
FINISH: -					