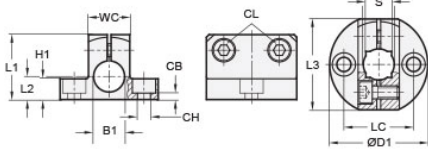




## MT20/20-CB2W-AN

Ruland Two-Way Base Connector, Thru Hole 20mm, Base Diameter 50mm, Black Anodized Aluminum




### Description

Ruland MT20/20-CB2W-AN is a two-way base connector with a 50mm base diameter, 20mm round thru holes, a 16mm square thru hole, M6 clamp screws, and an overall length of 35mm. It is designed to fit with Ruland tubes that begin with MT20. MT20/20-CB2W-AN is aluminum with a black anodized finish and screws are 304 stainless steel for added corrosion resistance when compared to unplated types. This two-way base connector is typically used as a base in support structures for mounting sensors, screens, reflectors, plexiglass machine guards, and other industrial components. It can be permanently installed on extruded aluminum frames, sheet metal, and other surfaces using M6 hardware or the user can opt for portability by using MAGNET-57-36 magnetic base. MT20/20-CB2W-AN can have MT20 round and square tubes installed vertically and/or horizontally giving system designers a high degree of flexibility to customize the base to the needs of applications throughout the equipment. MT20-ALK-M6-30 adjustable clamping handles can be used in place of standard hardware if rapid fine repositioning of the tube is required. MT20/20-CB2W-AN is manufactured by Otto Ganter, inventoried by Ruland, and RoHS3 compliant.

### Product Specifications

<b>Thru Hole 1 Diameter B1</b>	20 mm	<b>Thru Hole 2 Diameter B2</b>	20 mm
<b>Thru Hole Tolerance</b>	+0.13/-0 mm	<b>Thru Hole 2 Tolerance</b>	+0.13/-0 mm
<b>Clamp Width WC</b>	25 mm	<b>Clamp Length L3</b>	44 mm
<b>Base Diameter D1</b>	50 mm	<b>Square Thru Hole S</b>	16 mm
<b>Overall Height H1</b>	35 mm	<b>Center To Center LC</b>	36 mm
<b>Edge To Center L2</b>	12.5 mm	<b>Counterbore Hole CH</b>	M6
<b>Counterbore to Base CB</b>	6.5 mm	<b>Clamp Screw CL</b>	M6
<b>Weight (lbs)</b>	0.167600	<b>Material Specification</b>	Anodized Aluminum
<b>Manufacturer</b>	JW Winco/ Otto Ganter	<b>UPC</b>	634529232200
<b>Country of Origin</b>	Germany	<b>Tariff Code</b>	7609.00.0000
<b>UNSPC</b>	31162908		

**Note 1** Performance ratings are for guidance only. The user must determine suitability for a particular application.

**Prop 65**  **WARNING** This product can expose you to the chemical Nickel (metallic), known to the State of California to cause cancer. For more information go to [www.P65Warnings.ca.gov](http://www.P65Warnings.ca.gov).