

DWG. NO.
SD-57989-001

SIMILAR ITEM

PROJECT NO.

B

DO NOT SCALE DRAWING
DIMENSION IN METRIC

8 7 6 5 4 3 2 1

F

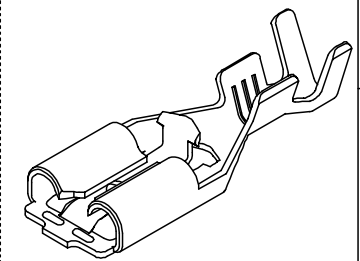
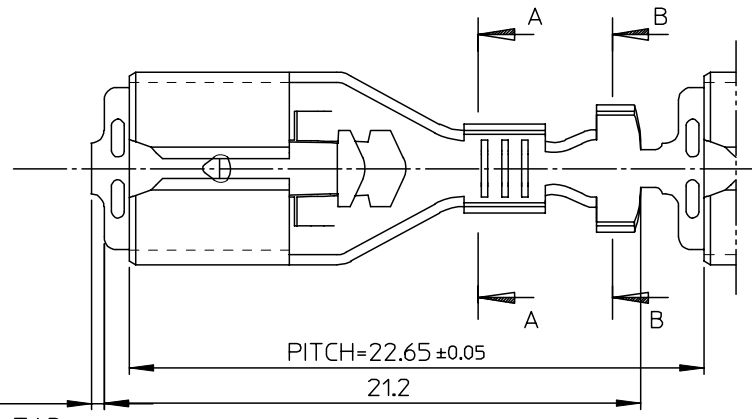
E

D

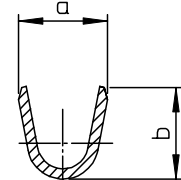
C

B

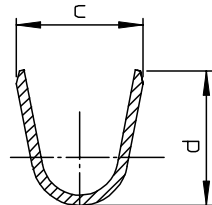
A



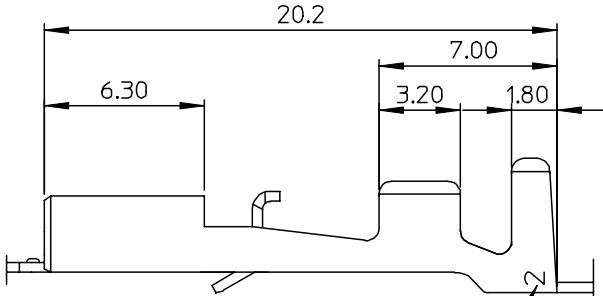
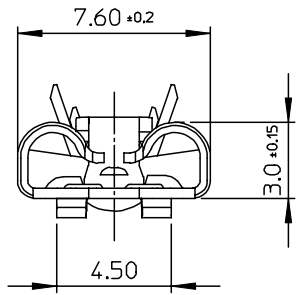
ISOMETRIC VIEW



SECTION D-D



SECTION E-E



MK2
(TRADE MARK)

MATERIAL NO.	ENG NO.	a	b	c	d	WIRE SIZE
579899710	57989-9710	2.7	3.2	4.3	4.7	AWG #22-18
579899810	57989-9810	3.5	3.6	5.0	5.3	AWG #18-14
579899910	57989-9910	4.6	5.3	6.4	6.1	AWG #14-10

NOTES

- MATERIAL : BRASS, 0.4mm THICKNESS
- FINISH : PRE-TIN PLATING
(1.0MICROMETER MIN. TIN OVER 0.3MICROMETER MIN. COPPER)
- MATING TAB : 0.8mmTHICKNESS, 6.35mm WIDTH

NEW RELEASED ECN NO. KOR2003-0193 DRWN: C.B.CHIN 03/01/20 CHK: W.Y.YANG APPR: C.W.LEE	QUALITY SYMBOLS MAJOR $\nabla = 0$ CRITICAL $\nabla C = 0$	GENERAL TOLERANCES: (UNLESS SPECIFIED)		SCALE 5:1	DESIGN UNITS <input checked="" type="checkbox"/> mm <input type="checkbox"/> INCH	THIRD ANGLE PROJECTION <input checked="" type="checkbox"/> THIRD ANGLE <input type="checkbox"/> FIRST ANGLE	DIMENSIONS: <input type="checkbox"/> mm <input type="checkbox"/> INCH <input checked="" type="checkbox"/> mm ONLY	SHT REV REVISE ON CAD ONLY
		4 PLACES $\pm 0.$ mm $\pm -$ INCH	DRAWN BY & DATE C.B.CHIN 02/09/09	TITLE: .250 MP-LOCK REC' TERMINAL FOR SLEEVE				
		3 PLACES $\pm 0.$ mm $\pm -$ INCH	CHECKED BY & DATE W.Y.YANG 02/09/09	MOLEX INCORPORATED				
		2 PLACES ± 0.30 mm $\pm -$ INCH	APPROVED BY & DATE C.W.LEE 02/09/09	CAD FILENAME S57989AA.MI	MATERIAL NO. SEE TABLE	DRAWING NO. SD-57989-001	SHEET NO. 1 OF 1	
1 PLACE ± 0.30 mm $\pm -$ INCH	ANGULAR: $\pm 3^\circ$	DRAFT WHERE APPLICABLE MUST REMAIN WITHIN DIMENSIONS			THIS DRAWING CONTAINS INFORMATION THAT IS PROPRIETARY TO MOLEX INCORPORATED AND SHOULD NOT BE USED WITHOUT WRITTEN PERMISSION.	SIZE B		

8 7 6 5 4 3 2 1 KOREA MX-A3