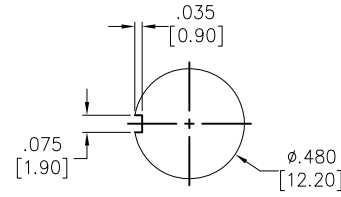
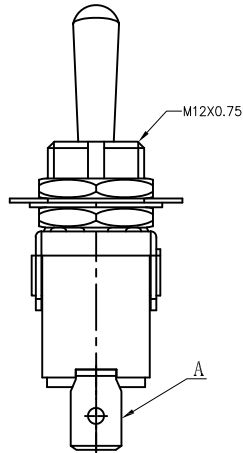
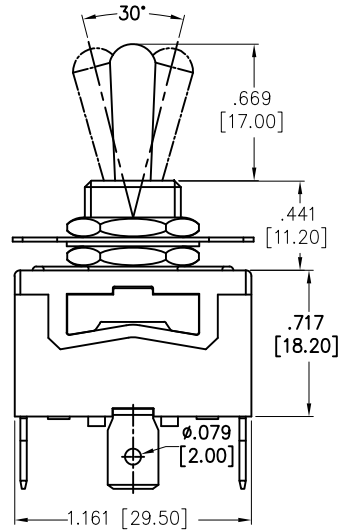
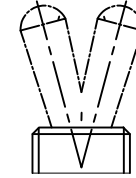


APPROVED: \_\_\_\_\_  
 DATE: \_\_\_\_\_ TITLE: \_\_\_\_\_

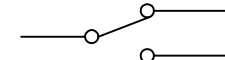
Rev	AWO #	Description	Date	Appr
-		RELEASED	8/10/21	
A		UPDATED DRAWING	6/21/22	JJ/MC
B		UPDATED SPEC	2/9/23	WX/RZ



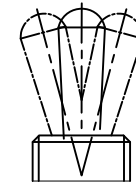
RECOMMENDED  
 PANEL CUT-OUT



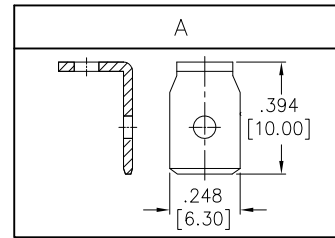
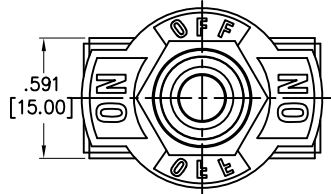
2 WAY



CIRCUIT DIAGRAM  
 (SPDT)



3 WAY



- SW-T1-2X-B-K1
- B=ON-ON
  - D=ON-(ON)
  - E=ON-OFF-ON
  - F=ON-OFF-(ON)
  - G=(ON)-OFF-(ON)

SPECIFICATIONS:

Material:  
 Body: Bakelite, Color: Red Brown **B**  
 Lever: Brass, Nickel plated  
 Terminal: Brass, Silver plated  
 Electrical:  
 Rating: 10A @ 250V AC  
 15A @ 125V AC  
 Contact resistance: 50 mΩ max  
 Insulation resistance: 1000 MΩ min (500VDC)  
 Dielectric withstanding voltage: 1500V AC for 1 minute  
 Electrical Life: 10,000 cycles  
 Temperature Rating:  
 Operating temperature: -25°C to +85°C  
 Environmental:  
 Lead free, RoHS compliant



UNLESS OTHERWISE SPECIFIED ALL DIMENSIONS  
 ARE INCHES [MM]. TOLERANCES: EXCEPT AS NOTED

INCHES		HOLES	
.x	±.10	∅x	±.10
.xx	±.020	∅xx	±.015
.xxx	±.015	∅xxx	±.010



909 Rahway Avenue,  
 Union, NJ 07083  
 Phone: 908-687-5000  
 Fax: 908-687-5710

DRAWN	WX	8/10/21
CHECKED	RC	8/10/21
APPROVED		

TITLE SWITCH, TOGGLE MEDIUM, SPDT,  
 PC TERMINAL .250" [6.35MM]

THIS DRAWING CONTAINS INFORMATION THAT IS PROPRIETARY  
 AND SHOULD NOT BE USED WITHOUT PRIOR WRITTEN  
 PERMISSION FROM ADAM TECH

SIZE X	PART NO. SW-T1-2X-B-K1	REV. B
REF: S00206C	SCALE: NTS	SHEET 1 OF 1