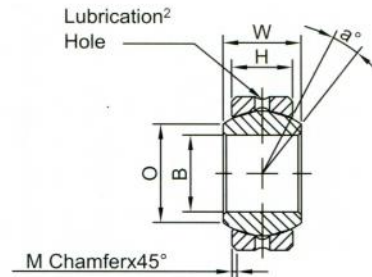
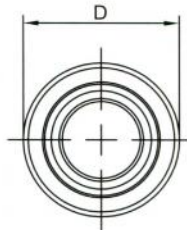


COM8T

COM & HCOM Series Spherical Bearings

(PTFE Liners Available)¹



Part No.	DIMENSIONS IN INCHES							a° Misalign. Angle	Radial Static Load Capacity Lbs.	Approx Brg. Wt. Lbs.
	B +.0015 -.0005	D +0.0000 -0.0007	H ±0.005	W ±0.005	O Flat Dia. Ref.	M Chamfer Ref.	Ball Dia. Ref.			
COM-3	.1900	.5625	.218	.281	.293	.015	.406	11	3,250	.014
COM-4	.2500	.6562	.250	.343	.364	.022	.500	13.5	4,950	.022
COM-5	.3125	.7500	.281	.375	.419	.032	.562	12	6,475	.030
COM-6	.3750	.8125	.312	.406	.516	.032	.656	10	8,400	.038
COM-7	.4375	.9062	.343	.437	.530	.032	.687	8	9,453	.047
<u>COM-8</u>	.5000	1.0000	.390	.500	.640	.032	.813	9.5	13,250	.065
COM-9	.5625	1.0937	.437	.562	.710	.032	.906	9.5	16,630	.086
COM-10	.6250	1.1875	.500	.625	.780	.032	1.000	8.5	21,280	.110
COM-12	.7500	1.4375	.593	.750	.920	.044	1.187	9	31,920	.204
COM-14	.8750	1.5625	.703	.875	.980	.044	1.312	9.5	41,960	.263
*COM-16	1.0000	1.7500	.797	1.000	1.118	.044	1.500	10	55,200	.386
*HCOM-16	1.0000	2.0000	.781	1.000	1.360	.032	1.687	9	70,820	.553
*HCOM-19	1.1875	2.3750	.937	1.187	1.610	.032	2.000	8.5	100,730	.895
*HCOM-20	1.2500	2.3750	.937	1.187	1.610	.032	2.000	8.5	100,730	.895
*HCOM-24	1.5000	2.7500	1.094	1.375	1.860	.032	2.312	8.5	135,950	1.358
*HCOM-28	1.7500	3.1250	1.250	1.562	2.110	.044	2.625	8	176,370	1.948
*HCOM-32	2.0000	3.5000	1.375	1.750	2.360	.044	2.937	8.5	217,060	2.650

*Bore tolerance on these items is As follows-
INCH +.0025,-.0005.

Note:1.PTFE liners use suffix T Ex COM-10T.

2.PTFE liners have no lubrication holes or groove in race .

Specifications

Race -Carbon steel, protective coated for corrosion resistance.

Ball -Bearing steel,heat treated,hard chrome plated.