



# Application Note

## AN\_327

# EVE Screen Editor Installation Instructions

**Version 1.0**

**Issue Date: 2014-06-10**

The EVE screen editor is a windows based tool designed to allow EVE (FT800 series) customers experiment with creating display lists to control the EVE graphics controller within a windows environment. This application note explains how to install the tool.

Use of FTDI devices in life support and/or safety applications is entirely at the user's risk, and the user agrees to defend, indemnify and hold FTDI harmless from any and all damages, claims, suits or expense resulting from such use.

**Future Technology Devices International Limited (FTDI)**

Unit 1, 2 Seaward Place, Glasgow G41 1HH, United Kingdom

Tel.: +44 (0) 141 429 2777 Fax: + 44 (0) 141 429 2758

Web Site: <http://ftdichip.com>

Copyright © 2014 Future Technology Devices International Limited



## **Table of Contents**

<b>1 Introduction .....</b>	<b>2</b>
<b>2 Prerequisite.....</b>	<b>3</b>
<b>3 Installation steps .....</b>	<b>4</b>
<b>4 Contact Information .....</b>	<b>8</b>
<b>Appendix A – References .....</b>	<b>9</b>
<b>Appendix B – Revision History .....</b>	<b>10</b>



## **1 Introduction**

The EVE screen editor is a windows based tool designed to allow EVE (FT800 series) customers experiment with creating display lists to control the EVE graphics controller within a windows environment.

The tool may also be used to access EVE hardware such as the VM800C and VM800B via the FTDI MPSSE cable: C232HM-DDHSL-0 or VA800A-SPI bridge board, without actually writing code.

This application note explains how to install the tool. Further help on using the tool is embedded online in the tool.

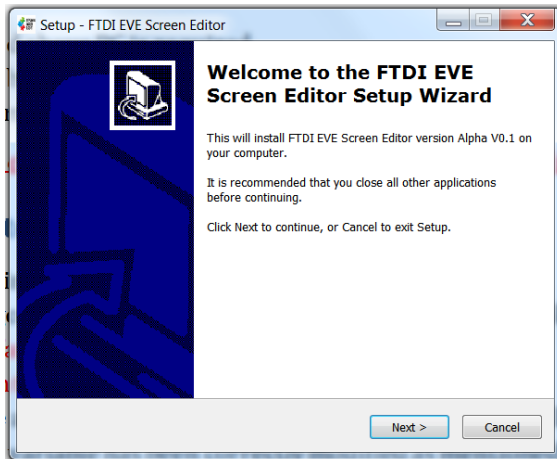
## 2 Prerequisite

The following system capabilities are required to install and operate the EVE Screen Editor tool

- Windows 7 and above PC is required
- At least 60M bytes free disk space
- Administrator privileges to run this setup package

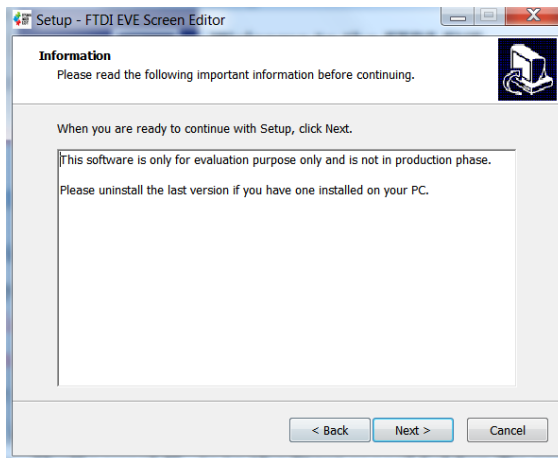
### 3 Installation steps

Double click the installation package "FTDI EVE Screen Editor.exe", the setup wizard will be launched.



Click the Next button.

The information dialogue window shall be displayed which the user should read before proceeding.

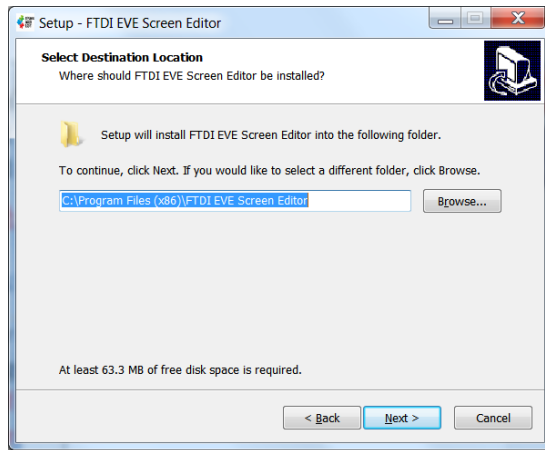


Click the Next button.

The user can specify the installation path here by clicking on Browse and selecting the installation folder.

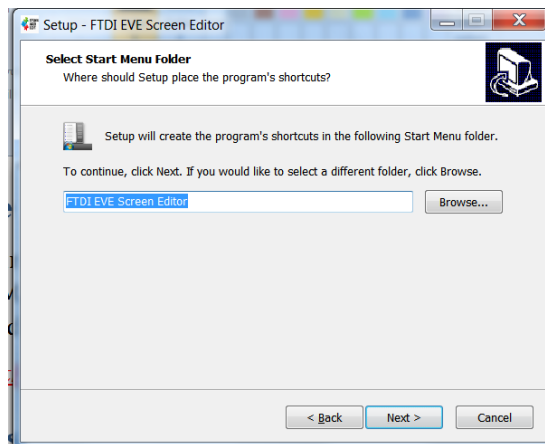
The default installation path is C:\Program Files(x86)\FTDI EVE Screen Editor

**Note: the user will require full read/write access to the selected path.**



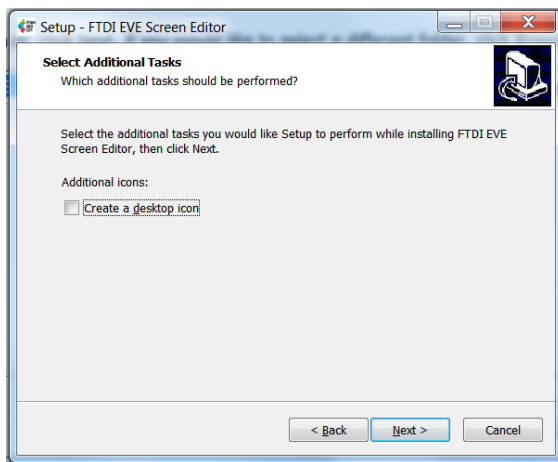
Click the Next button.

In the next pop up screen the user can select the start menu folder for the application.



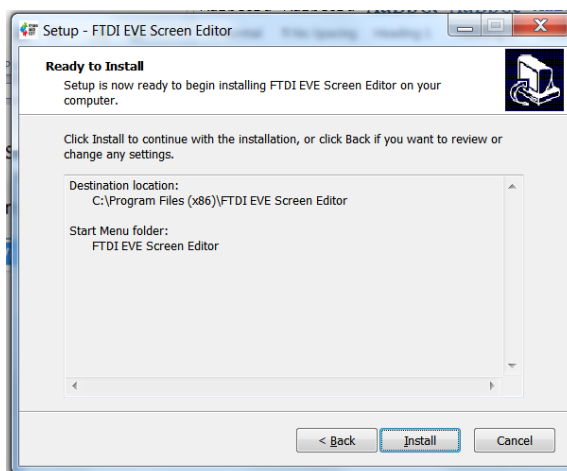
Click the Next button.

The user may select to create a desktop icon here.



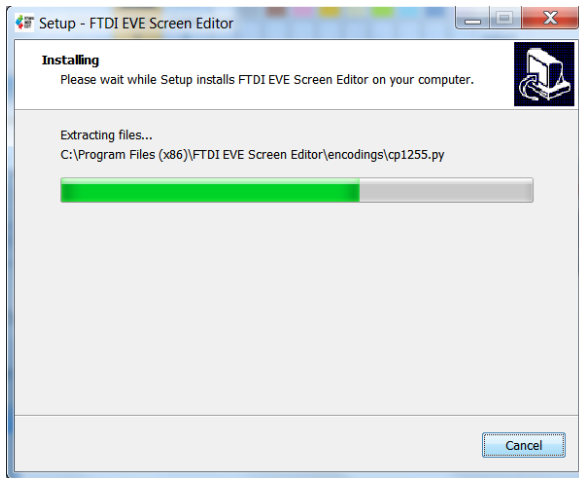
Click the Next button.

A summary of the user's selections shall be shown.

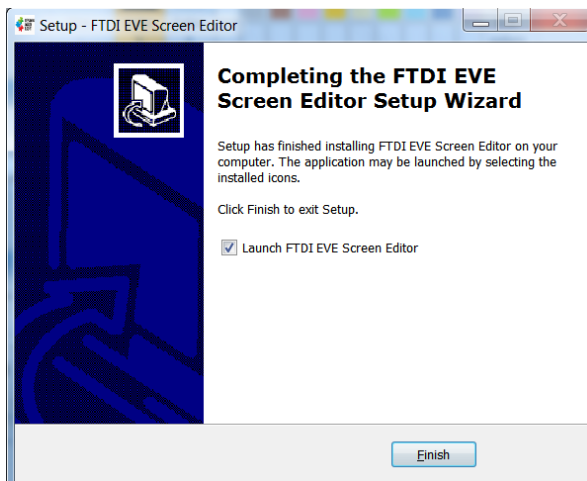


Click the Next button.

Installation is started!

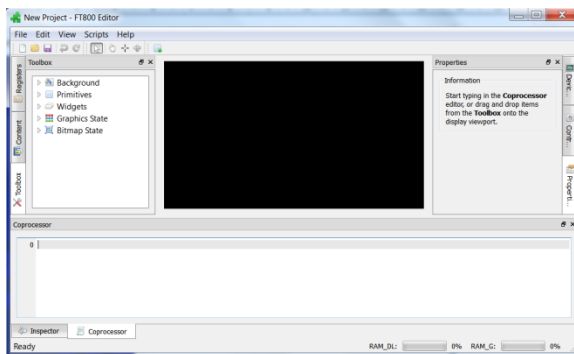


The progress bar will update as the installation proceeds, until completion when a final pop up window is displayed.



Click Finish.

If the checkbox "Launch FTDI EVE Screen Editor" is not cleared, the application will be launched automatically as below:





## 4 Contact Information

### Head Office – Glasgow, UK

Future Technology Devices International Limited  
Unit 1, 2 Seaward Place, Centurion Business Park  
Glasgow G41 1HH  
United Kingdom  
Tel: +44 (0) 141 429 2777  
Fax: +44 (0) 141 429 2758

E-mail (Sales) [sales1@ftdichip.com](mailto:sales1@ftdichip.com)  
E-mail (Support) [support1@ftdichip.com](mailto:support1@ftdichip.com)  
E-mail (General Enquiries) [admin1@ftdichip.com](mailto:admin1@ftdichip.com)

### Branch Office – Tigard, Oregon, USA

Future Technology Devices International Limited  
(USA)  
7130 SW Fir Loop  
Tigard, OR 97223-8160  
USA  
Tel: +1 (503) 547 0988  
Fax: +1 (503) 547 0987

E-Mail (Sales) [us.sales@ftdichip.com](mailto:us.sales@ftdichip.com)  
E-Mail (Support) [us.support@ftdichip.com](mailto:us.support@ftdichip.com)  
E-Mail (General Enquiries) [us.admin@ftdichip.com](mailto:us.admin@ftdichip.com)

### Branch Office – Taipei, Taiwan

Future Technology Devices International Limited  
(Taiwan)  
2F, No. 516, Sec. 1, NeiHu Road  
Taipei 114  
Taiwan, R.O.C.  
Tel: +886 (0) 2 8791 3570  
Fax: +886 (0) 2 8791 3576

E-mail (Sales) [tw.sales1@ftdichip.com](mailto:tw.sales1@ftdichip.com)  
E-mail (Support) [tw.support1@ftdichip.com](mailto:tw.support1@ftdichip.com)  
E-mail (General Enquiries) [tw.admin1@ftdichip.com](mailto:tw.admin1@ftdichip.com)

### Branch Office – Shanghai, China

Future Technology Devices International Limited  
(China)  
Room 1103, No. 666 West Huaihai Road,  
Shanghai, 200052  
China  
Tel: +86 21 62351596  
Fax: +86 21 62351595

E-mail (Sales) [cn.sales@ftdichip.com](mailto:cn.sales@ftdichip.com)  
E-mail (Support) [cn.support@ftdichip.com](mailto:cn.support@ftdichip.com)  
E-mail (General Enquiries) [cn.admin@ftdichip.com](mailto:cn.admin@ftdichip.com)

### Web Site

<http://ftdichip.com>

System and equipment manufacturers and designers are responsible to ensure that their systems, and any Future Technology Devices International Ltd (FTDI) devices incorporated in their systems, meet all applicable safety, regulatory and system-level performance requirements. All application-related information in this document (including application descriptions, suggested FTDI devices and other materials) is provided for reference only. While FTDI has taken care to assure it is accurate, this information is subject to customer confirmation, and FTDI disclaims all liability for system designs and for any applications assistance provided by FTDI. Use of FTDI devices in life support and/or safety applications is entirely at the user's risk, and the user agrees to defend, indemnify and hold harmless FTDI from any and all damages, claims, suits or expense resulting from such use. This document is subject to change without notice. No freedom to use patents or other intellectual property rights is implied by the publication of this document. Neither the whole nor any part of the information contained in, or the product described in this document, may be adapted or reproduced in any material or electronic form without the prior written consent of the copyright holder. Future Technology Devices International Ltd, Unit 1, 2 Seaward Place, Centurion Business Park, Glasgow G41 1HH, United Kingdom. Scotland Registered Company Number: SC136640

## Appendix A – References

### Document References

[EVE Products](#)

[FT800 Datasheet](#)

[FT800 Programming Guide](#)

[AN\\_240 FT800 From the Ground Up](#)

### Acronyms and Abbreviations

Terms	Description
EVE	Embedded Video Engine
MPSSE	Multi Purpose Synchronous Serial Engine

## Appendix B – Revision History

Document Title: AN\_327 EVE Screen Editor Installation Instructions  
Document Reference No.: FT\_001056  
Clearance No.: FTDI# 394  
Product Page: <http://www.ftdichip.com/EVE.htm>  
Document Feedback: [Send Feedback](#)

Revision	Changes	Date
1.0	Initial Release	2014-06-10