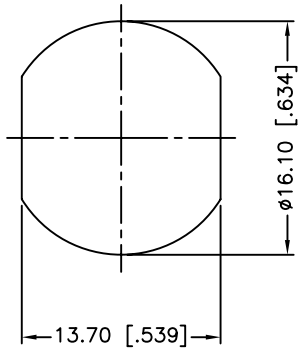
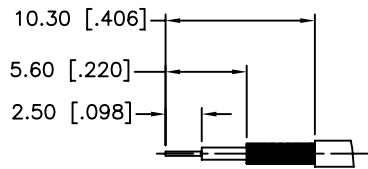


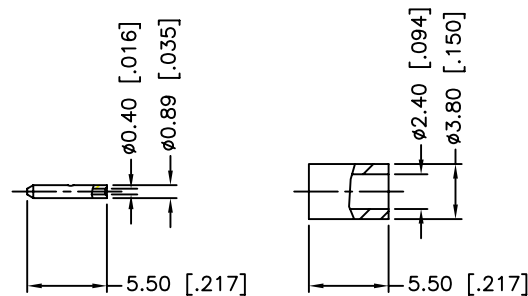
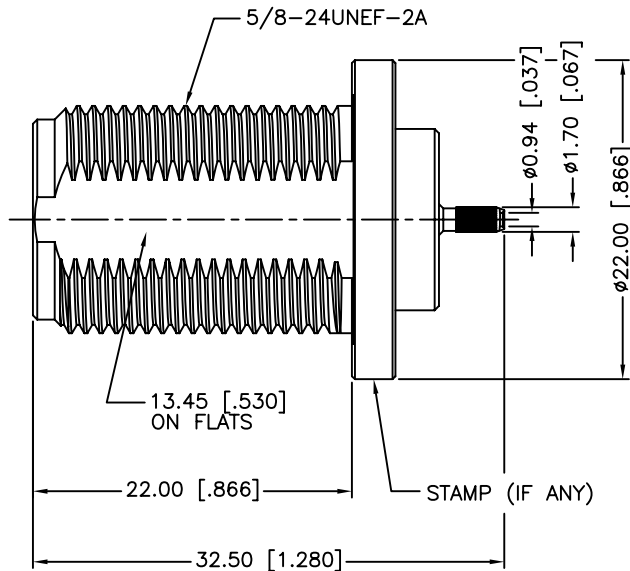
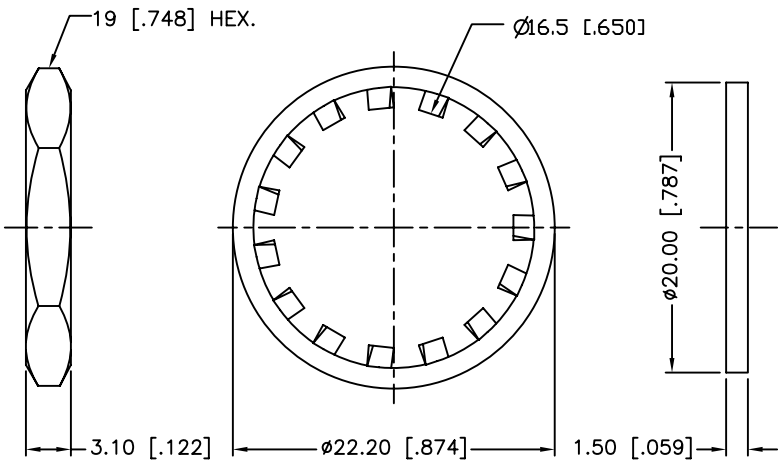
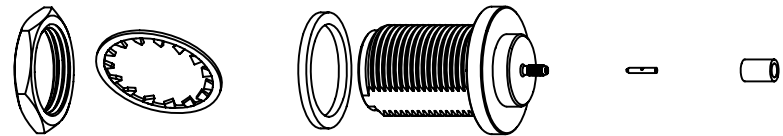
REV.	DATE	ECR NO.	DESCRIPTION
NC	04/29/04	XXXXXX	INITIAL RELEASE
A	08/31/12	2359	UPDATE DRAWING FORMAT, IMPROVE ELECTRICAL PERFORMANCE, MODIFY CRIMP TOOL



RECOMMENDED MOUNTING HOLE DIM'S



RECOMMENDED CABLE STRIPPING DIM'S



1. IMPEDANCE: 50 OHM
2. FREQUENCY RANGE: DC - 2.5 GHz
3. VSWR (RETURN LOSS): 1.2 MAX. @ 0-2.5 GHz
1.4 MAX. @ 2.5-6 GHz
4. DIELECTRIC WITHSTANDING VOLTAGE: 1500 VRMS MIN.
5. DURABILITY: 500 CYCLES MIN.
6. TEMPERATURE RANGE: -65°C TO +165°C
7. CRIMPED FERRULE
HEX CRIMP SIZE .128"
8. CONTACT PIN CAN BE SOLDERED
OR USE 4-WAY INDENT TOOL #47025
9. MAX. PANEL THICKNESS=6.5mm

QTY	DESCRIPTION	MATERIAL	FINISH
1	FERRULE	COPPER	NEXCOTE
1	CONTACT PIN	BRASS	GOLD
1	HEX NUT	BRASS	NEXCOTE
1	LOCK WASHER	BRASS	NEXCOTE
1	GASKET	SILICON RUBBER	RED
1	BARREL	BRASS	NEXCOTE
1	CONTACT PIN	PHOSPHOR BRONZE	GOLD
1	INSULATOR	PTFE	NATURAL
1	BODY	BRASS	NEXCOTE

UNLESS OTHERWISE SPECIFIED DIMENSIONS ARE IN MILLIMETERS. DIMENSIONS IN [] ARE IN INCHES AND FOR CUSTOMER REFERENCE ONLY.

UNLESS OTHERWISE SPECIFIED TOLERANCES FOR MILLIMETERS ARE:
0.5 - 8mm ± 0.20mm
8 - 30mm ± 0.40mm
30 - 120mm ± 0.50mm

UNLESS OTHERWISE SPECIFIED TOLERANCES FOR INCHES ARE:
.020 - .315 = ± 0.007"
.315 - 1.180 = ± 0.015"
1.180 - 4.724 = ± 0.020"

DO NOT SCALE DRAWING

APPROVALS	DATE
DRAWN M.ZHANG	08/31/12
CHECKED	
ISSUED	
SHEET 1 OF 1	
CAD FILE C:/CONNEX/172313.DWG	

Amphenol Connex

PART DESCRIPTION
**N BULKHEAD CRIMP JACK
(FOR RG-178B/U, RG-196A/U CABLE)**

PART NO.
172313

DWG. NO. 172313.DWG REV. A SIZE A SCALE NA