

# Panel feed-through - SACC-5P-DSI-M12MS/FS-M16 - 1551671

Please be informed that the data shown in this PDF Document is generated from our Online Catalog. Please find the complete data in the user's documentation. Our General Terms of Use for Downloads are valid (<http://download.phoenixcontact.com>)



Sensor/actuator control cabinet feed-through, male to female, 5-pos., M12, shielded, A-coded, bipolar/screw mounting with M16 thread



## Key commercial data

Packing unit	0
Minimum order quantity	1
Catalog page	Page 63 (PC-2011)
GTIN	 4 046356 156226
Custom tariff number	85366990
Country of origin	CZECH REPUBLIC

## Technical data

### General data

Rated current at 40°C	4 A
Rated voltage	24 V
Number of positions	5
Volume resistance	≤ 3 mΩ
Insulation resistance	≥ 100 MΩ
Ambient temperature (operation)	-25 °C ... 85 °C (Male connector / female connector)

### General characteristics

Standards/regulations	M12 plug-in connector IEC 61076-2-101
Coding	A - standard
Surge voltage category	II
Pollution degree	3
Degree of protection	IP67
Contact material	CuZn
Contact surface material	Au
Contact carrier material	PA 66
Material, knurls	Nickel-plated brass
Sealing material	NBR

# Panel feed-through - SACC-5P-DSI-M12MS/FS-M16 - 1551671

## Technical data

### General characteristics

Mounting type	Bipolar mounting M16 x 1.5
Status display	No

## Classifications

### eclass

eCl@ss 4.0	27250313
eCl@ss 4.1	27250313
eCl@ss 5.0	27143423
eCl@ss 5.1	27143423
eCl@ss 6.0	27143423
eCl@ss 7.0	27449001

### etim

ETIM 3.0	EC002061
ETIM 4.0	EC002061

### unspsc

UNSPSC 6.01	31251501
UNSPSC 7.0901	31251501
UNSPSC 11	31251501
UNSPSC 12.01	31251501
UNSPSC 13.2	31251501

## Approvals

### Approvals

---

Approvals

GOST

---

Ex Approvals

---

Approvals submitted

---

### Approval details

GOST
------

# Panel feed-through - SACC-5P-DSI-M12MS/FS-M16 - 1551671

## Accessories

### Accessories

#### Protection and sealing elements

##### Screw plug - PROT-M12 - 1680539



An M12 screw plug for the unoccupied M12 sockets of the sensor/actuator cable, boxes and flush-type connectors

##### Sealing cap - PROT-M12 FS - 1560251



M12 sealing cap for unoccupied M12 connectors of the sensor/actuator cable, flush-type connectors and I/O devices in the field

##### Screw plug - PROT-M12 SH - 1503302



An M12 screw plug for the unoccupied M12 sockets of the shielded sensor/actuator cable, boxes and flush-type connectors

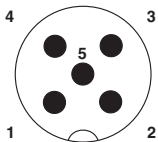
##### Sealing cap - PROT-M12 FS-M - 1430488



M12 metal sealing cap for unoccupied M12 connectors of the sensor/actuator cable, flush-type connectors and I/O devices in the field

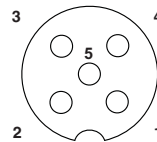
## Drawings

### Schematic diagram



Pin assignment M12 male connector, 5-pos., A-coded, male side

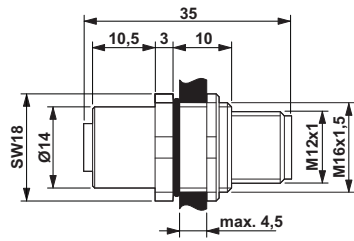
### Schematic diagram



Pin assignment M12 socket, 5-pos., A-coded, socket side view

# Panel feed-through - SACC-5P-DSI-M12MS/FS-M16 - 1551671

Dimensioned drawing



Circuit diagram



Contact assignment of the M12 plug and the M12 socket

# Panel feed-through - SACC-5P-DSI-M12MS/FS-M16 - 1551671

Dimensioned drawing

