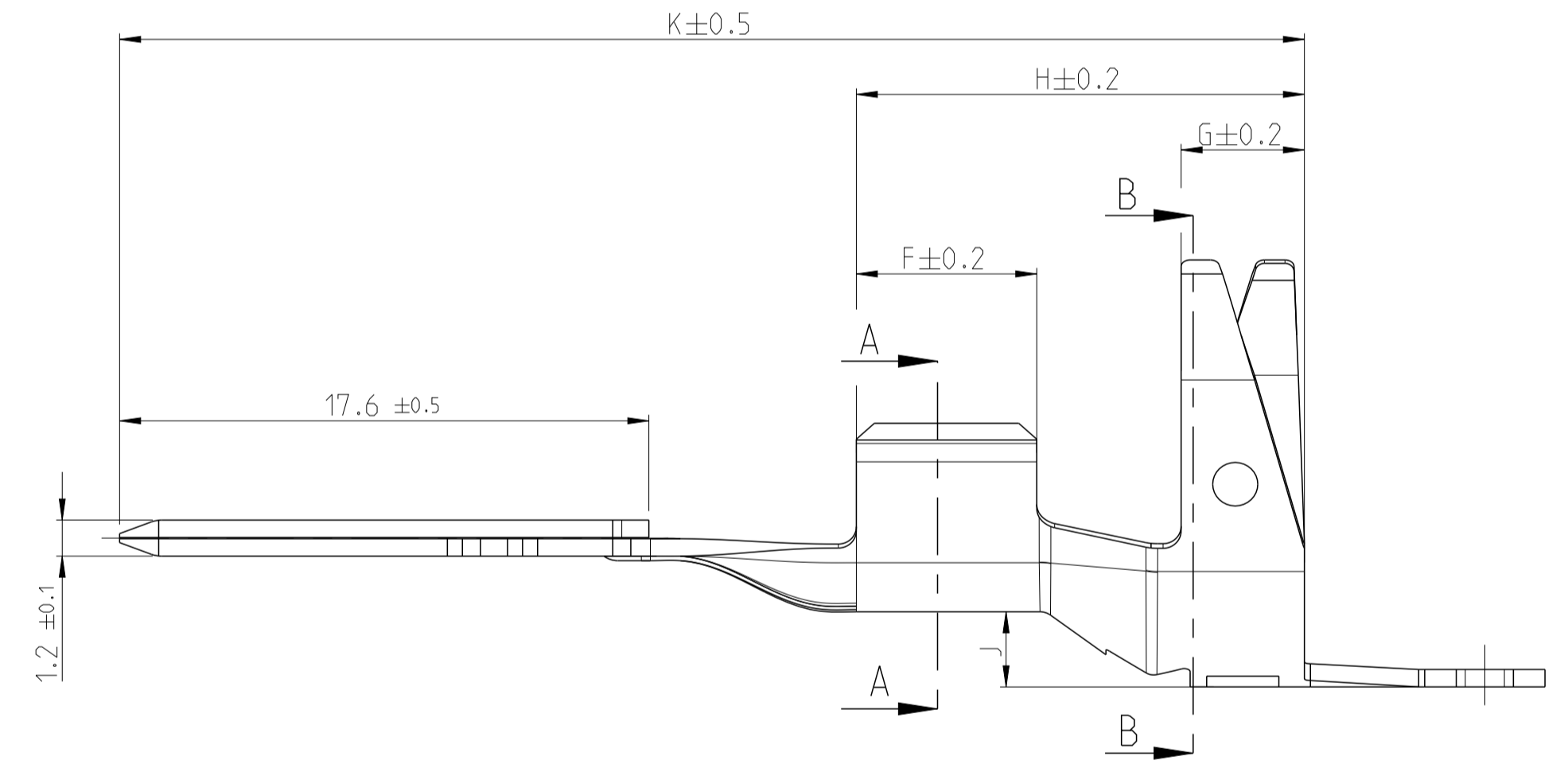
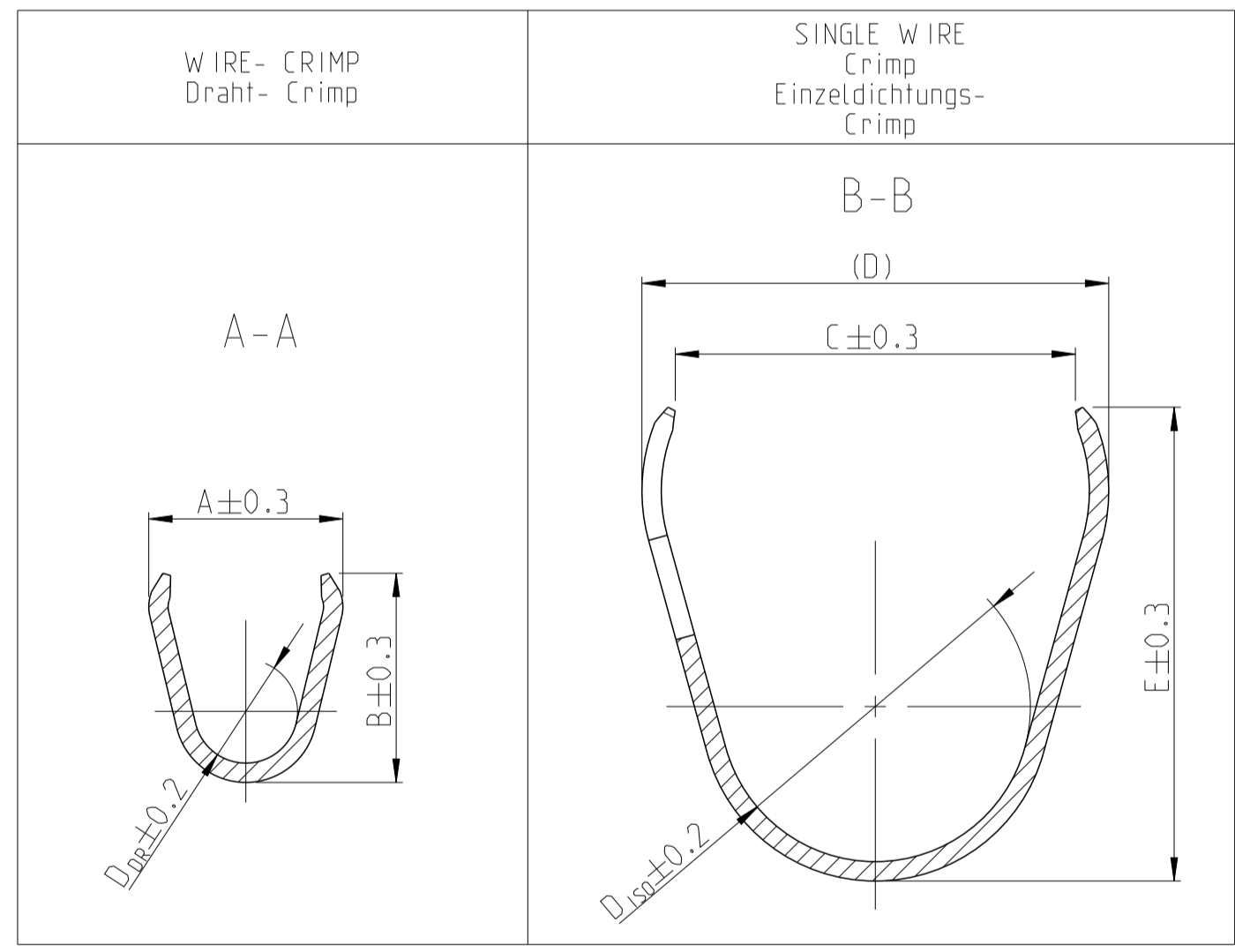
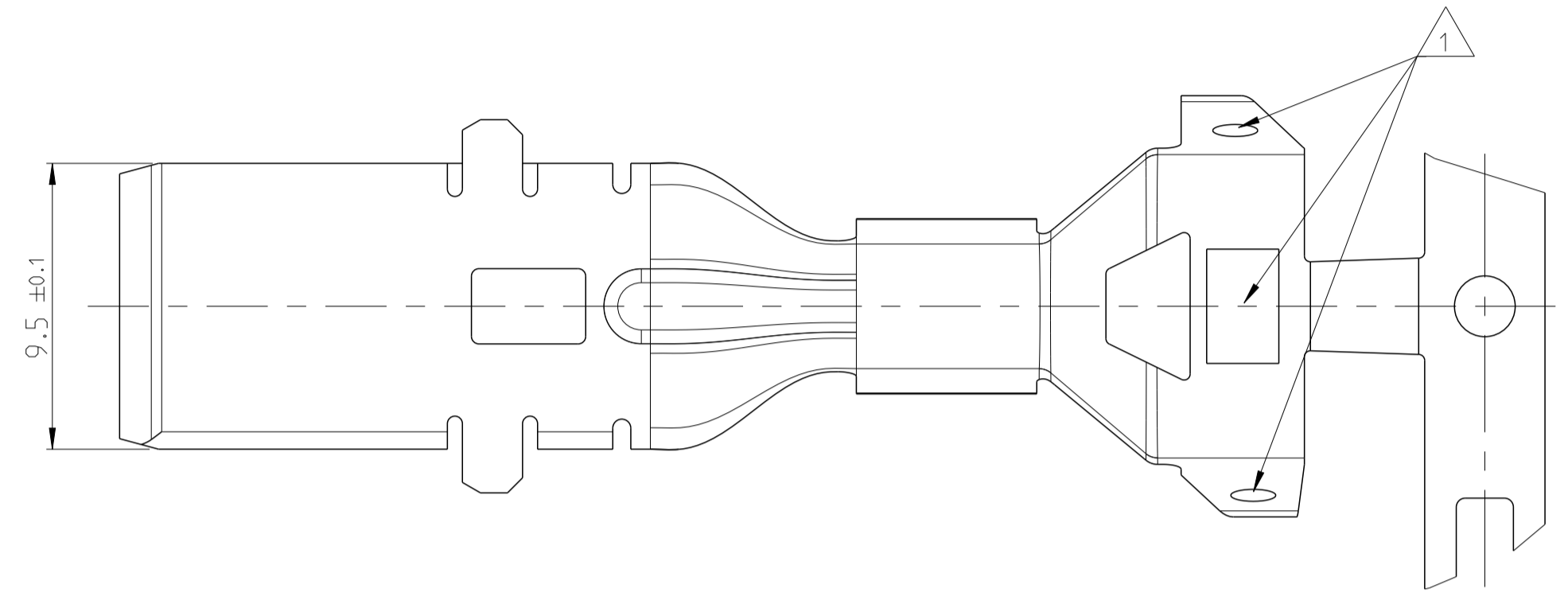


PROJECT NO.:		REVISIONS			
P.	LTR.	DESCRIPTION	DATE	OWN	APVD
B		ECR-15-010947	23JUL2015	SG	BH
B1		ECR-16-006866	19MAY2016	EH	BH
B2		ECR-16-007599	25MAY2016	EH	BH
B3		ECR-17-004538	29MAR2017	SM	BH

- Bemerkungen
NOTES
- 1 TE Logo, Änderungsstand, Datumcode
TE LOGO, REVISION STATUS, DATE CODE
 - 2 Fuer Leitung nach GMW 15626 Thin Wall
FOR WIRE SEE GMW 15626 THIN WALL



3-2287018-3	-	CuFe2P R365	SILVER PLATED versilbert	16													
2-2287018-3	B	CuFe2P R365	SILVER PLATED versilbert	8-10	7.3	7.7	4.2	12.5	(14,5)	14	10	7	4.1	15.9	2.5	40.4	2287382-2 (10mm ²)
2-2287018-1	A		HOT-DIPED TINNED feuert verzinkt														2287382-5 (8mm ²)
1-2287018-3	B	CuFe2P R365	SILVER PLATED versilbert	4-6	5.82	6.27	3.1	12	(14)	14.2	9.3	6	4.1	14.9	2.5	39.4	2287382-1 (6mm ²)
1-2287018-1	B		HOT-DIPED TINNED feuert verzinkt														2287382-4 (4mm ²)

TE ORDER-NO. STRIP FORM	REV./Rev.	BODY Kontakt- koerper	BODY Kontakt- koerper	WIRE RANGE Draht- groessen- bereich	A	B	D _{Dr}	C	(D)	E	D _{ISO}	F	G	H	J	K	Ø (mm)		
					WIRE CRIMP Drahtcrimp		INSULATION CRIMP Isolationscrimp												
Bestell-Nr. Bandware		MATERIAL Werkstoff	SURFACE Oberflaeche	[mm ²]	STRIP FORM/Bandware														SINGLE WIRE SEAL FOR CAVITY DIAMETER Einzelichtung Kammerdurchmesser TE NO.
																		2	

THIS DRAWING IS A CONTROLLED DOCUMENT.
DIMENSIONING AND TOLERANCING PER GPS (ISO STANDARDS)

TOLERANCING ISO 8015
TOLERIERUNG ISO 8015

OWN: S. G. 26MAY2015
CHK: M. Schambach 26MAY2015
APVD: B. Hielscher 26MAY2015

PRODUCT SPEC. PRODUCT SPEZ.
APPLICATION SPEC. VERARBEITUNGSSPEZ.
114-94407

FINISH/SCHLEIF-FARBE

WEIGHT GEWICHT
CUSTOMER DRAWING /KUNDENZEICHNUNG

SCALE MASSSTAB 5:1
SHEET BLATT 1 OF 1 VON 1
REV. B3

RESTRICTED TO NUR FÜR

NAME: TAB 9.5mm x 1.2mm SEALED

SIZE: A1
CAGE CODE: 00779
DRAWING NO.: ©=2287018

TE Connectivity