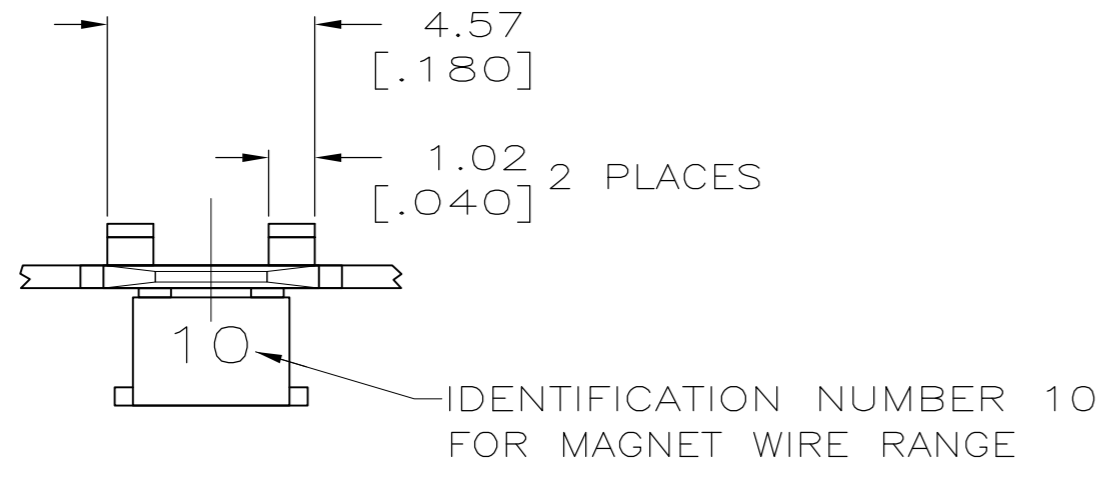
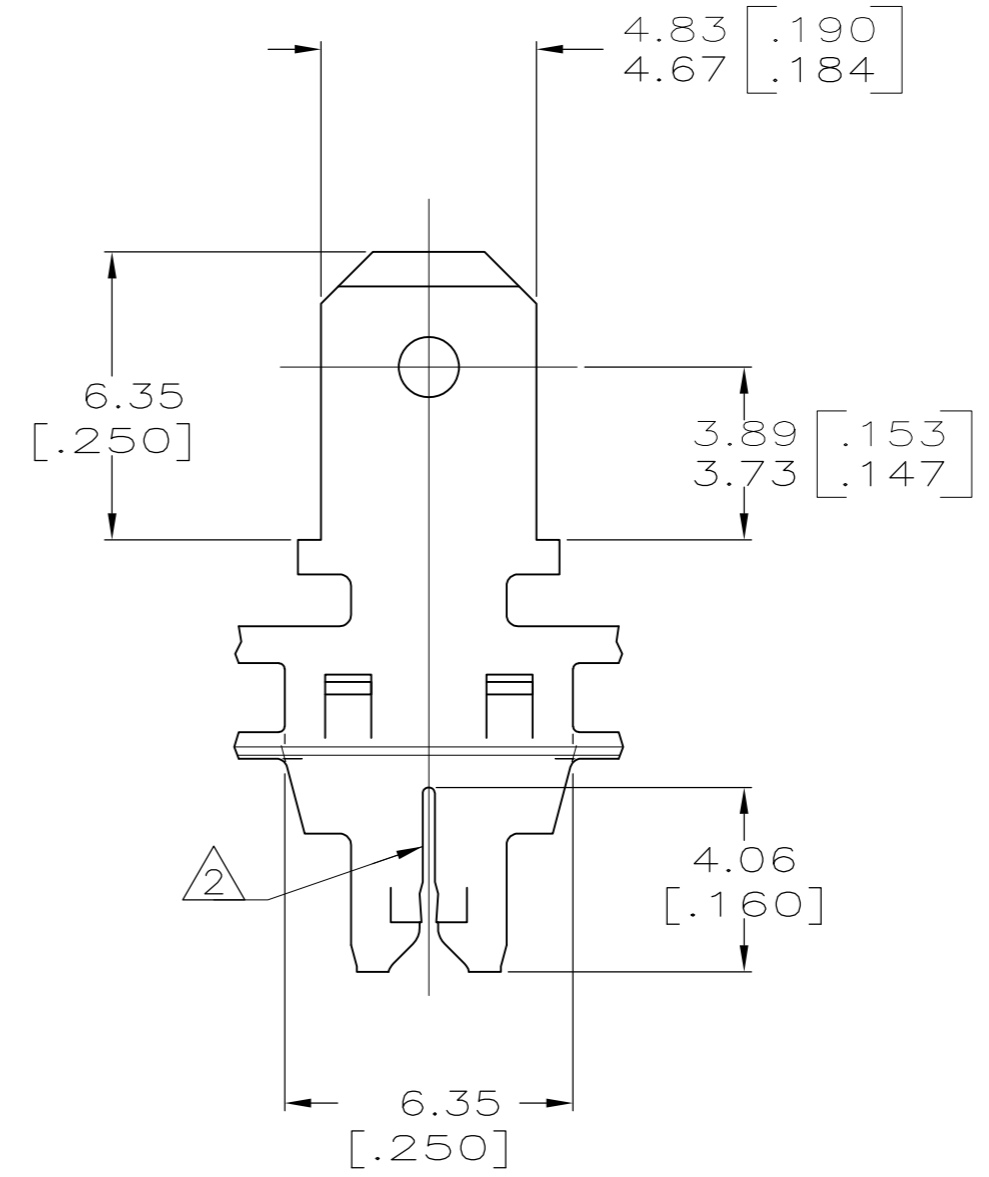
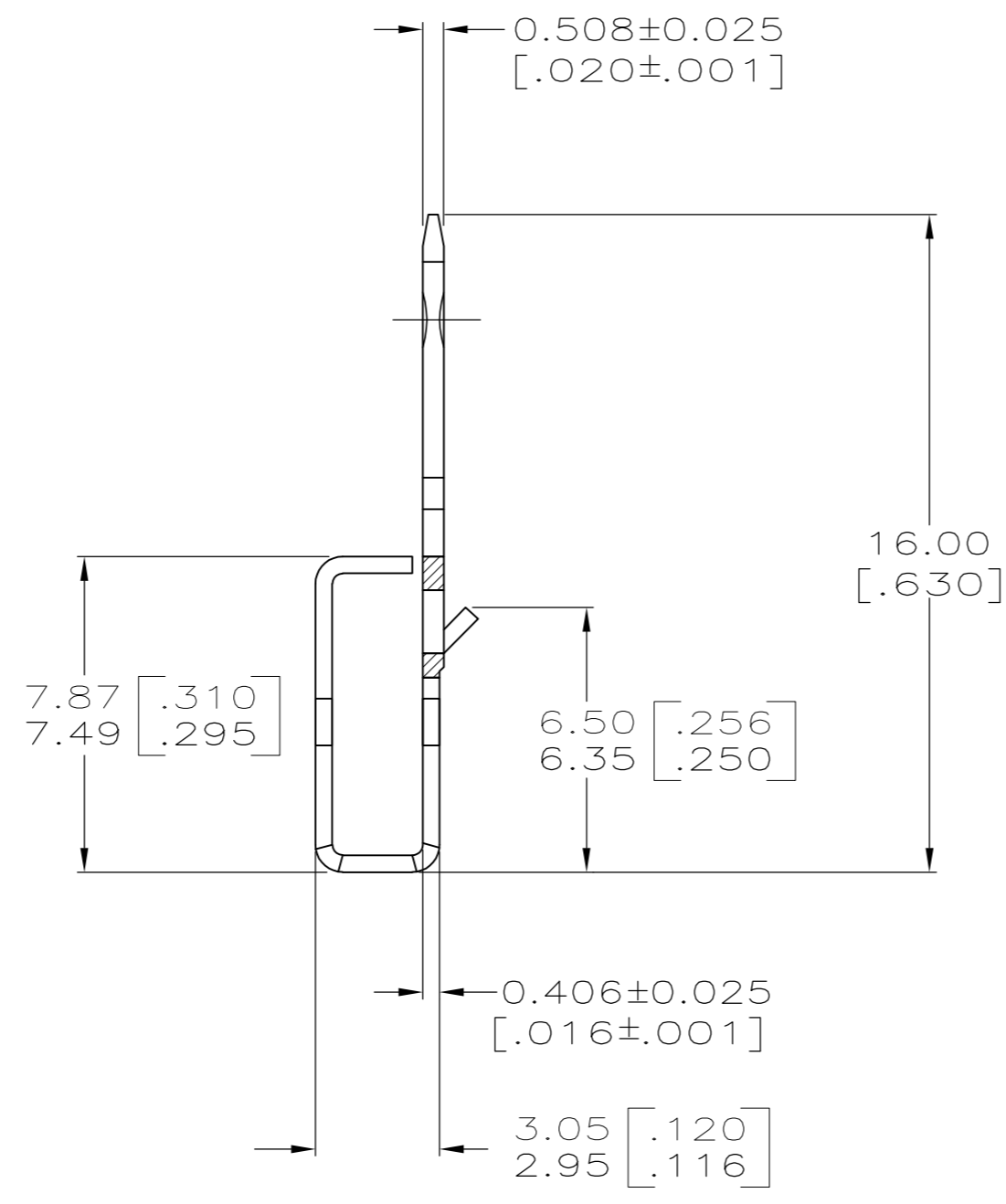
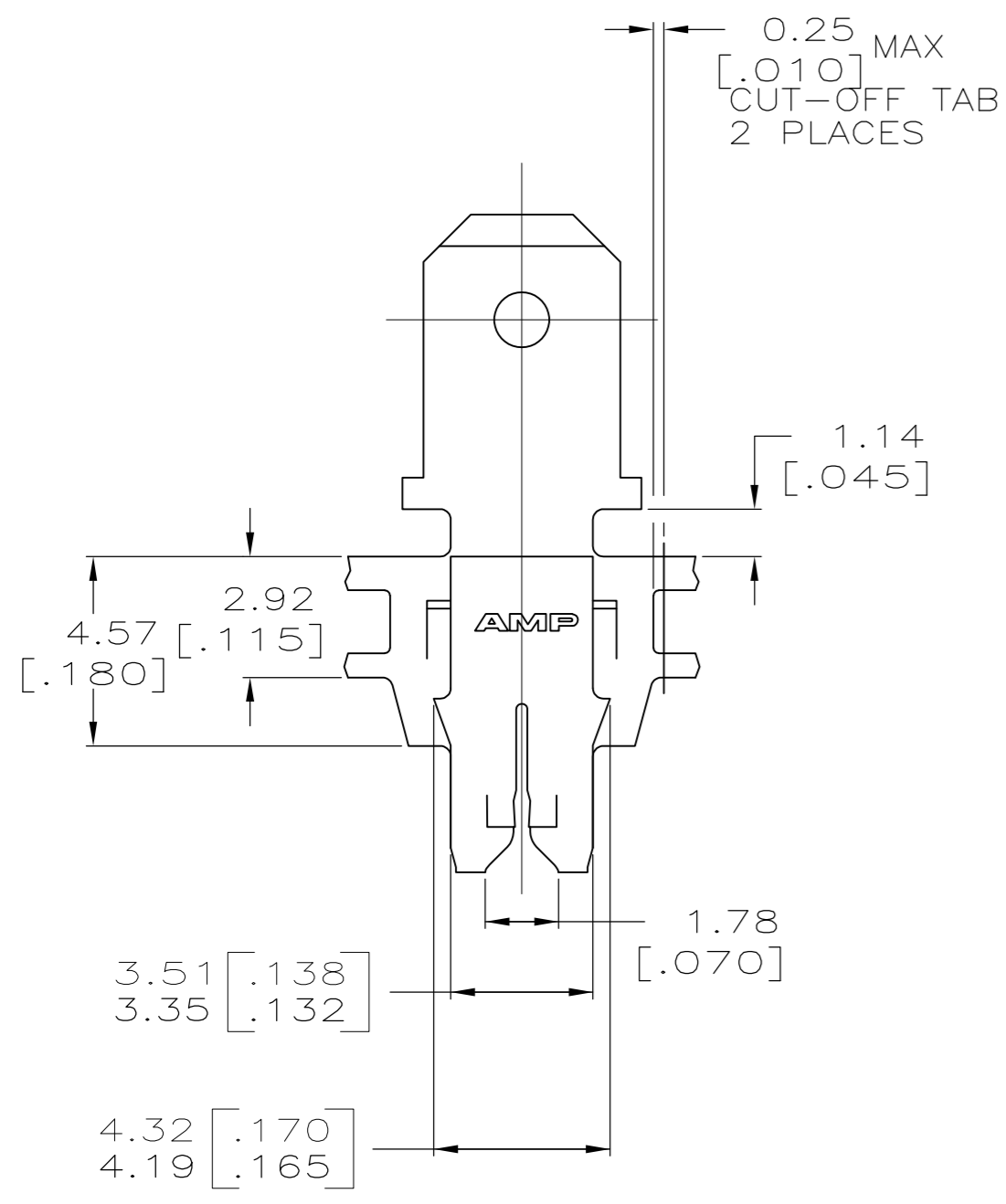


THIS DRAWING IS UNPUBLISHED. RELEASED FOR PUBLICATION
 © COPYRIGHT - By - ALL RIGHTS RESERVED.

LOC		DIST		REVISIONS			
P	LTR	DESCRIPTION	DATE	DWN	APVD		
	K1	ECR-13-017177	05NOV13	PKS	RRP		



1 CONTINUOUS STRIP ON REELS WITH TERMINALS LOCATED ON 8.38±0.08 [.330±.003] CENTERS.
 2 SLOT TERMINATES A SINGLE OR DOUBLE MAGNET WIRE OF THE SAME SIZE AND TYPE; COPPER RANGE: 0.36-0.57 mm [#27-#23] AWG.



OBSOLETE

082 PRE-MILLED BRASS	63256-2
4M PRE-MILLED BRASS	63256-1
MATERIAL	PART NO.

THIS DRAWING IS A CONTROLLED DOCUMENT.		DWN 28/MAR/94 R.R. BUCHHEISTER JR.														
DIMENSIONS: INCHES		CHK 04/APR/94 MICHAEL S. FEHER														
TOLERANCES UNLESS OTHERWISE SPECIFIED:		APVD 04/APR/94 NELSON E. NEFF	NAME													
<table border="1"> <tr><td>0 PLC</td><td>± -</td></tr> <tr><td>1 PLC</td><td>± -</td></tr> <tr><td>2 PLC</td><td>± 0.25 [.010]</td></tr> <tr><td>3 PLC</td><td>± -</td></tr> <tr><td>4 PLC</td><td>± -</td></tr> <tr><td>ANGLES</td><td>± -</td></tr> </table>		0 PLC	± -	1 PLC	± -	2 PLC	± 0.25 [.010]	3 PLC	± -	4 PLC	± -	ANGLES	± -	PRODUCT SPEC 108-2012	TAB, 4.75 [.187] FASTON,™ MAG-MATE™	
0 PLC	± -															
1 PLC	± -															
2 PLC	± 0.25 [.010]															
3 PLC	± -															
4 PLC	± -															
ANGLES	± -															
MATERIAL SEE CHART		FINISH TIN PLATED	APPLICATION SPEC 114-2094	RESTRICTED TO												
		WEIGHT -	SIZE A2	CAGE CODE 00779												
		CUSTOMER DRAWING	DRAWING NO. C-63256	SCALE 6:1												
			SHEET 1 of 1	REV K1												