

# AHM Series

## Dual stage medical grade EMI Filter

These series range of double stage filters with low leakage give superior performance when used in applications with low Impedance loads controlling pulsed, continuous and intermittent interference noise and where high levels Of mains borne interference are present.



### FEATURES

- Double stage filter
- Low Leakage
- Superior Performance
- Chassis mounting
- High conducted attenuation performance

### APPLICATIONS

- Medical Equipment
- Diagnostic Equipment
- Low Leakage Applications
- X ray Machines
- MRI

### SERIES SPECIFICATIONS

Standard Part No.	Rated current @40°C	Termination		Weight (g)
		Tab	Screw	
AHM-01	1A	6.3 x 0.8		125
AHM-02	2A	6.3 x 0.8		125
AHM-03	3A	6.3 x 0.8		170
AHM-06	6A*	6.3 x 0.8		170
AHM-10	10A	6.3 x 0.8		170
AHM-15	15A	6.3 x 0.8		260
AHM-20	20A		M5	650
AHM-25	25A		M5	650
AHM-30	30A		M5	650
AHM-35	35A*		M5	1000
AHM-40	40A		M5	1000
AHM-50	50A		M6	2000

\*Not covered under NEMKO

### CHARACTERISTICS

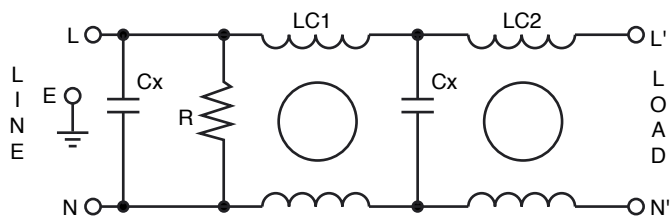
<b>Max. Cont. Oper. Voltage</b>	250VAC
<b>Operating Frequency</b>	50/60Hz
<b>Current ratings</b>	1A to 50A @40°C
<b>High Potential test voltage</b>	L to G 2120Vdc for 1 Minute; L to L 1414Vdc for 1 Minute
<b>Design</b>	corresponding to UL 60939-3, CSA 22.2 No.8-13 and IEC 60939
<b>Overload Capability</b>	135% of Rated current for 15 min.
<b>Flammability</b>	corresponding to UL 94 V-0
<b>Temperature range</b>	-25°C to +85°C
<b>Climatic Category</b>	25/85/21
<b>Recommended Torque (Nm)</b>	M5: 1.0-2.0; M6: 1.25 – 2.5; M8: 2.5-5; M10: 3.5-7

(continued)

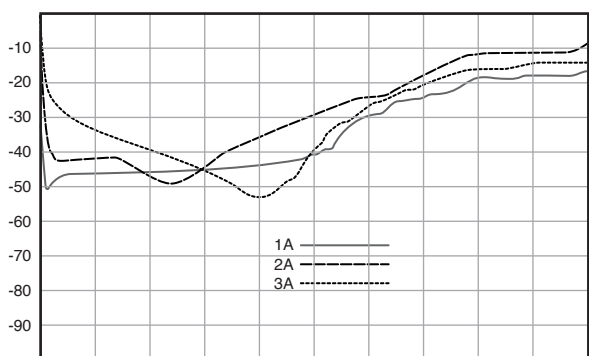
# AHM Series

## Dual stage medical grade EMI Filter

### CIRCUIT DIAGRAM

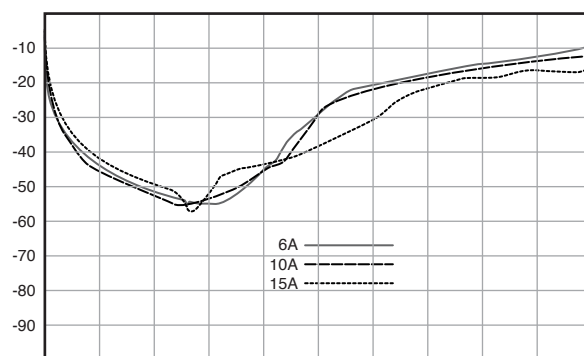


### INSERTION LOSS



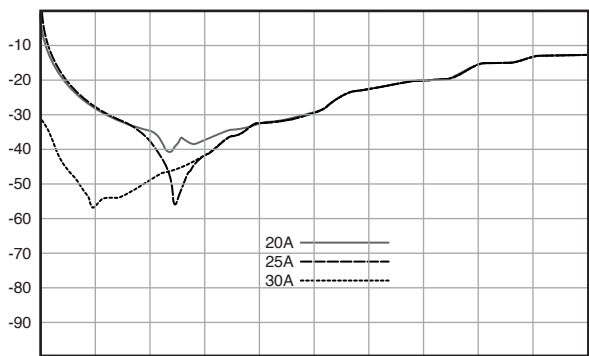
Start 30.00kHz

Stop 30.00MHz



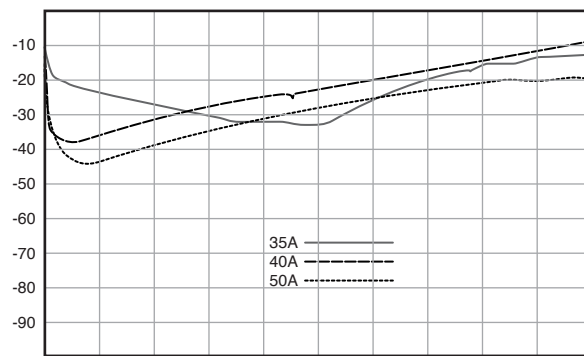
Start 30.00kHz

Stop 30.00MHz



Start 30.00kHz

Stop 30.00MHz



Start 30.00kHz

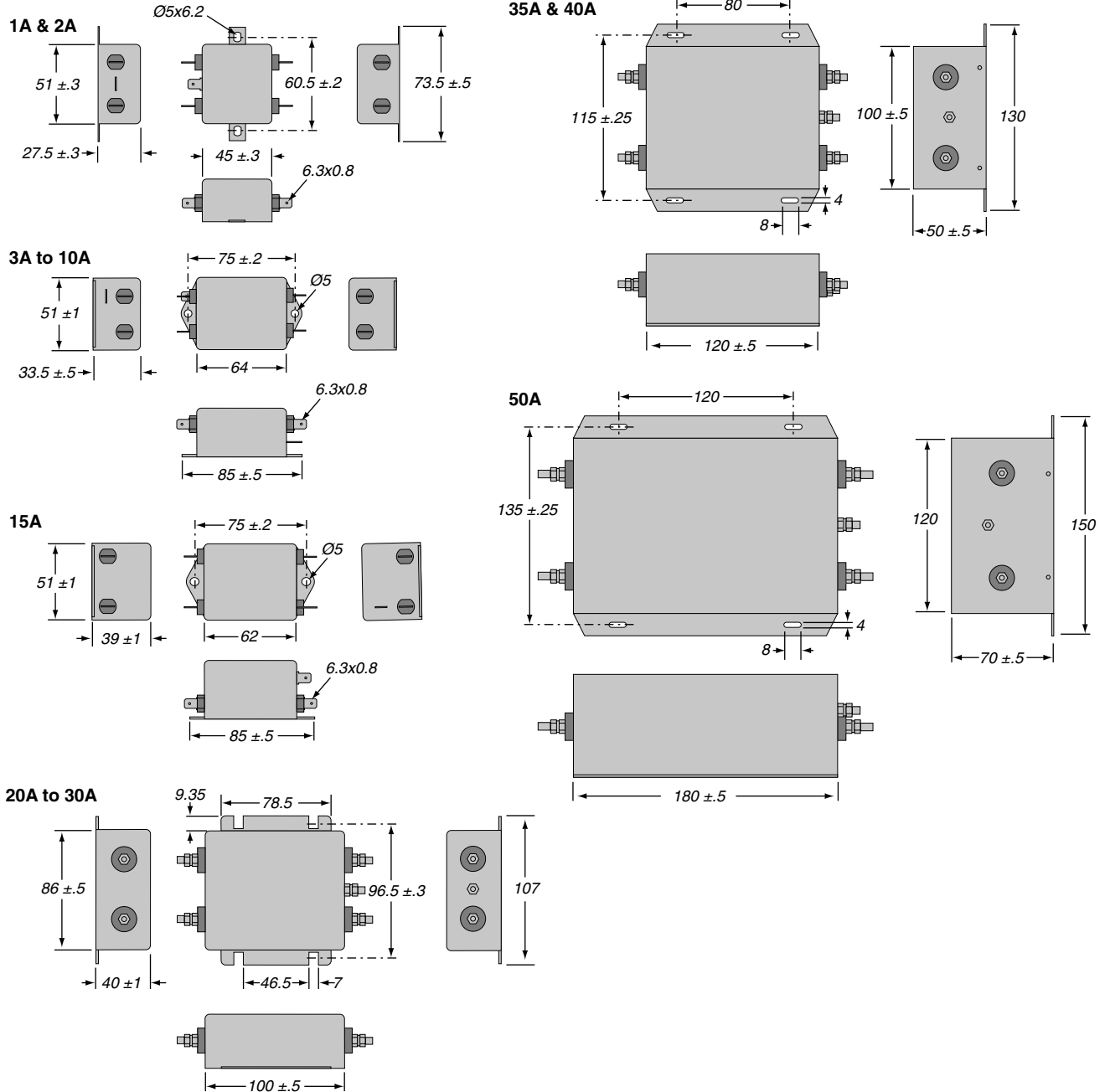
Stop 30.00MHz

# AHM Series

## Dual stage medical grade EMI Filter

### DIMENSIONS

All dimensions in mm; Tolerances according to ISO2768-m



### ORDERING INFORMATION

**A H M - 0 2**

Series Medical Grade Current rating

#### Standard part numbers

AHM-01 AHM-20  
 AHM-02 AHM-25  
 AHM-03 AHM-30  
 AHM-06 AHM-35  
 AHM-10 AHM-40  
 AHM-15 AHM-50