

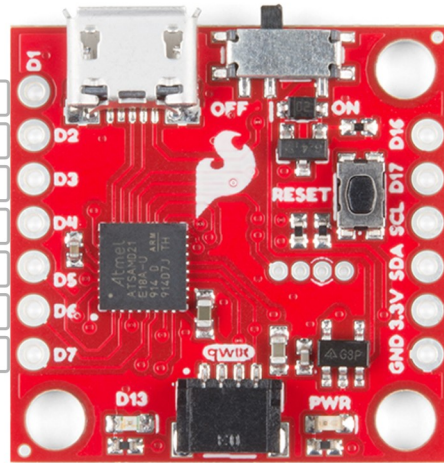
# Qwiic Micro - SAMD21E (DEV-15423)

Pin name	Port
Power	Analog
Ground	Serial
Control	PWM
Arduino	Misc

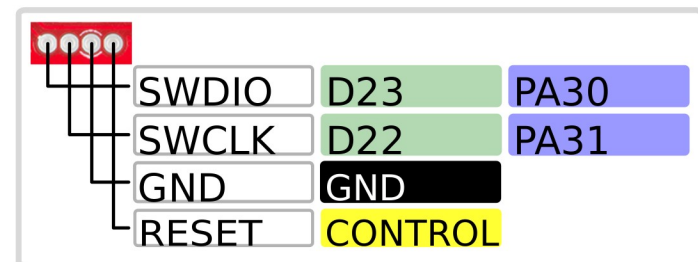
## Arduino Tips

analogWriteResolution(10) - to update PWM (0-1023)  
 analogReadResolution(12) - to update ADC (0-4095)

DAC	A0	PA02	D1	D1	RESET	CONTROL		
MOSI	A1	PA06	D2	D2	D16	D16	PA23	TX
MISO	A2	PA05	D3	D3	D17	D17	PA22	RX
SCK	A3	PA07	D4	D4	SCL	D8	PA09	SCL
CS	A4	PA10	D5	D5	SDA	D0	PA08	SDA
AREFB	A5	PA04	D6	D6	3.3V	3.3V		
			D7	D7	GND	GND		



D13
D13
LED



**Power**

VBatt: 3V-6V  
 VUSB: 5V  
 VCC: 3.3V @600mV  
 Power Switch  
 JST connector on backside

**SAMD21E**

ARM Cortex-M0+ @48MHz  
 VCC: 1.62V-3.63V  
 256KB Flash/32KB SRAM  
 (plus 4Mb SPI Flash chip)  
 4 Sercom ports  
 12-bit ADC  
 10-bit DAC

**LEDs/Misc Pins**

Power LED: Red  
 Stat LED: Blue  
 Qwiic Connector (I2C)  
 (SDA:D0, SCL:D8)  
 W25Q32FV 4Mb flash  
 (MOSI:D2, SCK:D4,  
 MISO:D3, SS:D5)

