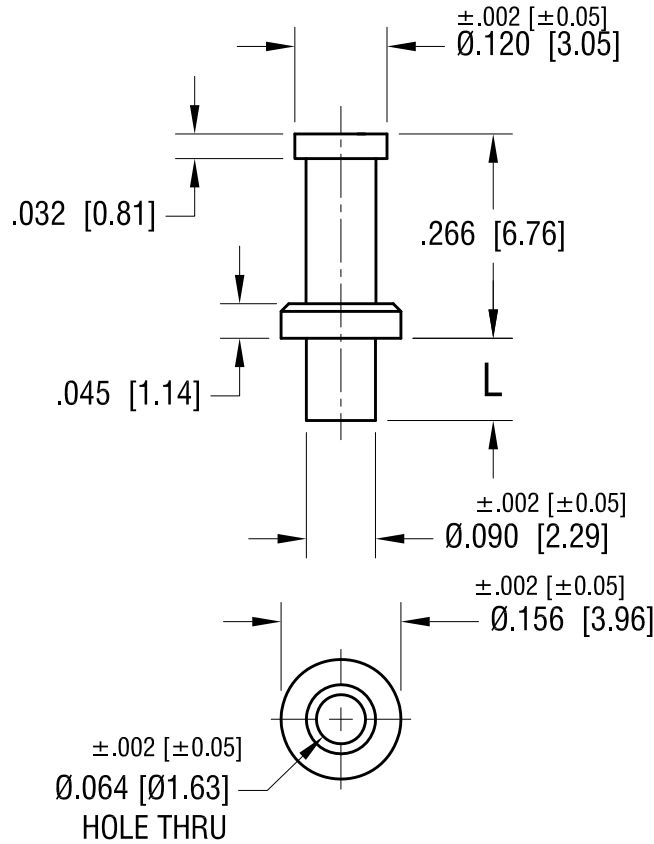


THIS DOCUMENT IS THE PROPERTY OF
KEYSTONE ELECTRONICS CORP. AND
SHALL NOT BE REPRODUCED, DISTRIBUTED
OR USED AS A BASIS FOR MANUFACTURE
WITHOUT PRIOR WRITTEN PERMISSION
FROM KEYSTONE ELECTRONICS CORP.

ACTUAL SIZE



P/N 1540-3



PART NO.	'L' DIM.
1540-2	.107 [2.72]
1540-3	.137 [3.48]
1540-4	.167 [4.24]

KEYSTONE ELECTRONICS CORP.

www.keyelco.com • NEW HYDE PARK, NY 11040 • Tel (516) 328-7500

PART NAME

TURBULAR TERMINAL

MATERIAL

BRASS

FINISH

TIN PLATE

DRN BY

NT

DATE

4.10.19

APP'D

RH

SCALE

4X

TOLERANCES

INCH [MM]

DECIMAL

$\pm .005$ [± 0.13]

ANGULAR

$\pm 1^\circ$

UNLESS OTHERWISE SPECIFIED

CODE

C

DWG NO.

1540-2 - 1540-4

DATE

DESCRIPTION

REV.