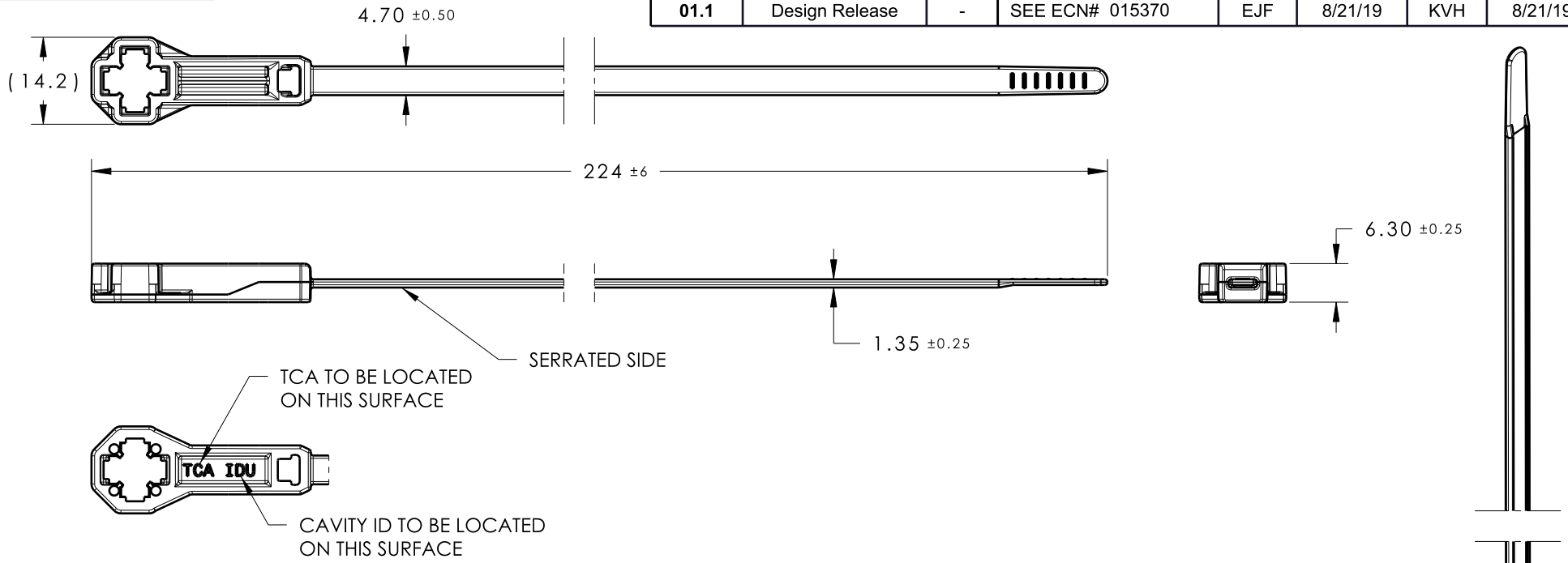


Revision Level			Revision Record	Changed	Date	Approved	Date
Drawing	State	Part					
01.1	Design Release	-	SEE ECN# 015370	EJF	8/21/19	KVH	8/21/19



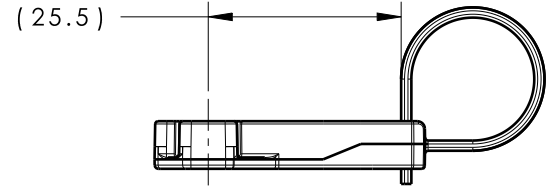
REFERENCE:

PERFORMANCE REQUIREMENTS:

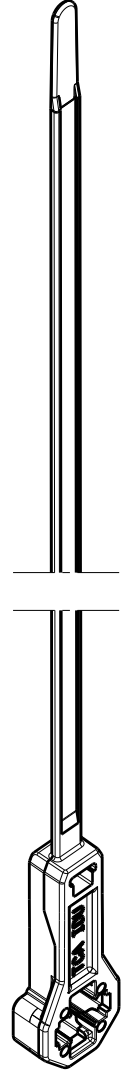
1. STUD MOUNT PUSH ON FORCE: 45 NEWTONS (10 LBS) MAX ON EACH APPLICABLE STUD SIZE
2. STUD MOUNT PULL OFF FORCE: 223 NEWTONS (50 LBS) MIN ON EACH APPLICABLE STUD SIZE AT 2.5-4.0% MOISTURE
3. APPLICABLE STUD SIZE:
 - A. M5 X 0.8
 - B. T5
 - C. M6 X 1
 - D. T6



4. CABLE TIE MIN LOOP TENSILE STRENGTH: 223 NEWTONS (50 LBS)
5. BUNDLE RANGE: 2.0mm TO 50.0mm
6. MAXIMUM PERCENT REGRIND PERMISSIBLE: 25%
7. MAX ALLOWABLE FLASH TO BE: 0.5MM
8. MAX ALLOWABLE MISMATCH TO BE: 0.1MM



ASSEMBLED VIEW



ISOMETRIC VIEW

GLOBAL PART DESCRIPTION	MATERIAL	COLOR
T50ROSLPM6SMSO25-PA46-BN	PA46	BROWN

Material SEE CHART COLOR: SEE CHART	Units millimeters	The copyright of this drawing is reserved by HellermannTyton. It is issued on condition that it is not reproduced, copied or disclosed to a third party, either wholly or in part, without the consent of HellermannTyton.	Drawn	CTF	06/04/2019	Article/Type-No	T50ROSLPM6SMSO25	Scale	1:1
	Tolerance defined on each dimension		Approved	KVH	06/04/2019	Title	T50ROS CABLE TIE WITH LOW PROFILE M6 STUD MOUNT & 25mm OFFSET	Project Number	16-1636
			HellermannTyton		Drawing-No	Production : Phase		Format	AH
		North America Email: corp@htamericas.com Web: www.hellermann.tyton.com	16-1636-012-CSU			Sheet	1/1		