

THIS DRAWING IS UNPUBLISHED.

RELEASED FOR PUBLICATION

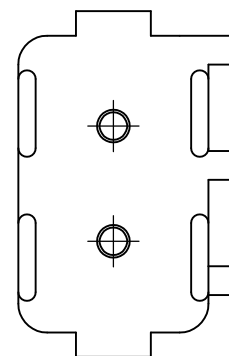
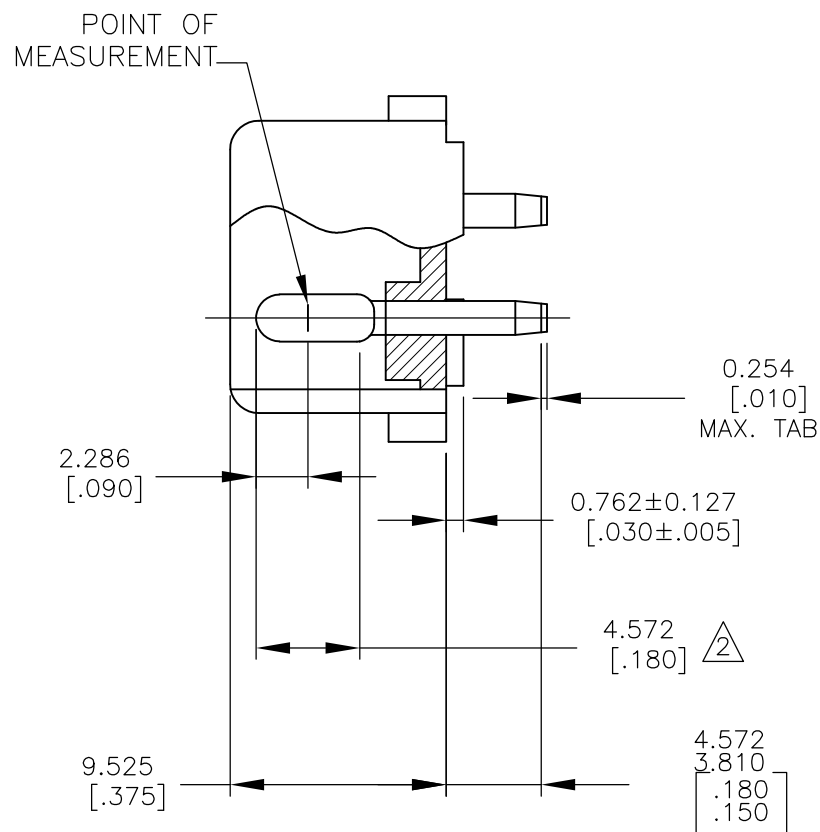
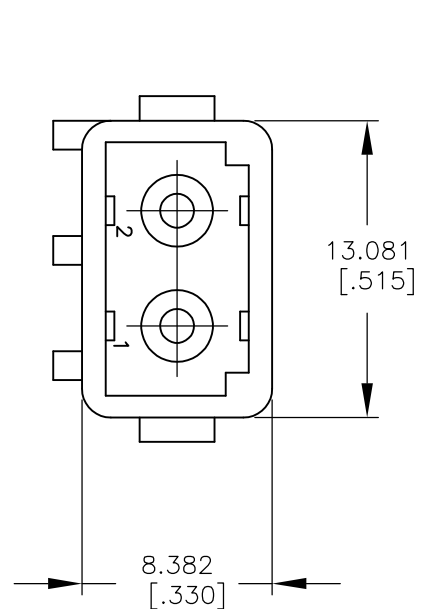
ALL RIGHTS RESERVED.

© COPYRIGHT 158651By -

LOC CM DIST 00

REVISIONS

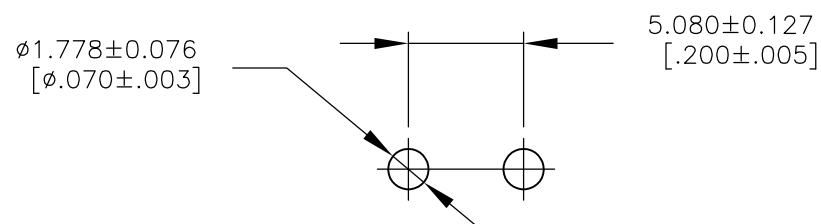
P	LTR	DESCRIPTION	DATE	DWN	APVD
	A	ECR-13-014791	19SEP2013	KKB	RRP



1. PARTS MUST COMPLY WITH SOLDERABILITY SPEC. 109-11-3.

2 CONTACT IS PLATED OVERALL WITH .000050 NICKEL, THEN .000030 GOLD OVER CONTACT LENGTH INDICATED AND MATTE TIN ON SOLDER TAIL END.

3 PRELIMINARY PART NOT RELEASED FOR PRODUCTION.



RECOMMENDED LAYOUT FOR 1.575 [.062] THICK P.C. BOARD

METRIC

1586512-3	NYLON-NAT VO.	COPPER ALLOY-GOLD
1586512-2	NYLON-NAT.	COPPER ALLOY-GOLD
ASSEMBLY NO.	HSG, MATL& COLOR	PIN MATL & FINISH

DIMENSIONS:		TOLERANCES UNLESS OTHERWISE SPECIFIED:		DWN RAGHU 06OCT2005		CHK D.COLEY 19SEP2013		APVD D.COLEY 06OCT2005		NAME	
mm	[INCHES]	0 PLC	± -	PRODUCT SPEC		APPLICATION SPEC		SIZE		CAGE CODE	DRAWING NO
		1 PLC	± -	MATERIAL		FINISH		WEIGHT		RESTRICTED TO	
		2 PLC	± -	SEE TABLE		SEE TABLE		A3		00779	C-1586512
		3 PLC	± -					CUSTOMER DRAWING		SCALE	SHEET
		4 PLC	± -							3:1	1 OF 1
		ANGLES	± -								REV
											A

STE TE Connectivity

2 CIRCUIT COMMERCIAL MATE-N-LOK (TM) HEADER