

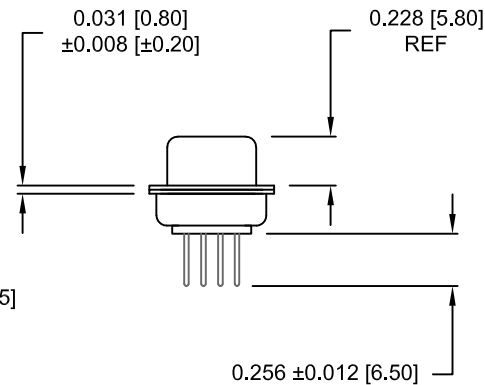
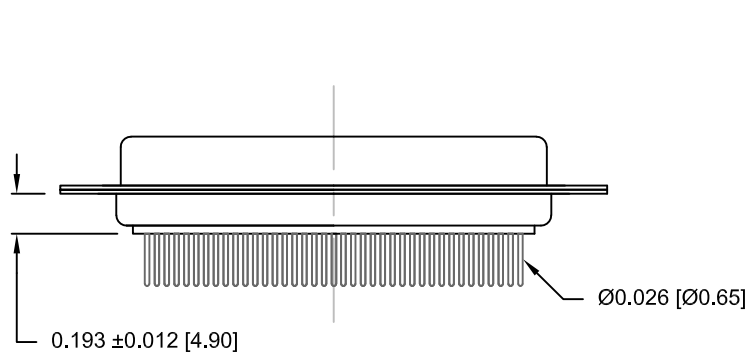
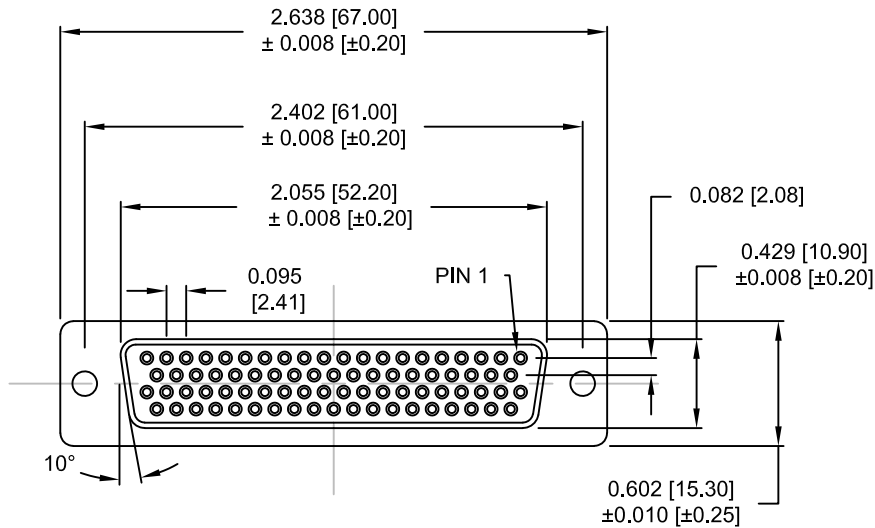
DESCRIPTION: HIGH DENSITY - MACHINED CONTACTS - VERTICAL - 78 POSITION

**MATERIALS AND FINISH:**

SHELL: STEEL MATERIAL, NICKEL FINISH  
 INSULATOR: PA6T, 260°C PROCESS TEMP, UL 94V-0 RATED, BLACK  
 CONTACT MATERIAL: BRASS  
 CONTACT FINISH: SEE PLATING PART NUMBER KEY BELOW

**ELECTRICAL:**

CONTACT CURRENT RATING: 3 AMPS  
 CONTACT RESISTANCE: 10 mOHMS Max.  
 DIELECTRIC WITHSTANDING VOLTAGE: 1,000VAC Min.  
 INSULATION RESISTANCE: 5 GOHMS Min.  
 TEMPERATURE RATING: -55° ~ +125° C



**180-M78-213RYYY**

- SERIES \_\_\_\_\_
- MACHINED CONTACTS \_\_\_\_\_
- POSITIONS \_\_\_\_\_
- 78 \_\_\_\_\_
- GENDER \_\_\_\_\_
- 2 = FEMALE \_\_\_\_\_
- CONTACT LENGTH \_\_\_\_\_
- 1 = 0.256" \_\_\_\_\_
- SHELL PLATING \_\_\_\_\_
- 3 = NICKEL \_\_\_\_\_
- HIGH TEMP INSULATOR (260°C) \_\_\_\_\_
- HARDWARE OPTIONS \_\_\_\_\_
- 00 = NO HARDWARE, Ø.120" HOLE \_\_\_\_\_
- 01 = .098" CLINCH NUT (BOARD SIDE) \_\_\_\_\_
- 02 = .236" CLINCH NUT (BOARD SIDE) \_\_\_\_\_
- 03 = .236" CLINCH NUT (MATING SIDE) \_\_\_\_\_
- 05 = .224" BOARD LOCK (BOARD SIDE) \_\_\_\_\_
- S5 = .237" BOARD LOCK (BOARD SIDE) \_\_\_\_\_
- 91 = .224" 4-40 SPACER/BOARD LOCK \_\_\_\_\_
- PLATING OPTIONS \_\_\_\_\_
- 1 = GOLD FLASH, ENTIRE CONTACT \_\_\_\_\_
- 2 = 30u" GOLD, ENTIRE CONTACT \_\_\_\_\_
- 3 = 50u" GOLD, ENTIRE CONTACT \_\_\_\_\_

UNITS = INCHES [MM] DO NOT SCALE FROM DRAWING



THESE DRAWINGS AND SPECIFICATIONS ARE THE PROPERTY OF NorComp AND SHALL NOT BE REPRODUCED, COPIED OR USED AS THE BASIS FOR THE MANUFACTURE OF SALE OF APPARATUS WITHOUT WRITTEN PERMISSION.

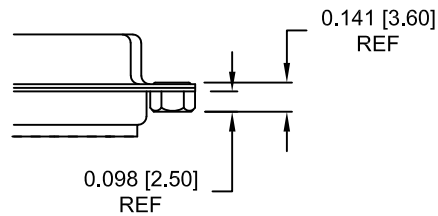
DRAWN: M. SIGMON		DATE: 09-22-16	
SCALE: NTS	SHEET 1	OF 3	REV 3
DWG NO. 180-M78-213RYYY			

RoHS COMPLIANT

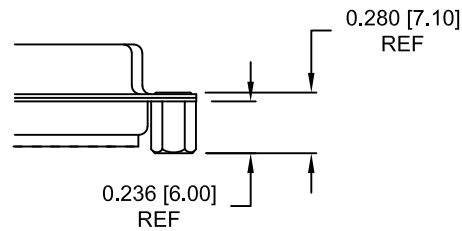
**NorComp**

ALL CLINCH-NUTS ARE 4-40 INTERNAL THREADS

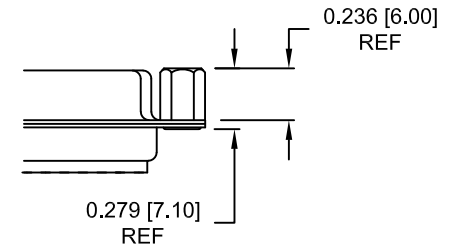
01X ..... 0.098" BOARD SIDE



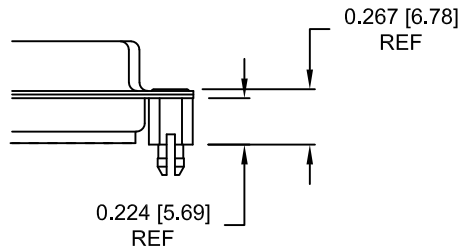
02X ..... 0.236" BOARD SIDE



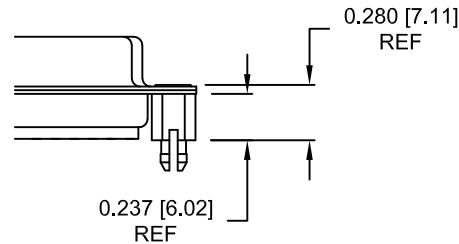
03X..... 0.236" MATING SIDE



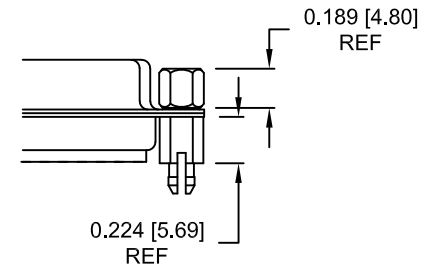
05X ..... 0.224" BOARD SIDE



S5X ..... 0.237" BOARD SIDE



91X ..... 0.224" BOARD SIDE  
0.189" MATING SIDE




NOTE: 4-40 FEMALE SCREW LOCK IS REMOVABLE

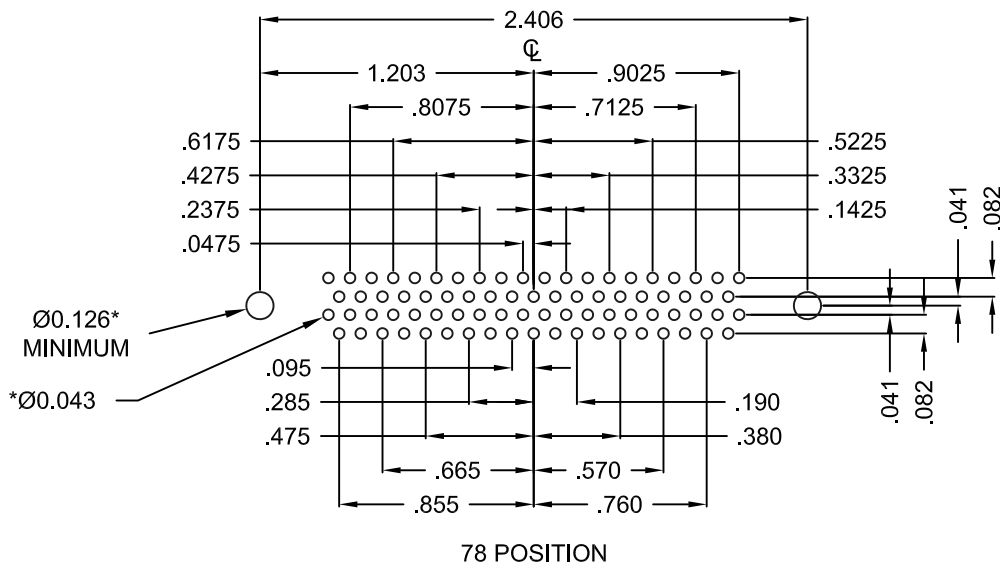
UNITS = INCHES [mm]

DO NOT SCALE FROM DRAWING

RoHS COMPLIANT

	THESE DRAWINGS AND SPECIFICATIONS ARE THE PROPERTY OF NorComp AND SHALL NOT BE REPRODUCED, COPIED OR USED AS THE BASIS FOR THE MANUFACTURE OF SALE OF APPARATUS WITHOUT WRITTEN PERMISSION.		DRAWN: <b>M. SIGMON</b>	DATE: <b>09-22-16</b>
	<h1>NorComp</h1>		SCALE: NTS	SHEET OF 2 3
DWG NO. <b>180-M78-213RYYY</b>				


DESCRIPTION: HIGH DENSITY - MACHINED CONTACTS - VERTICAL - 78 POSITION



UNITS = inch

\* TYP.  
SUGGESTED SIZE  
MAY NOT BE SUITABLE FOR ALL APPLICATIONS

DO NOT SCALE FROM DRAWING

	THESE DRAWINGS AND SPECIFICATIONS ARE THE PROPERTY OF NorComp AND SHALL NOT BE REPRODUCED, COPIED OR USED AS THE BASIS FOR THE MANUFACTURE OF SALE OF APPARATUS WITHOUT WRITTEN PERMISSION.		DRAWN: <b>M. SIGMON</b>	DATE: <b>09-22-16</b>
	NorComp		SCALE: NTS	SHEET OF 3 3
DWG NO. <b>180-M78-213RYYY</b>				