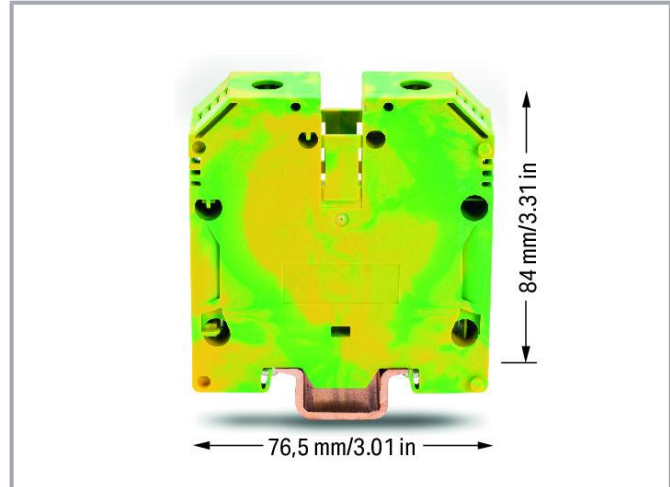
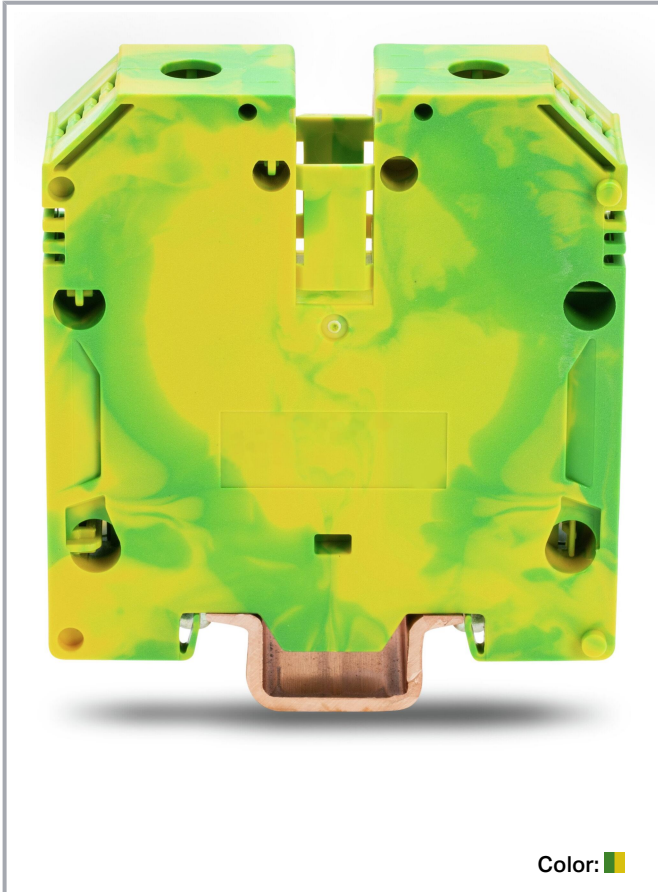


Data sheet | Item number: 883-7007

2-conductor ground terminal block; 70 mm²; SCREW CLAMP CONNECTION;
70,00 mm²; green-yellow



www.wago.com/883-7007



Data

Electrical data

Ratings per IEC/EN

Ratings per

IEC/EN 60947-7-2

Ratings per UL 1059

Approvals per

UL 1059

Subject to changes. Please also observe the further product documentation!

WAGO GmbH & Co. KG
Hansastr. 27
32423 Minden
Phone: +49571 887-0 | Fax: +49571 887-169
Email: info.de@wago.com | Web: www.wago.com

Do you have any questions about our products?
We are always happy to take your call at +49 (571) 887-44222.



Ratings per CSA

Approvals per	CSA 22.2 No 158
---------------	-----------------

Connection data

Total number of potentials	1
Number of levels	1

Connection 1

Connection technology	Screw connection
Actuation type	T-wrench; 4 mm
Connectable conductor materials	Copper Aluminum

Connectable conductor materials (note)

Terminating Aluminum Conductors

Both restrictions and application notes must be observed when terminating aluminum conductors. These instructions can be found in the WAGO Webshop under "Downloads – Documentation – Additional Information: Terminating Aluminum Conductors."

Nominal cross-section	70 mm ²
Solid conductor	10 ... 95 mm ² / 8 ... 3/0 AWG
Stranded conductor	10 ... 95 mm ² / 8 ... 3/0 AWG
Fine-stranded conductor	10 ... 70 mm ² / 8 ... 2/0 AWG
Fine-stranded conductor; with insulated ferrule	10 ... 70 mm ² / 8 ... 2/0 AWG
Strip length	22 mm / 0.87 inches
Wiring direction	Side-entry wiring
Screw thread	M5

Physical data

Width	20.5 mm / 0.807 inches
Height	76.5 mm / 3.012 inches
Depth from upper-edge of DIN-rail	84 mm / 3.307 inches

Mechanical Data

Tightening torque	2.5 ... 4 Nm
Design	horizontal type
Mounting type	DIN-rail 35 x 15; 2.3 mm thick; copper

Subject to changes. Please also observe the further product documentation!

Marking level

Side marking

Material Data

Note (material data)

Information on material specifications can be found here

Color	green-yellow
Insulation material	Polyamide (PA66)
Flammability class per UL94	V0
Weight	192 g

Environmental requirements

Continuous operating temperature

-35 ... +105 °C

Commercial data

ETIM 8.0	EC000901
ETIM 7.0	EC000901
PU (SPU)	10 pcs
Packaging type	box
Country of origin	DE
GTIN	4055143940825
Customs tariff number	85369010000

Environmental Product Compliance

RoHS Compliance Status

Compliant, No Exemption

Optional accessories

Jumpers

Jumper



Item no.: 883-7042

Jumper; 2-way; unplated; silver-colored

www.wago.com/883-7042

Item no.: 883-7043

Jumper; 3-way; unplated; silver-colored

www.wago.com/883-7043

Item no.: 883-7044

Jumper; 4-way; unplated; silver-colored

www.wago.com/883-7044

Voltage tap

Subject to changes. Please also observe the further product documentation!

WAGO GmbH & Co. KG

Hansastr. 27

32423 Minden

Phone: +49571 887-0 | Fax: +49571 887-169

Email: info.de@wago.com | Web: www.wago.com

Do you have any questions about our products?

We are always happy to take your call at +49 (571) 887-44222.

Power tap

**Item no.: 883-7030**Power tap; 10,00 mm²; beigewww.wago.com/883-7030

Marking accessories

Marker

**Item no.: 2009-115/000-002**

WMB-Inline; for Smart Printer; 1500 pieces on roll; stretchable 5 - 5.2 mm; plain; snap-on type; yellow

www.wago.com/2009-115/000-002**Item no.: 2009-115/000-007**

WMB-Inline; for Smart Printer; 1500 pieces on roll; stretchable 5 - 5.2 mm; plain; snap-on type; gray

www.wago.com/2009-115/000-007**Item no.: 2009-115/000-017**

WMB-Inline; for Smart Printer; 1500 pieces on roll; stretchable 5 - 5.2 mm; plain; snap-on type; light green

www.wago.com/2009-115/000-017**Item no.: 2009-115/000-023**

WMB-Inline; for Smart Printer; 1500 pieces on roll; stretchable 5 - 5.2 mm; plain; snap-on type; green

www.wago.com/2009-115/000-023**Item no.: 2009-115/000-024**

WMB-Inline; for Smart Printer; 1500 pieces on roll; stretchable 5 - 5.2 mm; plain; snap-on type; violet

www.wago.com/2009-115/000-024**Item no.: 2009-115**

WMB-Inline; for Smart Printer; 1500 pieces on roll; stretchable 5 - 5.2 mm; plain; snap-on type; white

www.wago.com/2009-115**Item no.: 793-5501/000-007**

WMB marking card; as card; for terminal block width 5 - 17.5 mm; stretchable 5 - 5.2 mm; plain; snap-on type; gray

www.wago.com/793-5501/000-007**Item no.: 793-5501/000-012**

WMB marking card; as card; for terminal block width 5 - 17.5 mm; stretchable 5 - 5.2 mm; plain; snap-on type; orange

www.wago.com/793-5501/000-012**Item no.: 793-5501/000-014**

WMB marking card; as card; for terminal block width 5 - 17.5 mm; stretchable 5 - 5.2 mm; plain; snap-on type; brown

www.wago.com/793-5501/000-014**Item no.: 793-5501/000-017**

WMB marking card; as card; for terminal block width 5 - 17.5 mm; stretchable 5 - 5.2 mm; plain; snap-on type; light green

www.wago.com/793-5501/000-017

Subject to changes. Please also observe the further product documentation!

WAGO GmbH & Co. KG

Hansastr. 27

32423 Minden

Phone: +49571 887-0 | Fax: +49571 887-169

Email: info.de@wago.com | Web: www.wago.com

Do you have any questions about our products?

We are always happy to take your call at +49 (571) 887-44222.



Item no.: 793-5501/000-023

WMB marking card; as card; for terminal block width 5 - 17.5 mm; stretchable 5 - 5.2 mm; plain; snap-on type; green

www.wago.com/793-5501



Item no.: 793-5501/000-024

WMB marking card; as card; for terminal block width 5 - 17.5 mm; stretchable 5 - 5.2 mm; plain; snap-on type; violet

www.wago.com/793-5501
/000-024



Item no.: 793-501/000-002

WMB marking card; as card; not stretchable; plain; snap-on type; yellow

www.wago.com/793-501
/000-002



Item no.: 793-501/000-007

WMB marking card; as card; not stretchable; plain; snap-on type; gray

www.wago.com/793-501
/000-007



Item no.: 793-501/000-017

WMB marking card; as card; not stretchable; plain; snap-on type; light green

www.wago.com/793-501
/000-017



Item no.: 793-501/000-012

WMB marking card; as card; not stretchable; plain; snap-on type; orange

www.wago.com/793-501
/000-012



Item no.: 793-501/000-023

WMB marking card; as card; not stretchable; plain; snap-on type; green

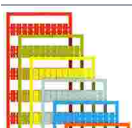
www.wago.com/793-501
/000-023



Item no.: 793-501/000-006

WMB marking card; as card; not stretchable; plain; snap-on type; blue

www.wago.com/793-501
/000-006



Item no.: 793-501/000-005

WMB marking card; as card; not stretchable; plain; snap-on type; red

www.wago.com/793-501
/000-005



Item no.: 793-501

WMB marking card; as card; not stretchable; plain; snap-on type; white

www.wago.com/793-501



Item no.: 793-501/000-024

WMB marking card; as card; not stretchable; plain; snap-on type; violet

www.wago.com/793-501
/000-024

Subject to changes. Please also observe the further product documentation!

WAGO GmbH & Co. KG

Hansastr. 27

32423 Minden

Phone: +49571 887-0 | Fax: +49571 887-169

Email: info.de@wago.com | Web: www.wago.com

Do you have any questions about our products?

We are always happy to take your call at +49 (571) 887-44222.

**Item no.: 793-5501/000-005**

WMB marking card; as card; for terminal block width 5 - 17.5 mm; stretchable 5 - 5.2 mm; plain; snap-on type; red www.wago.com/793-5501/000-005

**Item no.: 793-5501/000-002**

WMB marking card; as card; for terminal block width 5 - 17.5 mm; stretchable 5 - 5.2 mm; plain; snap-on type; yellow www.wago.com/793-5501/000-002

**Item no.: 793-5501/000-006**

WMB marking card; as card; for terminal block width 5 - 17.5 mm; stretchable 5 - 5.2 mm; plain; snap-on type; blue www.wago.com/793-5501/000-006

**Item no.: 793-5501**

WMB marking card; as card; for terminal block width 5 - 17.5 mm; stretchable 5 - 5.2 mm; plain; snap-on type; white www.wago.com/793-5501

**Item no.: 2009-115/000-012**

WMB-Inline; for Smart Printer; 1500 pieces on roll; stretchable 5 - 5.2 mm; plain; snap-on type; orange www.wago.com/2009-115/000-012

**Item no.: 2009-115/000-006**

WMB-Inline; for Smart Printer; 1500 pieces on roll; stretchable 5 - 5.2 mm; plain; snap-on type; blue www.wago.com/2009-115/000-006

**Item no.: 2009-115/000-005**

WMB-Inline; for Smart Printer; 1500 pieces on roll; stretchable 5 - 5.2 mm; plain; snap-on type; red www.wago.com/2009-115/000-005

Protective warning marker

Cover

**Item no.: 883-7086**

Protective warning marker; with high-voltage symbol; yellow www.wago.com/883-7086

**Item no.: 883-7088**

Protective warning marker; with high-voltage symbol; white www.wago.com/883-7088

Carrier rail

Mounting accessories

**Item no.: 210-198**

Copper carrier rail; 35 x 15 mm; 2.3 mm thick; 2 m long; unslotted; according to EN 60715; copper-colored www.wago.com/210-198

Mounting

Mounting accessories

**Item no.: 249-117**

Screwless end stop; 10 mm wide; for DIN-rail 35 x 15 and 35 x 7.5; gray www.wago.com/249-117

Subject to changes. Please also observe the further product documentation!

WAGO GmbH & Co. KG

Hansastr. 27

32423 Minden

Phone: +49571 887-0 | Fax: +49571 887-169

Email: info.de@wago.com | Web: www.wago.com

Do you have any questions about our products?

We are always happy to take your call at +49 (571) 887-44222.



Item no.: 249-197

Screwless end stop; 14 mm wide; for DIN-rail 35 x 15 and 35 x 7.5; gray

www.wago.com/249-197

Connector

Insertion plate



Item no.: 883-7099

Insertion plate for flat cables; for 883 Series; 70 mm²; silver-colored

www.wago.com/883-7099

Tool

Operating tool



Item no.: 855-8000

Allen wrench; with a partially insulated shaft

www.wago.com/855-8000

Downloads

Documentation

Bid Text

883-7007	xml	Download
X81 - Datei	4.5 kB	

883-7007	docx	Download
docx - Datei	14.0 kB	

Additional Information

Technical Section	pdf	Download
Technical explanations	2.2 MB	

Aluminum Conductors	pdf	Download
Terminating Aluminum Conductors	85.1 kB	

CAD/CAE-Data

CAD data

2D/3D Models 883-7007	URL	Download
-----------------------	-----	----------

CAE data

ZUKEN Portal 883-7007	URL	Download
-----------------------	-----	----------

Subject to changes. Please also observe the further product documentation!

Environmental Product Compliance

Compliance Search

Environmental Product Compliance 883-7007

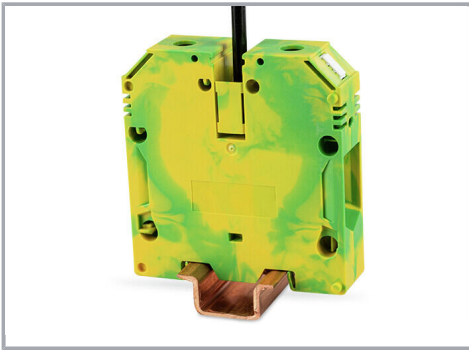
URL

Download

2-conductor ground terminal block; 70 mm²; SCREW CLAMP CONNECTION; 70,00 mm²; green-yellow

Installation Notes

Installation



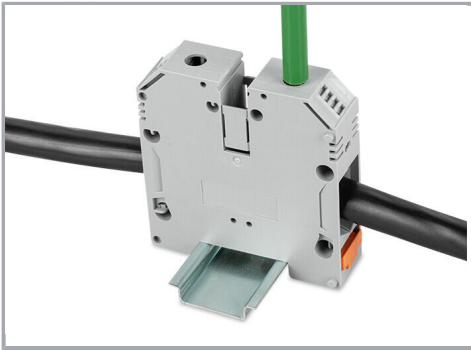
Mounting and Removing Ground Terminal Blocks

Installation is performed by placing the ground conductor terminal block on the copper DIN-rail and then securing it by tightening the Allen screw in the jumper slot using a 6 mm T-wrench. The DIN-rail is contacted via the ground foot.

Removal is performed by loosening the Allen screw in the jumper slot and tilting it off the DIN-rail.

Conductor termination

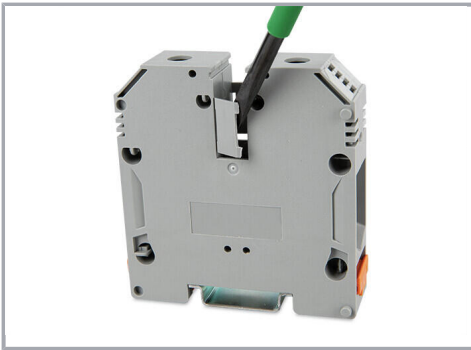
Subject to changes. Please also observe the further product documentation!



Conductor Termination and Clamping Point Actuation

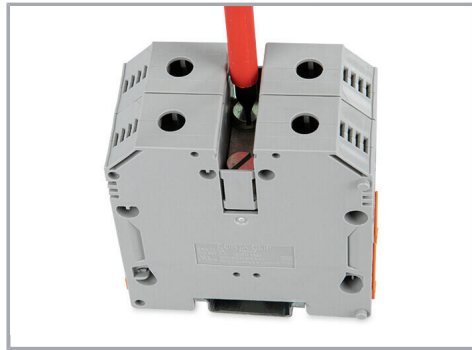
The stripped conductor is inserted into the clamping unit until it hits the backstop. By turning the screw to the right with a 6 mm T-wrench, the conductor is indirectly pressed against the current bar via the clamping bracket.

Commoning



Commoning

Step 1: Remove the inner partitions at the defined break points.



Commoning

Step 2: Insert the jumper into the jumper slot and tighten the screws with a slotted screwdriver. The jumpers are designed for the rated current of the screw terminal block.

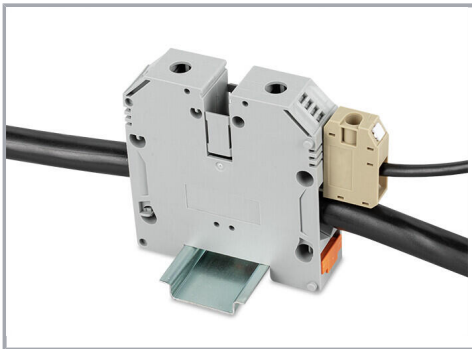
Subject to changes. Please also observe the further product documentation!



Insertion Plate

To connect flat cables, the insertion plates are mounted into the clamping bracket to compensate for the V-shaped geometry and provide a secure conductor connection.

Power tap



Power Tap

The power tap is inserted into the slot above the conductor entry and pressed indirectly against the current bar via the clamping bracket when the clamping point is actuated.

Cover

Subject to changes. Please also observe the further product documentation!



Protective Warning Marker

The warning covers marked with a lightning arrow (high voltage) are snapped onto the screw terminal block from above and close the actuation slot. This safeguard prevents actuation of the clamping point under voltage and guarantees protection against accidental contact.

Testing



Testing

Voltage measurements can be performed via the screw heads in the actuation slot (e.g., via 2-pole 206-707 Voltage Tester).

Marking

Subject to changes. Please also observe the further product documentation!



Marking

The 2009-198 Marker Carrier allows marking strips to be used.



Marking

The screw terminal blocks can be labeled quickly and easily with the WMB Inline marking system. The markers are inserted into the receptacles provided for this purpose.

Subject to changes. Please also observe the further product documentation!