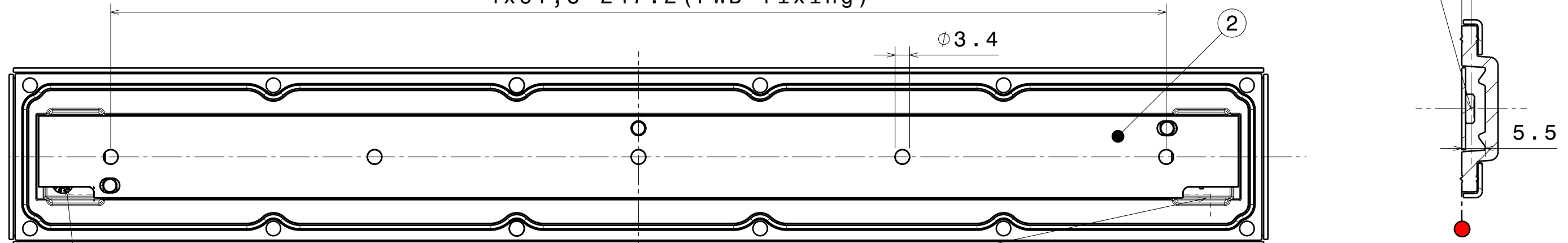


Scale: 1:1

Optical reference point: 2.2 mm from heatsink level. Choose PCB thickness to match LED focal point to the optical reference.

4x61,8=247.2 (PWB fixing)



Scale: 1:1

FN17818\_VIOLET-12X1-W  
COMPONENTS

Section cut A-A  
Scale: 1:1

INDEX	PART	TYPE	MATERIAL	COLOR / COATING
1	F17817_VIOLET-12X1-W	LENS	SILICONE	Clear
2	Violet_PCB_	PCB		
3	F17192_VIOLET-12x1-FRAME	FRAME	STEEL	Metal

Leads through cooling profile

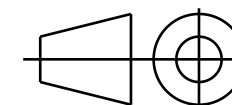
**MECHANICAL DRAWING**

PRODUCT  
FN17818\_VIOLET-12X1-W

**LEDiL**®

Plastic moulding general tolerances according to DIN 16901-130 and applies if not otherwise shown in the drawing. Silicone moulding general tolerances according to ISO 3302-1 Class M3 and applies if not otherwise shown in the drawing.

FIRST ANGLE PROJECTION:



This drawing is the property of LEDiL Oy. It may not be copied or otherwise distributed without prior written permission from LEDiL Oy.

SCALE 1:1

WEIGHT 90 g

A3 SHEET 1/1

**Notes**

	PCB or heatsink level.
	LED location
	Ensure LED fitting from a product specific 3D model available from <a href="http://www.ledil.com">www.ledil.com</a>
	For more details about installation please see LEDiL Installation Guide on <a href="http://www.ledil.com">www.ledil.com</a>