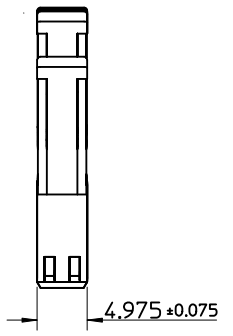
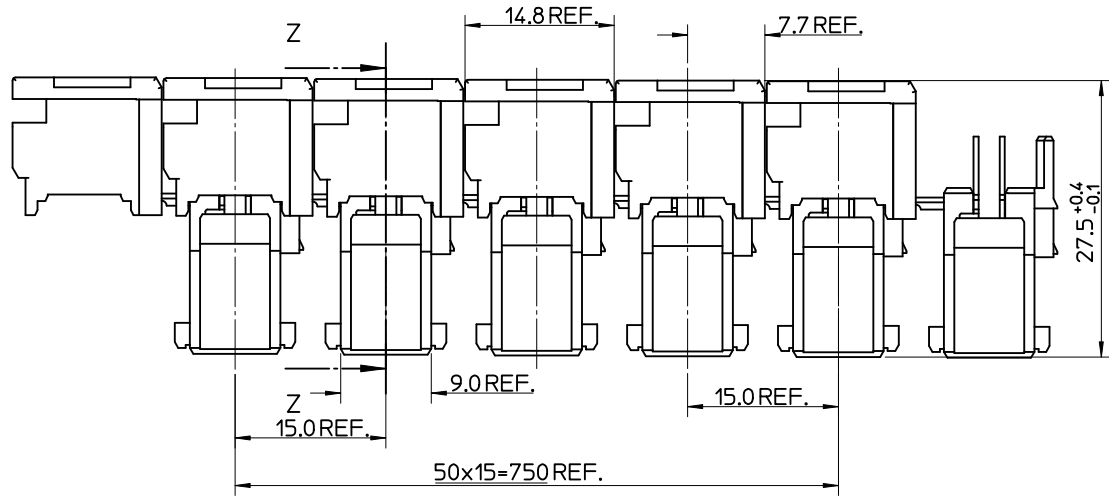
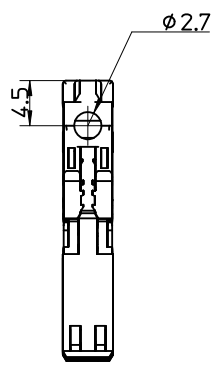
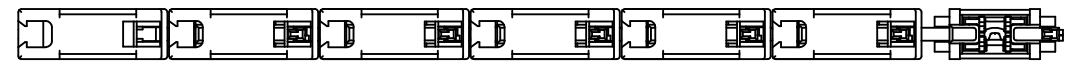
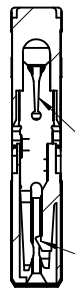


10 9 8 7 6 5 4 3 2 1

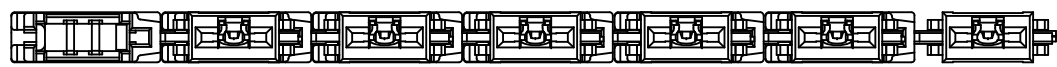


Z-Z



IDT TAKES 1.00mm²
CABLE SEE APPLICATION
SPECIFICATION AS-99033-0004

LOCKING TAB



NOTES:

1. MATERIALS:
HOUSING: PA66 UL94 V-0
TERMINAL: COPPER ALLOY, 0.5 REF THICK
PLATING: OPTION 1: 5um MIN PURE Sn ALL OVER
 OPTION 2: 2um MIN SILVER IN CONTACT AREA
 0.05um MIN SILVER FLASH ALLOVER
2. PRODUCT CONFORMS TO SPECIFICATION PS-99020-0037
3. PACKAGING SPECIFICATION SEE SPEC PK-90833-001
4. REFER TO APPLICATION SPECIFICATION AS-99033-0004

ORIGINAL RELEASE	2010/08/30	QUALITY SYMBOLS
EC NO: E2011-0085	DRWN: BRUTTLE	▼=0
CHKD: 2010/09/13	APPR: BMAGUIRE	▽=0
REV	DESCRIPTION	

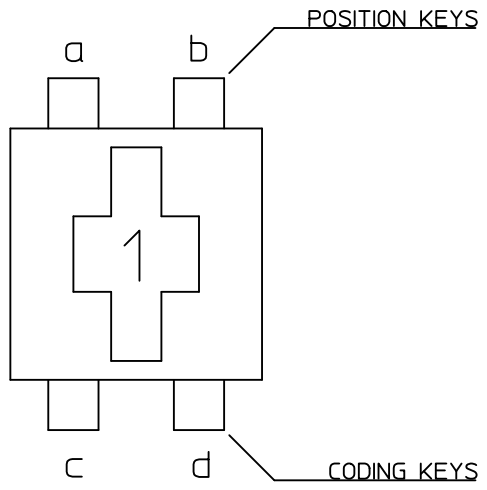
GENERAL TOLERANCES (UNLESS SPECIFIED)	
mm	INCH
4 PLACES ± ---	± ---
3 PLACES ± ---	± ---
2 PLACES ± 0.05	± ---
1 PLACE ± 0.10	± ---
ANGULAR ± 2 °	
DRAFT WHERE APPLICABLE MUST REMAIN WITHIN DIMENSIONS	

DIMENSION STYLE	
MM ONLY	
DRAWN BY	DATE
B. RUTTLE	2009/03/03
CHECKED BY	DATE
T. TOURISH	2009/03/03
APPROVED BY	DATE
BMAGUIRE	2009/03/03
MATERIAL NO.	
SEE SHEET 2	

SCALE	DESIGN UNITS	THIRD ANGLE PROJECTION
2:1	METRIC	
TITLE		
5MM APPLI-MATE 1CKT 12A FEMALE CONNECTOR V0 HWI HOUSING		
MOLEX INCORPORATED		
DOCUMENT NO.		SHEET NO.
SD-93277-001		1 OF 2
THIS DRAWING CONTAINS INFORMATION THAT IS PROPRIETARY TO MOLEX INCORPORATED AND SHOULD NOT BE USED WITHOUT WRITTEN PERMISSION		

9 8 7 6 5 4 3 2 1

MOLEX PART NUMBER	TERMINAL (see note1 sheet1)	COLOUR	POSITION KEYS	CODING KEYS	CONFIGURATION	REF.
93277-0102	OPTION 1 (TIN)	BLACK	b	c d		K02
93277-3102	OPTION 2 (SILVER)					
93277-0103	OPTION 1 (TIN)	BLACK	NONE	NONE		K**
93277-3103	OPTION 2 (SILVER)					
93277-0104	OPTION 1 (TIN)	BLACK	NONE	c		K11
93277-3104	OPTION 2 (SILVER)					
93277-0105	OPTION 1 (TIN)	BLACK	a	c		K09
93277-3105	OPTION 2 (SILVER)					
93277-0106	OPTION 1 (TIN)	BLACK	a, b	c, d		K00
93277-3106	OPTION 2 (SILVER)					
93277-0107	OPTION 1 (TIN)	BLACK	a, b	d		K01
93277-3107	OPTION 2 (SILVER)					



SEE SHEET 1 EC NO: E2011-0085 DRWN: BRUTTLE 2010/08/30 CHKD: 2010/09/13 APPR: BMAGUIRE 2010/09/21	QUALITY SYMBOLS	GENERAL TOLERANCES (UNLESS SPECIFIED)	DIMENSION STYLE	SCALE	DESIGN UNITS	THIRD ANGLE PROJECTION															
	$\blacktriangledown = 0$ $\triangleleft = 0$	<table border="1"> <thead> <tr> <th></th> <th>mm</th> <th>INCH</th> </tr> </thead> <tbody> <tr> <td>4 PLACES</td> <td>± ---</td> <td>± ---</td> </tr> <tr> <td>3 PLACES</td> <td>± ---</td> <td>± ---</td> </tr> <tr> <td>2 PLACES</td> <td>± 0.05</td> <td>± ---</td> </tr> <tr> <td>1 PLACE</td> <td>± 0.10</td> <td>± ---</td> </tr> </tbody> </table>		mm	INCH	4 PLACES	± ---	± ---	3 PLACES	± ---	± ---	2 PLACES	± 0.05	± ---	1 PLACE	± 0.10	± ---	MM ONLY	2:1	METRIC	
		mm	INCH																		
	4 PLACES	± ---	± ---																		
3 PLACES	± ---	± ---																			
2 PLACES	± 0.05	± ---																			
1 PLACE	± 0.10	± ---																			
DESCRIPTION	<table border="1"> <thead> <tr> <th>DRAWN BY</th> <th>DATE</th> <th>TITLE</th> </tr> </thead> <tbody> <tr> <td>B. RUTTLE</td> <td>2009/03/03</td> <td rowspan="2">5MM APPLI-MATE 1CKT 12A FEMALE CONNECTOR V0 HWI HOUSING</td> </tr> <tr> <td>T. TOURISH</td> <td>2009/03/03</td> </tr> </tbody> </table>	DRAWN BY	DATE	TITLE	B. RUTTLE	2009/03/03	5MM APPLI-MATE 1CKT 12A FEMALE CONNECTOR V0 HWI HOUSING	T. TOURISH	2009/03/03	<table border="1"> <thead> <tr> <th>APPROVED BY</th> <th>DATE</th> </tr> </thead> <tbody> <tr> <td>BMAGUIRE</td> <td>2009/03/03</td> </tr> </tbody> </table>	APPROVED BY	DATE	BMAGUIRE	2009/03/03	MOLEX INCORPORATED						
DRAWN BY	DATE	TITLE																			
B. RUTTLE	2009/03/03	5MM APPLI-MATE 1CKT 12A FEMALE CONNECTOR V0 HWI HOUSING																			
T. TOURISH	2009/03/03																				
APPROVED BY	DATE																				
BMAGUIRE	2009/03/03																				
REV	DRAFT WHERE APPLICABLE MUST REMAIN WITHIN DIMENSIONS	MATERIAL NO. SEE CHART DOCUMENT NO. SD-93277-001 SHEET NO. 2 OF 2	THIS DRAWING CONTAINS INFORMATION THAT IS PROPRIETARY TO MOLEX INCORPORATED AND SHOULD NOT BE USED WITHOUT WRITTEN PERMISSION																		