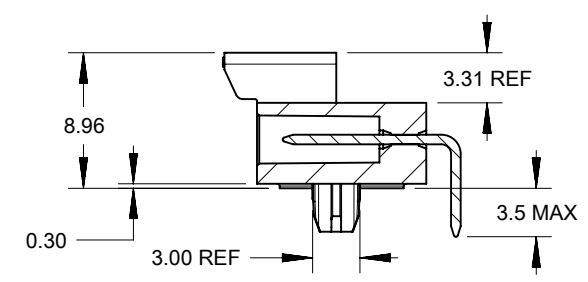
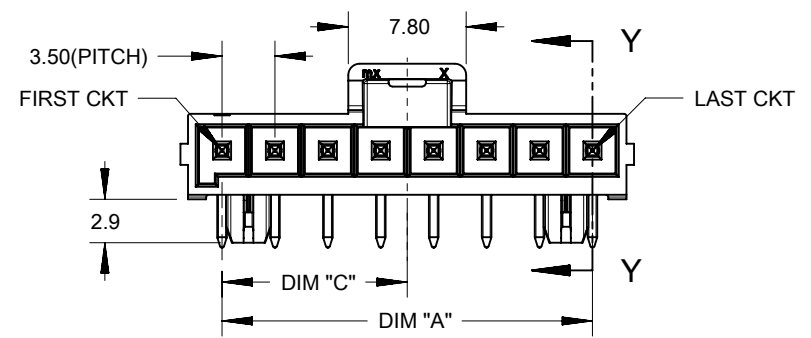
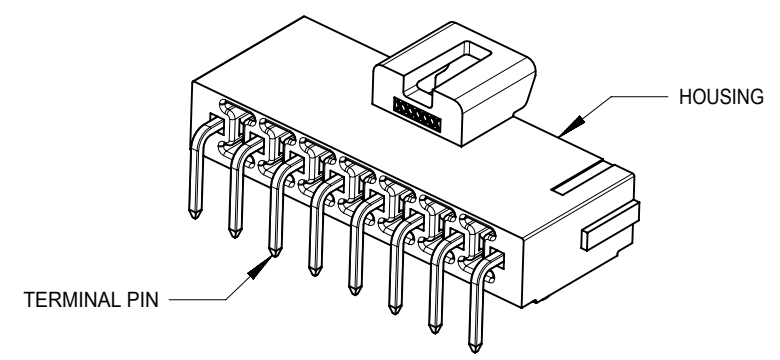
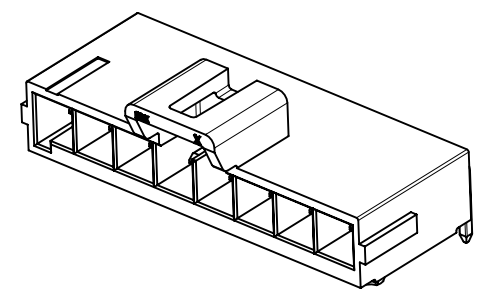
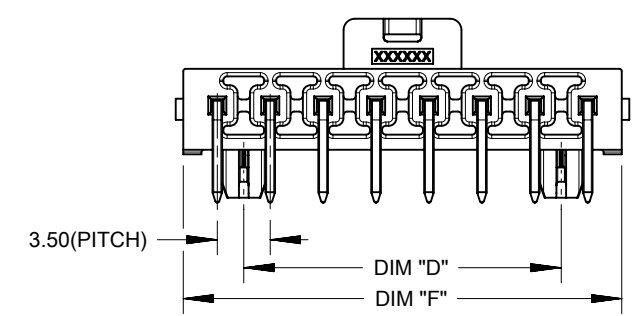


FIRST CIRCUIT MARK  
(NOT SHOWING ON 2  
AND 3 CIRCUITS SERIES)

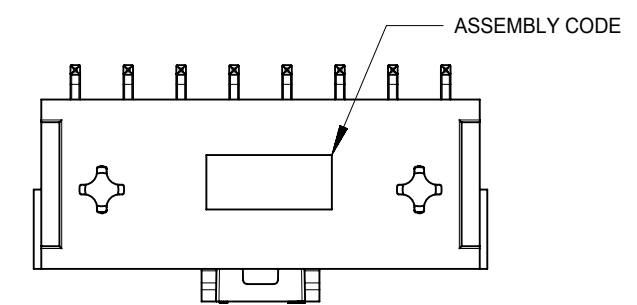
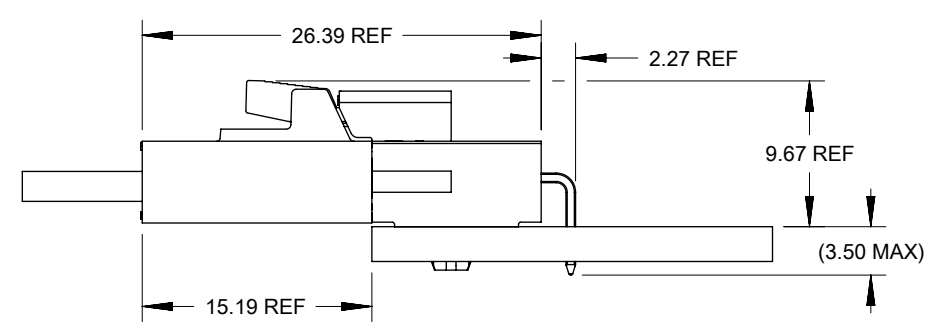


SECTION Y-Y



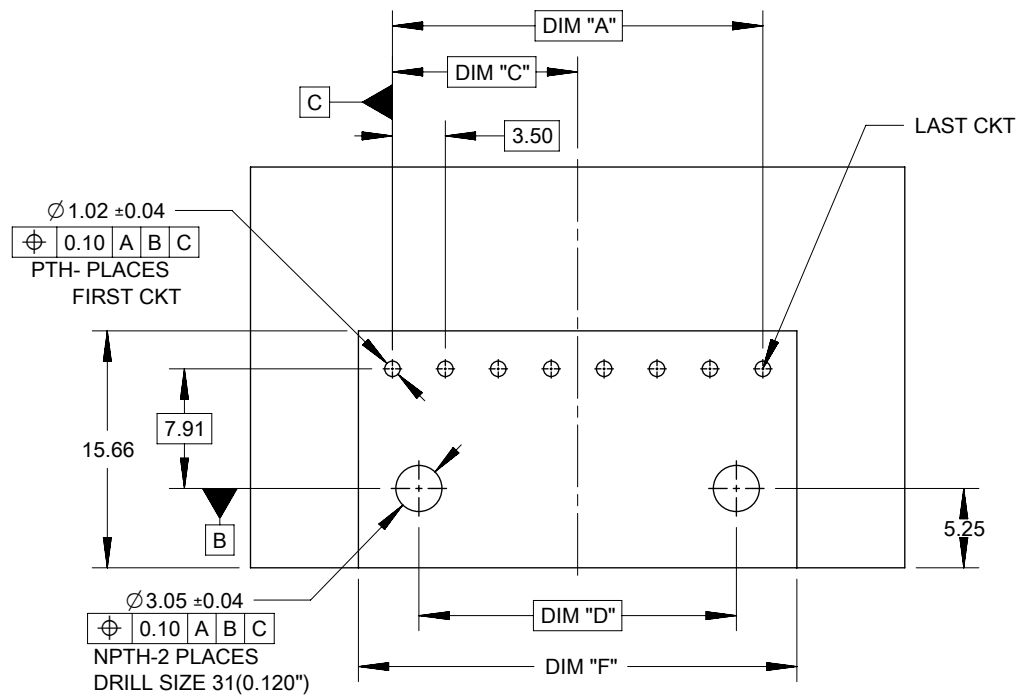
NOTES:

1. MATERIAL :  
HOUSING  
OPTION 1: LCP BLACK, UL94 V-0  
OPTION 2: LCP NATURAL, UL94 V-0  
TERMINAL: COPPER ALLOY
2. PLATING FINISH:  
OPTION 1 - 1.5µm(60µin)-2.5µm(100µin) TIN OVER  
1.25µm(50µin)-2.5µm(100µin) NICKEL OVERALL  
OPTION 2 - 0.35µm(15µin) GOLD CONTACT AREA,  
1.5µm(60µin)-2.5µm(100µin) TIN TAIL AREA OVER  
1.25µm(50µin)-2.5µm(100µin) NICKEL OVERALL  
OPTION 3 - 0.70µm(30µin) GOLD CONTACT AREA,  
1.5µm(60µin)-2.5µm(100µin) TIN TAIL AREA OVER  
1.25µm(50µin)-2.5µm(100µin) NICKEL OVERALL
2. PARTS TO BE PACKAGED PER PK-172310-9001
3. PRODUCT SPECIFICATION PS-172323-0001
4. PART MATES WITH MOLEX RECEPTACLE HOUSING  
172256 AND 172260
5. PART CONFORMS TO CLASS "C" REQUIREMENTS OF SPECIFICATION  
PS-45499-002 WITH 0.13 MM MAXIMUM FLASH ALLOWED IN CORE  
HOLES AND FRONT SURFACE.
6. DISCOLORATION IN THE BANDOLIER AREA OF THE PIN IS  
INHERENT TO THE PLATING PROCESS AND IS DUE TO THE MASKING  
EFFECT OF THE CARRIER. THIS DISCOLORATION IS IN A NON-FUNCTIONAL  
AREA OF THE PIN AND WILL NOT AFFECT THE PERFORMANCE OF THE  
HEADER ASSEMBLY.
7. ASSEMBLY SPECIFICATION: AS-172323-0001

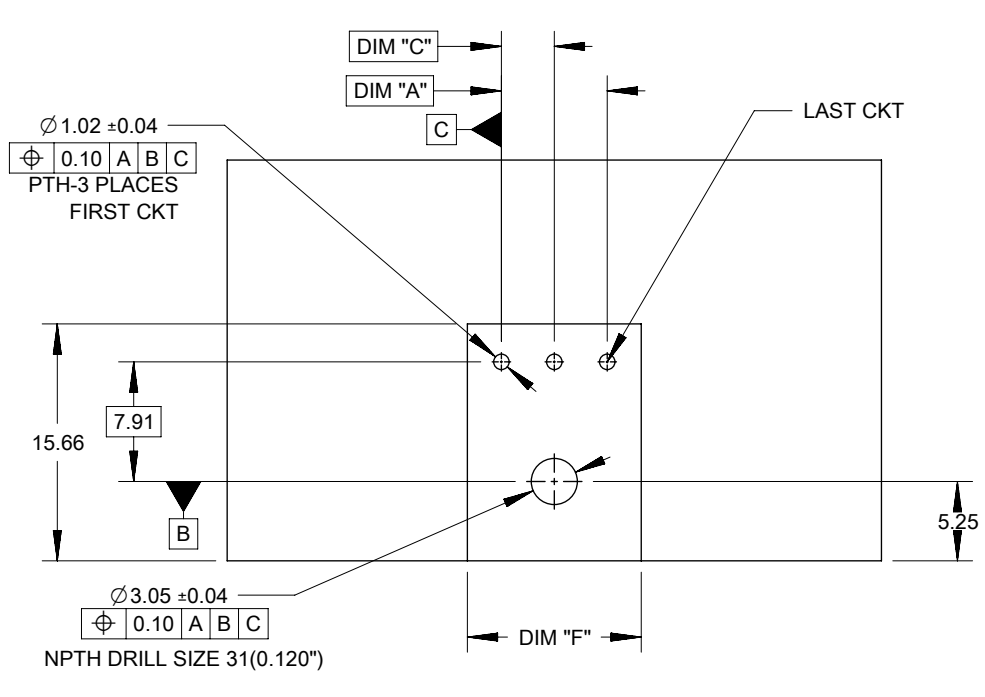


DOCUMENT STATUS	P1	RELEASE DATE	2022/01/26	13:35:15
-----------------	----	--------------	------------	----------

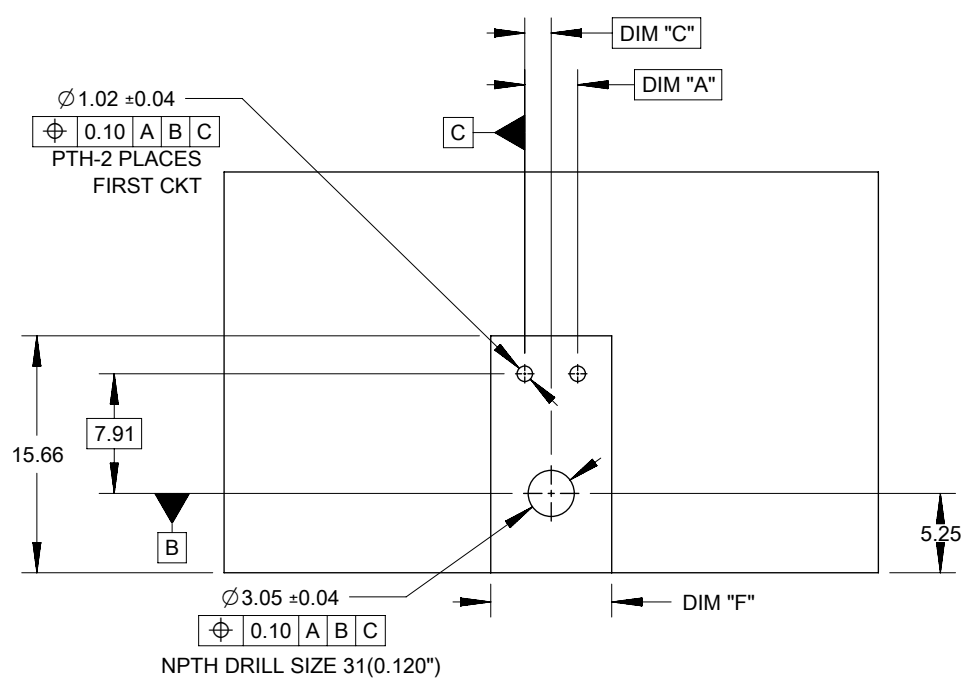
FUNCTIONAL SYMBOLS	THIS DRAWING CONTAINS INFORMATION THAT IS PROPRIETARY TO MOLEX ELECTRONIC TECHNOLOGIES, LLC AND SHOULD NOT BE USED WITHOUT WRITTEN PERMISSION		CURRENT REV DESC:		<b>molex</b>			
	△/A = 0	mm						
DIVISIONAL SYMBOLS	GENERAL TOLERANCES (UNLESS SPECIFIED)		EC NO: 693449		ULTRA-FIT R/A HEADER 2-8 CKTS SINGLE ROW			
	△/E = 0			DRWN: GLLI				
DIVISIONAL SYMBOLS	△/F = 0	ANGULAR TOL ± °	2022/01/19		PRODUCT CUSTOMER DRAWING			
	△/G = 0			2022/01/26				
	4 PLACES ±			2022/01/26				
	3 PLACES ±			INITIAL REVISION:				
	2 PLACES ± 0.25			DRWN: DROSCA				
1 PLACE ± 0.5			2014/03/05	2014/04/24	DOCUMENT NUMBER	DOC TYPE	DOC PART	REVISION
0 PLACES ±			APPR: JCOMERCI	2014/04/24	SD-172310-1000	PSD	000	C3
DRAFT WHERE APPLICABLE MUST REMAIN WITHIN DIMENSIONS		THIRD ANGLE PROJECTION	DRAWING	SERIES	MATERIAL NUMBER	CUSTOMER		SHEET NUMBER
		⊕	A3-SIZE	172310		GENERAL MARKET		1 OF 3



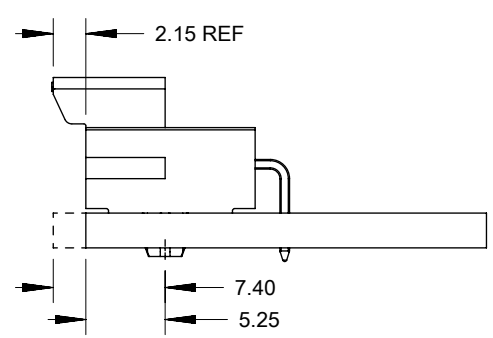
PCB LAYOUT 4,5,6,7 AND 8 COMPONENT SIDE  
RECOMENDED PCB THICKNESS 1.60MM-2.40MM



PCB LAYOUT 3 CIRCUIT COMPONENT SIDE  
RECOMENDED PCB THICKNESS 1.60MM-2.40MM



PCB LAYOUT 2 CIRCUIT COMPONENT SIDE  
RECOMENDED PCB THICKNESS 1.60MM-2.40MM



OPTION 1: LATCH FLUSH WITH PCB EDGE  
OPTION 2: HOUSING BODY FLUSH WITH PCB EDGE

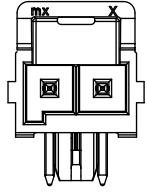
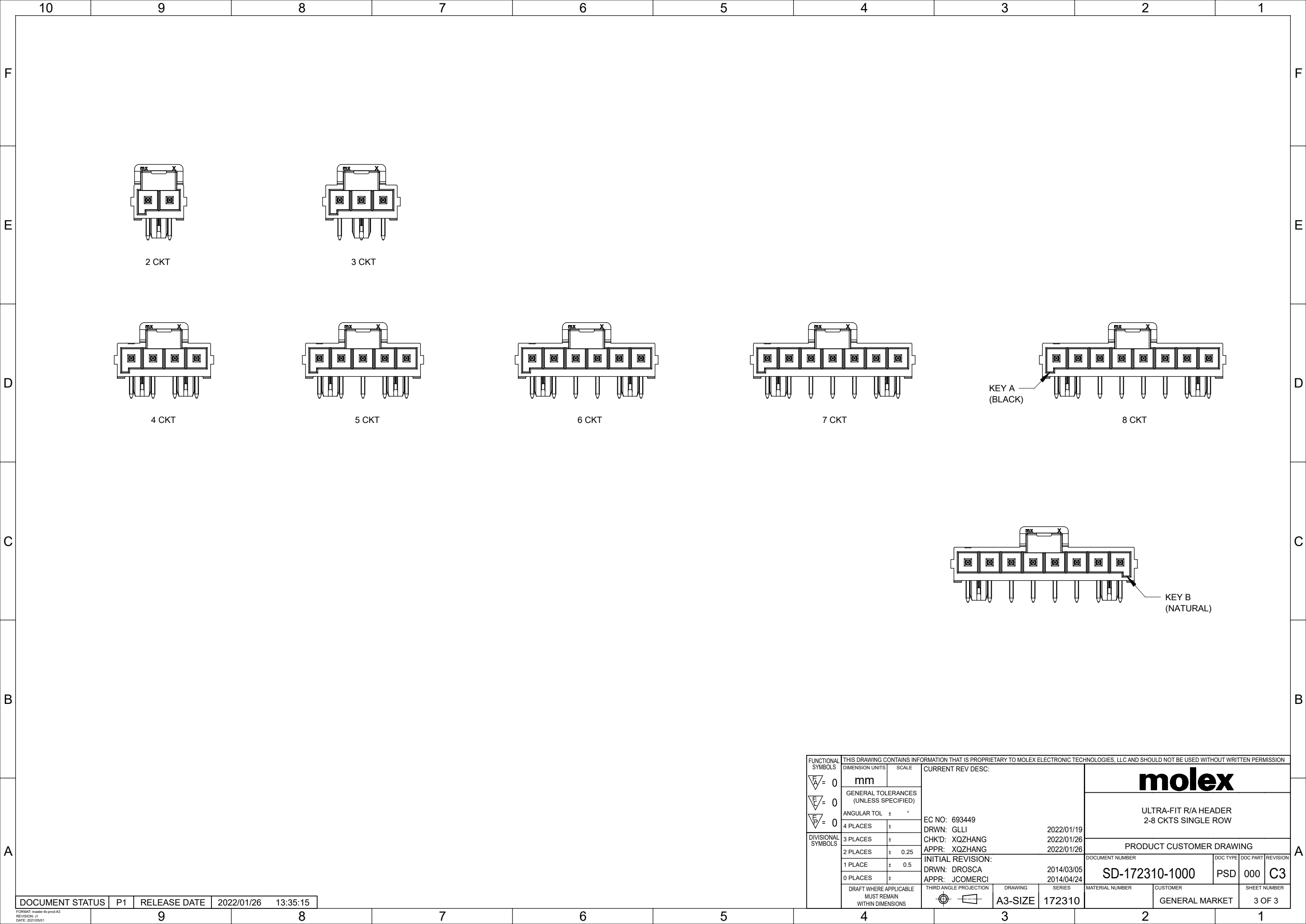
NOTE: DATUM -A- IS ON PCB COMPONENT SIDE

TIN PLATING							
PART NO.	COLOR	CIRCUIT SIZE	KEY OPTION	DIM A	DIM F	DIM C	DIM D
172310-1102	BLACK	2	KEY A	3.50	8.00	1.75	0.00
172310-1103	BLACK	3	KEY A	7.00	11.50	3.50	0.00
172310-1104	BLACK	4	KEY A	10.50	15.00	5.25	7.00
172310-1105	BLACK	5	KEY A	14.00	18.50	7.00	10.50
172310-1106	BLACK	6	KEY A	17.50	22.00	8.75	14.00
172310-1107	BLACK	7	KEY A	21.00	25.50	10.50	17.50
172310-1108	BLACK	8	KEY A	24.50	29.00	12.25	21.00
172310-2102	NATURAL	2	KEY B	3.50	8.00	1.75	0.00
172310-2103	NATURAL	3	KEY B	7.00	11.50	3.50	0.00
172310-2104	NATURAL	4	KEY B	10.50	15.00	5.25	7.00
172310-2105	NATURAL	5	KEY B	14.00	18.50	7.00	10.50
172310-2106	NATURAL	6	KEY B	17.50	22.00	8.75	14.00
172310-2107	NATURAL	7	KEY B	21.00	25.50	10.50	17.50
172310-2108	NATURAL	8	KEY B	24.50	29.00	12.25	21.00

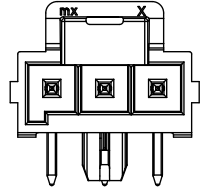
15 MICROINCH GOLD PLATING							
PART NO.	COLOR	CIRCUIT SIZE	KEY OPTION	DIM A	DIM F	DIM C	DIM D
172310-1202	BLACK	2	KEY A	3.50	8.00	1.75	0.00
172310-1203	BLACK	3	KEY A	7.00	11.50	3.50	0.00
172310-1204	BLACK	4	KEY A	10.50	15.00	5.25	7.00
172310-1205	BLACK	5	KEY A	14.00	18.50	7.00	10.50
172310-1206	BLACK	6	KEY A	17.50	22.00	8.75	14.00
172310-1207	BLACK	7	KEY A	21.00	25.50	10.50	17.50
172310-1208	BLACK	8	KEY A	24.50	29.00	12.25	21.00
172310-2202	NATURAL	2	KEY B	3.50	8.00	1.75	0.00
172310-2203	NATURAL	3	KEY B	7.00	11.50	3.50	0.00
172310-2204	NATURAL	4	KEY B	10.50	15.00	5.25	7.00
172310-2205	NATURAL	5	KEY B	14.00	18.50	7.00	10.50
172310-2206	NATURAL	6	KEY B	17.50	22.00	8.75	14.00
172310-2207	NATURAL	7	KEY B	21.00	25.50	10.50	17.50
172310-2208	NATURAL	8	KEY B	24.50	29.00	12.25	21.00

30 MICROINCH GOLD PLATING							
PART NO.	COLOR	CIRCUIT SIZE	KEY OPTION	DIM A	DIM F	DIM C	DIM D
172310-1302	BLACK	2	KEY A	3.50	8.00	1.75	0.00
172310-1303	BLACK	3	KEY A	7.00	11.50	3.50	0.00
172310-1304	BLACK	4	KEY A	10.50	15.00	5.25	7.00
172310-1305	BLACK	5	KEY A	14.00	18.50	7.00	10.50
172310-1306	BLACK	6	KEY A	17.50	22.00	8.75	14.00
172310-1307	BLACK	7	KEY A	21.00	25.50	10.50	17.50
172310-1308	BLACK	8	KEY A	24.50	29.00	12.25	21.00
172310-2302	NATURAL	2	KEY B	3.50	8.00	1.75	0.00
172310-2303	NATURAL	3	KEY B	7.00	11.50	3.50	0.00
172310-2304	NATURAL	4	KEY B	10.50	15.00	5.25	7.00
172310-2305	NATURAL	5	KEY B	14.00	18.50	7.00	10.50
172310-2306	NATURAL	6	KEY B	17.50	22.00	8.75	14.00
172310-2307	NATURAL	7	KEY B	21.00	25.50	10.50	17.50
172310-2308	NATURAL	8	KEY B	24.50	29.00	12.25	21.00

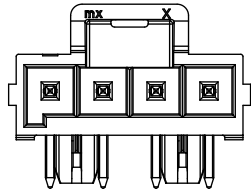
FUNCTIONAL SYMBOLS	THIS DRAWING CONTAINS INFORMATION THAT IS PROPRIETARY TO MOLEX ELECTRONIC TECHNOLOGIES, LLC AND SHOULD NOT BE USED WITHOUT WRITTEN PERMISSION	CURRENT REV DESC:				
	DIMENSION UNITS: <b>mm</b> SCALE: GENERAL TOLERANCES (UNLESS SPECIFIED) ANGULAR TOL ± ° 4 PLACES ± 3 PLACES ± 2 PLACES ± 0.25 1 PLACE ± 0.5 0 PLACES ±	EC NO: 693449 DRWN: GLLI CHK'D: XQZHANG APPR: XQZHANG INITIAL REVISION: DRWN: DROSCA APPR: JCOMERCI			2022/01/19 2022/01/26 2022/01/26	
DIVISIONAL SYMBOLS	DRAFT WHERE APPLICABLE MUST REMAIN WITHIN DIMENSIONS	THIRD ANGLE PROJECTION	DRAWING	SERIES		
			A3-SIZE	172310		
		DOCUMENT NUMBER		DOC TYPE	DOC PART	REVISION
		SD-172310-1000		PSD	000	C3
		MATERIAL NUMBER		CUSTOMER		SHEET NUMBER
				GENERAL MARKET		2 OF 3



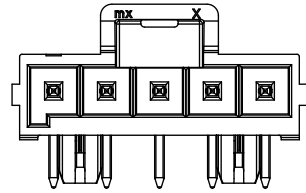
2 CKT



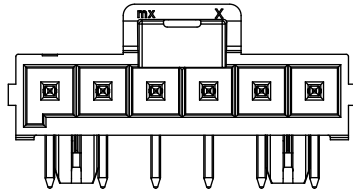
3 CKT



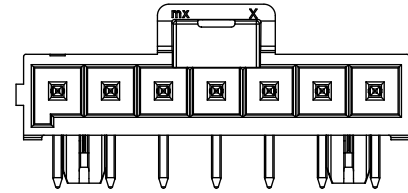
4 CKT



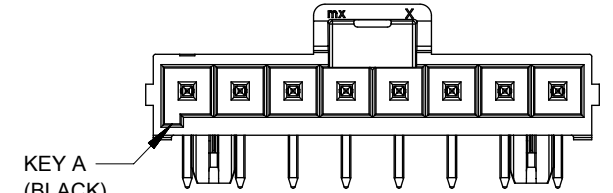
5 CKT



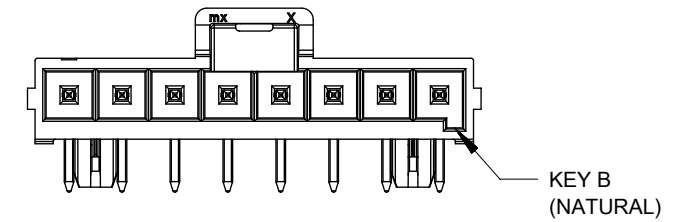
6 CKT



7 CKT



8 CKT



KEY B  
(NATURAL)

FUNCTIONAL SYMBOLS	THIS DRAWING CONTAINS INFORMATION THAT IS PROPRIETARY TO MOLEX ELECTRONIC TECHNOLOGIES, LLC AND SHOULD NOT BE USED WITHOUT WRITTEN PERMISSION		CURRENT REV DESC:		<b>molex</b>			
	DIMENSION UNITS	SCALE						
$\nabla_A = 0$	mm		EC NO: 693449 DRWN: GLLI 2022/01/19 CHK'D: XQZHANG 2022/01/26 APPR: XQZHANG 2022/01/26		<b>ULTRA-FIT R/A HEADER 2-8 CKTS SINGLE ROW</b>			
GENERAL TOLERANCES (UNLESS SPECIFIED)								
$\nabla_F = 0$	ANGULAR TOL ± °							
$\nabla_P = 0$	4 PLACES ±							
DIVISIONAL SYMBOLS	3 PLACES ±		INITIAL REVISION: DRWN: DROSCA 2014/03/05 APPR: JCOMERCI 2014/04/24		PRODUCT CUSTOMER DRAWING			
	2 PLACES ± 0.25				DOCUMENT NUMBER	DOC TYPE	DOC PART	REVISION
	1 PLACE ± 0.5				SD-172310-1000	PSD	000	C3
	0 PLACES ±							
DRAFT WHERE APPLICABLE MUST REMAIN WITHIN DIMENSIONS		THIRD ANGLE PROJECTION	DRAWING	SERIES	MATERIAL NUMBER	CUSTOMER	SHEET NUMBER	
			A3-SIZE	172310		GENERAL MARKET	3 OF 3	

DOCUMENT STATUS	P1	RELEASE DATE	2022/01/26	13:35:15
-----------------	----	--------------	------------	----------