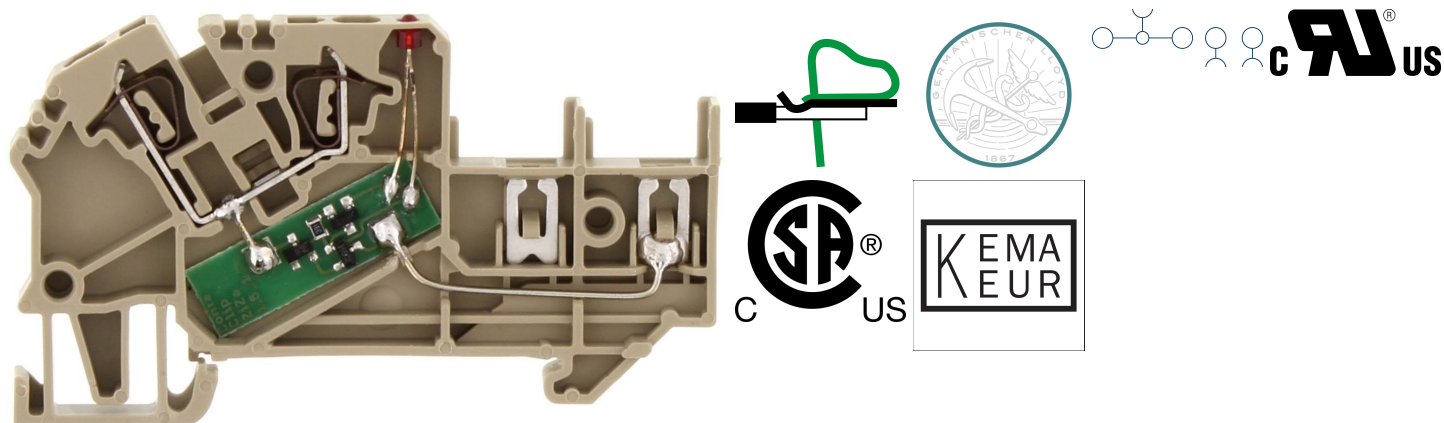


3530.2

ZIZA 1,5/3/LED(RD)/24V BG



Initiator terminal / actuator terminal, Tension-spring connection, Mounting type: Mounting rail TS 35/7.5, Rated cross-section: 1.5 mm², Width: 5.1 mm, Colour: Beige

Business data

Packaging unit	50
Quantity unit	PC
Weight per piece (not including packaging)	7.2 g
Weight per piece (including packaging)	8.06 g
Unit of weight	G
Customs number	85369010
Country of origin	DE
Product description	Initiator terminals / actuator terminals

3530.2

ZIZA 1,5/3/LED(RD)/24V BG

Technical data

Dimensions

Length	68.7 mm
Width	5.1 mm
Height TS 35/7.5	40.5 mm
Pitch	5 mm

Ratings

Rated voltage	400 V
Rated current	17.5 A
Rated cross-section	1.5 mm ²
Rated impulse voltage	4 kV
Overvoltage category	III
Contamination degree	3
Maximum power dissipation for nominal condition	0.56 W

Connection data

Connection principle	Tension-spring connection
Connections	4
Number of terminals per level	4
Number of levels	1
Wire cross-section single-core (rigid) / stranded, min.	0.5 mm ²
Wire cross-section single core (rigid)/stranded, max.	2.5 mm ²
Wire cross-section stranded, min.	0.5 mm ²
Wire cross-section stranded, max.	2.5 mm ²
Wire cross-section stranded with wire-end ferrules, min.	0.5 mm ²
Wire cross-section stranded with wire-end ferrules, max.	1.5 mm ²
Wire cross-section AWG, min.	26
Wire cross-section AWG, max.	14
Stripping length	8 mm

3530.2

ZIZA 1,5/3/LED(RD)/24V BG

Technical data

Materials

Insulation housing	Polyamide 6.6, Polyamide 6.6
Flammability class UL 94	V-0
Working temperature, min.	-40 °C
Working temperature, max.	120 °C

Further technical data

Mounting type	Mounting rail TS 35/7,5
Gauge plug acc. to EN 60 947-1	A1
Number of cross-connection channels	1
End plate required	✓
Can be cross-connected	✓
Colour of lamp	Red

Print

Colour	Beige
--------	-------

Environmental Product Compliance

REACH Conform	yes
REACH Reference date	2022-01-17
REACH Candidate Substance Note	No
RoHS Conform	yes

3530.2

ZIZA 1,5/3/LED(RD)/24V BG

Approvals

CSA approval

CSA approval	C22.2 No 158
CSA approval granted	yes
CSA Usegroup C: rated voltage	300 V
CSA Usegroup C: rated current	12,5 A
CSA wire cross-section AWG, min.	26
CSA wire cross-section AWG, max.	14
CSA stripping length	8 mm

CSAus approval

CSAus approval	UL 1059
CSAus approval granted	yes
CSAus Usegroup C: rated voltage	300 V
CSAus Usegroup C: rated current	12,5 A
CSAus wire cross-section AWG, min.	26
CSAus wire cross-section AWG, max.	14
CSAus stripping length	8 mm

cUL Recognized

cUL approval	C22.2 No 158
cUL Usegroup C: rated voltage	300 V
cUL Usegroup C: rated current	12,5 A
cUL wire cross-section single-core (rigid) AWG, min.	26
cUL wire cross-section single-core (rigid) AWG, max.	14
cUL wire cross-section stranded AWG, min.	26
cUL wire cross-section stranded AWG, max.	14
cUL wire material	Cu
cUL Recognized	yes

3530.2

ZIZA 1,5/3/LED(RD)/24V BG

Approvals

German Lloyd approval

GL approval	IEC 60947-7-1:2009
GL approval granted	yes
GL rated voltage	400 V
GL rated current	17,5 A
GL wire cross-section single core (rigid), min.	2.5 mm ²
GL wire cross-section single-core (rigid), max.	1.5 mm ²
GL wire cross-section, min.	1.5 mm ²
GL wire cross-section stranded, max.	2.5 mm ²
GL environmental category	C

KEMA KEUR approval

KEMA KEUR approval	EN 60947-7-1:2009
KEMA KEUR approval granted	yes
KEMA rated voltage	400 V
KEMA rated current	17,5 A
KEMA rated impulse voltage	4 kV
KEMA wire cross-section single core (rigid), min.	0.5 mm ²
KEMA wire cross-section single-core (rigid), max.	2.5 mm ²
KEMA wire cross-section stranded, min.	0.5 mm ²
KEMA wire cross-section stranded, max.	2.5 mm ²

3530.2

ZIZA 1,5/3/LED(RD)/24V BG

Approvals

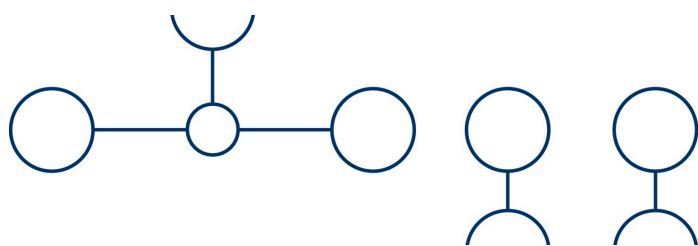
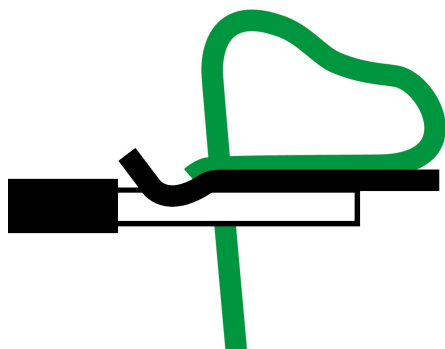
UL Recognized

UL approval	UL 1059
UL Usegroup C: rated voltage	300 V
UL Usegroup C: rated current	12,5 A
UL wire cross-section single-core (rigid) AWG, min.	26
UL wire cross-section single-core (rigid) AWG, max.	14
UL wire cross-section stranded AWG, min.	14
UL wire cross-section stranded AWG, max.	26
UL wire material	Cu
UL factory wiring	yes
UL field wiring	yes
UL Recognized	yes

3530.2

ZIZA 1,5/3/LED(RD)/24V BG

Media

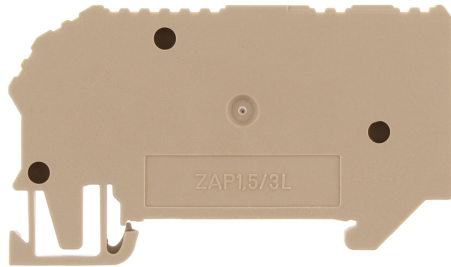


3530.2

ZIZA 1,5/3/LED(RD)/24V BG

Accessories

End plate



End plate, Width: 5.1 mm, Colour: Beige

General order data

Product number:	Article name	GTIN (EAN)	Packaging unit
3746.2	ZAP/TW ZIZA 1,5/3 BG	4044211060558	20 ST

3530.2

ZIZA 1,5/3/LED(RD)/24V BG

Accessories

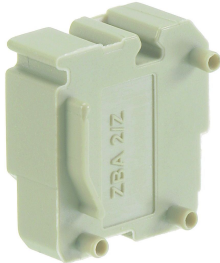
Label holder



Label holder, Pitch size: 5.1 mm, Colour: beige

General order data

Product number:	Article name	GTIN (EAN)	Packaging unit
3786.2	ZBA 2 BG	4044211061128	50 ST



Label holder, Pitch size: 5.1 mm, Colour: beige

General order data

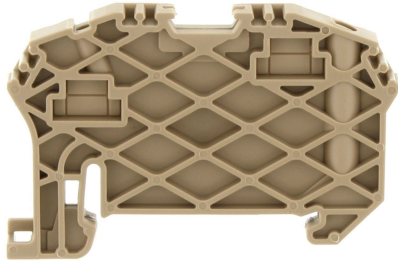
Product number:	Article name	GTIN (EAN)	Packaging unit
3787.2	ZBA 2/Z BG	4044211061135	50 ST

3530.2

ZIZA 1,5/3/LED(RD)/24V BG

Accessories

End stop



End stop, Mounting type: Mounting rail TS 35/7.5 and TS 35/15, Width: 6 mm, Colour: Beige

General order data

Product number:	Article name	GTIN (EAN)	Packaging unit
3748.2	ZES 35 BG	4044211060572	50

3530.2

ZIZA 1,5/3/LED(RD)/24V BG

Accessories

Potential distribution strip



Potential distribution strip, Tension-spring connection, Mounting type: Plug in, Rated cross-section: 1.5 mm², Width: 8.7 mm, Colour: Red-brown

General order data

Product number:	Article name	GTIN (EAN)	Packaging unit
3739.6	ZPL 1,5 RB	4044211060480	100



Potential distribution strip, Tension-spring connection, Mounting type: Plug in, Rated cross-section: 1.5 mm², Width: 8.7 mm, Colour: Green-yellow

General order data

Product number:	Article name	GTIN (EAN)	Packaging unit
3743.2	ZPL 1,5/PE GNYE	4044211060527	100 ST



Potential distribution strip, Tension-spring connection, Mounting type: Plug in, Rated cross-section: 1.5 mm², Width: 8.7 mm, Colour: Yellow

General order data

Product number:	Article name	Creation date 12.03.2022 05:25:42 Subject to technical changes	GTIN (EAN)	Packaging unit
3791.8	ZPL 1,5 YE		4044211061197	100 ST

3530.2

ZIZA 1,5/3/LED(RD)/24V BG

Accessories

Potential distribution strip



Potential distribution strip, Tension-spring connection, Mounting type: Plug in, Rated cross-section: 1.5 mm², Width: 8.7 mm, Colour: Green

General order data

Product number:	Article name	GTIN (EAN)	Packaging unit
3792.1	ZPL 1,5 GN	4044211061203	100 ST



Potential distribution strip, Tension-spring connection, Mounting type: Plug in, Rated cross-section: 1.5 mm², Width: 8.7 mm, Colour: Orange

General order data

Product number:	Article name	GTIN (EAN)	Packaging unit
3793.3	ZPL 1,5 OG	4044211061210	100 ST



Potential distribution strip, Tension-spring connection, Mounting type: Plug in, Rated cross-section: 1.5 mm², Width: 8.7 mm, Colour: Beige

General order data

Product number:	Article name	GTIN (EAN)	Packaging unit
3738.2	ZPL 1,5 BG	4044211060473	100 ST

Creation date 12.03.2022 05:25:42
Subject to technical changes

3530.2

ZIZA 1,5/3/LED(RD)/24V BG

Accessories

Test adapter



Test adapter, Pitch size: 5.1 mm, Colour:
Beige

General order data

Product number:	Article name	GTIN (EAN)	Packaging unit
17034.2	ZTA 1,5	4044211155452	10 ST

3530.2

ZIZA 1,5/3/LED(RD)/24V BG

Accessories

Insulated cross-connector



Insulated cross-connector, No. of poles: 2,
Mounting type: Plug in, Width: 9.1 mm, Rated
cross-section: 2.5 mm², Colour: Yellow

General order data

Product number:	Article name	GTIN (EAN)	Packaging unit
3710.8	ZQI 2,5/2 YE	4044211060282	50



Insulated cross-connector, No. of poles: 99,
Mounting type: Plug in, Width: 500 mm,
Rated cross-section: 2.5 mm², Colour: Yellow

General order data

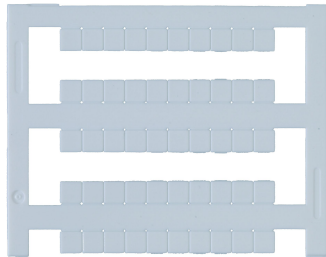
Product number:	Article name	GTIN (EAN)	Packaging unit
3719.8	ZQI 2,5/0,5 m/99 Pole YE	4044211060374	2

3530.2

ZIZA 1,5/3/LED(RD)/24V BG

Accessories

Quick marking



Terminal marker / Pocket Maxicard, Length: 5 mm, Width: 5 mm, Colour: White

General order data

Product number:	Article name	GTIN (EAN)	Packaging unit
4600.7	PMC SB 5/50 WH	4044211088903	500 ST

Screwdriver



Screwdriver with bare blade, Colour: Black-grey

General order data

Product number:	Article name	GTIN (EAN)	Packaging unit
1085.0	SDB 0,5x3,0	4044211014643	1 ST
