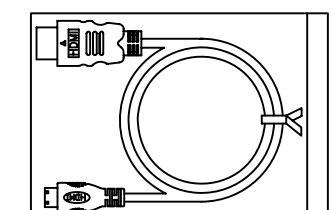
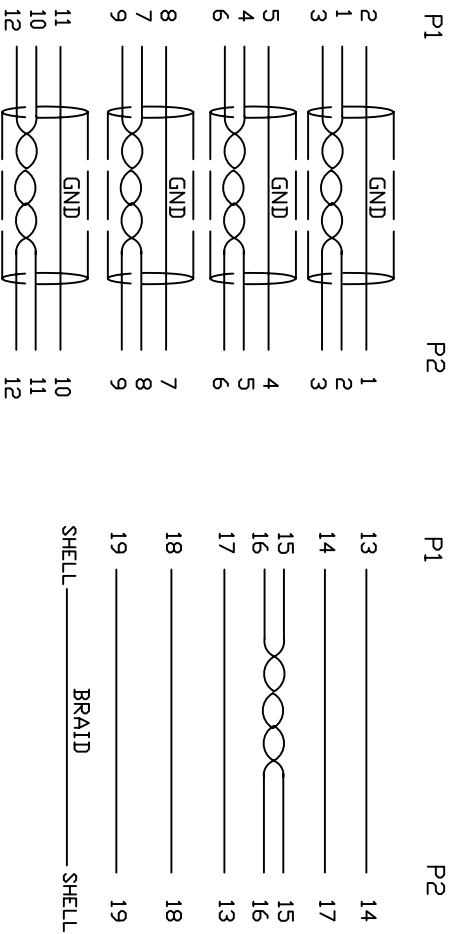


1. Wiring Diagram.



2. Cable test condition :

Open / Short : 100%

Insulation resistance : 5M ohms

Contact resistance : 2 ohm

Hipot : DC 300V / 1 sec

3Each pcs with PE polybag.

7	COPER	W25MM*1.45MM	1		
6	COPER	W20MM*1.35MM	1		
5	PVC	45P PVC BLACK OVERMOLD	25g		
4	PE	LLDPE 500026 6201 INSIDE MOLDING	16g		
3	CONN	HDMI C TYPE MALE PIN G/F ,SHELL PLATED NICKEL, INSULATION BLACK	1	P2	
2	CONN	HDMI A TYPE MALE PIN G/F ,SHELL PLATED NICKEL, INSULATION BLACK	1	P1	
1	CABLE	UL20276 《30AWG (7/0.1TS) *IP+EA+AL/MY》 *4+30AWG (7/0.1TS) *5C +AEM(16/6/0.12AM) OD6.0 BLACK	1	3000mm	
NO.	PART NO.	DESCRIPTION	QTY	UNIT/REF	

BILL OF MATERIAL

A	INITIAL RELEASE	2017/7/26
REVECN#	DESCRIPTION	DATE
Cnc Tech,LLC		
DRAWN	EDWIN LAI	DATE
CHECKED	W. In. C	07/26/17
APPROVAL		
DWG NO.	HDMI A/M TO HDMI C/M CABLE	REV
CUSTOMER P/N:	742-10010-00300	REV
CUSTOMER:		
SHEET	1 OF 1	

