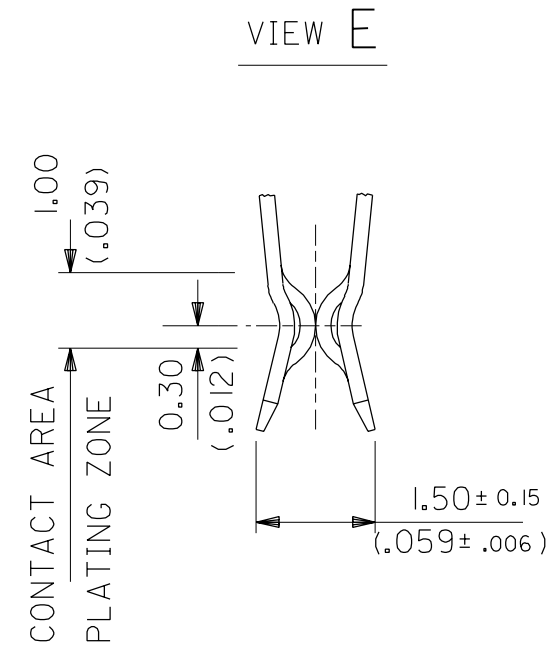
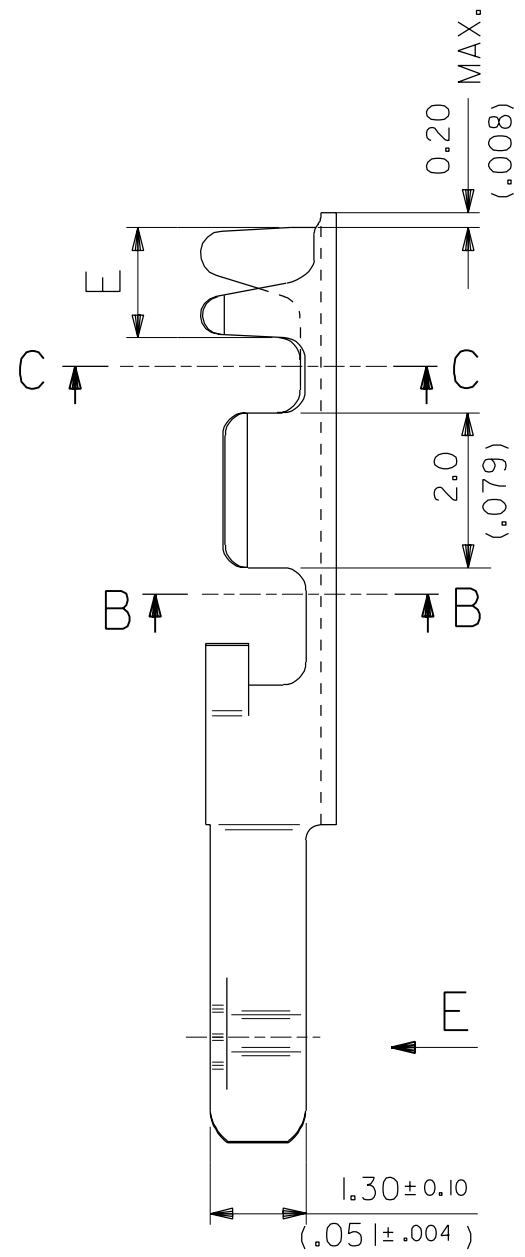


- NOTES :
- MATERIAL : PHOSPHOR BRONZE CuSn6 FB370 (DIN 1777), THICKNESS : (.020) / .008 REF.
  - FOR UNSTATED DIMENSIONS AND PLATING DETAILS, SEE SHEET 2.
  - FOR PART NUMBERS, SEE SHEET 2.
  - FOR WIRE SIZE AND INSULATION DIAMETER, SEE SHEET 2.
  - PRODUCT SPECIFICATION No : PS-99020-0026  
CRIMP SPECIFICATION No : AS-90670



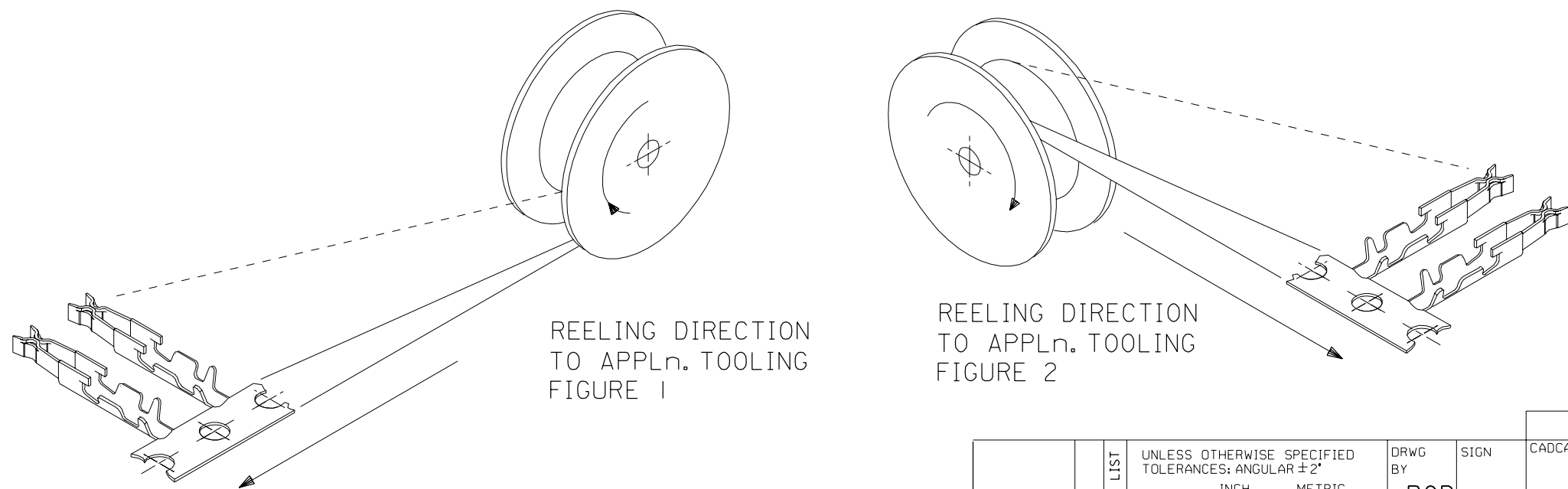
2	E2
1	E2
SH.	REV.

ECN 2588 sheet 2 97-09-15 Er	REVISIONS FOR PREVIOUS REVISIONS SEE MRL LIST	UNLESS OTHERWISE SPECIFIED TOLERANCES: ANGULAR ± 2°		DRWG BY <b>POB</b>	SIGN	CAD/CAM PROJECT NAME S90670X1 DCN		THIS DRAWING CONTAINS INFORMATION THAT IS PROPRIETARY TO MOLEX INC. & SHOULD NOT BE USED WITHOUT WRITTEN PERMISSION	
		3 PLACE ± .	±			TITLE <b>CRIMP CONTACT</b>			
		2 PLACE ± .	± 0.15	CHK'D BY <b>KN</b>	SIGN	SHEET NO. DATE 10F2 91/05/30			
		1 PLACE ±	± 0.20	APP'D BY <b>JB</b>	SIGN	PART NO. DWG NO. SEE CHART SD-90670		SIZE <b>B</b>	
DRAFT WHERE APPLICABLE MUST REMAIN WITHIN DIMENSIONS		DESIGN DIMENSION <input checked="" type="checkbox"/> MM <input type="checkbox"/> IN.		SCALE <b>10:1</b>					
		EQUIVALENT DIMENSION <input type="checkbox"/> MM <input checked="" type="checkbox"/> IN.							
		IF TWO DIMENSIONS ARE SHOWN THE UPPER IS THE DESIGN DIMENSION, LOWER IS SECONDARY							

PART No	WIRE SIZE			INSULATION RANGE	CRIMP DIMENSIONS								CONT.per REEL REELING DIRECTION FIGURE
	STRANDED WIRE CROSS SECTIONS (mm <sup>2</sup> )	SOLID WIRE DIAMETER (mm)	(AWG)		WIRE BARREL			INSULATION BARREL					
					A REF.	B ± 0.10 (.004)	G ± 0.10 (.004)	C REF.	D ± 0.10 (.004)	F ± 0.10 (.004)	E ± 0.15 (.006)		
90670-1003 (C17)	0.05 - 0.18	0.25 - 0.4	26-30	0.60-1.10 (.024-.043)	1.50 (.059)	1.50 (.059)	0.30 (.012)	1.80 (.071)	1.80 (.071)	0.40 (.016)	1.50 (.059)	20 000 2	
90670-2003 (C16)	0.12 - 0.35	0.45 - 0.6	22-26	0.90-1.80 (.035-.071)	1.90 (.075)	1.70 (.067)	0.40 (.016)	2.80 (.110)	2.50 (.098)	0.80 (.031)	1.60 (.063)	15 000 2	
90670-1013 (C17)	0.05 - 0.18	0.25 - 0.4	26-30	0.60-1.10 (.024-.043)	1.50 (.059)	1.50 (.059)	0.30 (.012)	1.80 (.071)	1.80 (.071)	0.40 (.016)	1.50 (.059)	20 000 1	
90670-2013 (C16)	0.12 - 0.35	0.45 - 0.6	22-26	0.90-1.80 (.035-.071)	1.90 (.075)	1.70 (.067)	0.40 (.016)	2.80 (.110)	2.50 (.098)	0.80 (.031)	1.60 (.063)	15 000 1	
90670-3003 (C35)	0.034		32	0.48-0.62 (.019-.024)	1.50 (.059)	1.50 (.059)	0.30 (.012)	1.20 (.047)	1.05 (.041)	0.25 (.010)	1.50 (.059)	20 000 2	
90670-3013 (C35)	0.034		32	0.48-0.62 (.019-.024)	1.50 (.059)	1.50 (.059)	0.30 (.012)	1.20 (.047)	1.05 (.041)	0.25 (.010)	1.50 (.059)	20 000 1	

PLATING

1.5um/(59uin.) MIN. NICKEL ALL OVER.  
0.1um/(4uin.) MIN. GOLD FLASH OVER 1.5 um/(59uin.) MIN. Pd-Ni 80/20 ALLOY IN CONTACT AREA.  
0.1um/(4uin.) MIN. GOLD FLASH ON WIRE CRIMP AREA (outer side of the barrel).



ECN 2588 P/N 90670-3013 97-09-15 Er		REVISIONS FOR PREVIOUS REVISIONS SEE MRI LIST	UNLESS OTHERWISE SPECIFIED TOLERANCES: ANGULAR ± 2°		DRWG BY	SIGN	REVISE ONLY ON CAD SYSTEM		SH.	REV.
			3 PLACE ± .	±	INCH	POB		CADCAM PROJECT NAME S90670X2 DCN		THIS DRAWING CONTAINS INFORMATION THAT IS PROPRIETARY TO MOLEX INC. & SHOULD NOT BE USED WITHOUT WRITTEN PERMISSION
		2 PLACE ± .	± --	METRIC	CHK'D BY	SIGN	TITLE			
		1 PLACE ±	± --		KN		CRIMP CONTACT			
		DRAFT WHERE APPLICABLE MUST REMAIN WITHIN DIMENSIONS			APP'D BY	SIGN	MOLEX MOLEX EUROPE		SHEET NO.	DATE
		DESIGN DIMENSION	<input checked="" type="checkbox"/> MM		JB		20F2		91/05/30	
		EQUIVALENT DIMENSION	<input type="checkbox"/> MM		SCALE	---		PART NO.		SIZE
		IF TWO DIMENSIONS ARE SHOWN THE UPPER IS THE DESIGN DIMENSION, LOWER IS SECONDARY					SEE CHART		SD-90670	