

# RTQ6363GQW, 60V<sub>IN</sub>, 3.5A, Asynchronous Step-Down Converter Evaluation Board

## ***General Description***

The Evaluation Board demonstrates the RTQ6363GQW to be designed for a 5V/3.5A output from a 8V to 60V input at 400kHz switching frequency. The wide input range makes it suitable for communications and industrial 12V, 24V and 48V power systems. The RTQ6363GQW provides complete protection functions such as input under-voltage lockout, output under-voltage protection, over-current protection and thermal shut down. Cycle-by-cycle current limit provides protection against shorted outputs and soft-start eliminates input current surge during start-up.

## **Table of Contents**

General Description .....	1
Performance Sepcification Summary .....	2
Power-up Procedure .....	2
Detailed Description of Hardware .....	3
Bill of Materials .....	5
Typical Applications .....	6
Evaluation Board Layout.....	9
More Information.....	11
Important Notice for Richtek Evaluation Board .....	11

## Performance Specification Summary

Summary of the RTQ6363GQW Evaluation Board performance specification is provided in Table 1. The ambient temperature is 25°C.

Table 1. RTQ6363GQW Evaluation Board Performance Specification Summary

Specification	Test Conditions	Min	Typ	Max	Unit
<b>Input Voltage Range</b>		8	--	60	V
<b>Output Current</b>		0	--	3.5	A
<b>Default Output Voltage</b>		--	5	--	V
<b>Operation Frequency</b>		--	400	--	kHz
<b>Output Ripple Voltage</b>	$I_{OUT} = 3.5A$	--	10	--	mVp-p
<b>Line Regulation</b>	$I_{OUT} = 3.5A, V_{IN} = 8V \text{ to } 60V$	--	$\pm 1$	--	%
<b>Load Regulation</b>	$V_{IN} = 12V, I_{OUT} = 0.001A \text{ to } 3.5A$	--	$\pm 1$	--	%
<b>Load Transient Response</b>	$I_{OUT} = 1.75A \text{ to } 3.5A$	--	$\pm 5$	--	%
<b>Maximum Efficiency</b>	$V_{IN} = 12V, V_{OUT} = 5V, I_{OUT} = 3.5A$	--	89.1	--	%

## Power-up Procedure

### Suggestion Required Equipments

- RTQ6363GQW Evaluation Board
- DC power supply capable of at least 60V and 4A
- Electronic load capable of 6A
- Function Generator
- Oscilloscope

### Quick Start Procedures

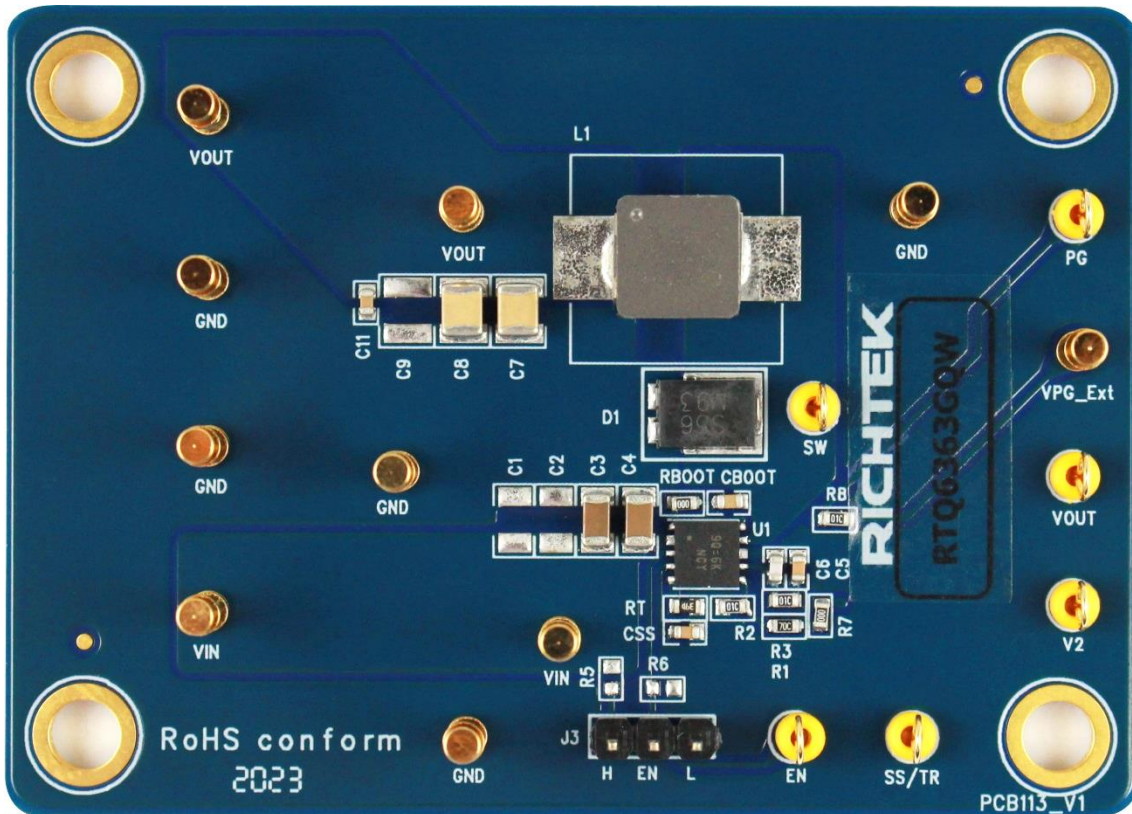
The Evaluation Board is fully assembled and tested. Follow the steps below to verify board operation. Do not turn on supplies until all connections are made. When measuring the output voltage ripple, care must be taken to avoid a long ground lead on the oscilloscope probe. Measure the output voltage ripple by touching the probe tip and ground ring directly across the last output capacitor.

### Proper measurement equipment setup and follow the procedure below.

- 1) With power off, connect the input power supply to VIN and GND pins.
- 2) With power off, connect the electronic load between the VOUT and nearest GND pins.
- 3) Turn on the power supply at the input. Make sure that the input voltage does not exceeds 60V on the Evaluation Board.
- 4) Check for the proper output voltage using a voltmeter.
- 5) Once the proper output voltage is established, adjust the load within the operating ranges and observe the output voltage regulation, ripple voltage, efficiency and other performance.

## Detailed Description of Hardware

### Headers Description and Placement



Carefully inspect all the components used in the EVB according to the following Bill of Materials table, and then make sure all the components are undamaged and correctly installed. If there is any missing or damaged component, which may occur during transportation, please contact our distributors or e-mail us at [evb\\_service@richtek.com](mailto:evb_service@richtek.com).

### Test Points

The EVB is provided with the test points and pin names listed in the table below.

Test Point/ Pin Name	Function
<b>VIN</b>	Input voltage.
<b>VOUT</b>	Output voltage.
<b>GND</b>	Ground.
<b>EN</b>	Enable test point.
<b>J3</b>	EN jumper. Connect EN to ground to disable, open to enable.
<b>SW</b>	Switch node test point.

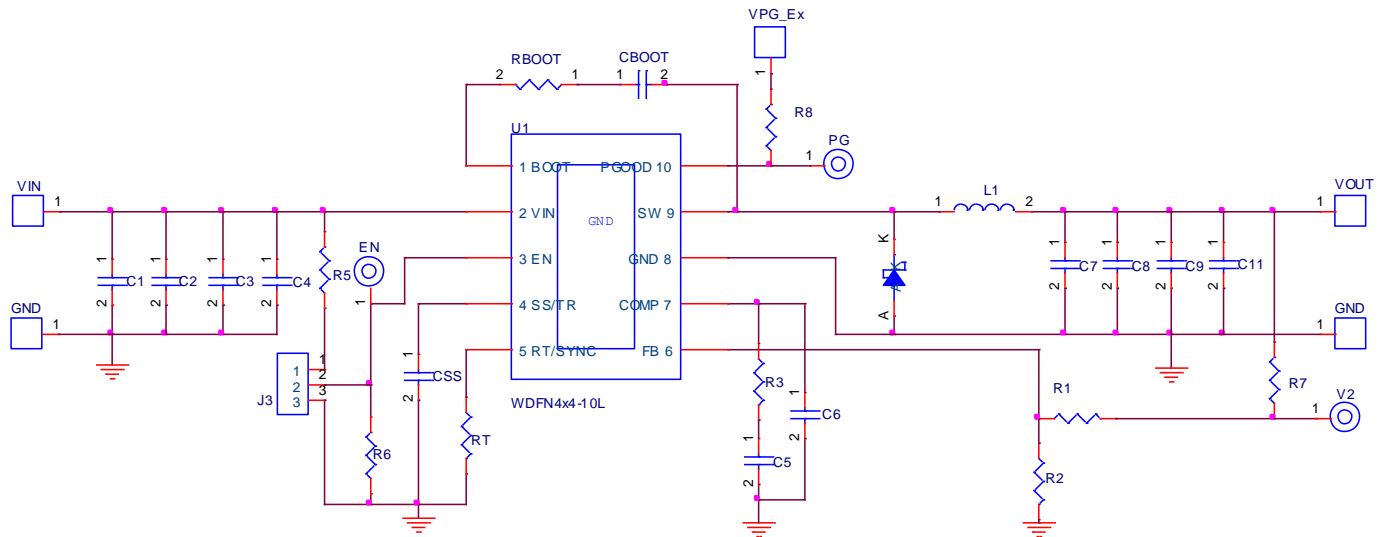
Test Point/ Pin Name	Function
<b>V2</b>	Test pin V2 is used for bode plot measurement. Connect VOUT pin and this pin to the injection transformer.
<b>SS/TR</b>	Soft-start and tracking test point.
<b>VPG_Ext</b>	Test point for pull up voltage of the Open-drain power-good indication output.
<b>PGOOD</b>	Power-good indication test point.

**Bill of Materials**

VIN = 12V, VOUT = 5.0V, IOUT = 3.5A, fsw = 400kHz						
Reference	Count	Part Number	Value	Description	Package	Manufacturer
U1	1	RTQ6363GQW	RTQ6363GQW	Step-Down Converter	WDFN-10L 4x4	RICHTEK
C3, C4	2	GRM31CR72A225KA73L	2.2μF	Capacitor, Ceramic, 100V, X7R	1206	MURATA
C5	1	0603B822K500CT	8.2nF	Capacitor, Ceramic, 50V, X7R	0603	WALSIN
C6	1	0603N101J500CT	100pF	Capacitor, Ceramic, 50V, NPO	0603	WALSIN
C7, C8	2	GRM32ER61C476KE15L	47μF	Capacitor, Ceramic, 16V, X5R	1210	MURATA
C11	1	0603B104K500CT	0.1μF	Capacitor, Ceramic, 50V, X7R	0603	WALSIN
CBOOT	1	0603B104K500CT	0.1μF	Capacitor, Ceramic, 50V, X7R	0603	WALSIN
CSS	1	C1608X7R1H103KT000N	10nF	Capacitor, Ceramic, 50V, X7R	0603	TDK
D1	1	SS5P6	Schottky Diode, 60V/5A	Schottky Diode, 60V/5A	TO-277A	VISHAY
L1	1	VCHA075D-100MS6	10μH	Inductor, Isat = 8A, 34.5mΩ		Cyntec
R1	1	WR06X5232FTL	52.3k	Resistor, Chip, 1/10W, 1%	0603	WALSIN
R2, R3, R8	3	WR06X1002FTL	10k	Resistor, Chip, 1/10W, 1%	0603	WALSIN
R7, RBOOT	2	WR06X000 PTL	0	Resistor, Chip, 1/10W, 1%	0603	WALSIN
RT	1	WR06X2493FTL	249k	Resistor, Chip, 1/10W, 1%	0603	WALSIN

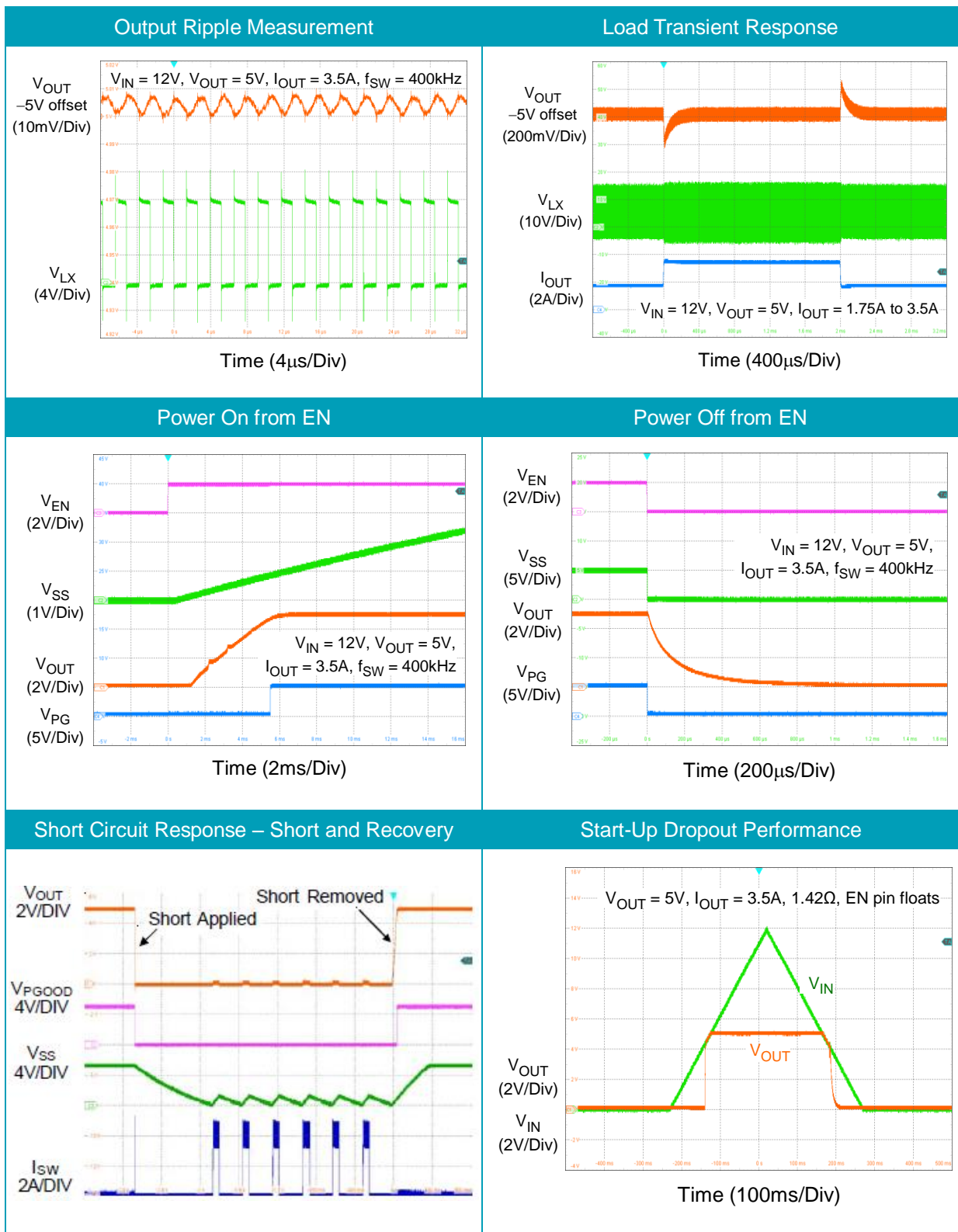
**Typical Applications**

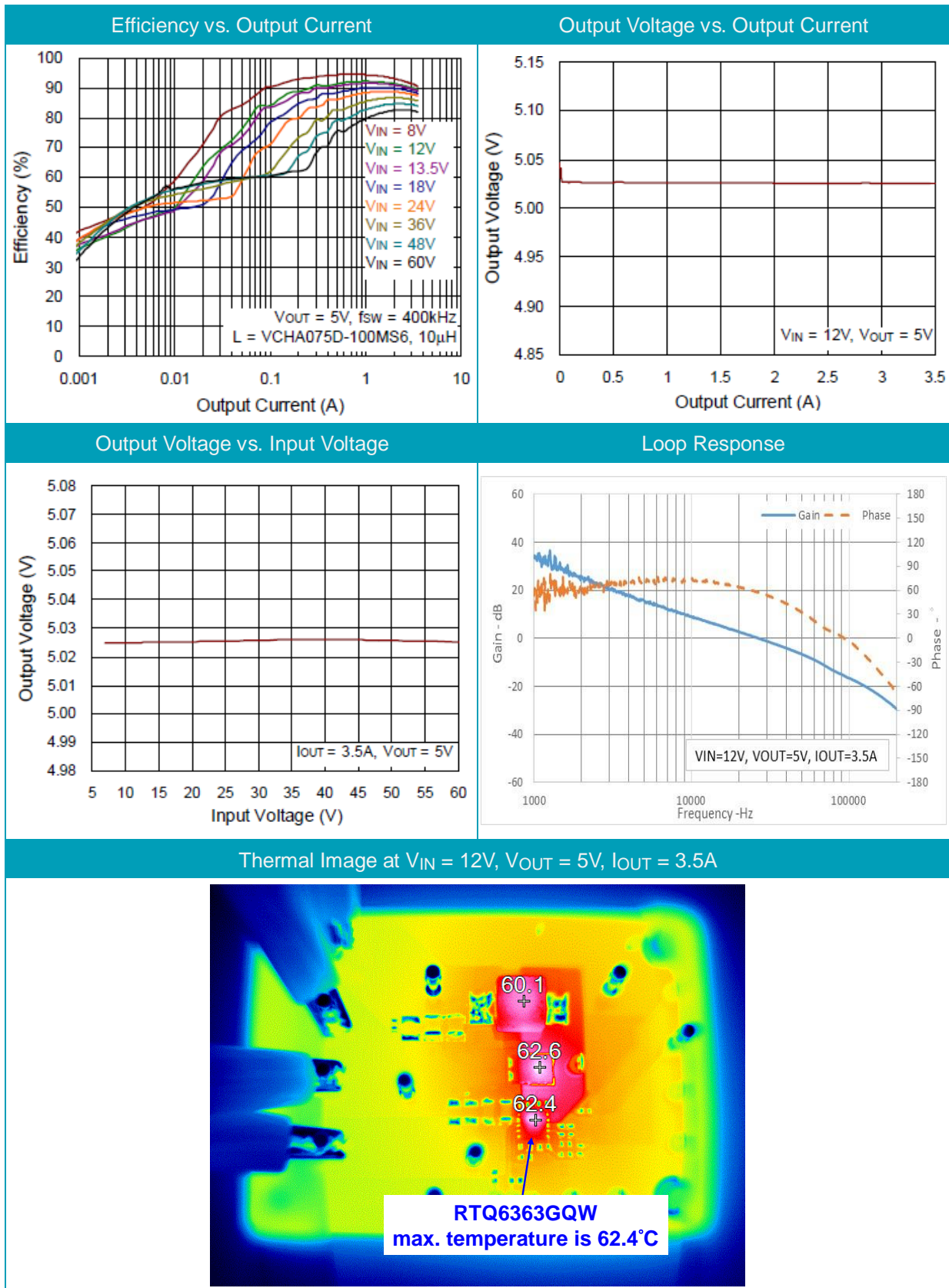
**EVB Schematic Diagram**



1. The capacitance values of the input and output capacitors will influence the input and output voltage ripple.
2. MLCC capacitors have degrading capacitance at DC bias voltage, and especially smaller size MLCC capacitors will have much lower capacitance.

Measure Result





Note : When measuring the input or output voltage ripple, care must be taken to avoid a long ground lead on the oscilloscope probe. Measure the output voltage ripple by touching the probe tip directly across the output capacitor.



**Evaluation Board Layout**

Figure 1 to Figure 4 are RTQ6363GQW Evaluation Board layout. This board size is 70mm x 50mm and is constructed on four-layer PCB, outer layers with 2 oz. Cu and inner layers with 1 oz. Cu.

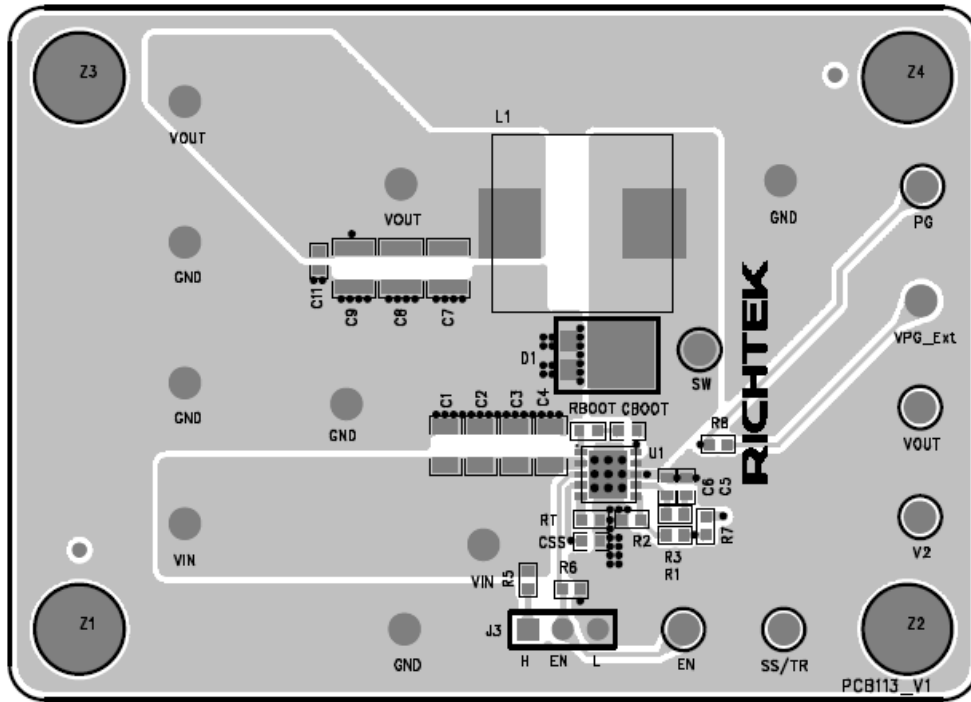


Figure 1. Top View (1<sup>st</sup> layer)

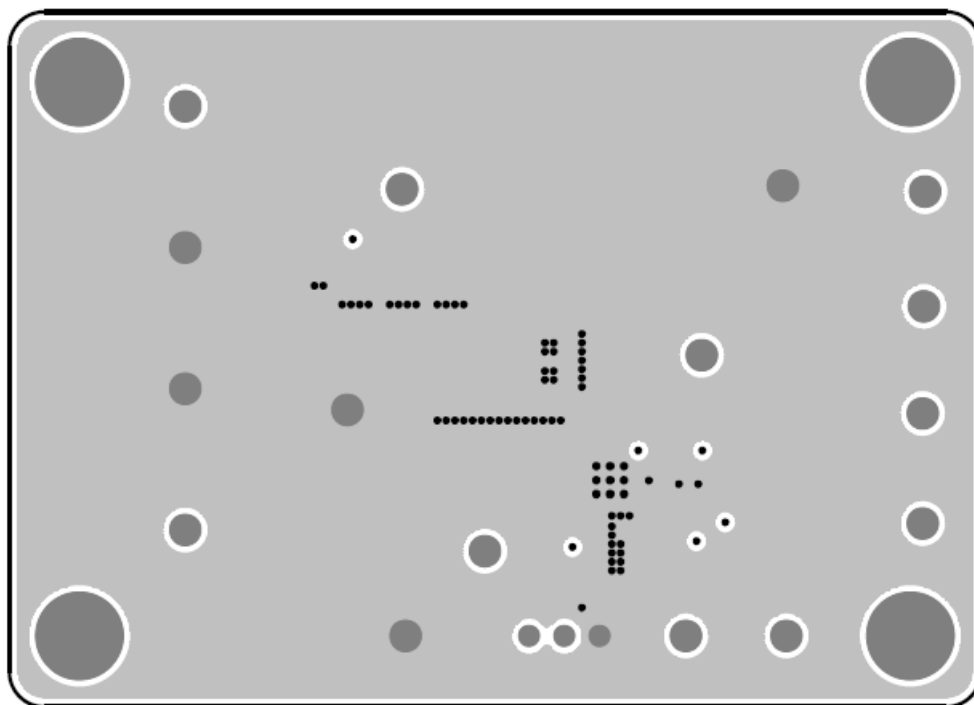


Figure 2. PCB Layout—Inner Side (2<sup>nd</sup> Layer)

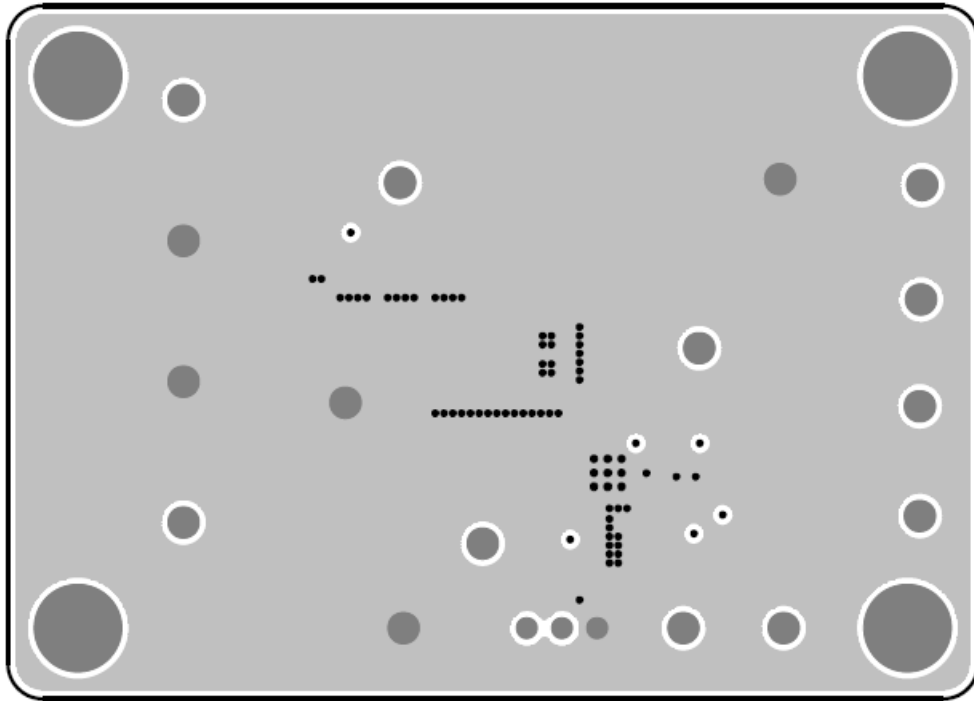


Figure 3. PCB Layout—Inner Side (3<sup>rd</sup> Layer)

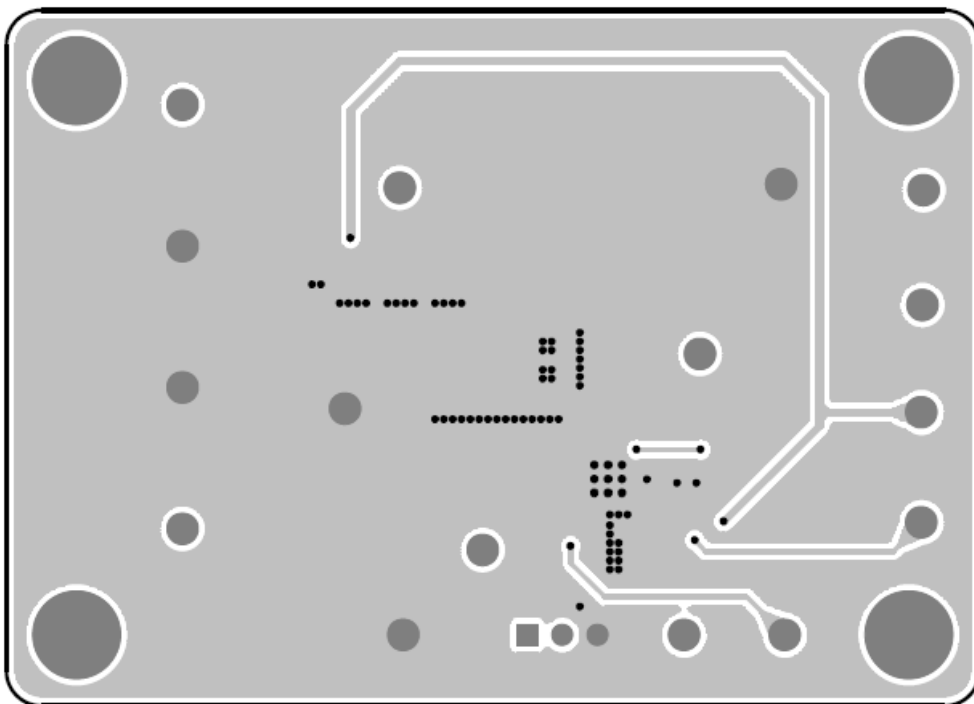


Figure 4. Bottom View (4<sup>th</sup> Layer)

### ***More Information***

For more information, please find the related datasheet or application notes from Richtek website <http://www.richtek.com>.

### ***Important Notice for Richtek Evaluation Board***

THIS DOCUMENT IS FOR REFERENCE ONLY, NOTHING CONTAINED IN THIS DOCUMENT SHALL BE CONSTRUED AS RICHTEK'S WARRANTY, EXPRESS OR IMPLIED, UNDER CONTRACT, TORT OR STATUTORY, WITH RESPECT TO THE PRESENTATION HEREIN. IN NO EVENT SHALL RICHTEK BE LIABLE TO BUYER OR USER FOR ANY AND ALL DAMAGES INCLUDING WITHOUT LIMITATION TO DIRECT, INDIRECT, SPECIAL, PUNITIVE OR CONSEQUENTIAL DAMAGES.