

# MICRO SWITCH

A DIVISION OF MINNEAPOLIS-HONEYWELL REGULATOR COMPANY  
 FREEPORT, MINNESOTA

FED. MFR. CODE 91929

## SWITCH - BASIC

CATALOG LISTING

YA-2CB713-A2

(M)YA-2CB713-A2  
 ISSUE 1

CATALOG LISTING  
**YA-2CB713-A2**  
 PAGE 1 OF 1

**M**

DRAWING NUMBER

6

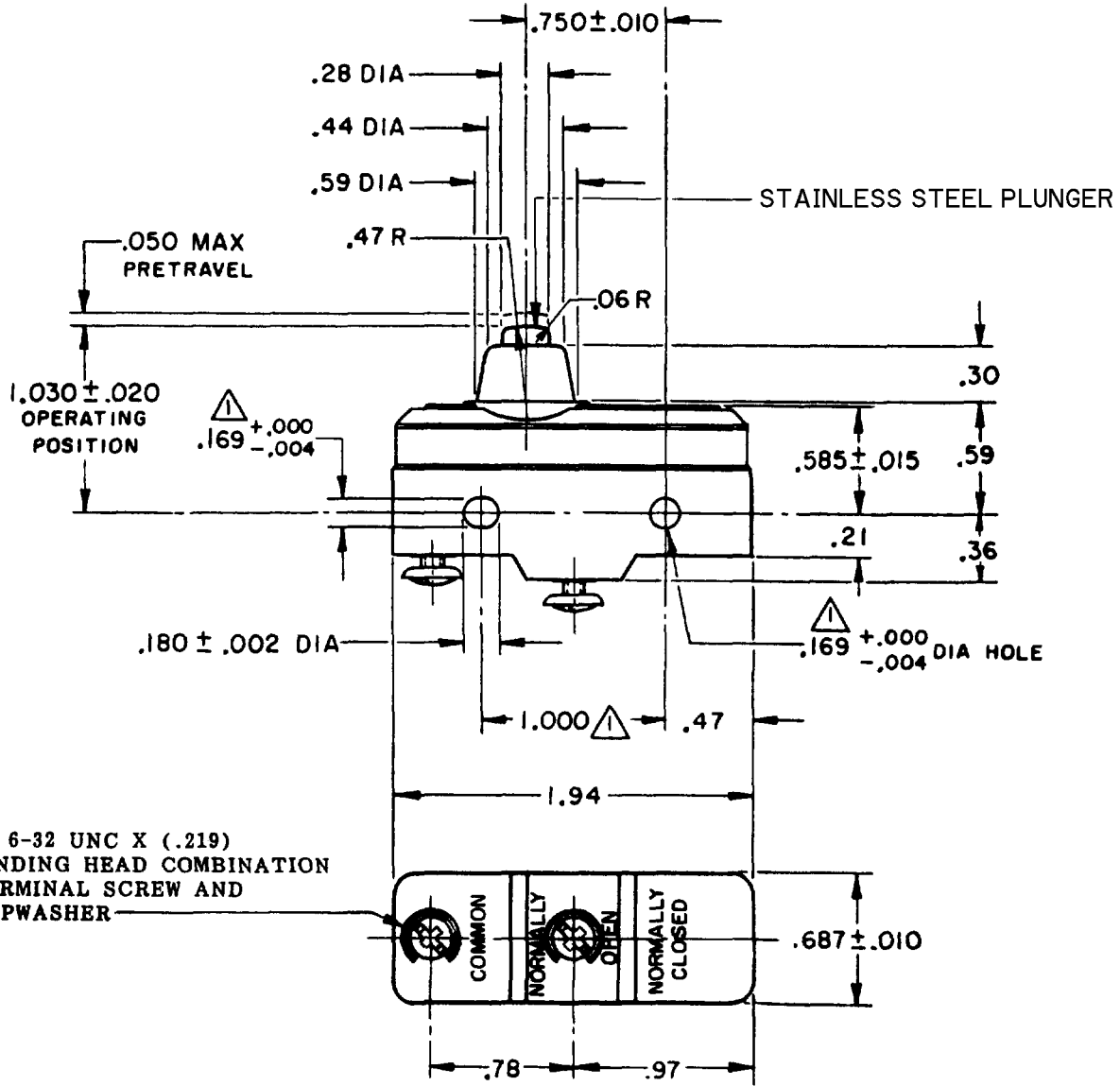
ISSUE

REVISIONS

A	CO 9800	PER	MAY 60
B	COE0707	WE G	18 OCT 65
C	CO35220	PER	MAY 75
D	CO-73287-J	JAL	27 NOV 93
E	200462	CSL	23 MAY 00

FORMTEK  
 3-5937B

RELEASE NO. CHECK MAY 60 CHECK MAY 60 CHECK MAY 60



2X 6-32 UNC X (.219)  
 BINDING HEAD COMBINATION  
 TERMINAL SCREW AND  
 CUPWASHER

NOTE -  
 ▲ MOUNTING HOLES WILL ACCEPT PINS OR SCREWS  
 OF .165 MAX DIA ON 1.000 ± .002 CENTERS

THIS DRAWING COVERS A PROPRIETARY ITEM AND IS THE PROPERTY OF MICRO SWITCH, A DIVISION OF MINNEAPOLIS-HONEYWELL REGULATOR CO. THIS DRAWING IS NOT TO BE COPIED OR USED WITHOUT THE APPROVAL OF MICRO SWITCH.

CHARACTERISTICS	ELECTRICAL DATA	SCALE FULL
OPERATING FORCE - - - - - 14 - 22 OZ	CONTACT ARRANGEMENT S P N O	DO NOT SCALE PRINT
RELEASE FORCE - - - - - 10 OZ MIN	UNDERWRITERS' LAB. INC. LISTED RATING -L15- 15 A - 125, 250, OR 480 VAC, 10 A - 125 VAC "L" 3/4 HP - 125 VAC; 1 1/2 HP - 250 VAC 1/2 A - 125 VDC, 1/4 A - 250 VDC	UNLESS OTHERWISE SPECIFIED DIMENSIONS ARE IN INCHES
DIFFERENTIAL TRAVEL - - - - .002-.0075		TOLERANCES ARE: ONE PLACE (.0) ±.030 TWO PLACE (.00) ±.015 THREE PLACE (.000) ±.008 ANGLES ±
OVERTRAVEL - - - - - .094 MIN		WEIGHT .064 LB