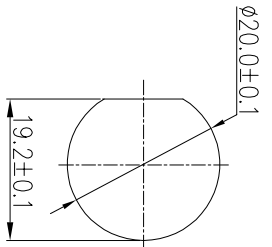
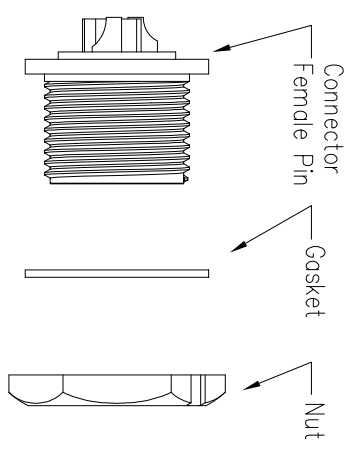
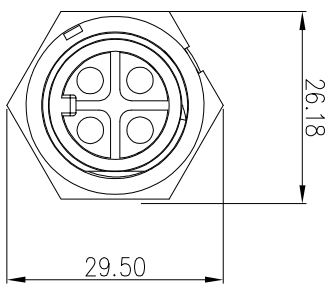
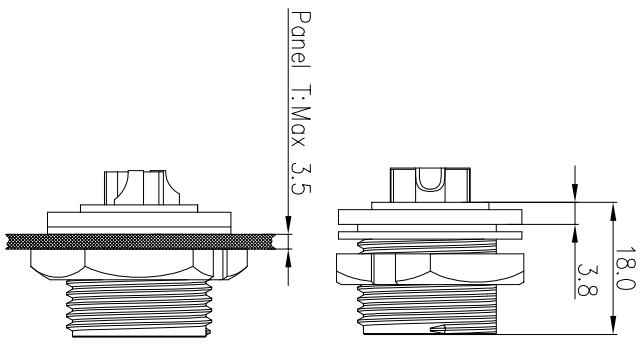


REV.	EN. NO.	DESCRIPTION	SIGN	DATE
C1	N/A	INITIAL DRAWING	Liu	2019/08/13

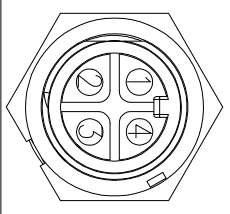


Recommended Panel Cut-Out



23XXX615-01

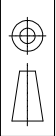
Pin Number



4 Pin

P/N: 23004615-01

Pin Assignments  
Front View



UNIT: mm

TOLERANCE	$\pm 0.25$
X	$\pm 0.15$
.XX	$\pm 0.05$
.XXX	$\pm 0.05$
ANGLES	$\pm 1'$

DESCRIPTION  
Middle Series Screw Front  
Mount With Male Pin

SCALE	1:1	SHEET	1 OF 1
REV	C1	SIZE	A4
* : Inspection Item			

**CHOGORI**

PART NO  
23XXX615-01

DRAWN BY  
Liu

DATE  
2019/08/13

DWG NO

CHECKED BY

DATE  
2019/08/13

CUSTOMER

APPROVED BY

DATE  
2019/08/13

- Specification:
1. Operation Temperature:  $-45^{\circ}\text{C} \sim 105^{\circ}\text{C}$ .
  2. Insulation Resistance:  $100\text{M}\Omega$  at DC500V.
  3. Contact Resistance:  $<10\text{m}\Omega$ .
  4. Withstand Voltage: 2000V AC
  5. Operating Current: 15A
  6. Operating Voltage: AC 300V
  7. Waterproof Rate: IP67 (Mated)
  8. Housing: Nylon, Black
  9. Male Pin: Copper Alloy, Gold Plated
  10. Gasket: Silicon Gray
  11. Panel Nut: Nylon, Black
  12. Torque Rate:  $0.8 \sim 1.0\text{N}\cdot\text{m}$
  13. RoHS Compliant.
  14. Mating Cap P/N: 806-00021-00