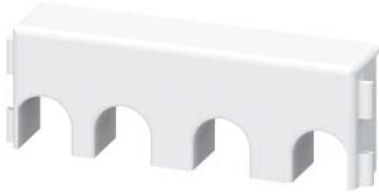


touch protection cover for 3RU21 on the outgoing side Size S00 Main circuit: ring cable lug



General technical data		
product brand name		SIRIUS
product designation		terminal cover
design of the product		shock protection for ring cable lug connection
ambient temperature		
• during storage	°C	-55 ... +80
• during operation	°C	-20 ... +60
Installation/ mounting/ dimensions		
fastening method		clip-on
width	mm	45
height	mm	18
depth	mm	9
Further information		

Information- and Downloadcenter (Catalogs, Brochures,...)

<https://www.siemens.com/ic10>

Industry Mall (Online ordering system)

<https://mall.industry.siemens.com/mall/en/en/Catalog/product?mfb=3RU2916-3BJ20>

Cax online generator

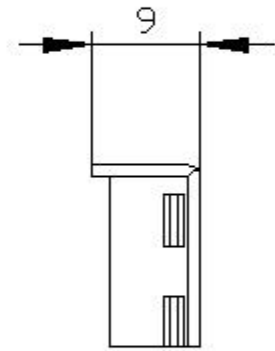
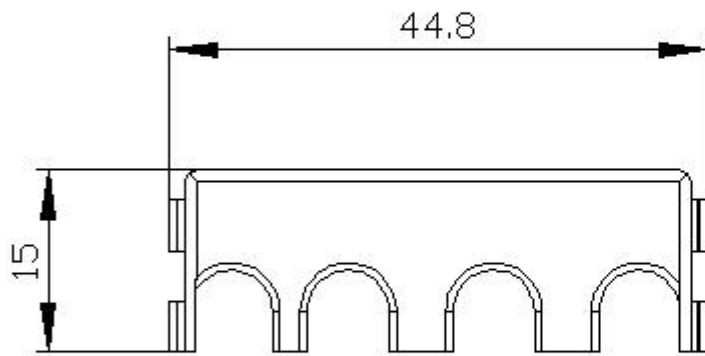
<http://support.automation.siemens.com/WW/CAXorder/default.aspx?lang=en&mfb=3RU2916-3BJ20>

Service&Support (Manuals, Certificates, Characteristics, FAQs,...)

<https://support.industry.siemens.com/cs/ww/en/ps/3RU2916-3BJ20>

Image database (product images, 2D dimension drawings, 3D models, device circuit diagrams, EPLAN macros, ...)

http://www.automation.siemens.com/bilddb/cax_de.aspx?mfb=3RU2916-3BJ20&lang=en



last modified:

5/15/2020 