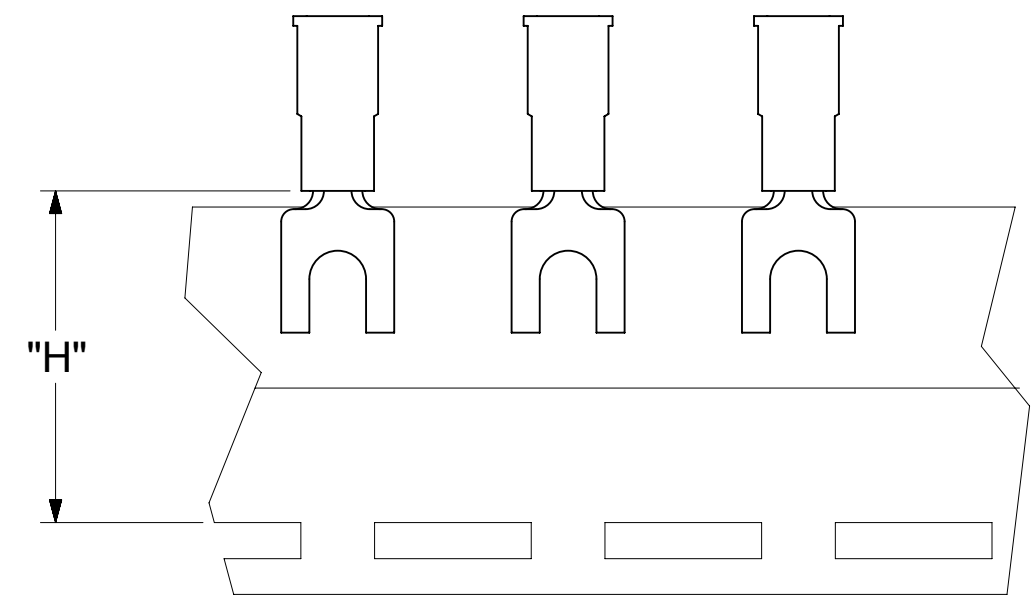
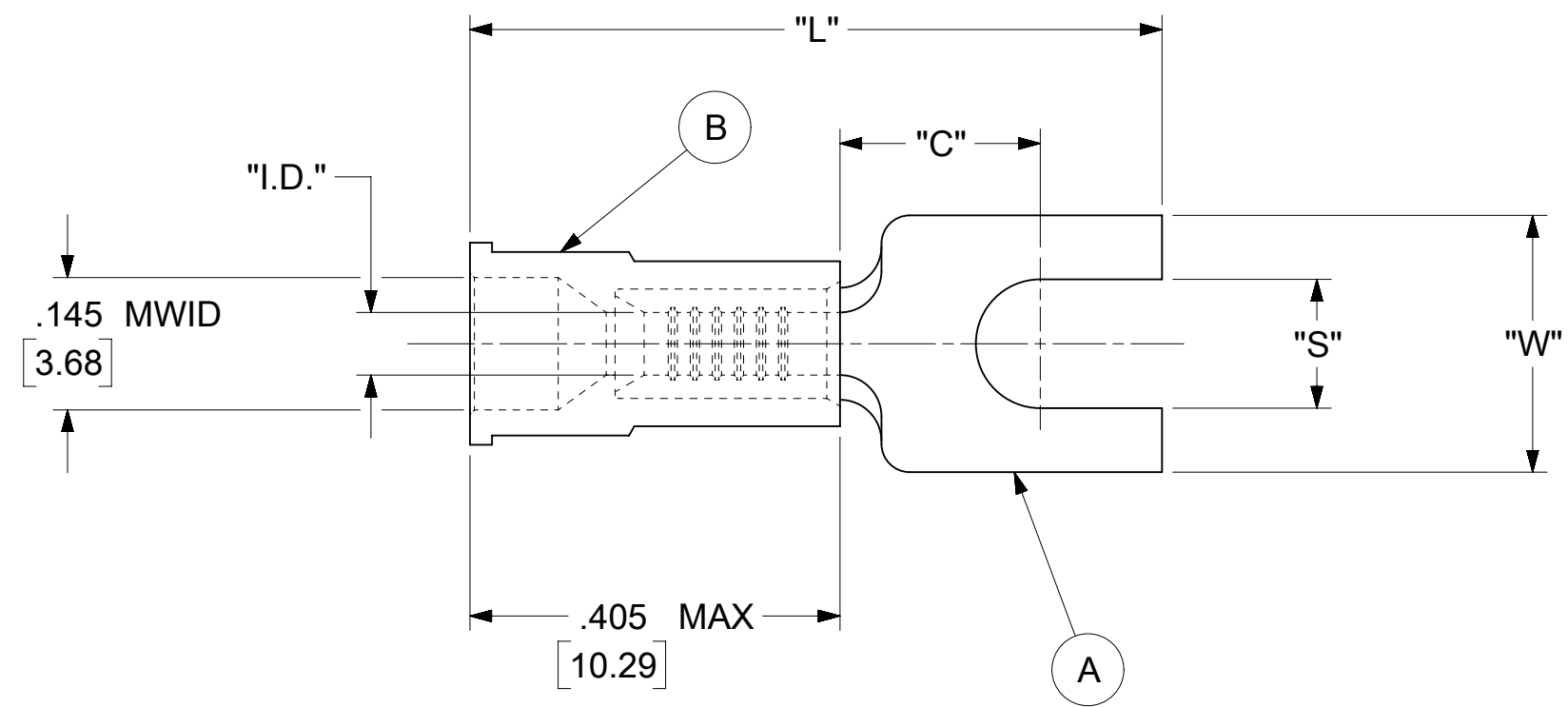


LOOSE PIECE		TAPE MOUNTED		SPECIFICATIONS							
MATERIAL NUMBER	ENGINEERING NUMBER	MATERIAL NUMBER	ENGINEERING NUMBER	STUD SIZE	"S" ±.005 [0.13]	"W" ±.010 [0.25]	"C" MIN.	"L" MAX.	"I.D." MIN.	"H"	STOCK THICKNESS
191310038	AA-234-06X	191310037	AA-234-06XT	6	.146 [3.71]	.291 [7.39]	.207 [5.26]	.785 [19.94]	.062 [1.57]	.980 [24.89]	.028 $\frac{+.001}{-.000}$ [0.71]
191310036	AA-234-08X	191310035	AA-234-08XT	8	.173 [4.39]						
191310034	AA-234-10X	---	---	10	.198 [5.03]						
191310031	AA-238-06X	191310030	AA-238-06XT	6	.146 [3.71]	.245 [6.22]	.207 [5.26]	.785 [19.94]	.062 [1.57]	.980 [24.89]	.028 $\frac{+.001}{-.000}$ [0.71]



NOTES:

- MATERIAL:
 - (A). SPADE TONGUE TERMINAL: COPPER
PLATING: ELECTRO-TIN (.0003 MIN.)
 - (B). INSULATION: MOLDED PVC (RED)
- MWID: MAXIMUM WIRE INSULATION DIAMETER
- WIRE SIZE: 22 -18 AWG
0.25 -1.5 MM²
- "UL" LISTING #E32244
"CSA" LISTING #18689
- ALL DIMENSIONS IN INCHES/[MM].
- PARTS ARE ROHS COMPLIANT.
- DIMS. SHOWN ARE FOR REFERENCE ONLY.

SYMBOLS	THIS DRAWING CONTAINS INFORMATION THAT IS PROPRIETARY TO MOLEX ELECTRONIC TECHNOLOGIES, LLC AND SHOULD NOT BE USED WITHOUT WRITTEN PERMISSION										
	DIMENSION UNITS		SCALE		CURRENT REV DESC: MIGRATION TO ECTR/NX						
	INCH/MM		NTS		EC NO: 620815		DRWN: ABENJAMINLW 2019/07/01				
	GENERAL TOLERANCES (UNLESS SPECIFIED)				CHK'D: GROJAS01 2019/07/18		APPR: JMACNEIL 2019/08/05				
▽ = 0	4 PLACES	±	---	±	---	INITIAL REVISION:		DRWN: JJ 1984/11/02			
▽ = 0	3 PLACES	±	---	±	.005	APPR: JMACNEIL		SERIES 19131 2019/08/05			
▽ = 0	2 PLACES	±	0.13	±	.01	DRAFT WHERE APPLICABLE MUST REMAIN WITHIN DIMENSIONS		THIRD ANGLE PROJECTION			
▽ = 0	1 PLACE	±	0.25	±	---	DRAWING C-SIZE		SHEET NUMBER 1 OF 1			
☒ = 0	0 PLACES	±	---	±	---	MATERIAL NUMBER		CUSTOMER			
■ = 0	ANGULAR TOL	±	0.5°			191310039		GENERAL MARKET			
▽ = 0					DOCUMENT NUMBER		DOC TYPE		DOC PART		
						PSD		000		A	

NOTES:

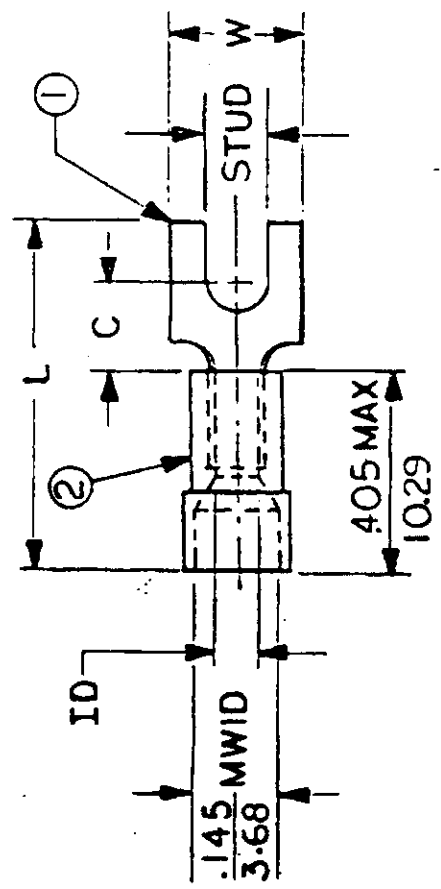
① MAT'L: COPPER

PLATING: ELECTRO-TIN (.0003 MIN.)

② INSULATION: MOLDED PVC (RED)

STUD SIZES: (.005)

- 02 = .094
- 04 = .119
- 06 = .146
- 08 = .173
- 10 = .198
- 14 = .265
- 56 = .328
- 38 = .390



"UL" LISTING #E32244
 "CSA" LISTING #18689

MWID = MAXIMUM WIRE INSULATION DIAMETER
 WIRE SIZE: 22 - 18 AWG
 .25 - 1.5 MM²

ALL DIMENSIONS = $\frac{\text{INCHES}}{\text{MM}}$

PART NUMBER	"W" ±.010	"C" MIN.	"L" MAX.	"ID" MIN.	AVAILABLE STUD SIZES	STOCK THICKNESS	DIMENSIONAL TOLERANCES UNLESS OTHERWISE SPECIFIED	
							REFERENCE	SCALE: NTS
AA-234 -	$\frac{.291}{7.39}$	$\frac{.207}{5.26}$	$\frac{.785}{19.94}$	$\frac{.062}{1.57}$	04X, 06X, 08X	$\frac{.028^{+.886}}{.71}$	DRWN. BY: JJ	
AA-238 -	$\frac{.245}{6.23}$	$\frac{.207}{5.26}$	$\frac{.785}{19.94}$	$\frac{.062}{1.57}$	04X, 06X	$\frac{.028^{+.886}}{.71}$	CHKD. BY: GZ	
AA-291 -	$\frac{.420}{10.66}$	$\frac{.235}{5.97}$	$\frac{.865}{21.97}$	$\frac{.054}{1.37}$	06X, 08X, 10X	$\frac{.031^{+.001}}{.79}$	APPRD. BY:	
AA-294 -	$\frac{.375}{9.53}$	$\frac{.235}{5.97}$	$\frac{.868}{22.05}$	$\frac{.054}{1.37}$	06X, 08X, 10X	$\frac{.031^{+.001}}{.79}$		
AA-297 -	$\frac{.325}{8.26}$	$\frac{.235}{5.97}$	$\frac{.865}{21.97}$	$\frac{.054}{1.37}$	04X, 06X, 08X	$\frac{.031^{+.001}}{.79}$		

TITLE: SPADE TONGUE TERMINAL INSULKRIMP 200 SERIES

DATE: 11-2-84

DRWN. BY: JJ

CHKD. BY: GZ

APPRD. BY:

