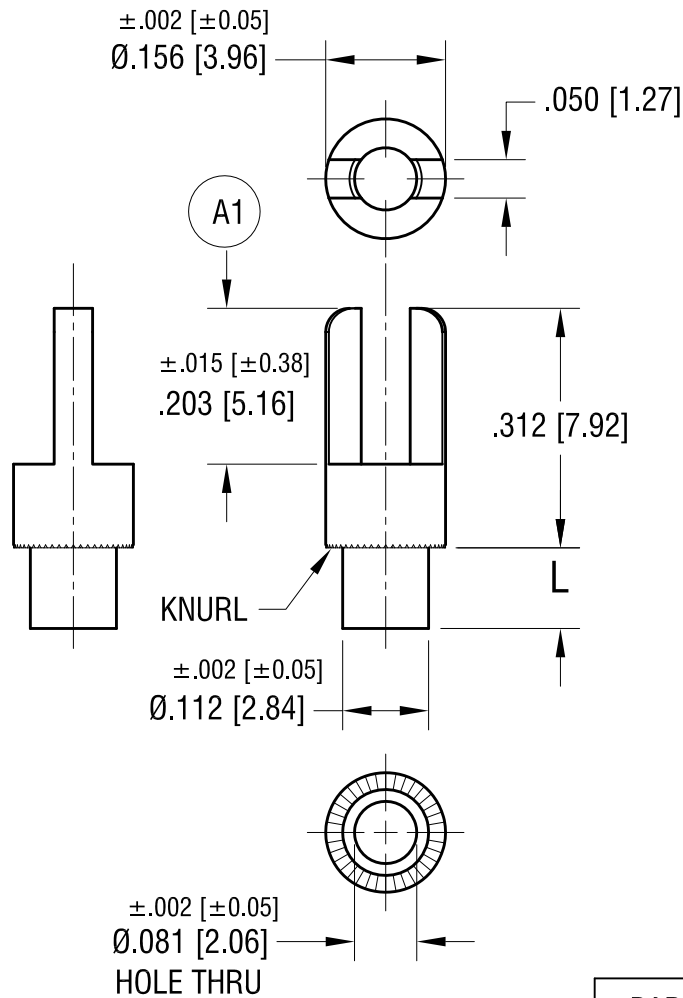


THIS DOCUMENT IS THE PROPERTY OF  
KEYSTONE ELECTRONICS CORP. AND  
SHALL NOT BE REPRODUCED, DISTRIBUTED  
OR USED AS A BASIS FOR MANUFACTURE  
WITHOUT PRIOR WRITTEN PERMISSION  
FROM KEYSTONE ELECTRONICS CORP.

ACTUAL SIZE



PART NO.	'L' DIM.
1510-1	.075 [1.91]
1510-2	.105 [2.67]
1510-3	.135 [3.43]
1510-4	.165 [4.19]

**KEYSTONE ELECTRONICS CORP.**

www.keyelco.com • NEW HYDE PARK, NY 11040 • Tel (516) 328-7500

PART NAME		TERMINAL	
MATERIAL		BRASS	
FINISH	TIN PLATE	DRN BY	BOONE
		APP'D	RH
		DATE	6.10.02
		SCALE	4X
TOLERANCES	INCH [MM]	CODE	DWG NO.
DECIMAL	$\pm .005$ [ $\pm 0.13$ ]	C	1510-
ANGULAR	$\pm 1^\circ$		
UNLESS OTHERWISE SPECIFIED			

(A1) WAS  $.203 \pm .005$

7.14.21	CHANGE AS PER ECN 21-068	A
DATE	DESCRIPTION	REV.