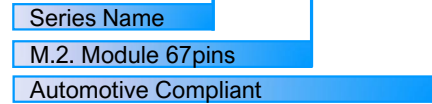


SPECIFICATIONS:

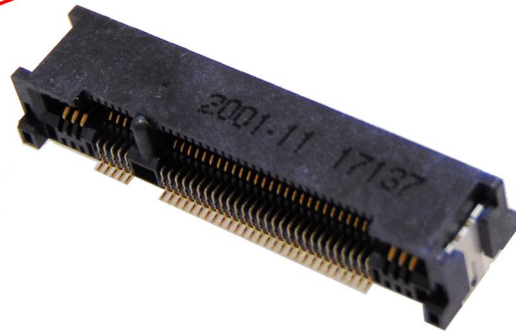
Insulation Resistance: 250MΩ min. at 500V DC
 Withstanding Voltage: 500Vrms for 1min
 Voltage Rating: 50V DC
 Current Rating:
 ➤ Signal Pins – 0.5A MAX
 ➤ Power Pins – 2.5A MAX
 Contact Resistance: 100mΩ max. at 20mV max.
 Operating Temp.: - 40°C ~ +85°C
 Mating Cycle: 25 times

PART NUMBER:

CNU027S-067-2001-VE



AUTOMOTIVE COMPLIANT



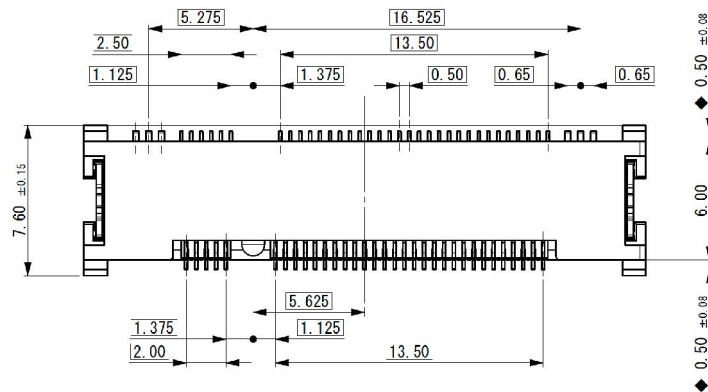
MATERIALS AND FINISH:

- Contacts: Pb
- Insulator: LCP
- SMT Tabs: Brass

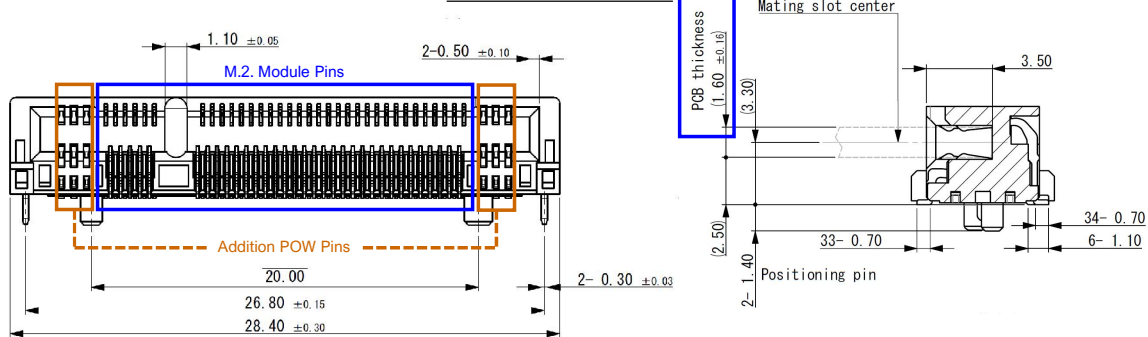
FEATURES:

- Supports high-speed signals such as USB3.1 Gen2.0 and PCIe Gen4.0 targets
- **Support module thickness = 1.60mm**
- **Support module pin count = 67 (M.2) + 6 (pow)**
- Side-Power pins offer strong retention force for card edge module and optional current transmission support
- Connector Pitch:
 ➤ Signal Pins – 0.5mm
 ➤ Power Pins – 0.65mm

OUTLINE DIMENSIONS (mm):



Front & Side View

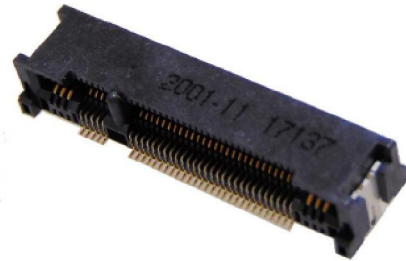


Front & Side View

Automotive M.2. Connector CNU027S Series

Product Overview

- Designed for Automotive application
- Supports high-speed signals such as USB 3.1 Gen2.0 and PCIe Gen4.0 targets
- Side-Power pin current capacity rating @ 2.5A/per pin MAX
- Support module thickness = 1.60mm
- Support module pin count = 67 (M.2) + 6 pins (pow)



Automotive M.2. Connector
CNU027S-067-2001-VE

Automotive M.2. Connector SI Data Overview

