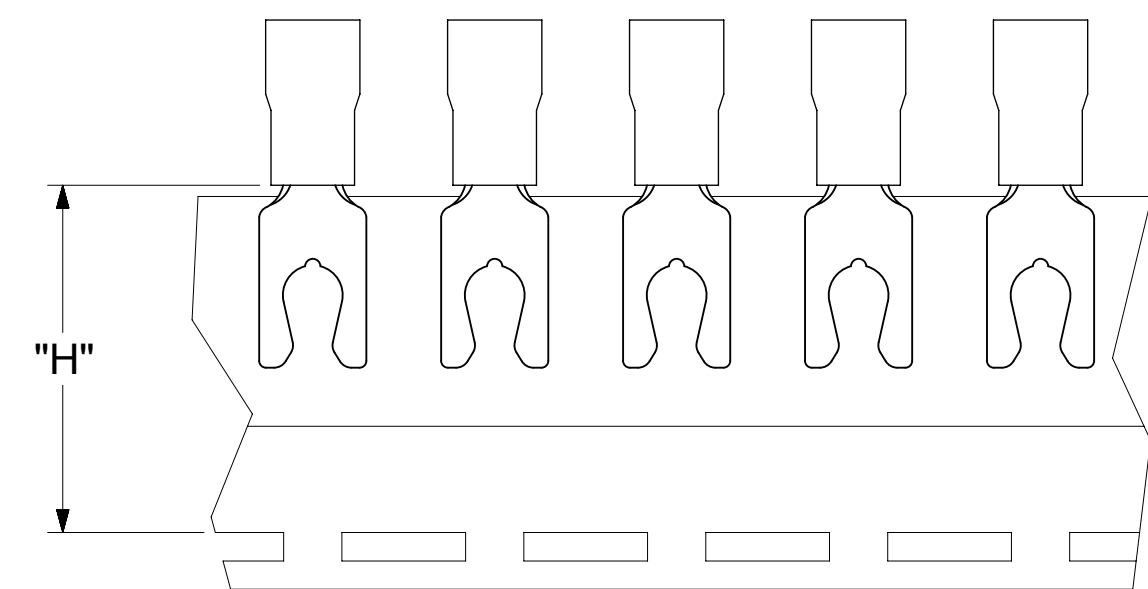
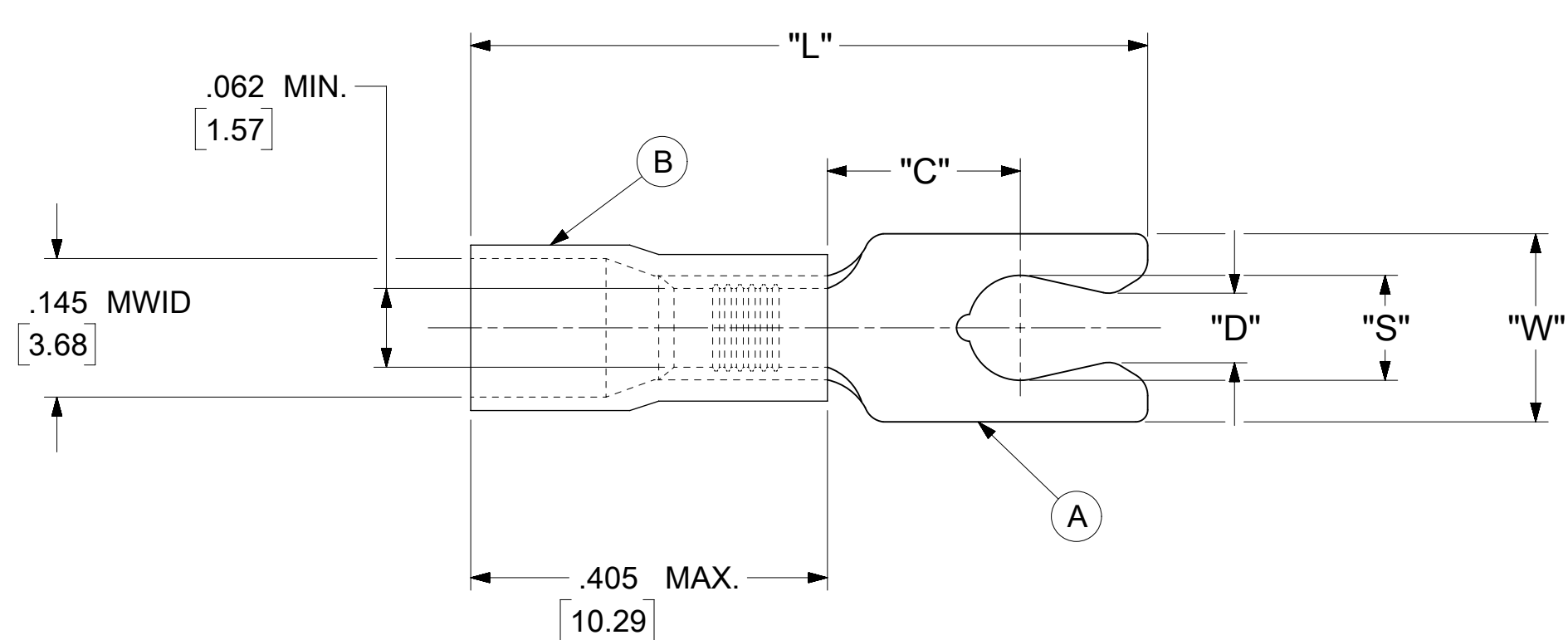


LOOSE PIECE		TAPE MOUNTED		SPECIFICATIONS						
MATERIAL NUMBER	ENGINEERING NUMBER	MATERIAL NUMBER	ENGINEERING NUMBER	STUD SIZE	"S" ±.005 [0.13]	"W" ±.010 [0.25]	"C" MIN.	"L" MAX.	"D" ±.005 [0.13]	"H"
190990013	AA-2714-08X	190990014	AA-2714-08XT	8	.173 [4.39]	.310 [7.87]	.261 [6.63]	.871 [22.12]	.139 [3.53]	.980 [24.89]
190990015	AA-2715-10X	190990016	AA-2715-10XT	10	.198 [5.03]	.330 [8.38]	.261 [6.63]	.919 [23.34]	.156 [3.96]	.980 [24.89]



PARTS ON TAPE

NOTES:

1. MATERIAL:

(A). TERMINAL: COPPER (STOCK THICKNESS $.028 \begin{smallmatrix} +.001 \\ -.000 \end{smallmatrix}$ [0.71])

PLATING: ELECTRO-TIN (.0003 MIN.)

(B). INSULATION: MOLDED PVC (RED)

2. MWID: MAXIMUM WIRE INSULATION DIAMETER

3. WIRE SIZE: 22 -18 AWG

0.25 -1.5 MM²

4. "UL" LISTING #E32244

"CSA" LISTING #18689

5. ALL DIMENSIONS IN INCHES/[MM].

6. PARTS ARE ROHS COMPLIANT.

7. DIMS. SHOWN ARE FOR REFERENCE ONLY.

SYMBOLS	THIS DRAWING CONTAINS INFORMATION THAT IS PROPRIETARY TO MOLEX ELECTRONIC TECHNOLOGIES, LLC AND SHOULD NOT BE USED WITHOUT WRITTEN PERMISSION												
	DIMENSION UNITS	SCALE		CURRENT REV DESC: MIGRATION TO ECTR/NX									
∇ = 0	INCH/MM	NTS		EC NO: 620958 DRWN: ABENJAMINLW 2019/07/16 CHK'D: GROJAS01 2019/07/19 APPR: JMACNEIL 2019/08/05								SNAP SPADE TONGUE TERMINAL INSULKRIMP SERIES	
∇ = 0	GENERAL TOLERANCES (UNLESS SPECIFIED)									INITIAL REVISION: DRWN: GZ 1985/04/05 APPR: JMACNEIL 2019/08/05			
∇ = 0		MM	INCH	DOCUMENT NUMBER: 190990013 DOC TYPE: PSD DOC PART: 000 REVISION: A									
∇ = 0	4 PLACES	±	---							±	---	MATERIAL NUMBER: SEE TABLE CUSTOMER: GENERAL MARKET SHEET NUMBER: 1 OF 1	
∇ = 0	3 PLACES	±	---	±	.005	DRAFT WHERE APPLICABLE MUST REMAIN WITHIN DIMENSIONS							
∇ = 0	2 PLACES	±	0.13	±	.01							THIRD ANGLE PROJECTION DRAWING: C-SIZE SERIES: 19099	
∇ = 0	1 PLACE	±	0.25	±	---	DRAFT WHERE APPLICABLE MUST REMAIN WITHIN DIMENSIONS							
∇ = 0	0 PLACES	±	---	±	---							THIRD ANGLE PROJECTION DRAWING: C-SIZE SERIES: 19099	
∇ = 0					ANGULAR TOL	±	0.5 °	THIRD ANGLE PROJECTION DRAWING: C-SIZE SERIES: 19099					
∇ = 0													

NOTES:

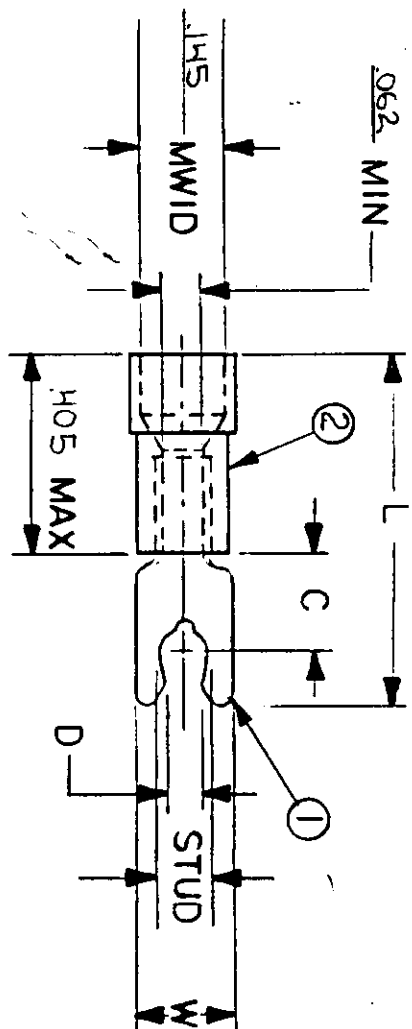
+ .001
- .000

- ① MAT'L : COPPER, STOCK TKN .028
PLATING : ELECTRO-TIN (.0003 MIN)
- ② INSULATION: MOLDED PVC (RED)
- ③ "UL" LISTING # E32244
"CSA" LISTING 18689

MWID = MAX. WIRE INSULATION DIA.

FILE NO.

AA-CD-205-03



WIRE SIZE: 22-18 AWG.
25-1.5 MM²

PART NUMBER	"W" ±.010	"C" MIN.	"L" MAX.	"D" ±005	AVAILABLE STUD SIZES	TITLE	DWG. NO.	A	CUSTOMER
AA-2714-	.310	.261	.871	.139	08X(.173 ^{±005})	SNAP SPADE SHORT TONGUE TERMINAL. INSULKRIMP SERIES	GZ	4-5-85	CHKD. BY: APPRD. BY:
AA-2715-	.330	.261	.919	.156	10X(.198 ^{±005})				
DIMENSIONAL TOLERANCES UNLESS OTHERWISE SPECIFIED									
FRAC. DEC. ANG.									
± ± ±									

