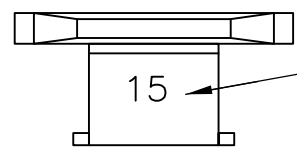


THIS DRAWING IS UNPUBLISHED. RELEASED FOR PUBLICATION
 © COPYRIGHT - By - ALL RIGHTS RESERVED.

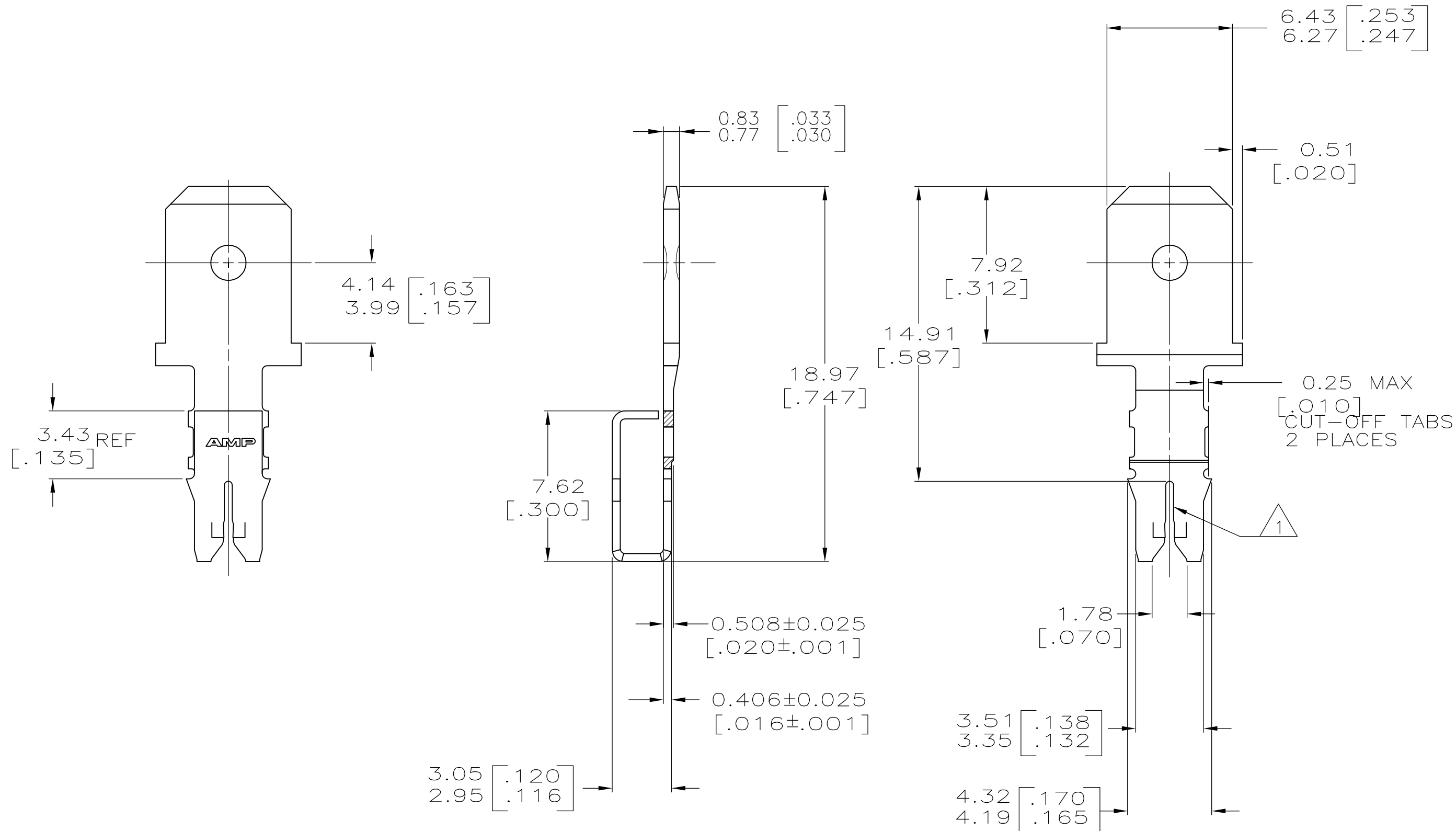
LOC	DIST	REVISIONS				
P	LTR	DESCRIPTION	DATE	DWN	APVD	
AF	50	C2	ECR-15-005665	10AUG2015	BDA	PKS



IDENTIFICATION NUMBER 15 FOR
MAGNET WIRE RANGE

1 SLOT TERMINATES A SINGLE MAGNET WIRE, COPPER RANGE IS 0.64-0.81mm [#22-#20] AWG. ALUMINUM RANGE IS 0.72-0.91mm [#21-#19] AWG. ALUMINUM WIRE RANGE APPLIES FOR POST-TIN PLATED VERSIONS ONLY.

2 AFTER INSERTION INTO PLASTIC HOLDER TAB PORTION MUST BE BENT OVER 45° TO 90° OR POTTED-IN TO PREVENT PULL-OUT WHEN MATING RECEPTACLE IS DISCONNECTED.



1217031

B

A

1217031-1
PART NUMBER

THIS DRAWING IS A CONTROLLED DOCUMENT.		DWN	24NOV97			TE Connectivity			
DIMENSIONS: mm [INCHES]		CHK	24NOV97			NAME		TAB, 6.35[.250] FASTON™, LOOSE PIECE, MAG-MATE™	
TOLERANCES UNLESS OTHERWISE SPECIFIED:		APVD	24NOV97			PRODUCT SPEC		108-2012	
0 PLC ± -		APPLICATION SPEC				114-2046		SIZE	
1 PLC ± -		MATERIAL		WEIGHT		A2 00779			
2 PLC ± 0.25[.010]		FINISH		CUSTOMER DRAWING		SCALE 5:1			
3 PLC ± -		TIN PLATE		DRAWING NO		SHEET 1 of 1			
4 PLC ± -				RESTRICTED TO		REV C2			
ANGLES ± -									