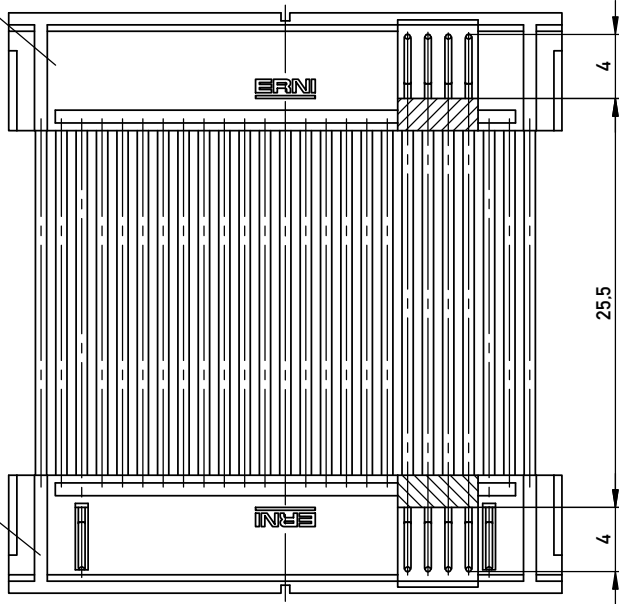
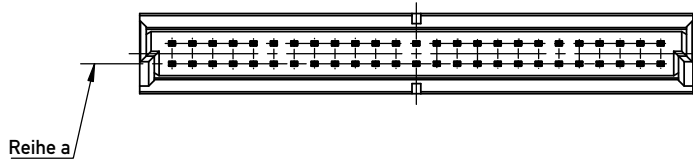
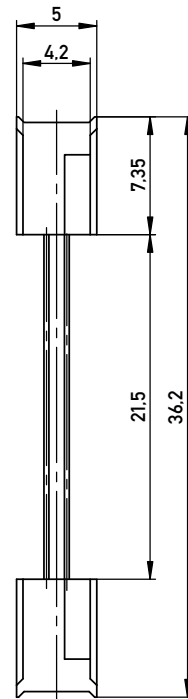
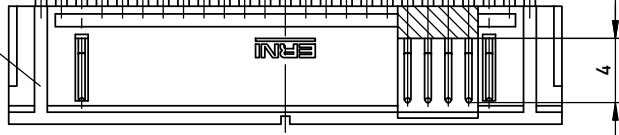


ohne Verriegelung
without interlocking

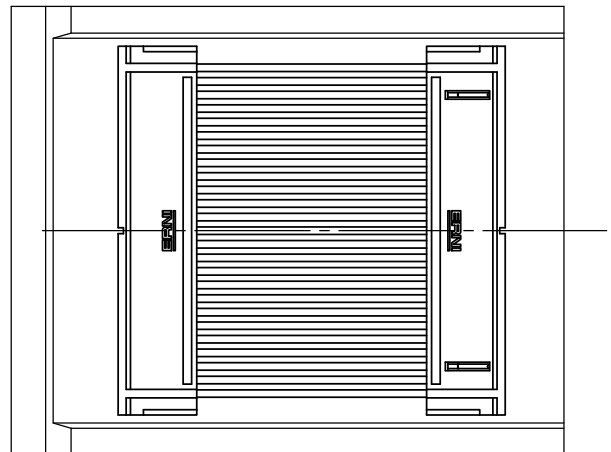
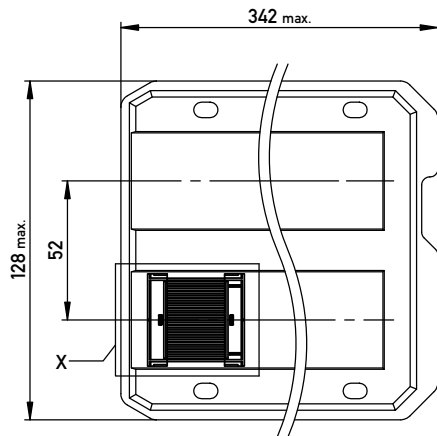


mit Verriegelung
with interlocking



verpackt in Tray -tray packaging
Verpackungseinheit 16 Stück -packaging unit 16

Einzelheit X (M 2:1)
detail X



Adapterstück für board-to-board Abstand von 38mm (beidseitig verbaut mit Federleiste: 154807, Low Profile)
Adapter for board-to-board height 38mm (in combination with two female connectors: 154807, low profile)

Information:	Tolerances	All Dimensions in mm	Scale	3:1
	All rights reserved. Only for Information. To ensure that this is the latest version of this drawing, please contact one of the ERNI companies before using.	Subject to modification without prior notice. Drawing will not be updated.	Designation	1,27 DRC Adapterstück BTB 38mm <i>50-polig</i>
Copyright by ERNI GmbH Proprietary notice pursuant to ISO 16016 to be observed.	www.ERNI.com		354316	I A3
a	28.07.2015			
Index	Date		Class	DRCBTB