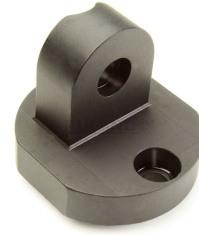
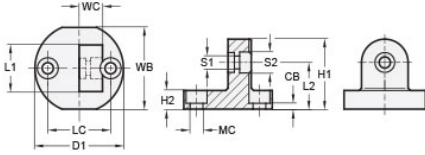




MT15:16-CBSW-25-AN

Ruland Swivel Clamp Connector Base, Ruland Swivel Thru Hole 6.5mm, Clamp Width 25mm, Clamp Screw M6, Black Anodized Aluminum



Description

Ruland MT15:16-CBSW-25-AN is a swivel clamp connector base with a 41mm base width, 45mm base diameter, 25mm clamp width, M6 clamp screw, and 37mm overall length. It is designed to fit with MT15, MT16, and MT15:16 swivel clamp joints, t-swivel clamp joints, and swivel mounts with the same width and height. When combined with a swivel clamp or connector MT15:16-CBSW-25-AN is an ideal articulating mounting solution for screens, sensors, reflectors, plexiglass machine guards, and other components that require frequent adjustments. An MT15:16-SWALK-M6-25 adjustable clamping handle can be used to join it to clamps and connectors for rapid repositioning without the use of tools. It is aluminum with a black anodized finish and screws are 304 stainless steel for added corrosion resistance when compared to unplated types. MT15:16-CBSW-25-AN can be permanently installed on extruded aluminum frames, sheet metal, and other surfaces using M6 hardware or the user can opt for portability by using MAGNET-57-32 magnetic base. It is manufactured by Otto Ganter, inventoried by Ruland, and RoHS3 compliant.

Product Specifications

Base Width WB	41 mm	Base Height H2	10 mm
Base Diameter D1	45 mm	Clamp Length L1	25 mm
Clamp Width WC	12.5 mm	Overall Height H1	37 mm
Center To Center LC	32 mm	Edge To Center L2	24.5 mm
Mounting Counterbore Diameter MC	M6	Counterbore to Base CB	4 mm
Swivel Counterbore 1 Diameter S1	6.5 mm	Swivel Counterbore 2 Diameter S2	10.5 mm
Material Specification	Anodized Aluminum	Manufacturer	JW Winco/ Otto Ganter
Country of Origin	Germany	Weight (lbs)	0.125700
UPC	634529231425	Tariff Code	7609.00.0000
UNSPC	31162908		