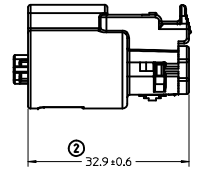
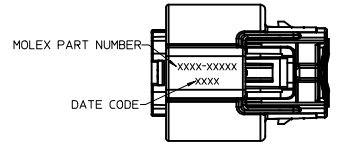
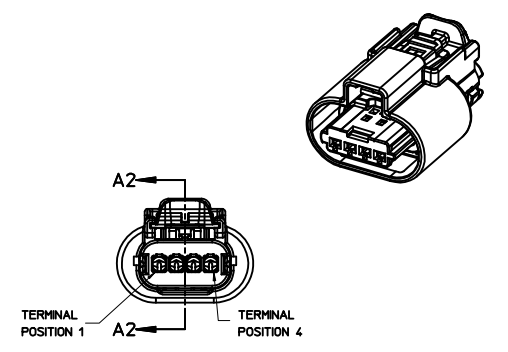


Section A1-A1
PLR SHOWN IN PRE - LOCK POSITION



SECTION A2-A2
PLR SHOWN IN FINAL - LOCK POSITION



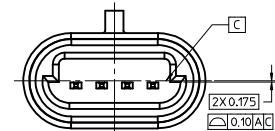
- NOTES:
- GENERAL: SHALL CONFORM TO THE FOLLOWING
 - PRODUCT SPECIFICATION: DVP&R 1404
 - PACKAGING SPECIFICATION: PK-31300-635
 - APPLICATION SPECIFICATION: AS-34770-001
 - FOR MATING INTERFACES SEE APPLICATION SPECIFICATION.
 - ASSEMBLY SHIPPED WITH PLR / CPA IN PRE-LOCK POSITION FOR FURTHER INFORMATION SEE APPLICATION SPECIFICATION. PLR MAY BECOME SEATED DURING SHIPPING PER PS-34646-001.
 - FOR RECEPTACLE TERMINALS TO BE USED WITH THIS ASSEMBLY SEE APPLICATION SPECIFICATION.
 - DESIGN - MATERIAL: SEE BOM TABLE
 - DESIGN - GEOMETRY:
 - THIS IS A 100% CAD GENERATED PART, THE CAD MATHEMATICAL DATA IS THE MASTER FOR THIS PART, FOR DIMENSIONAL OR ANY INFORMATION NOT SHOWN ON THIS DRAWING, ANALYZE THE CAD MODEL.
 - PACKAGING: IN THE EVENT THAT THE PLR IS FOUND IN THE SEATED (FINAL LOCK) POSITION, REFER TO MOLEX SPECIFICATION PS-34646-001, AVAILABLE AT WWW.MOLEX.COM

MOLEX ASM NUMBERS	KEYING OPTION	KEYING COLOR	TERMINAL CAVITY STATUS X = PLUGGED				STATUS
			1	2	3	4	
34770-0401	A	BLACK					NOT AVAILABLE
34770-0402	B	LIGHT GRAY					SALEABLE
34770-0403	C	DARK GRAY					NOT AVAILABLE
34770-0404	D	BLACK					NOT AVAILABLE

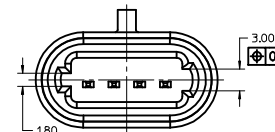
B2	34770-0402 REVISION AS SALEABLE
B1	REVISED HOUSING GROMMET CAP INTERFACE
B	ADDED NOTE 4
A3	REVISED HOUSING GROMMET CAP INTERFACE
A2	ADDED KEY OPTIONS A,C,D
A1	33531-0406 WAS 33531-0401 IN BOM
A	REMOVED PART NUMBER 34770-9402
A	RELEASE TO PRODUCTION
3	ADDED ASSEMBLY NUMBER 34770-9402 AND OPTIONAL PLR 34770-6402
2	OK TO TOOL
1	INITIAL RELEASE

DESCRIPTION	MATERIAL	COLOR	NO. OF ITEMS REQUIRED
HOUSING	SPS/NYLON GF20	BLACK	1 1 1 1 1
PLR (KEY OPTION A)	SPS/NYLON GF30	BLACK	1
PLR (KEY OPTION B)	SPS/NYLON GF30	LIGHT GRAY	1
PLR (KEY OPTION C)	SPS/NYLON GF30	DARK GRAY	1
PLR (KEY OPTION D)	SPS/NYLON GF30	BLACK	1
PERMETER SEAL	SILICONE	RUST RED	1 1 1 1 1
GROMMET CAP	SPS/NYLON GF20	BLACK	1 1 1 1 1
GROMMET SEAL	SILICONE	LT. BLUE	1 1 1 1 1
CPA	PBT GF35	RED	1 1 1 1 1

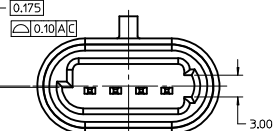
ENTER DESCRIPTION IEC NO. UAU2016-0866 DRAWN BY DRWN:KOWALSKI CHKD: LJSLE APPR:DC LJSLE DATE 2015/10/27 2015/10/27	QUALITY SYMBOLS ∇=0 ∇=0 ∇=0	GENERAL TOLERANCES (UNLESS SPECIFIED) DIMENSION STYLE MM ONLY 4 PLACES ± mm ± INCH 3 PLACES ± --- ± --- 2 PLACES ± 0.10 ± --- 1 PLACE ± 0.20 ± --- 0 PLACE ± --- ± --- ANGULAR ± 3 ° DRAFT WHERE APPLICABLE MUST REMAIN WITHIN DIMENSIONS	DIMENSION STYLE MM ONLY DRAWN BY DATE SVERZYL 2010/10/04 CHECKED BY DATE APPROVED BY DATE VKOSHY 2010/10/22	MATERIAL NO. SEE TABLE	DESCRIPTION MX150 1X4 SEALED RECEPTACLE, ASSEMBLY	THIRD ANGLE PROJECTION	SHEET NO. 1 OF 2



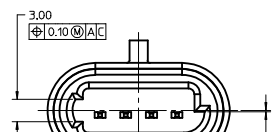
150-S-004-1-A02
(KEYING OPTION A)



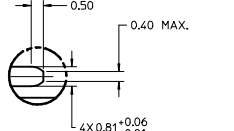
150-S-004-1-B02
(KEYING OPTION B)



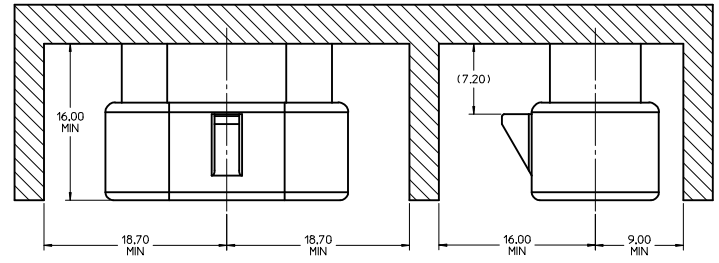
150-S-004-1-C02
(KEYING OPTION C)



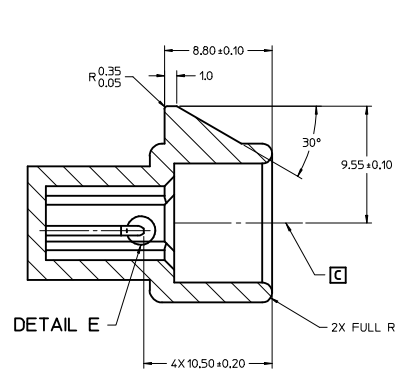
150-S-004-1-D02
(KEYING OPTION D)



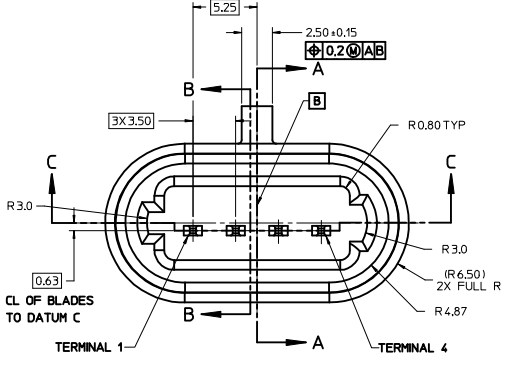
DETAIL E
SCALE 10:1



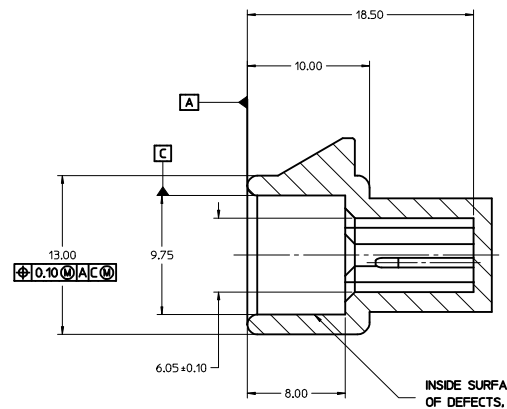
IF HEADER IS RECESSED IN A POCKET, THE DIMENSIONS IN ABOVE VIEW REPRESENTS THE CLEARANCE REQUIRED FOR THE MATING SHROUD



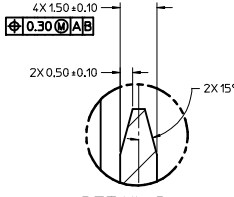
Section A-A



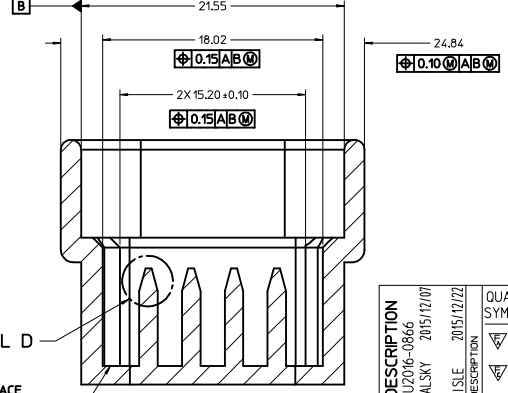
Section B-B



INSIDE SURFACES TO BE FREE OF DEFECTS, PARTING LINES, MOLD MISMATCH AND KNOT LINES



DETAIL D
SCALE 10:1



Section C-C

SEE DETAIL D

CONSTRUCTION BELOW THIS SURFACE IS NOT CONTROLLED BY EWCAP. NO PLASTIC FEATURES MAY EXTEND ABOVE THIS SURFACE.

NOTES: UNLESS OTHERWISE SPECIFIED

1. ALL DIMENSIONS SHOWN IN MILLIMETERS.
2. DIMENSIONING AND TOLERANCING PER ASME Y14.5M-1994
3. RADI ON ALL CORNERS SHOWN SHARP OR ALL UNSPECIFIED RADI: 0.25 EXCEPT AS NOTED.
4. REFER TO 'SAE/USCAR-12 CONNECTOR DESIGN GUIDELINES' FOR ADDITIONAL INFORMATION.
5. 1° DRAFT MAX. ON OUTSIDE SURFACES PERMISSIBLE WITHIN ALLOWABLE TOLERANCE.
6. FOR INFORMATION NOT SHOWN REGARDING BLADE REQUIREMENTS, REFER TO EWCAP DWG. NO. EWCAP-001 REV. F, DETAIL '50-T001

ENTER DESCRIPTION EC NO: UAU2016-0866 DRYNKAŁOWSKI 2015/12/07 CHYD: APPROV: LLSLE APPR: C. LLSLE REV: B2	QUALITY SYMBOLS ∇=0 ∇=0 ∇=0	GENERAL TOLERANCES (UNLESS SPECIFIED) <table border="1"> <tr> <th></th> <th>mm</th> <th>INCH</th> </tr> <tr> <td>4 PLACES</td> <td>± 0.10</td> <td>± 0.004</td> </tr> <tr> <td>3 PLACES</td> <td>± 0.15</td> <td>± 0.006</td> </tr> <tr> <td>2 PLACES</td> <td>± 0.20</td> <td>± 0.008</td> </tr> <tr> <td>1 PLACE</td> <td>± 0.30</td> <td>± 0.012</td> </tr> <tr> <td>0 PLACE</td> <td>± 0.40</td> <td>± 0.016</td> </tr> </table>		mm	INCH	4 PLACES	± 0.10	± 0.004	3 PLACES	± 0.15	± 0.006	2 PLACES	± 0.20	± 0.008	1 PLACE	± 0.30	± 0.012	0 PLACE	± 0.40	± 0.016	DIMENSION STYLE MM ONLY DRAWN BY: SVERZYL DATE: 2010/10/04 CHECKED BY: DATE: APPROVED BY: VKOSHY DATE: 2010/10/22	SCALE: 5:1 DESIGN UNITS: METRIC THIRD ANGLE PROJECTION	TITLE: MX150 1X4 SEALED RECEPTACLE, ASSEMBLY molex MATERIAL NO: SEE TABLE DOCUMENT NO: SD-34770-040	SHEET NO: 2 OF 2
		mm	INCH																					
	4 PLACES	± 0.10	± 0.004																					
	3 PLACES	± 0.15	± 0.006																					
2 PLACES	± 0.20	± 0.008																						
1 PLACE	± 0.30	± 0.012																						
0 PLACE	± 0.40	± 0.016																						
ANGULAR ± 3° DRAFT WHERE APPLICABLE MUST REMAIN WITHIN DIMENSIONS		THIS DRAWING CONTAINS INFORMATION THAT IS PROPRIETARY TO MOLEX INCORPORATED AND SHOULD NOT BE USED WITHOUT WRITTEN PERMISSION																						