

## Han 6HvE-M-c

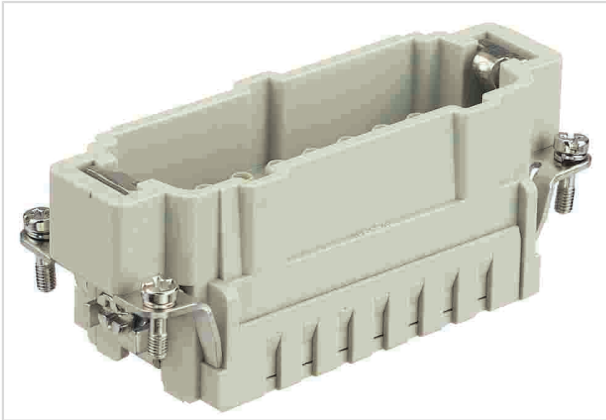


Image is for illustration purposes only. Please refer to product description.

Part number	09 34 006 2602
Specification	Han 6HvE-M-c
HARTING eCatalogue	<a href="https://b2b.harting.com/09340062602">https://b2b.harting.com/09340062602</a>

### Identification

Category	Inserts
Series	Han Hv E®

### Version

Termination method	Crimp termination
Gender	Male
Size	16 B
Number of contacts	6
further contacts	+ 2 additional relay contacts
PE contact	Yes
Details	Please order crimp contacts separately.

### Technical characteristics

Conductor cross-section	0.5 ... 4 mm <sup>2</sup>
Conductor cross-section	AWG 20 ... AWG 12
Rated current	16 A
Rated voltage	830 V
Rated impulse voltage	8 kV
Pollution degree	3
Rated voltage acc. to UL	600 V
Rated voltage acc. to CSA	600 V
Insulation resistance	>10 <sup>10</sup> Ω
Limiting temperature	-40 ... +125 °C



Pushing Performance

## Technical characteristics

Mating cycles	≥500
---------------	------

## Material properties

Material (insert)	Polycarbonate (PC)
Colour (insert)	RAL 7032 (pebble grey)
Material flammability class acc. to UL 94	V-0
RoHS	compliant
ELV status	compliant
China RoHS	e
REACH Annex XVII substances	No
REACH ANNEX XIV substances	No
REACH SVHC substances	No
California Proposition 65 substances	Yes
California Proposition 65 substances	Nickel Lead

## Specifications and approvals

Specifications	EN 60664-1 IEC 61984
UL / CSA	UL 1977 ECBT2.E235076

## Commercial data

Packaging size	1
Net weight	59 g
Country of origin	Germany
European customs tariff number	85389099
eCl@ss	27440205 Contact insert for industrial connectors