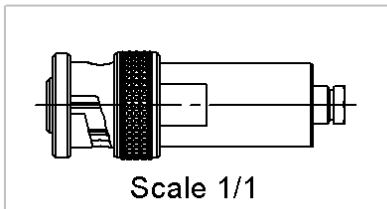
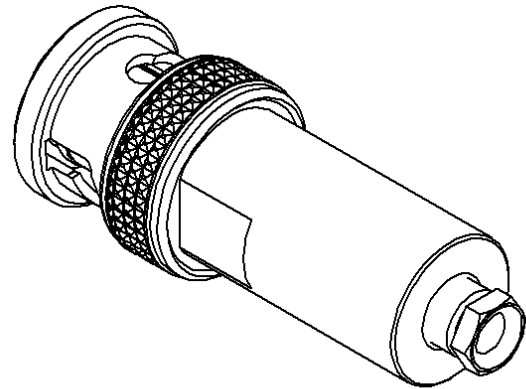
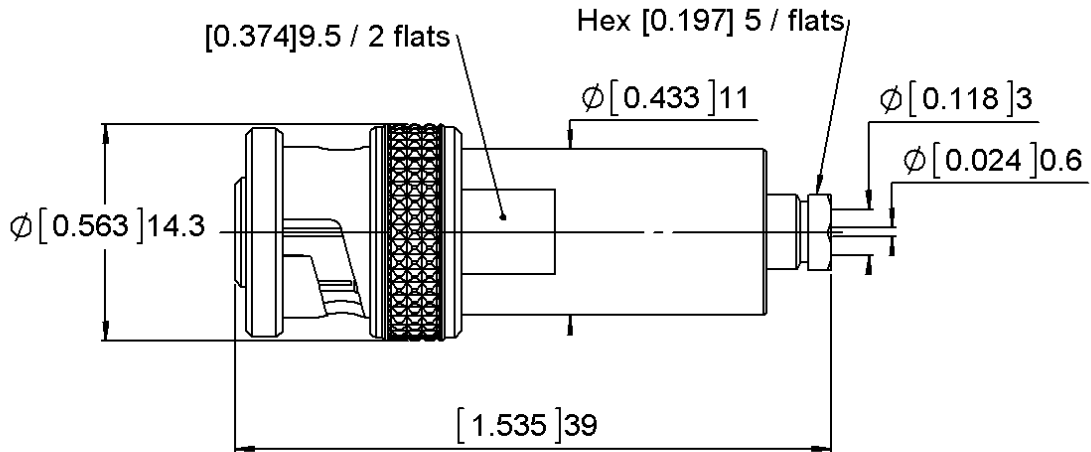
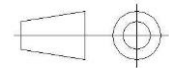


PAGE 1/3	ISSUE 1449 B	SERIES BNC-HT / MHV	PART NUMBER R316004000
----------	--------------	----------------------------	-------------------------------



All dimensions are in mm.



COMPONENTS	MATERIALS	PLATING (μm)
Body	BRASS	NICKEL2
Center contact	BRASS	-SILVER
Outer contact	-	-
Insulator	PTFE	
Gasket	-	
Others parts	BRASS	NICKEL2
-	-	-
-	-	-

PAGE 2/3	ISSUE 1449 B	SERIES BNC-HT / MHV	PART NUMBER R316004000
-----------------	---------------------	----------------------------	-------------------------------

PACKAGING

Standard	Unit	Other
100	Contact us	Contact us

ELECTRICAL CHARACTERISTICS

Impedance	50	Ω
Frequency	0-2	GHz
VSWR	1.2 + 0.2000	x F(GHz) Maxi
Insertion loss	-	\sqrt{F} (GHz) dB Maxi
RF leakage	- (- F(GHz)) dB Maxi
Voltage rating	-	Veff Maxi
Dielectric withstanding voltage	6000*	Veff mini
Insulation resistance	-	M Ω mini

MECHANICAL CHARACTERISTICS

Center contact retention		
Axial force – Mating End	NA	N mini
Axial force – Opposite end	NA	N mini
Torque		N.cm mini
Recommended torque		
Mating	0	N.cm
Panel nut	0	N.cm
Clamp nut	40	N.cm
A/F clamp nut	5.0000	mm
Mating life	500	Cycles mini
Weight	19.9200	g

ENVIRONMENTAL

Operating temperature	-55/+155	$^{\circ}\text{C}$
Hermetic seal	-	Atm.cm3/s
Panel leakage	-	

SPECIFICATION

CABLE ASSEMBLY

Stripping	a	b	c	d	e	f
mm	0	0	0	0	0	0

Assembly instruction:

Recommended cable(s)

RG174

Characteristics indicated on this data sheet are those that can be achieved with the highest performance cable. Intrinsic limitations of the cable may diminish the performance of the assembly

Cable retention

- pull off	110	N mini
- torque	NA	N.cm

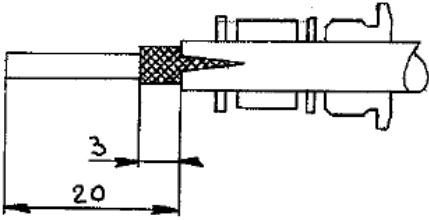
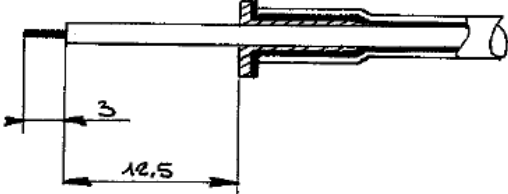
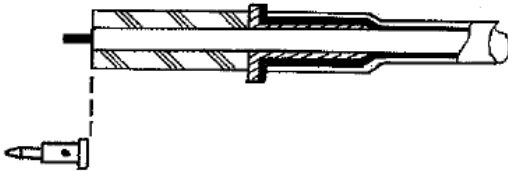
TOOLING

Part Number	Description	Hexagon
.	.	.

OTHER CHARACTERISTICS

***Test frequency at 60Hz;
10 KVeFF for mated pair**

PAGE 3/3	ISSUE 1449 B	SERIES BNC-HT / MHV	PART NUMBER R316004000
----------	--------------	---------------------	------------------------

<ul style="list-style-type: none"> - Dénuder le câble. - Fente facultative de la gaine. 		<p>Strip off the cable. Optional slot on sheath.</p>
<ul style="list-style-type: none"> - Monter la bague serre-tresse. - Couper la tresse au diamètre du serre-tresse. - Dénuder l'âme. 		<p>Assemble the braid clamp. Cut braid to braid-clamp diameter. Strip off core.</p>
<ul style="list-style-type: none"> - Monter l'isolant d'adaptation. - Souder la broche en appui sur le diélectrique. - Monter dans le corps du connecteur et bloquer le bouchon presse-étoupe. 		<p>Assemble adaptation insert. Solder pin contact against dielectric. Mount assembly in connector body and lock cable clamp.</p>