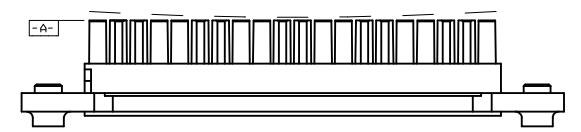
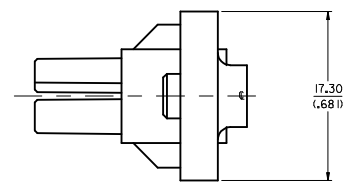
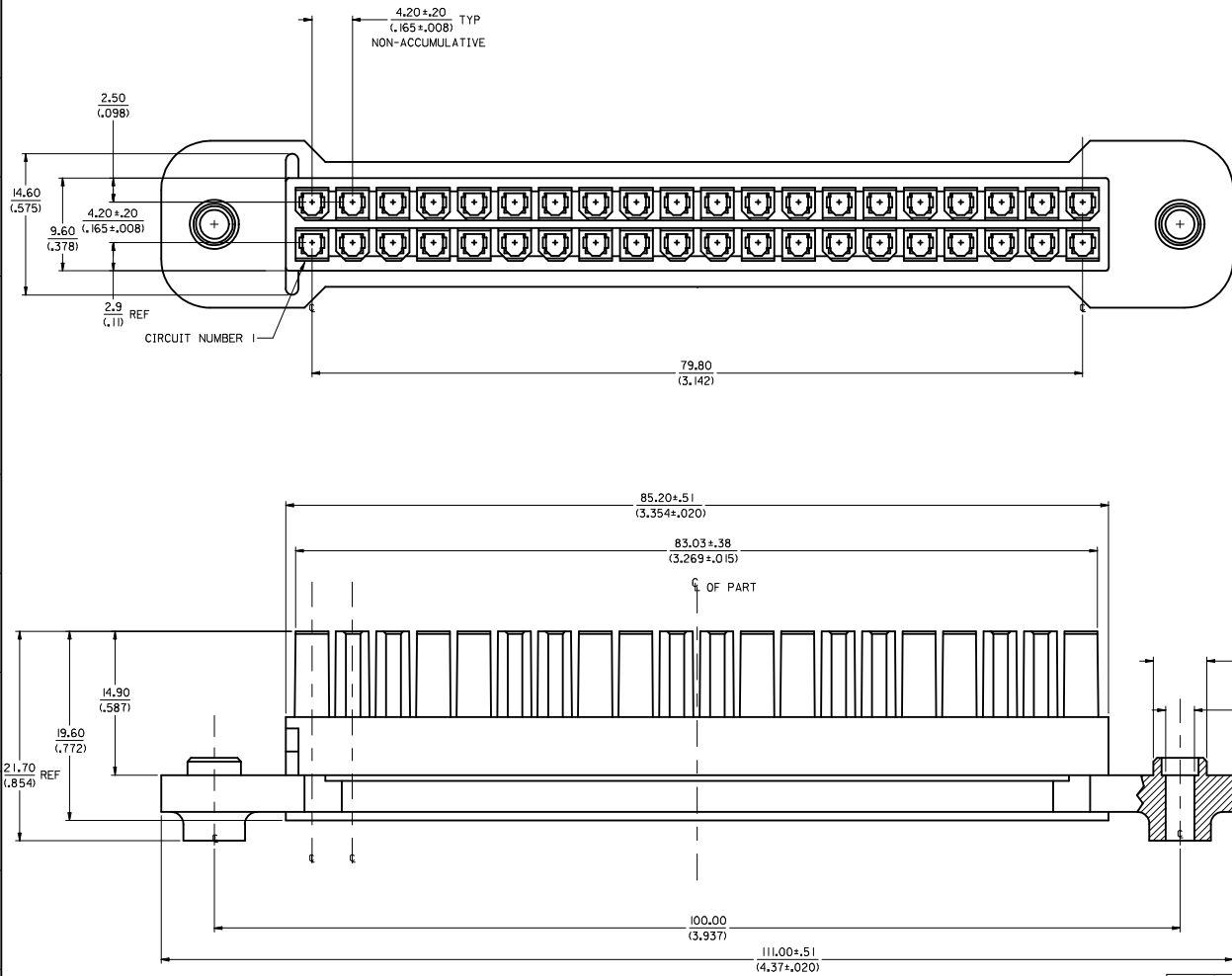


20 19 18 17 16 15 14 13 12 11 10 9 8 7 6 5 4 3 2 1

M
L
K
J
I
H
G
F
E
D
C
B
A



NOTES:

1. MATERIAL:
NYLON 46, GLASS-FILLED, UL94V-0,
COLOR - BLACK
2. FINISH: NONE
3. PRODUCT SPECIFICATION: PS-43759-0001
4. PART IS FOR USE WITH 5556, 44476 AND 45750 SERIES TERMINALS.
5. THIS CONNECTOR ALLOWS FOR .050/(1.27) MAX. MISALIGNMENT IN ANY DIRECTION.
6. A MAXIMUM TOLERANCE OF .050/(1.27) ALLOWS FOR 2 POINTS OF ELECTRICAL CONTACT. A MAXIMUM TOLERANCE OF .020/(0.51) ALLOWS FOR 4 POINTS OF CONTACT.
7. PART MATES WITH MINI-FIT B.M.I. HEADER #43973.
8. CONNECTOR ASSEMBLIES ARE NOT TO BE MATED OR UNMATED WHILE CIRCUITS ARE LIVE.
9. PANEL OPENING EDGES MUST BE FREE OF BURRS
10. PART BOW SPECIFICATION MEASURED AT DATUM [-A-] = .15/(.006) PER INCH MAXIMUM, BOW DIRECTION DEFINED BY FIGURE 1.
11. MAXIMUM TORQUE FOR SELF TAPPING SCREW IS NOT TO EXCEED 12.0 IN/LBS.
- IT IS IMPORTANT TO NOTE THAT WHERE OFF AXIS THREADING HAS OCCURRED, THE RECOMMENDED MAXIMUM TORQUE MAY PREVENT THE RECEPTACLE FROM ACHIEVING THE NECESSARY AMOUNT OF FREEDOM. IN THESE INSTANCES, THE AMOUNT OF FORCE REQUIRED TO FLOAT THE RECEPTACLE WITHIN ITS RESPECTIVE PANEL OPENING SHALL NOT EXCEED A MAXIMUM OF 10 LB. A MOUNTING TORQUE LESS THAN THE RECOMMENDED MAXIMUM MAY BE NEEDED.
12. IT IS THE RESPONSIBILITY OF THE CUSTOMER TO ENSURE THAT THE PANEL TO WHICH THE RECEPTACLE IS TO BE MOUNTED, IS SUFFICIENTLY SUPPORTED SO THAT FLEXING OF THE PANEL DURING MATING DOES NOT PREVENT THE CONNECTOR SYSTEM FROM BEING FULLY MATED.
13. IT IS RECOMMENDED THAT THE CABLES EXITING THE RECEPTACLE BE DRESSED IN A MANNER THAT WILL ALLOW THE RECEPTACLE TO FLOAT FREELY WHEN MOUNTED IN IT'S RESPECTIVE PANEL.

FIGURE 1

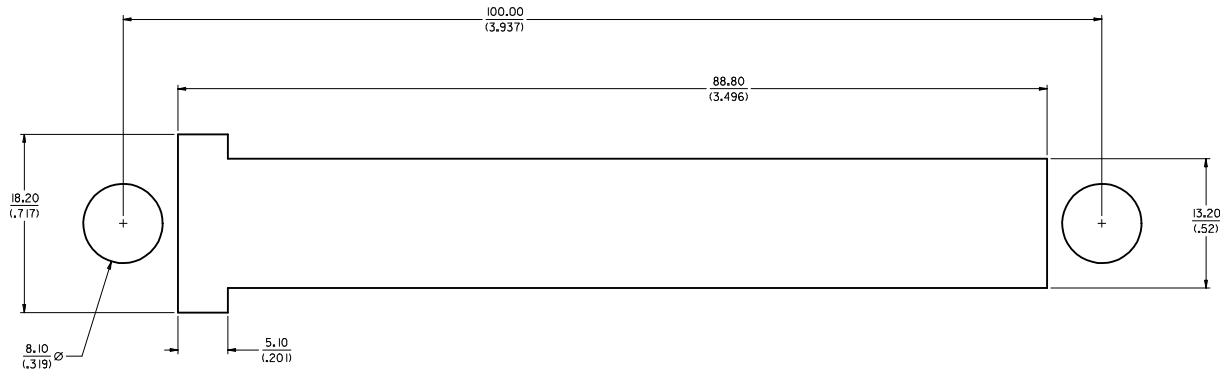
MIGRATE FROM METO EEC NO: UCP2016-3382 DRAWN BY: 2016/02/26 CHKD: BEL 2016/02/26 APPR: FSMITH 2016/03/02	QUALITY SYMBOLS	GENERAL TOLERANCES (UNLESS SPECIFIED)	DIMENSION STYLE	SCALE	DESIGN UNITS	THIRD ANGLE PROJECTION
	▽=0	mm INCH	MM/IN	4:1	METRIC	☉
	▽=0	4 PLACES ± .015	BANDURA 2001/03/18			
	▽=0	3 PLACES ± .015	CHECKED BY: DATE			
		2 PLACES ± 0.38	BANDURA 2001/03/20			
		1 PLACE ± .015	APPROVED BY: DATE			
		0 PLACE ± .015	FSMITH 2016/03/02			
		ANGULAR ± 1/2°	MATERIAL NO.	DOCUMENT NO.		
		DRAFT WHERE APPLICABLE MUST REMAIN WITHIN DIMENSIONS	439740005	SD-43974-005		
			SIZE D			
			THIS DRAWING CONTAINS INFORMATION THAT IS PROPRIETARY TO MOLEX INCORPORATED AND SHOULD NOT BE USED WITHOUT WRITTEN PERMISSION			

19 18 17 16 15 14 13 12 11 10 9 8 7 6 5 4 3 2 1

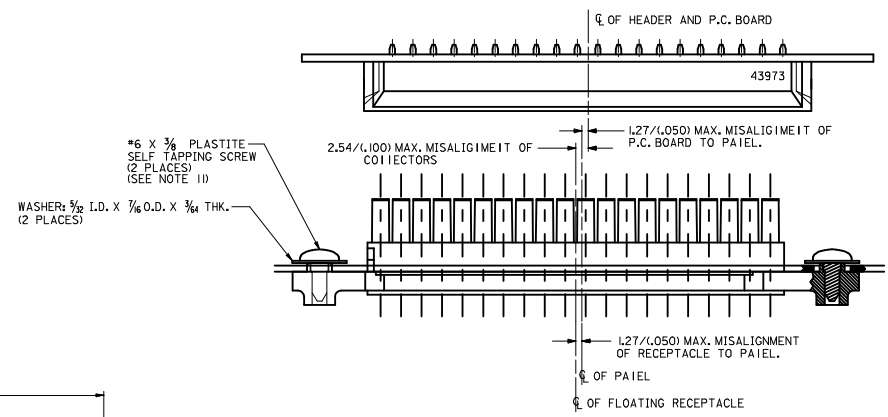
M
L
K
J
I
H
G
F
E
D
C
B
A

20 19 18 17 16 15 14 13 12 11 10 9 8 7 6 5 4 3 2 1

M L K J I H G F E D C B A



RECOMMENDED PANEL CUT-OUT FOR 1.27±0.30/(±0.050±0.012) THICK PANEL
(SEE NOTE 9)



ALIGNMENT TOLERANCES FOR 1.27/(±0.050) MAX. BOARD-TO-PANEL MISALIGNMENT
(±1.27/(±0.050) RECEPTACLE FLOAT)

SEE SHEET 1 IEC NO. UCP2016-3382 DRAWN BY: DRANKS/AFTER CHYK/BELL APPR:FSM/TH 2016/02/26 2016/02/26 2016/03/02	QUALITY SYMBOLS	GENERAL TOLERANCES (UNLESS SPECIFIED)	DIMENSION STYLE	SCALE	DESIGN UNITS	THIRD ANGLE PROJECTION
	∇=0 ∇=0 ∇=0	mm INCH 4 PLACES ± --- ± --- 3 PLACES ± --- ± .015 2 PLACES ± 0.38 ± --- 1 PLACE ± --- ± --- 0 PLACE ± --- ± ---	MM/IN 4:1	DRAWN BY DATE BANDURA 2001/03/18 CHECKED BY DATE BANDURA 2001/03/20 APPROVED BY DATE FSMITH 2016/03/02	MATERIAL NO. SEE CHART	DOCUMENT NO. SD-43974-005

TITLE
**PANEL MOUNT RECEPTACLE
40 CIRCUIT BLIND MATE
MINI-FIT SERIES**

molex

THIS DRAWING CONTAINS INFORMATION THAT IS PROPRIETARY TO MOLEX INCORPORATED AND SHOULD NOT BE USED WITHOUT WRITTEN PERMISSION

19 18 17 16 15 14 13 12 11 10 9 8 7 6 5 4 3 2 1