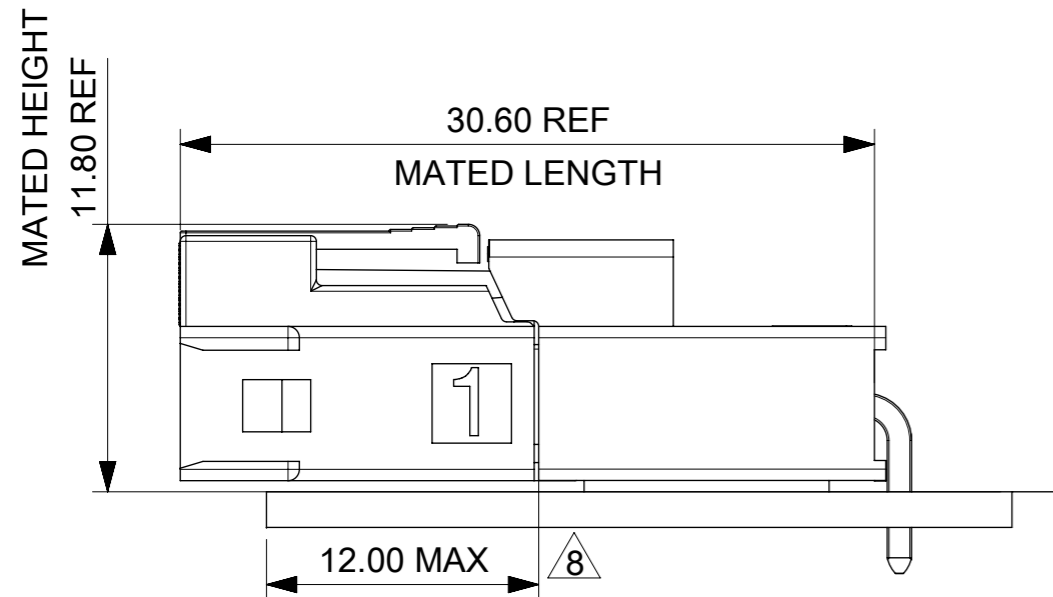
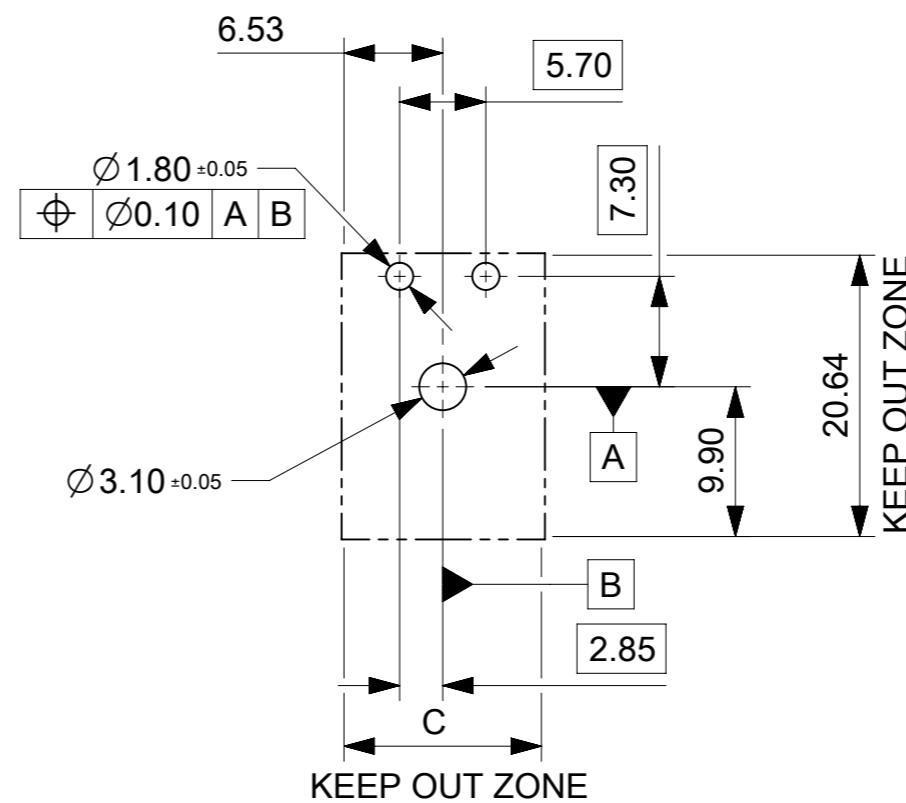
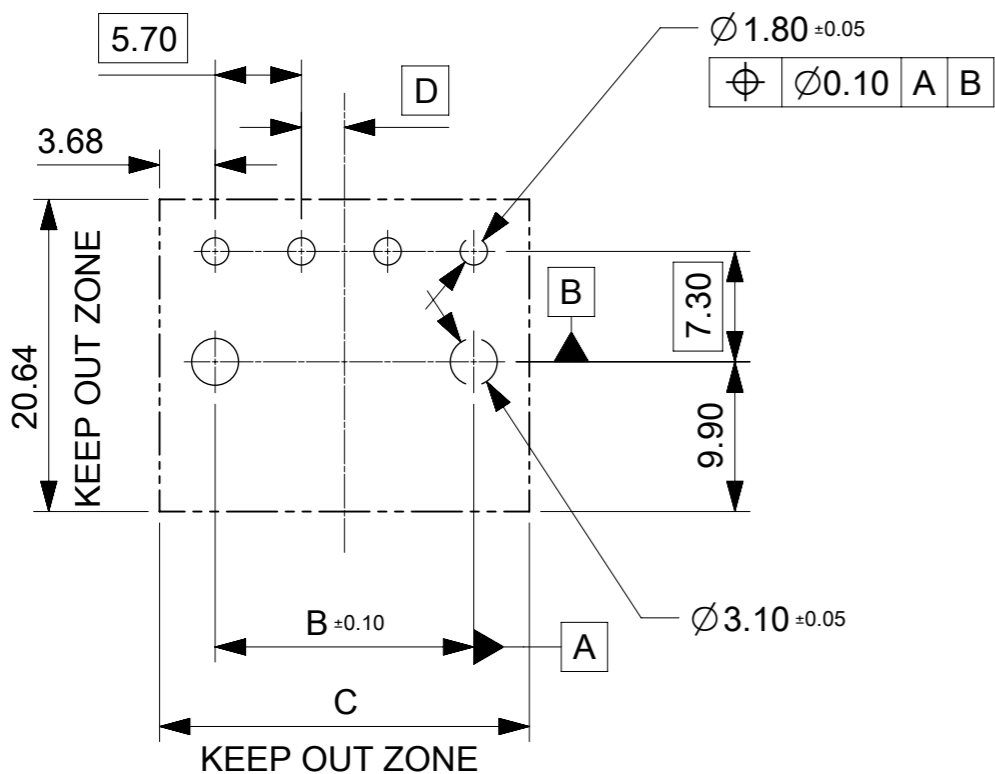
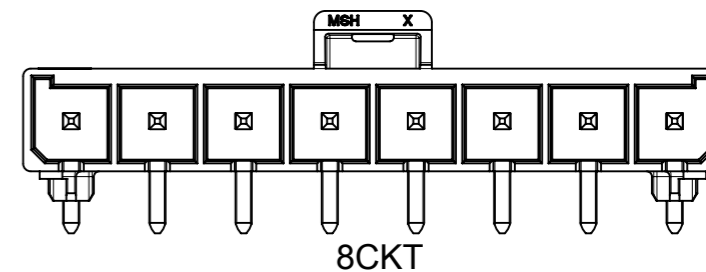
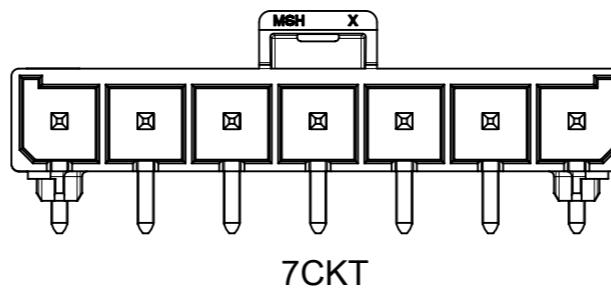
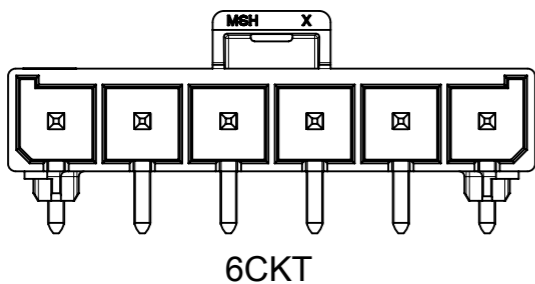
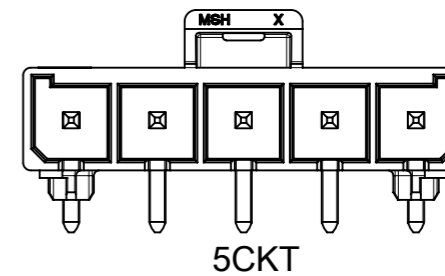
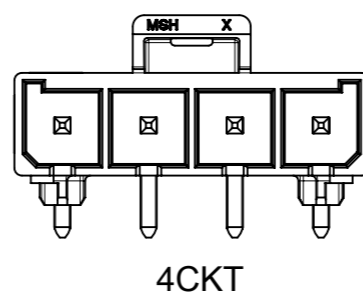
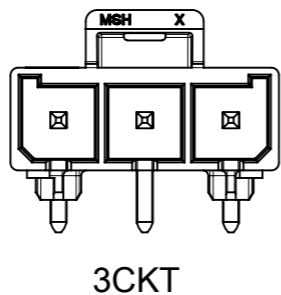
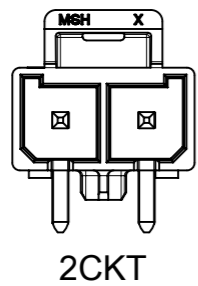


NOTES:

1. MATERIAL:  
HOUSING LCP, UL94V-0, GLOW WIRE CAPABLE PER IEC-60335-1 5TH EDITION, COLOR: BLACK .  
TERMINAL: HIGH CONDUCTIVITY COPPER.
2. TERMINAL PLATING:  
(TIN) 1.52 MICROMETER MIN (60 MICROINCH MIN) REFLOWED MATTE TIN OVER  
1.27 MICROMETER MIN (50 MICROINCH MIN) MIN NICKEL OVERALL.  
(15 GOLD) 0.38 MICROMETER MIN (15 MICROINCH MIN) SELECTIVE GOLD ON CONTACT AREA  
WITH 2.54 MICROMETER MIN (100 MICROINCHES MIN) SELECTIVE TIN ON SOLDER AREA  
BOTH OVER 1.27 MICROMETER MIN (50 MICROINCHES MIN) NICKEL OVERALL.  
(30 GOLD) 0.76 MICROMETER MIN (30 MICROINCH MIN) SELECTIVE GOLD ON CONTACT AREA  
WITH 2.54 MICROMETER MIN (100 MICROINCHES MIN) SELECTIVE TIN ON SOLDER AREA  
BOTH OVER 1.27 MICROMETER MIN (50 MICROINCHES MIN) NICKEL OVERALL.
3. PRODUCT SPECIFICATION 1720631000-PS.
4. PACKAGING SPECIFICATION SEE TABLE.
5. PART MATES WITH MOLEX PART NUMBER 200456 SERIES.
6. APPLICATION SPECIFICATION: 768232000-AS
7. PARTS CONFORM TO CLASS "B" REQUIREMENTS OF COSMETIC SPECIFICATION PS-45499-002.
8. TO AVOID INTERFERENCE BETWEEN RECEPTACLE AND PCB, HEADER MUST BE PLACED WITHIN 12.00MM MAX FROM EDGE OF PCB



THIS DRAWING CONTAINS INFORMATION THAT IS PROPRIETARY TO MOLEX ELECTRONIC TECHNOLOGIES, LLC AND SHOULD NOT BE USED WITHOUT WRITTEN PERMISSION									
DIMENSION UNITS		SCALE		CURRENT REV DESC:				<b>molex</b>	
mm		NTS							
GENERAL TOLERANCES (UNLESS SPECIFIED)								MEGA-FIT S/R HEADER ASSEMBLY(R/A)	
ANGULAR TOL ± 3.0 °								PRODUCT CUSTOMER DRAWING	
4 PLACES ±				EC NO: 743219		2023/03/14		DOCUMENT NUMBER	
3 PLACES ±				DRWN: WYATTH5		2023/03/22		DOC TYPE DOC PART REVISION	
2 PLACES ± 0.25				CHK'D: XQZHANG		2023/03/22		2002412000 PSD 000 D2	
1 PLACE ± 0.35				APPR: XQZHANG		2023/03/22			
0 PLACES ±				INITIAL REVISION:					
DRAFT WHERE APPLICABLE MUST REMAIN WITHIN DIMENSIONS		THIRD ANGLE PROJECTION		DRAWING		SERIES		MATERIAL NUMBER	
		A3-SIZE		200241		SEE TABLE		CUSTOMER	
				GENERAL MARKET		1 OF 3			


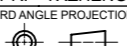


PCB LAYOUT:  
 1.COMPONENT SIDE  
 2.RECOMMEND PCB THICKNESS:1.58MM/.062IN TO 2.36MM/.093IN

THIS DRAWING CONTAINS INFORMATION THAT IS PROPRIETARY TO MOLEX ELECTRONIC TECHNOLOGIES, LLC AND SHOULD NOT BE USED WITHOUT WRITTEN PERMISSION											
DIMENSION UNITS		SCALE		CURRENT REV DESC:						<b>molex</b>	
mm		NTS									
GENERAL TOLERANCES (UNLESS SPECIFIED)				EC NO: 743219						MEGA-FIT S/R HEADER ASSEMBLY(R/A)	
ANGULAR TOL				± 3.0°		DRWN: WYATTH5		2023/03/14		PRODUCT CUSTOMER DRAWING	
4 PLACES				±		CHK'D: XQZHANG		2023/03/22		DOCUMENT NUMBER	
3 PLACES				± 0.25		APPR: XQZHANG		2023/03/22		DOC TYPE	
2 PLACES				± 0.35		INITIAL REVISION:		2016/09/22		DOC PART	
1 PLACE				±		DRWN: YXZHENG		2018/08/06		REVISION	
0 PLACES				±		APPR: YXZHENG				2002412000	
DRAFT WHERE APPLICABLE MUST REMAIN WITHIN DIMENSIONS				THIRD ANGLE PROJECTION		DRAWING		SERIES		MATERIAL NUMBER	
				A3-SIZE		200241		SEE TABLE		CUSTOMER	
						GENERAL MARKET				SHEET NUMBER	
										2 OF 3	

CKT SIZE	RESIN COLER	PART NO.	PLATING	DIM.A	DIM.B	DIM.C	DIM.D	PK DRAW NUMBER
2	BLACK	2002411212	TIN	12.05	N/A	13.05	2.85	2002412000 (TRAY PK SPEC)
3		2002411213		17.75	11.40	18.75	0.00	
4		2002414214		23.45	17.10	24.45	2.85	
5		2002411215		29.15	22.80	30.15	0.00	
6		2002411216		34.85	28.50	35.85	2.85	
7		2002411217		40.55	34.20	41.55	0.00	
8		2002411218		46.25	39.90	47.25	2.85	
2		2002411222		15" GOLD	12.05	N/A	13.05	
3		2002411223	17.75		11.40	18.75	0.00	
4		2002411224	23.45		17.10	24.45	2.85	
5		2002411225	29.15		22.80	30.15	0.00	
6		2002411226	34.85		28.50	35.85	2.85	
7		2002411227	40.55		34.20	41.55	0.00	
8		2002411228	46.25		39.90	47.25	2.85	
2		2002411232	30" GOLD		12.05	N/A	13.05	
3		2002411233		17.75	11.40	18.75	0.00	
4		2002411234		23.45	17.10	24.45	2.85	
5		2002411235		29.15	22.80	30.15	0.00	
6		2002411236		34.85	28.50	35.85	2.85	
7		2002411237		40.55	34.20	41.55	0.00	
8		2002411238		46.25	39.90	47.25	2.85	

CKT SIZE	RESIN COLER	PART NO.	PLATING	DIM.A	DIM.B	DIM.C	DIM.D	PK DRAW NUMBER
2	BLACK	2002411912	TIN	12.05	N/A	13.05	2.85	2002411900 (TAPE&REEL PK SPEC)
3		2002411913		17.75	11.40	18.75	0.00	
4		2002411914		23.45	17.10	24.45	2.85	
5		2002411915		29.15	22.80	30.15	0.00	
6		2002411916		34.85	28.50	35.85	2.85	
7		2002411917		40.55	34.20	41.55	0.00	
8		2002411918		46.25	39.90	47.25	2.85	
2		2002411922		15" GOLD	12.05	N/A	13.05	
3		2002411923	17.75		11.40	18.75	0.00	
4		2002411924	23.45		17.10	24.45	2.85	
5		2002411925	29.15		22.80	30.15	0.00	
6		2002411926	34.85		28.50	35.85	2.85	
7		2002411927	40.55		34.20	41.55	0.00	
8		2002411928	46.25		39.90	47.25	2.85	
2		2002411932	30" GOLD		12.05	N/A	13.05	
3		2002411933		17.75	11.40	18.75	0.00	
4		2002411934		23.45	17.10	24.45	2.85	
5		2002411935		29.15	22.80	30.15	0.00	
6		2002411936		34.85	28.50	35.85	2.85	
7		2002411937		40.55	34.20	41.55	0.00	
8		2002411938		46.25	39.90	47.25	2.85	

THIS DRAWING CONTAINS INFORMATION THAT IS PROPRIETARY TO MOLEX ELECTRONIC TECHNOLOGIES, LLC AND SHOULD NOT BE USED WITHOUT WRITTEN PERMISSION									
DIMENSION UNITS	SCALE	CURRENT REV DESC:			 MEGA-FIT S/R HEADER ASSEMBLY(R/A)				
mm	NTS								
GENERAL TOLERANCES (UNLESS SPECIFIED)		EC NO: 743219			PRODUCT CUSTOMER DRAWING				
ANGULAR TOL ± 3.0°		DRWN: WYATTH5 2023/03/14							
4 PLACES ±	CHK'D: XQZHANG 2023/03/22			DOCUMENT NUMBER: 2002412000 DOC TYPE: PSD DOC PART: 000 REVISION: D2					
3 PLACES ±	APPR: XQZHANG 2023/03/22								
2 PLACES ± 0.25	INITIAL REVISION:			MATERIAL NUMBER: SEE TABLE CUSTOMER: GENERAL MARKET SHEET NUMBER: 3 OF 3					
1 PLACE ± 0.35	DRWN: YXZHENG 2016/09/22								
0 PLACES ±	APPR: YXZHENG 2018/08/06								
DRAFT WHERE APPLICABLE MUST REMAIN WITHIN DIMENSIONS		THIRD ANGLE PROJECTION	DRAWING	SERIES					
			A3-SIZE	200241					