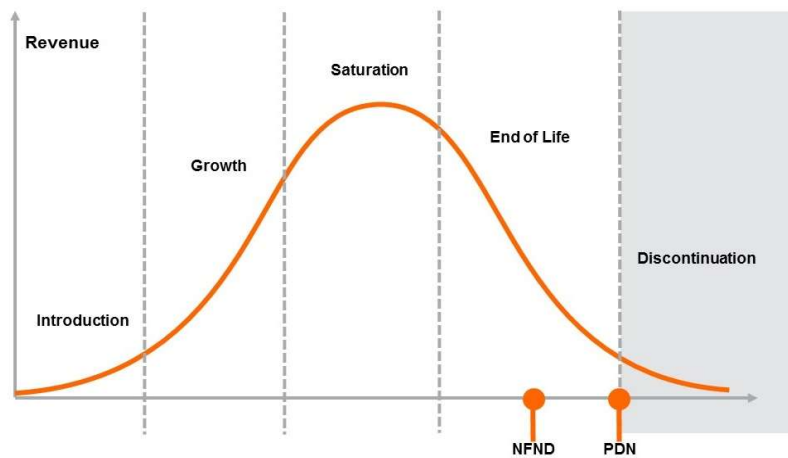


Light is OSRAM

Product Or Individual Q-Code Discontinuation (acc. JEDEC J-STD-048)
OS-PDN-2021-075

01 July 2021

Last order: 01 July 2021
Last delivery: 30 September 2021



Please direct your feedback to your local Sales office.

DISCONTINUED				NEW (REPLACEMENT)		
Device	Ordering Code	Brand	Reason for discontinuation	Device	Datasheet Ordering Code	Brand
GW T5LWF2.CM-FB9-50AS4-1-20-T02-XX	Q65113A0793	DURIS L	Product end of life	No replacement		
GW T5LWF2.CM-FB9-50BS4-1-20-T01-XX	Q65113A0794	DURIS L	Product end of life	No replacement		
GW T5LWF2.CM-FB9-50BS4-1-20-T02-XX	Q65113A0795	DURIS L	Product end of life	No replacement		
GW T5LWF2.CM-FC3-27AS4-1-20-T01-XX	Q65113A0796	DURIS L	Product end of life	No replacement		
GW T5LWF2.CM-FC3-27AS4-1-20-T02-XX	Q65113A0797	DURIS L	Product end of life	No replacement		
GW T5LWF2.CM-FC3-27BS4-1-20-T01-XX	Q65113A0798	DURIS L	Product end of life	No replacement		
GW T5LWF2.CM-FC3-27BS4-1-20-T02-XX	Q65113A0799	DURIS L	Product end of life	No replacement		
GW T5LWF2.CM-FC3-27CS4-1-20-T01-XX	Q65113A0800	DURIS L	Product end of life	No replacement		
GW T5LWF2.CM-FC3-27CS4-1-20-T02-XX	Q65113A0801	DURIS L	Product end of life	No replacement		
GW T5LWF2.CM-FC3-27DS4-1-20-T01-XX	Q65113A0802	DURIS L	Product end of life	No replacement		
GW T5LWF2.CM-FC3-27DS4-1-20-T02-XX	Q65113A0803	DURIS L	Product end of life	No replacement		