



E

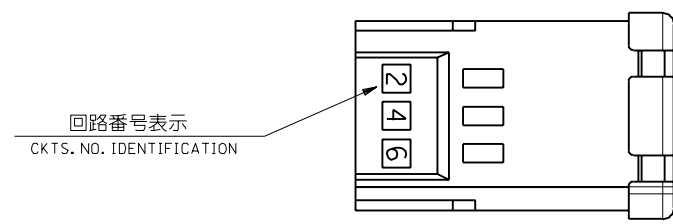
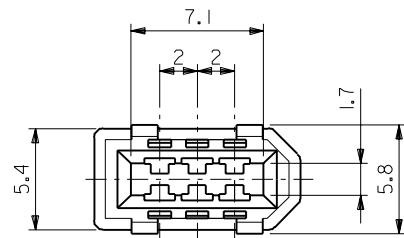
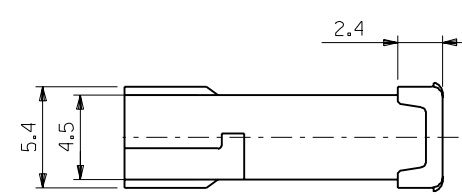
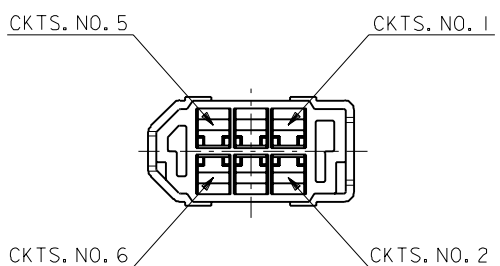
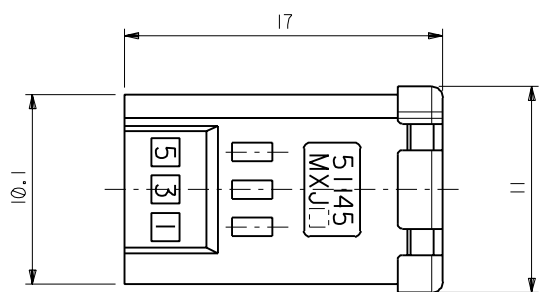
D

C

B

A

MM DIMENSIONS IN METRIC DO NOT SCALE DRAWING



注)  
NOTES

1. 材質  
MATERIAL  
ガラス入りPBT樹脂 UL94V-0 色:黒  
PBT G.F. UL94V-0 COLOR:BLACK
2. 適用ターミナル : 50639-80\*\*  
APPLICABLE TERMINAL : 50639-80\*\*
3. 適用シェルカバー : 58098-0600, 58299-0600  
APPLICABLE SHELL COVER : 58098-0600, 58299-0600
4. 適用シェルボディ : 58099-0600, 58300-0600  
APPLICABLE SHELL BODY : 58099-0600, 58300-0600

		材料 MATERIAL		注参照 SEE NOTES		MOLEX-JAPAN CO.,LTD. 日本モレックス株式会社	
		FINISH		—		REVISE ONLY ON CAD SYSTEM	
		適用配線範囲 WIRE RANGE		—		TITLE 名称	
		被覆外径 INS. RANGE		—		2.0 mm PITCH I/O CONN. CRIMP TYPE PLUG HS'G	
角 度 ANGLE		±3°		DRAWN BY		CHK'D BY	
30°以上 OVER		+0.3		Y. Ozawa		Y. Ota	
10°以上 30°未満 OVER UNDER		+0.25		DATE		DWG. NO. (SHEET 2 OF 2) REV	
10°未満 UNDER		+0.2		DR. CHK.		SD-51145-0601 D	
一般公差 GENERAL TOLERANCES		記号 LTR		変更内容 REVISION RECORD		尺 寸 SCALE 4-1	