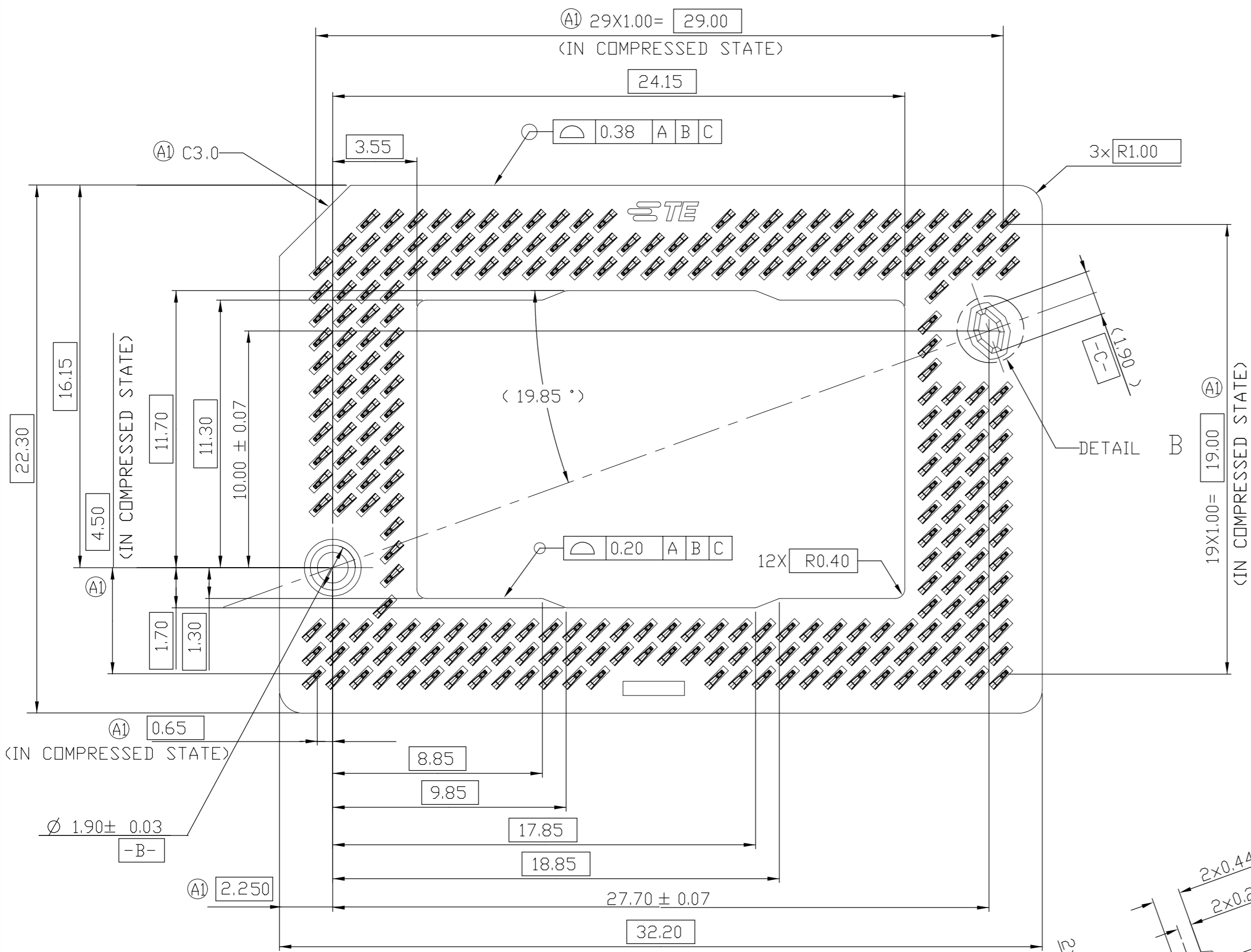
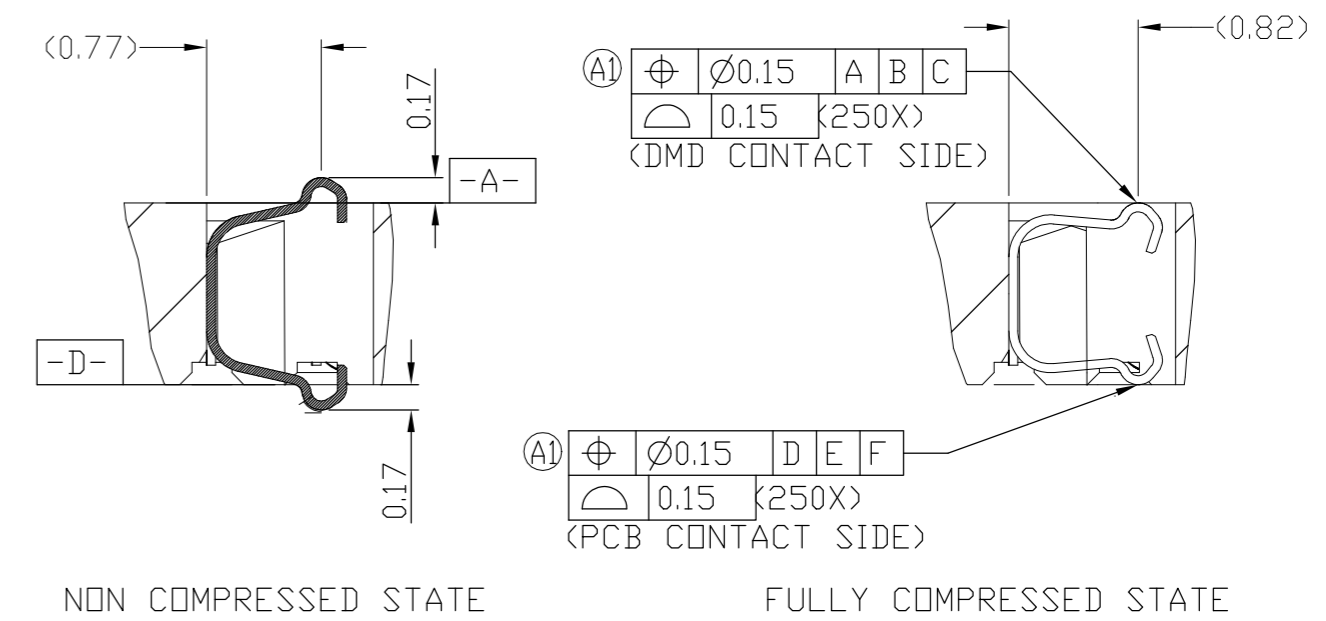


REVISIONS				
P	LTR	DESCRIPTION	DATE	APVD
A1		REVISED PER ECD-19-006292	19MAR2019	T.Z B.L

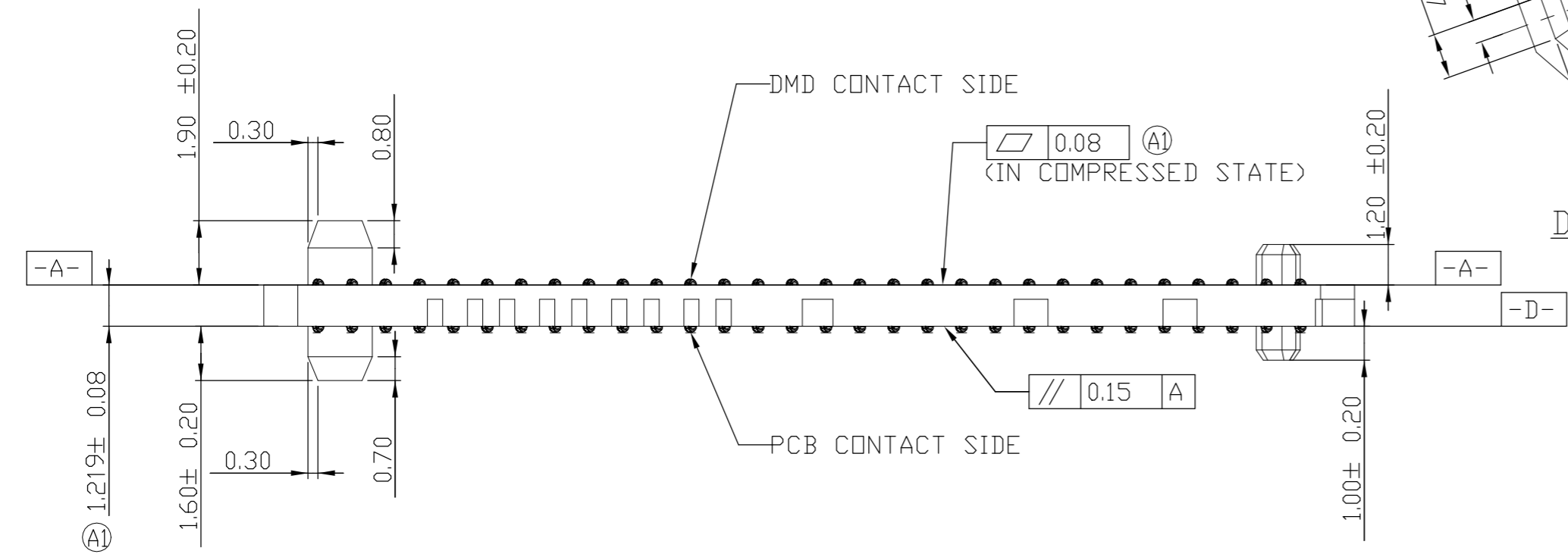


DMD LGA CONTACT SIDE

- 1. MATERIAL
 - 1 HOUSING : HIGH TEMP, THERMO-PLASTIC, UL94V-0, BLACK
 - 2 CONTACT : COPPER ALLOY
- 2. FINISH
 - CONTACT : 3u" Au PL. ON CONTACT AREA
 - Ni UNDER PL. 50u" MIN. OVER ALL.
- 3. THICKNESS: 1.219mm AFTER COMPRESSION.
- 4. DIMENSION SHALL BE INTERPRETED PER ASME Y14.5M-1994.
- 5. RECOMMENED CONNECTOR LOADING FORCE: 10KgF Min.

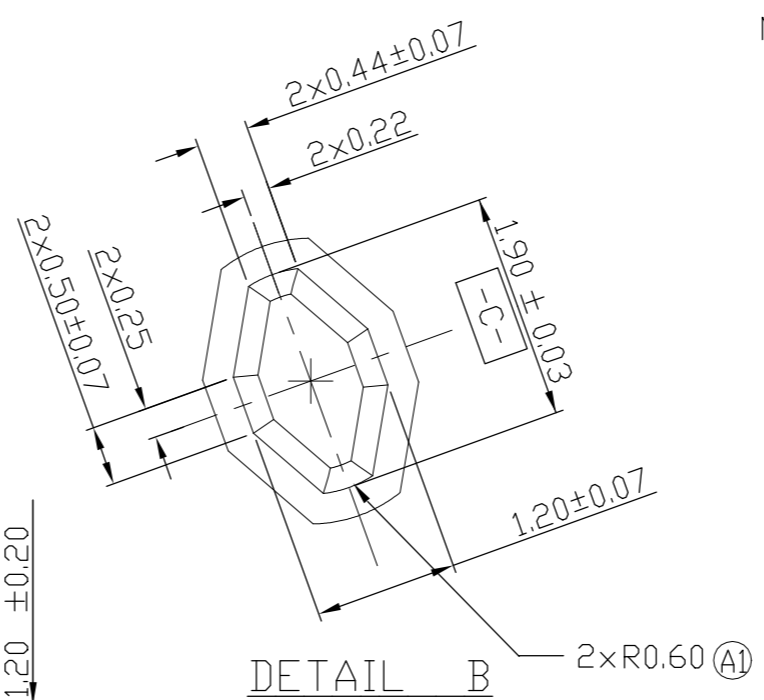


CONTACT CROSS SECTION DETAIL



DMD CONTACT SIDE

PCB CONTACT SIDE



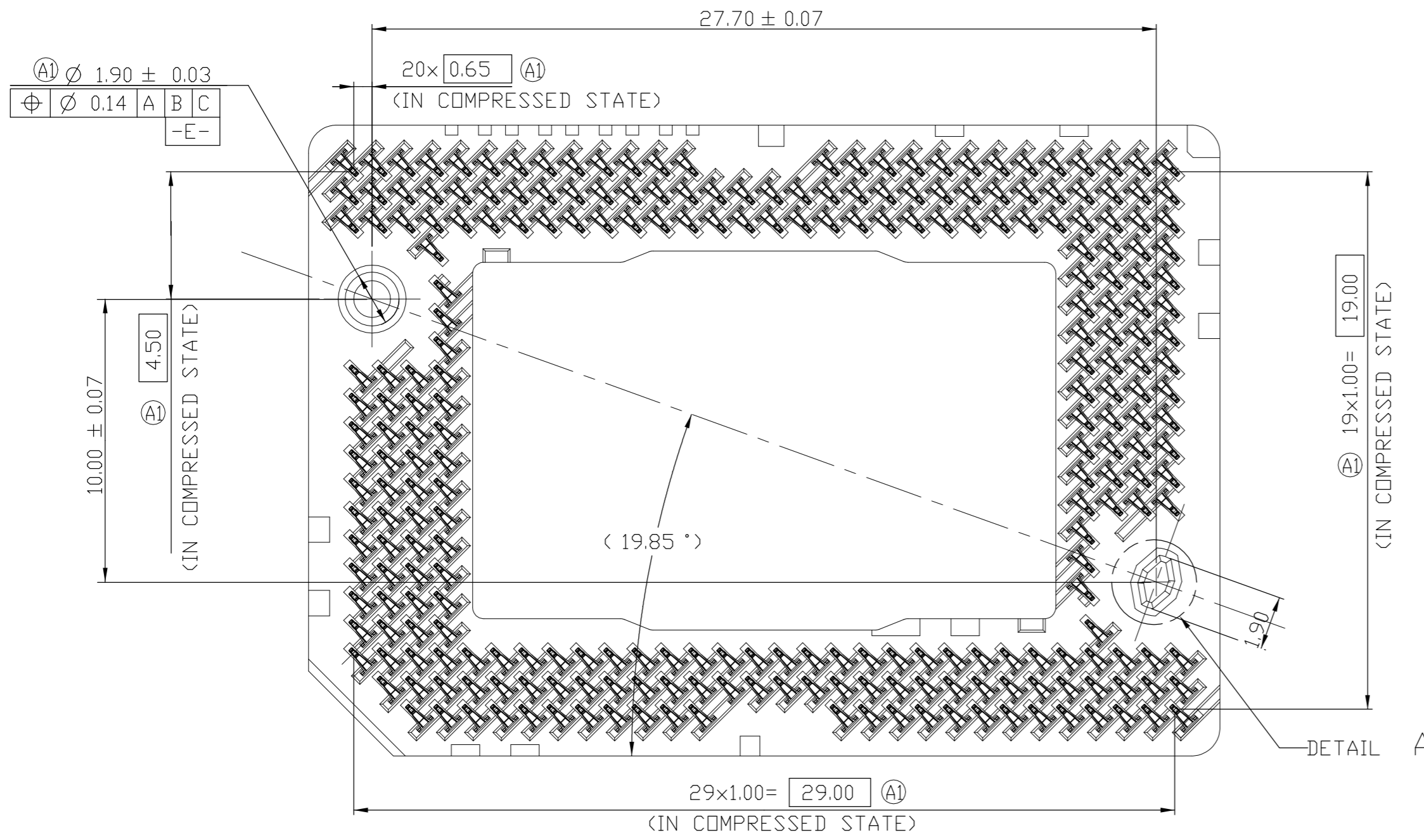
DETAIL B

2319757-1:AS SHOWN

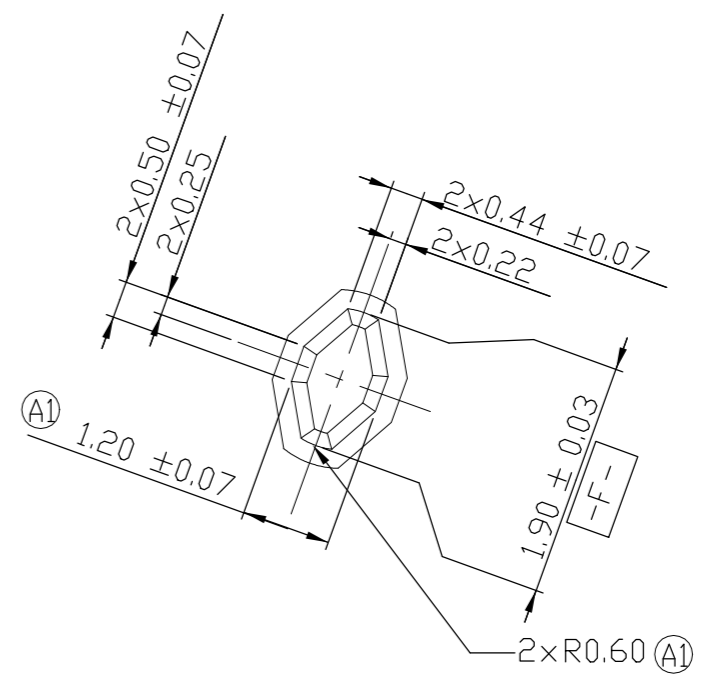
THIS DRAWING IS A CONTROLLED DOCUMENT.		DWN BILL LV 5May2017	TE Connectivity
DIMENSIONS: MM		CHK COREL WANG 5May2017	
TOLERANCES UNLESS OTHERWISE SPECIFIED:		APVD COREL WANG 5May2017	NAME CUSTOMER DRAWING DMD SOCKET 257 POS
0 PLC ± 1 PLC ±0.3 2 PLC ±0.15 3 PLC ±0.05 4 PLC ± ANGLES ±3 FINISH		APPLICATION SPEC -	SIZE A2
MATERIAL 1	FINISH 2	WEIGHT -	CAGE CODE -
CUSTOMER DRAWING		DRAWING NO C=2319757	RESTRICTED TO -
SCALE 3:1		SHEET 1 OF 3	REV A1

THIS DRAWING IS UNPUBLISHED. RELEASED FOR PUBLICATION 20
 © COPYRIGHT 20 BY - ALL RIGHTS RESERVED.

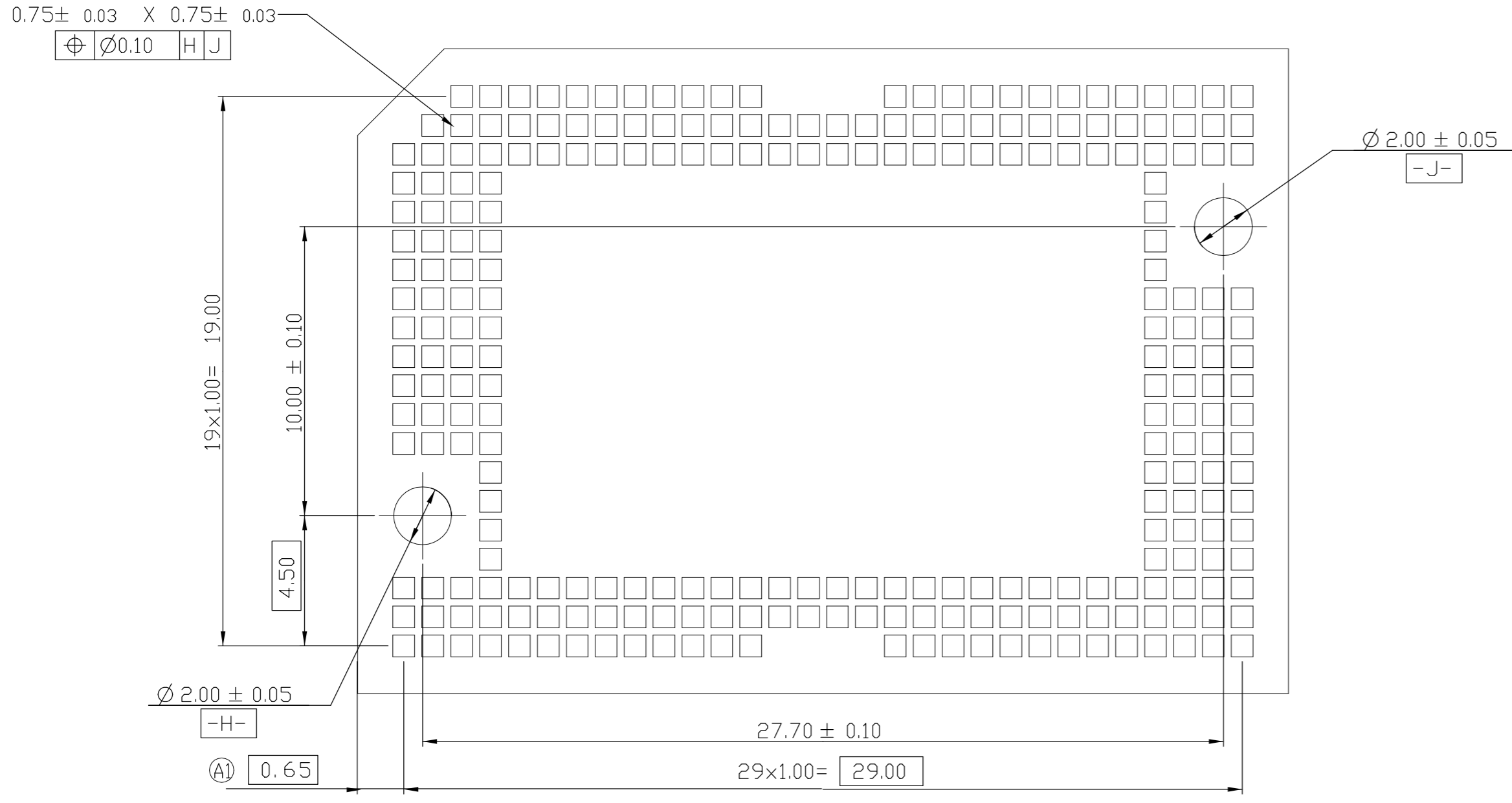
REVISIONS					
P	LTR	DESCRIPTION	DATE	DWN	APVD
-	-	SEE SHEET 1	-	-	-




PCB CONTACT SIDE



DETAIL A



RECOMMENDED PCB LAYOUT

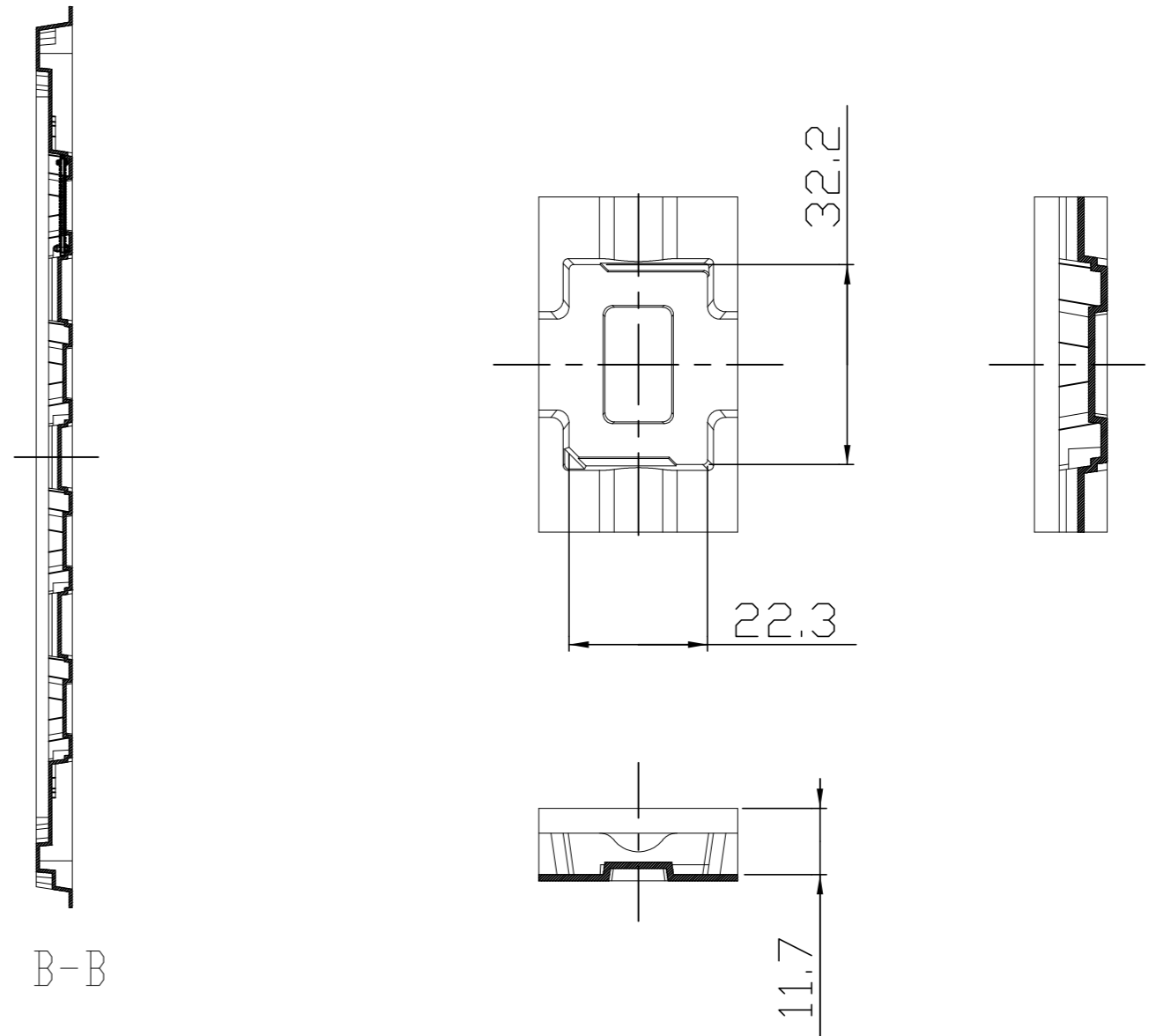
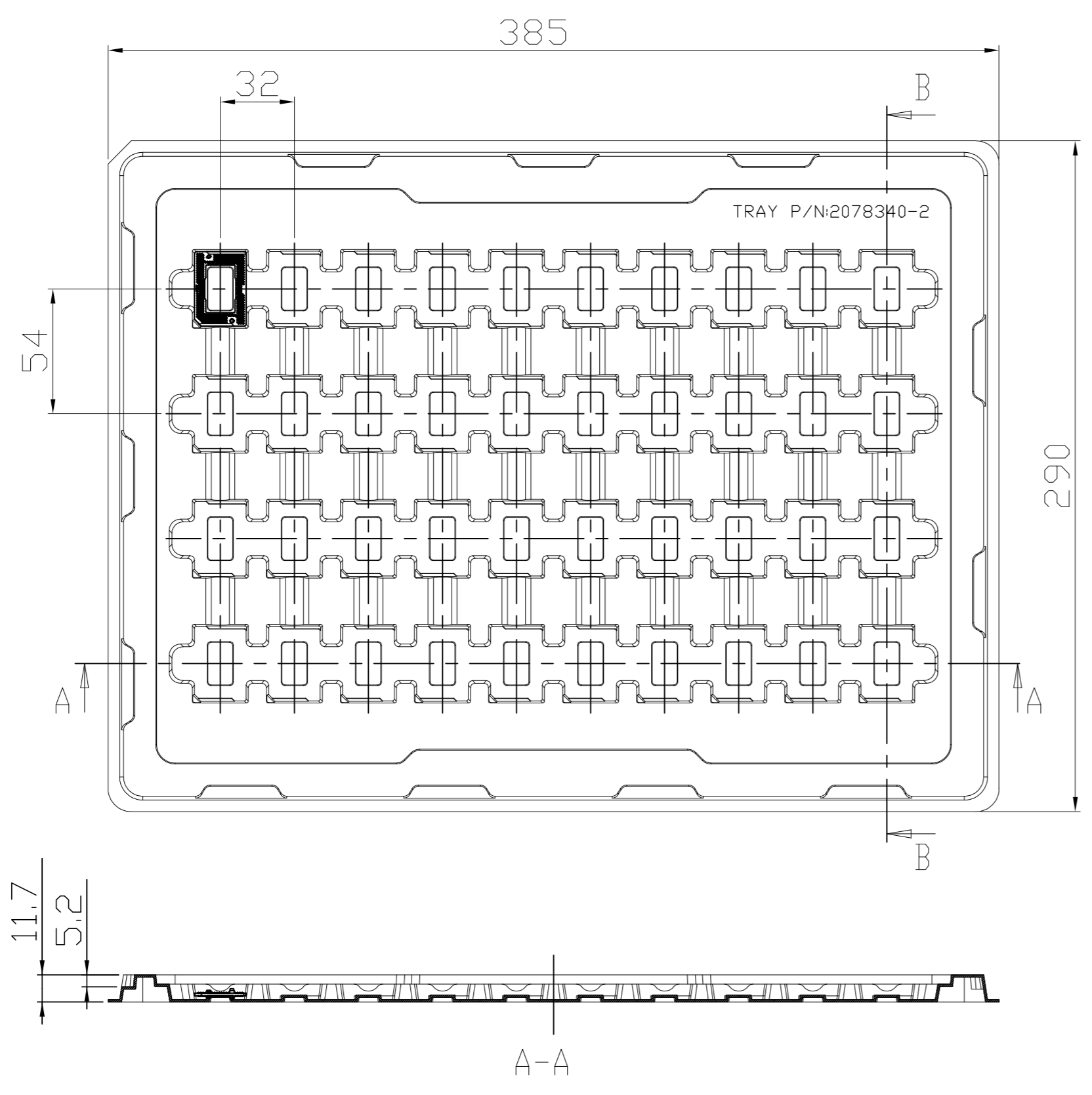
THIS DRAWING IS A CONTROLLED DOCUMENT.		DWN BILL LV 5May2017	 TE Connectivity
DIMENSIONS: MM		CHK COREL WANG 5May2017	
TOLERANCES UNLESS OTHERWISE SPECIFIED:		APVD COREL WANG 5May2017	NAME CUSTOMER DRAWING DMD SOCKET 257 POS
0 PLC ± 1 PLC ±0.3 2 PLC ±0.15 3 PLC ±0.05 4 PLC ± ANGLES ±3 FINISH		PRODUCT SPEC - APPLICATION SPEC - WEIGHT -	SIZE A2
MATERIAL		CUSTOMER DRAWING	DRAWING NO C=2319757
		SCALE 3:1	RESTRICTED TO -
		SHEET 2 OF 3	REV A1

THIS DRAWING IS UNPUBLISHED.
 RELEASED FOR PUBLICATION 20
 (C) COPYRIGHT 20 BY - ALL RIGHTS RESERVED.

		USADO EN	UTILISATION		
		REVISIONS			
P	LTR	DESCRIPTION	DATE	DWN	APVD
-		SEE SHEET 1	-	-	-

REAROUND
 D
 C
 A

QUESTA FIGURA NON RAPPRESENTA UN DOCUMENTO TECNICAMENTE VALIDO. I DATI PRESENTI SONO SOLO A TITOLO INFORMATIVO E NON DEVONO ESSERE UTILIZZATI PER PROVAZIONI O CALIBRAGGI. PER ULTERIORI INFORMAZIONI, SI INVITA IL CLIENTE A LEGGERE IL MANUALE D'USO DEL PRODOTTO. TUTTI I DIRITTI RISERVATI.
 THIS DRAWING IS UNPUBLISHED. IT DOES NOT REPRESENT A TECHNICALLY VALID DOCUMENT. THE DATA PRESENTED IS ONLY FOR INFORMATIONAL PURPOSES AND SHOULD NOT BE USED FOR TESTING OR CALIBRATION. FOR FURTHER INFORMATION, WE ADVISE THE CLIENT TO READ THE PRODUCT USER MANUAL. ALL RIGHTS RESERVED.



THIS DRAWING IS A CONTROLLED DOCUMENT.		DWN BILL LV 5May2017	STE TE Connectivity		
DIMENSIONS: MM		CHK COREL WANG 5May2017			
TOLERANCES UNLESS OTHERWISE SPECIFIED:		APVD COREL WANG 5May2017			
MATERIAL	FINISH	PRODUCT SPEC	NAME CUSTOMER DRAWING DMD SOCKET 257 POS		
		APPLICATION SPEC	SIZE A2	CAGE CODE -	DRAWING NO C=2319757
CUSTOMER DRAWING		WEIGHT -	SCALE 3:1	SHEET 3 OF 3	REV A1